

Patchwork Placemats

by White Owl Textiles



20" x 14"
Set of 4 placemats

Featuring:

*Patchwork
Picnic*

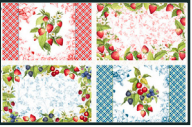
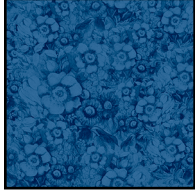


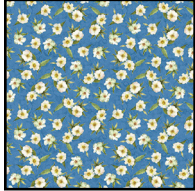
by Susan Winget

Copyright ©2025 Lumin Fabrics, All Rights Reserved



White Owl
TEXTILES

Fabric Guide

 Fabric A (Panel) W105-010-035 $\frac{2}{3}$ yard	 Fabric B W105-015-557 $\frac{3}{8}$ yard	 Fabric C W105-017-000 $\frac{3}{8}$ yard
 Binding W105-012-003 $\frac{5}{8}$ yard	 Suggested Backing W105-016-550 1 yard	

Kindly note, our free patterns are not to be sold nor hosted on any other websites. We appreciate your understanding.

All seam allowances are $\frac{1}{4}$ " unless otherwise stated.

Press seams open unless otherwise stated.

WOF = Width of Fabric (selvage to selvage)

Cutting Instructions

Fabric A

Fussy cut four $10\frac{1}{2}$ " x $16\frac{1}{2}$ " rectangles for placemat centers

Fabric B

Cut 8 strips $1\frac{1}{2}$ " x WOF

Fabric C

Cut 8 strips $1\frac{1}{2}$ " x WOF

Binding

Cut 8 strips $2\frac{1}{2}$ " x WOF

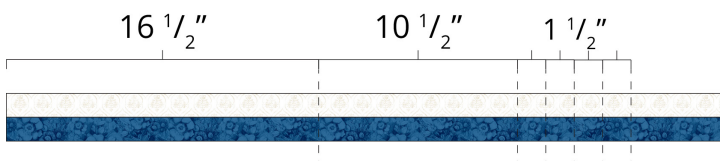
Piecing Instructions

Step 1: Sew one Fabric B strip and one Fabric C strip together along the long edge to create one BC Strip set. Press. Repeat for all Fabric B and Fabric C strips for a total of 8 BC strip sets.

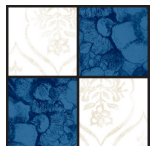


Step 2: Cut each BC strip set into the following pieces:

- one $2\frac{1}{2}$ " x $16\frac{1}{2}$ " top/bottom border
- one $2\frac{1}{2}$ " x $10\frac{1}{2}$ " side strips
- four $2\frac{1}{2}$ " x $1\frac{1}{2}$ " strips for four-patches



Step 3: Gather two $2\frac{1}{2}$ " x $1\frac{1}{2}$ " strips sew them together as shown to create a four-patch unit. Press. Repeat with remaining $2\frac{1}{2}$ " x $1\frac{1}{2}$ " strips to create a total of 16 four-patch units.



Step 4: Gather one $2\frac{1}{2}$ " x $10\frac{1}{2}$ " side strip and two four-patches from Step 3. Create the side borders by sewing the four-patches to the ends of the side strip as shown, noting the placement of the colors. Press. Repeat with remaining side strips and four-patch units to create 8 side borders.



Assembly Instructions

Step 5: Gather two $2\frac{1}{2}" \times 16\frac{1}{2}"$ top/bottom borders and one $10\frac{1}{2}" \times 16\frac{1}{2}"$ placemat center rectangle. Sew one top/bottom border to the top of the placemat, noting orientation of the borders. Press. Again noting the orientation, sew the remaining border to the bottom of the placemat. Press. Repeat with all placemat centers and all top/bottom borders, using the image to the right as a guide for strip orientation.



Step 6: Gather two side borders from Step 4. Sew them to the sides of the placemat from Step 5 as shown, noting the orientation of the strips. Press. Repeat with remaining placemats, using the image to the right as a guide.



Woohoo! Your placemat tops are now finished. Now, quilt and bind it using your preferred method. (We love double fold binding!)

