

Wild Garden Wall Hanging

by Heather Seth for White Owl Textiles



Featuring:

Wild
Garden
by Nicole Tamarin

39" x 67"

 **LUMIN**
FABRICS

 *White Owl*
TEXTILES

Copyright ©2025 Lumin Fabrics, All Rights Reserved

Fabric Guide

| | | |
|---|---|---|
|  <p>Fabric A (Panel) W100-001-914 1 yard</p> |  <p>Fabric B W100-002-719 1-$\frac{1}{8}$ yards</p> |  <p>Fabric C W100-010-777 $\frac{5}{8}$ yard</p> |
|  <p>Binding W100-008-999 $\frac{1}{2}$ yard</p> |  <p>Suggested Backing W100-005-716 2-$\frac{5}{8}$ yards</p> | |

Kindly note, our free patterns are not to be sold nor hosted on any other websites. We appreciate your understanding.

All seam allowances are $\frac{1}{4}$ " unless otherwise stated.

WOF = Width of Fabric (selvage to selvage)

LOF = Length of Fabric

Cutting Instructions

Fabric A

Fussy cut panel to 35 $\frac{1}{2}$ " x 42"

Fabric B

Fussy cut two stripe sections 9 $\frac{1}{4}$ " x LOF - one with the butterflies on top (leaving a $\frac{1}{4}$ " of the leopard print above the butterflies) and one with the butterflies on bottom (leaving a $\frac{1}{4}$ " of the leopard print below the butterflies) as shown below. Trim each strip to 9 $\frac{1}{4}$ " x 35 $\frac{1}{2}$ ".



Fabric C

Cut 7 strips 2 $\frac{1}{2}$ " x WOF

- Trim two strips down to 2 $\frac{1}{2}$ " x 35 $\frac{1}{2}$ " for top and bottom panel borders
- Trim two strips down to 2 $\frac{1}{2}$ " x 39 $\frac{1}{2}$ " for top and bottom outer borders
- Sew the remaining 3 strips together end-to-end to create one long strip.
 - Subcut two strips 2 $\frac{1}{2}$ " x 63 $\frac{1}{2}$ " for side outer borders

Binding

Cut 6 strips 2 $\frac{1}{2}$ " x WOF

Assembly Instructions

Step 1: Sew Fabric C top and bottom panel borders to the top and bottom of the panel. Press towards Fabric C.

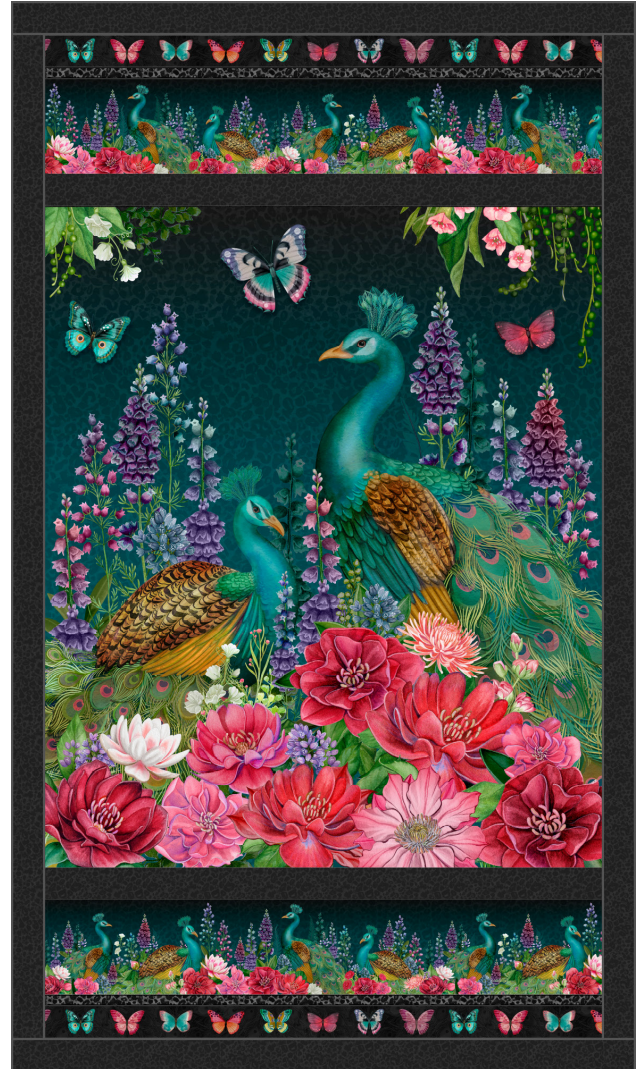


Step 2: Sew Fabric B strips to the top and bottom of panel from step 2 noting the placement of the butterflies. Press towards Fabric C.



Step 3: Sew the Fabric C side outer borders to the sides of the quilt top from Step 2. Press towards Fabric C outer borders.

Step 4: Sew the Fabric C top and bottom outer borders to the top and bottom of the quilt top from Step 3. Press towards Fabric C outer borders.



Woohoo! Your quilt top is now finished. Now, quilt and bind it using your preferred method. (We love double fold binding!)