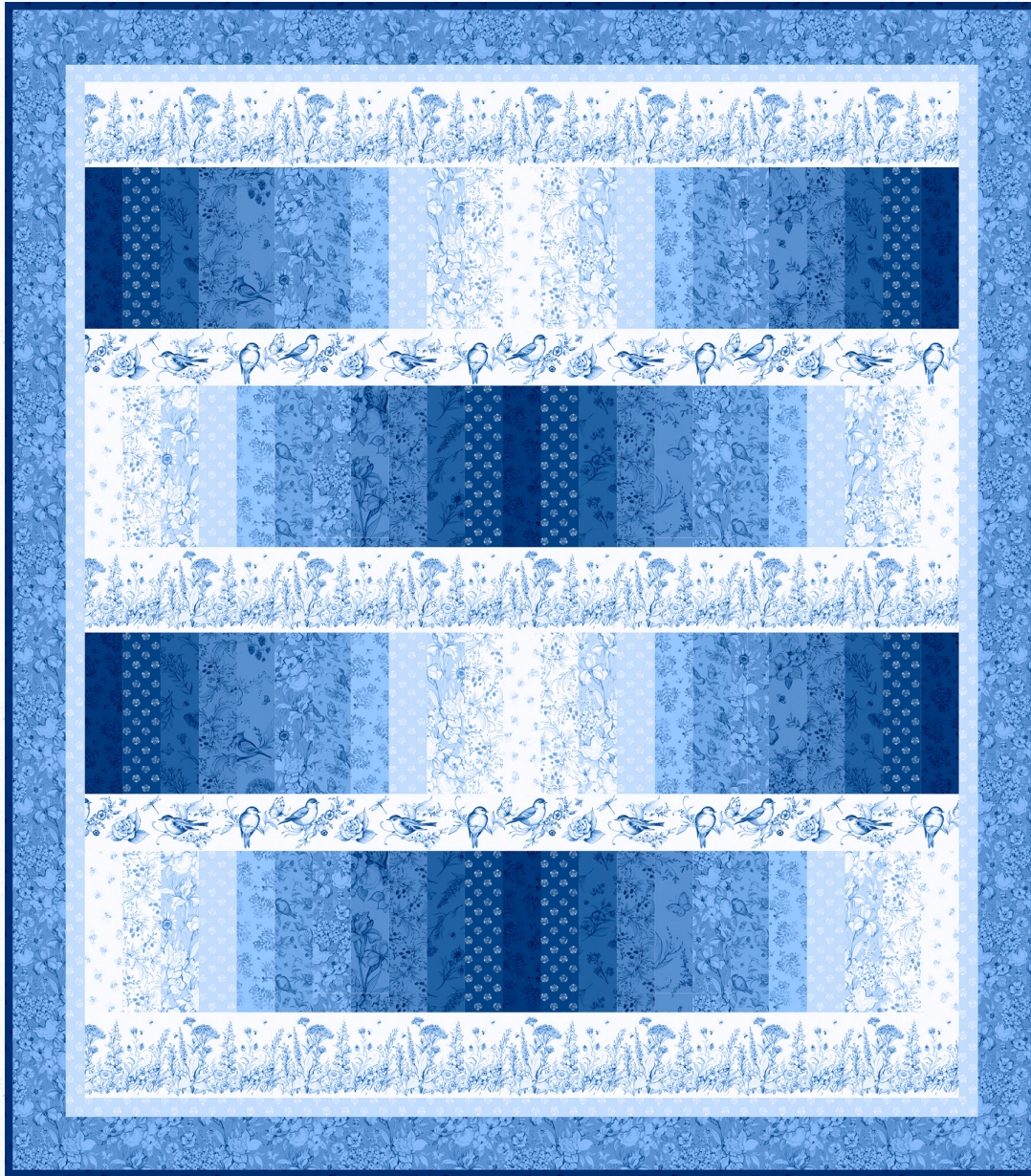


Serene Sea

by Elise Lea for White Owl Textiles



54" x 61 1/2"

Featuring:

Amalfi Coast
by Susan Winget

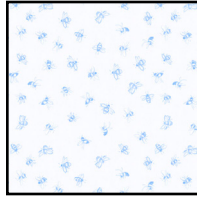


Copyright ©2025 Lumin Fabrics, All Rights Reserved

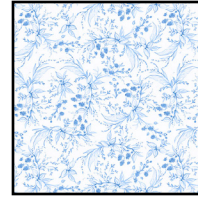
Fabric Guide



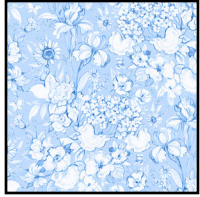
Fabric A
W105-001-055
1 $\frac{1}{3}$ yards



Fabric B
W105-007-055
 $\frac{1}{4}$ yard



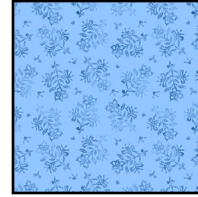
Fabric C
W105-006-055
 $\frac{1}{4}$ yard



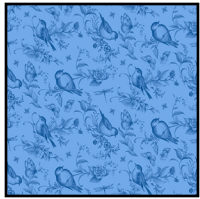
Fabric D
W105-003-505
 $\frac{1}{4}$ yard



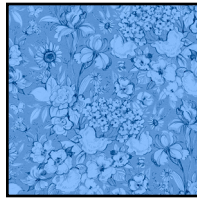
Fabric E
W105-009-505
 $\frac{3}{8}$ yard



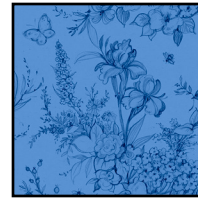
Fabric F
W105-008-555
 $\frac{1}{4}$ yard



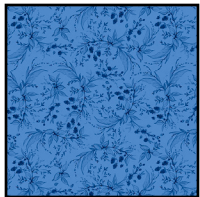
Fabric G
W105-004-555
 $\frac{1}{4}$ yard



Fabric H
W105-003-555
 $\frac{3}{4}$ yard



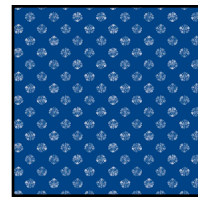
Fabric I
W105-002-555
 $\frac{1}{4}$ yard



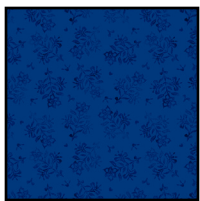
Fabric J
W105-006-555
 $\frac{1}{4}$ yard



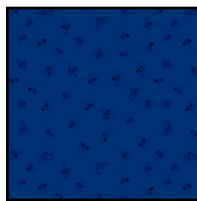
Fabric K
W105-005-555
 $\frac{1}{4}$ yard



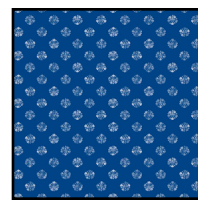
Fabric L
W105-009-570
 $\frac{1}{4}$ yard



Fabric M
W105-008-557
 $\frac{1}{4}$ yard



Binding
W105-007-557
 $\frac{1}{2}$ yard



Suggested Backing
W105-009-570
3 $\frac{1}{2}$ yards

Kindly note, our free patterns are not to be sold nor hosted on any other websites. We appreciate your understanding.

All seam allowances are $\frac{1}{4}$ " unless otherwise stated.
Press seams open unless otherwise stated.
WOF = Width of Fabric (selvage to selvage)

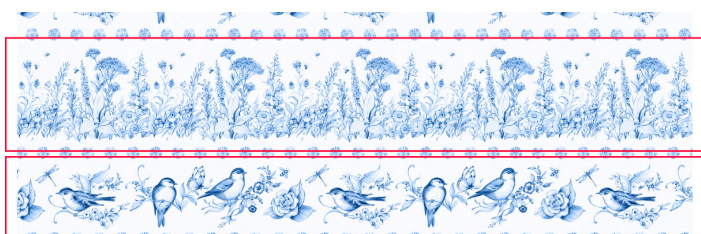
LOF = Length of Fabric
RST = Right Sides Together

Cutting Instructions

Fabric A

Fussy cut three 5" x LOF strips centering the flower motif, and two 3 $\frac{1}{2}$ " x LOF strips, centering the bird motif as shown below (your strips will be longer).

- Trim each strip to 46 $\frac{1}{2}$ " long.



Fabrics B & M

From each fabric cut 2 strips 2 $\frac{1}{2}$ " x WOF

- Sub-cut 6 strips 2 $\frac{1}{2}$ " x 8 $\frac{1}{2}$ "

Fabrics C, D, F, G, I, J, K & L

From each fabric cut 2 strips 2 $\frac{1}{2}$ " x WOF

- Sub-cut 8 strips 2 $\frac{1}{2}$ " x 8 $\frac{1}{2}$ "

Cutting Instructions Continued

Fabric E

Cut 2 strips 2 1/2" x WOF

- Sub-cut 8 strips 2 1/2" x 8 1/2"

Cut 5 strips 1 1/2" x WOF

- Sew strips together end-to-end to create one long strip. Subcut two 1 1/2" x 54" side inner borders and two 1 1/2" x 48 1/2" top and bottom inner borders

Fabric H

Cut 2 strips 2 1/2" x WOF

- Sub-cut 8 strips 2 1/2" x 8 1/2"

Cut 6 strips 3 1/2" x WOF

- Sew strips together end-to-end to create one long strip. Subcut two 3 1/2" x 56" side outer borders and two 3 1/2" x 44 1/2" top and bottom outer borders

Binding

Cut 6 strips 2 1/2" x WOF

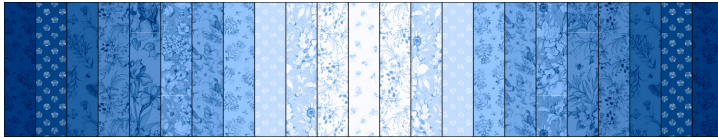
Assembly Instructions

Step 1: Gather the following pieces:

- One 2 1/2" x 8 1/2" strip of Fabric B
- Two 2 1/2" x 8 1/2" strips of Fabrics C-M

Sew them together in the following order to create one Row A:

M-L-K-J-I-H-G-F-E-D-C-B-C-D-E-F-G-H-I-J-K-L-M



Repeat to make a total of 2 Row A.

Step 2: Gather the following pieces:

- One 2 1/2" x 8 1/2" strip of Fabric M
- Two 2 1/2" x 8 1/2" strips of Fabrics B-L

Sew them together in the following order to create one Row B:

B-C-D-E-F-G-H-I-J-K-L-M-L-K-J-I-H-G-F-E-D-C-B

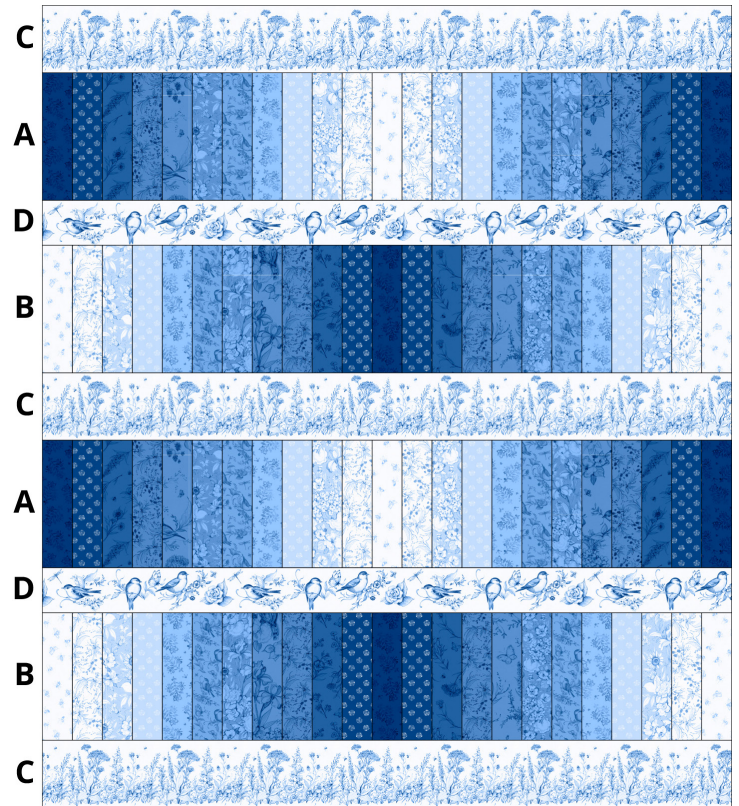
Repeat to make a total of 2 Row B.



Step 3: Gather the following pieces:

- 2 Row A
- 2 Row B
- 3 Fabric A 5" x 46 1/2" flower strips (Row C)
- 2 Fabric A 3 1/2" x 46 1/2" bird strips (Row D)

Following the diagram below sew the rows together to create the quilt top center:



Step 4: Sew the Fabric E side inner borders to the sides of the quilt top. Press towards borders. Sew the Fabric E top and bottom inner borders to the quilt top. Press towards borders.

Step 5: Sew the Fabric H side outer borders to the sides of the quilt top. Press towards borders. Sew the Fabric H top and bottom outer borders to the quilt top. Press towards borders. *(See cover image for reference if needed.)*

Woohoo! Your quilt top is now finished. Now, quilt and bind it using your preferred method.