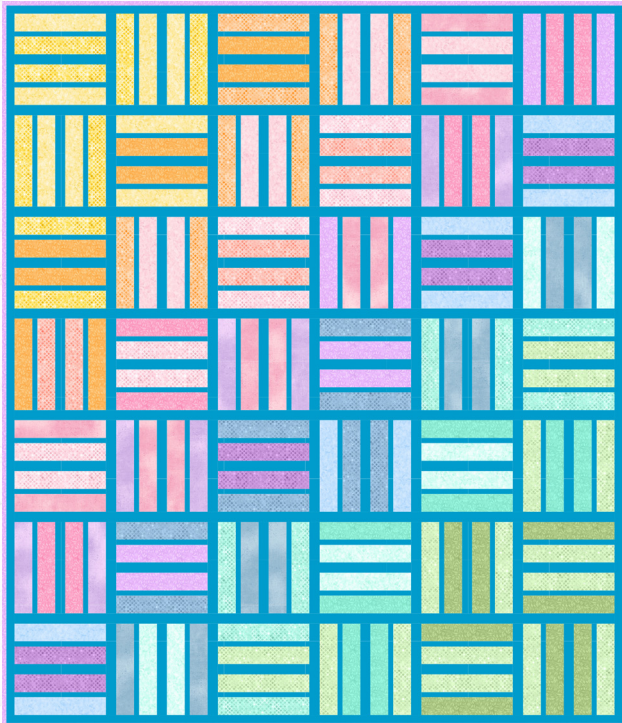
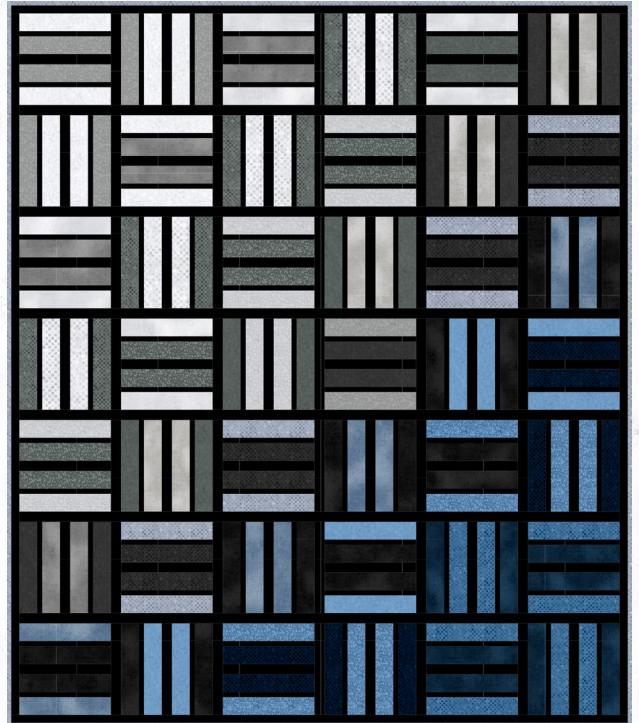


Candy Bars

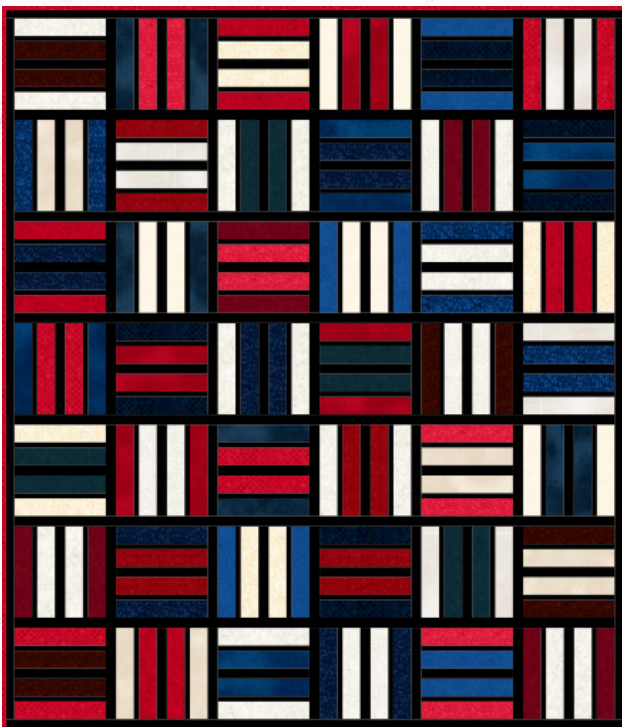
by Elise Lea for White Owl Textiles
Finished size: 61" x 71"



Sheer Bliss - Page 5



Nickel Plated - Page 6



Anchors Away - Page 7



Head to Taupe- Page 7

Fabric Guide



Blocks
1 Stack
(42 - 10" squares)



Sashing
2⅛ yards



Binding
½ yard



Backing
3⅞ yards

Kindly note, our free patterns are not to be sold nor hosted on any other websites. We appreciate your understanding.

All seam allowances are ¼" unless otherwise stated.
Press seams open unless otherwise stated.

WOF = Width of Fabric (selvage to selvage)

Cutting Instructions

Blocks	From each 10" square cut 4 strips 2¼" x 9½"
Sashing	Cut 36 strips 1½" x WOF - from 20 of the strips cut 77 strips 1½" x 9½" set remaining 16 strips aside for row sashing and borders Cut 21 strips 1" x WOF - subcut 84 pieces 1" x 9½"
Binding	Cut 7 strips 2½" x WOF

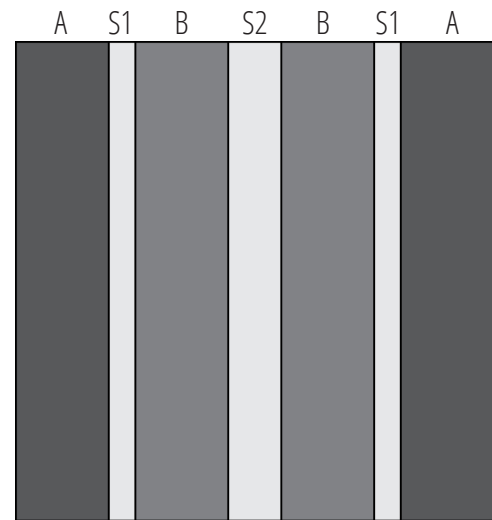
Piecing Instructions

Step 1: To make one block, gather 2 different sets of matching 2¼" x 9½" block strips, two 1" x 9½" sashing strips, and one 1½" x 9½" sashing strip. *Mix and match the 2 sets of strips for each block - either following the blocks in the quilt image of your choosing or picking your own.*

Sew them together in the following order:

- A - 2¼ x 9½" block strip
- S1 - 1" x 9½" sashing strip
- B - 2¼ x 9½" block strip
- S2 - 1½" x 9½" sashing strip
- B - 2¼ x 9½" block strip
- S1 - 1" x 9½" sashing strip
- A - 2¼ x 9½" block strip

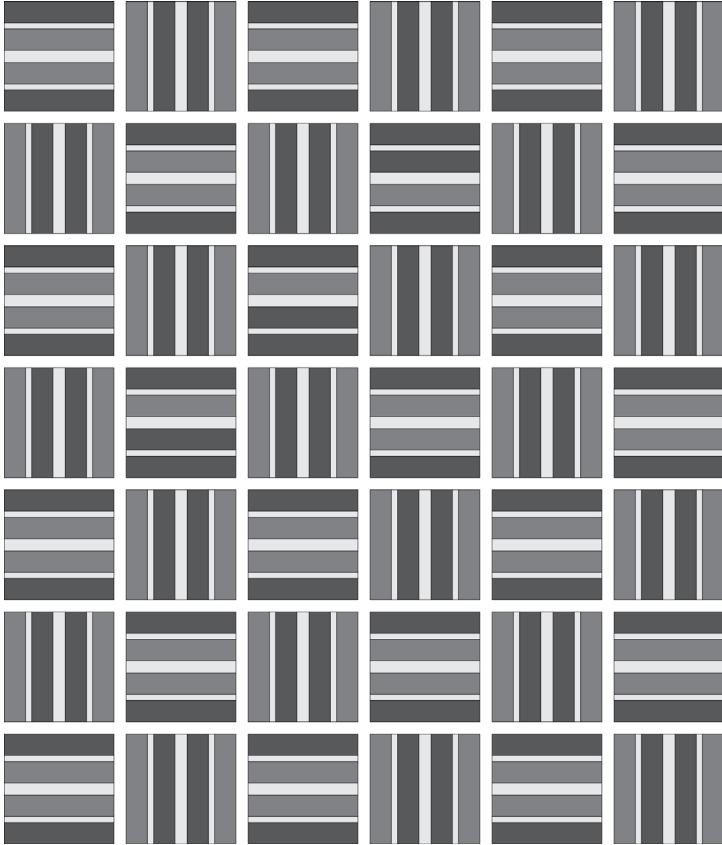
Note: the two A strips and the two B strips should match.



Press. Repeat to make a total of 42 blocks.

Assembly Instructions

Step 2: Lay the blocks out an aesthetically pleasing arrangement in a 6x7 grid, alternating the direction of the blocks as shown below. *Either follow the quilt image on the subsequent pages or choosing your own.*



Step 3: Sew three 1½" x WOF sashing strips together end-to-end to create one long strip. From the resulting strip cut two 1½" x 59½" sashing rows. Repeat with 6 more 1½" x WOF sashing strips for a total of 6 sashing rows.

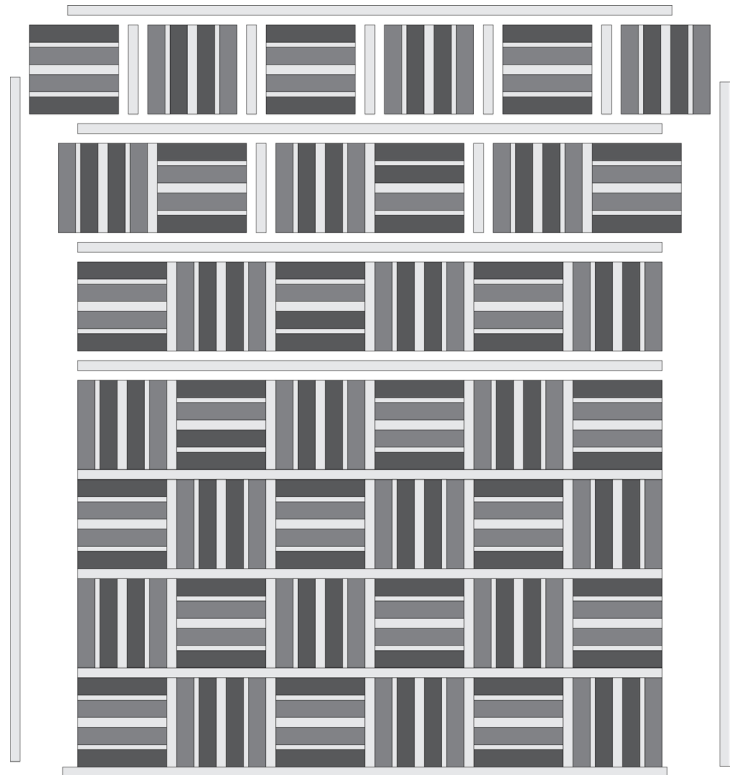
Step 4: Sew three 1½" x WOF sashing strips together end-to-end to create one long strip. From the resulting strip cut two 1½" x 61½" top and bottom outer borders.

Step 5: Sew two 1½" x WOF sashing strips together end-to-end to create one long strip. Trim the resulting strip to 1½" x 69½" for a side outer border. Repeat to make a second side outer border.

Step 6: Sew blocks into rows, placing a 1½" x 9½" sashing strip between blocks. Press.

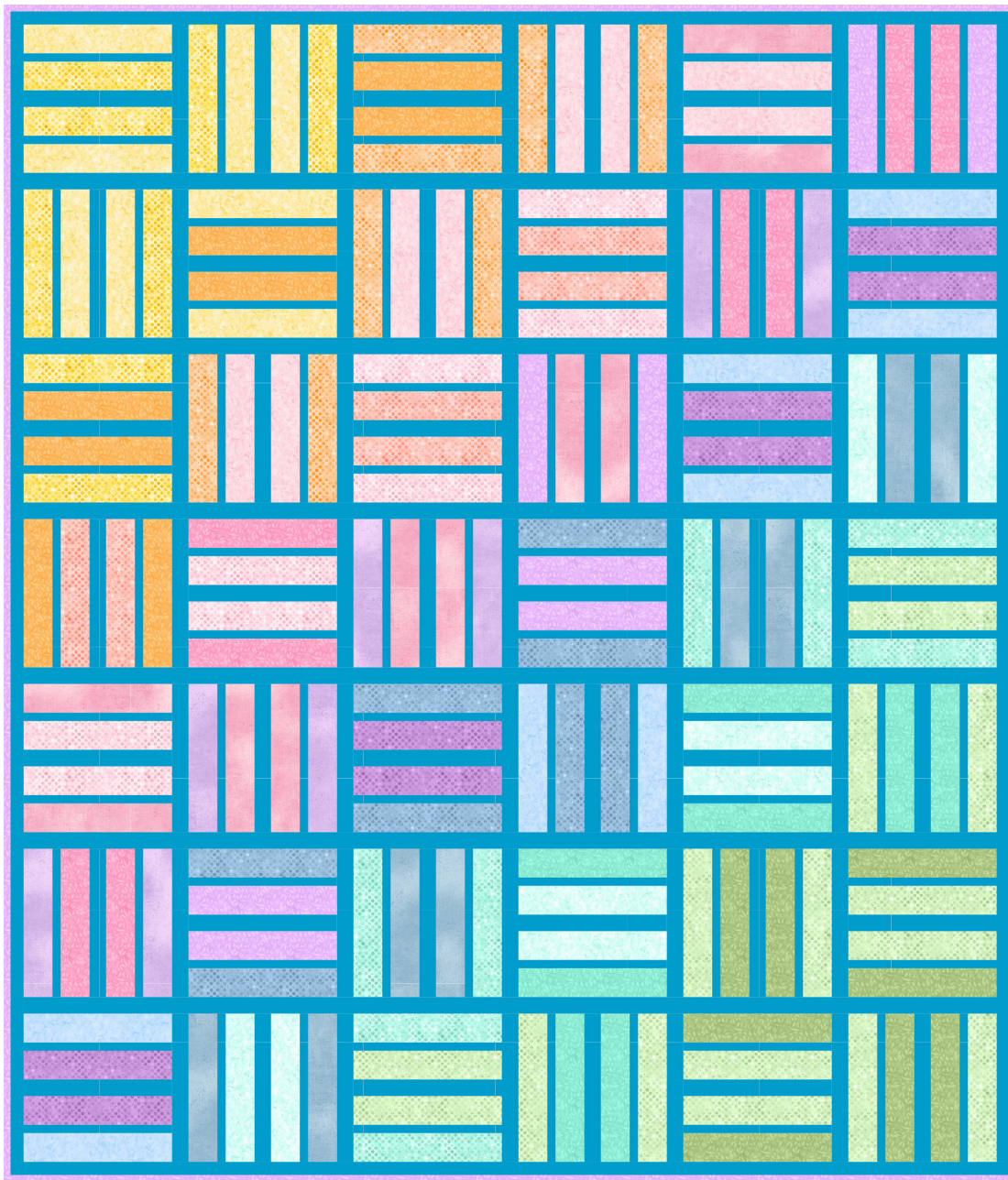
Sew block rows together placing a 1½" x 59½" sashing rows between each block row. Press

Sew the 1½" x 69½" side borders to the quilt top. Press. Sew the 1½" x 61½" top and bottom borders to the quilt top. Press



Woohoo! Your quilt top is now finished. Now, quilt and bind it using your preferred method. (We love 2½" double fold binding!)

Fundamentals: Sheer Bliss



Fabric Guide



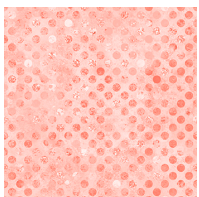
Blocks
Sheer Bliss-10
1 Stack



Sashing
EC-930
2¼ yards



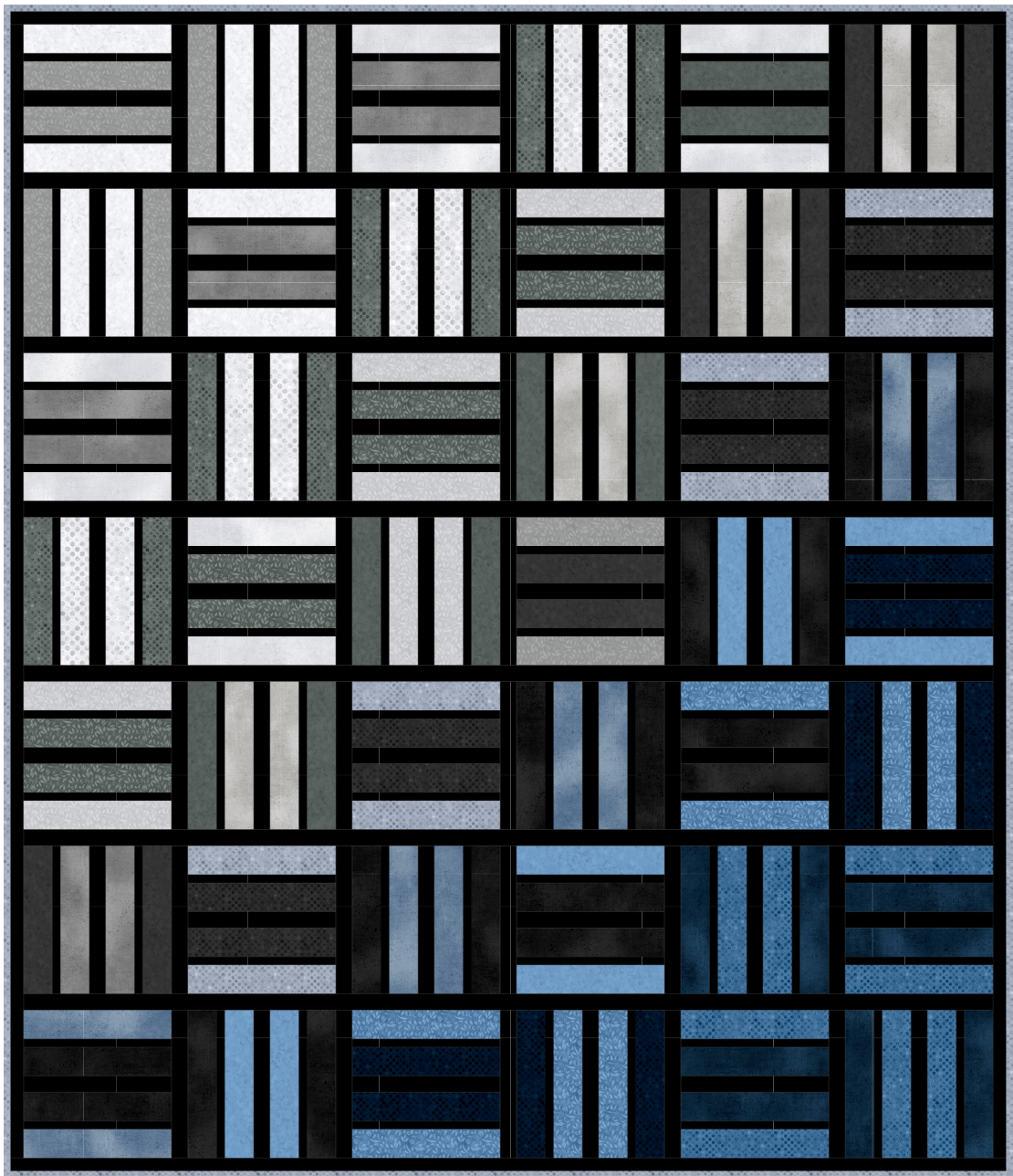
Binding
W110-002-135
½ yard



Suggested Backing
W165-001-325
3⅞ yards



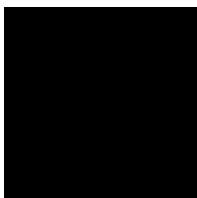
Fundamentals: Nickel Plated



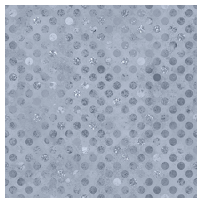
Fabric Guide



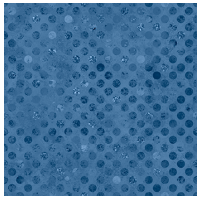
Blocks
Nickel Plated-10
1 Stack



Sashing
EC-795
2¼ yards



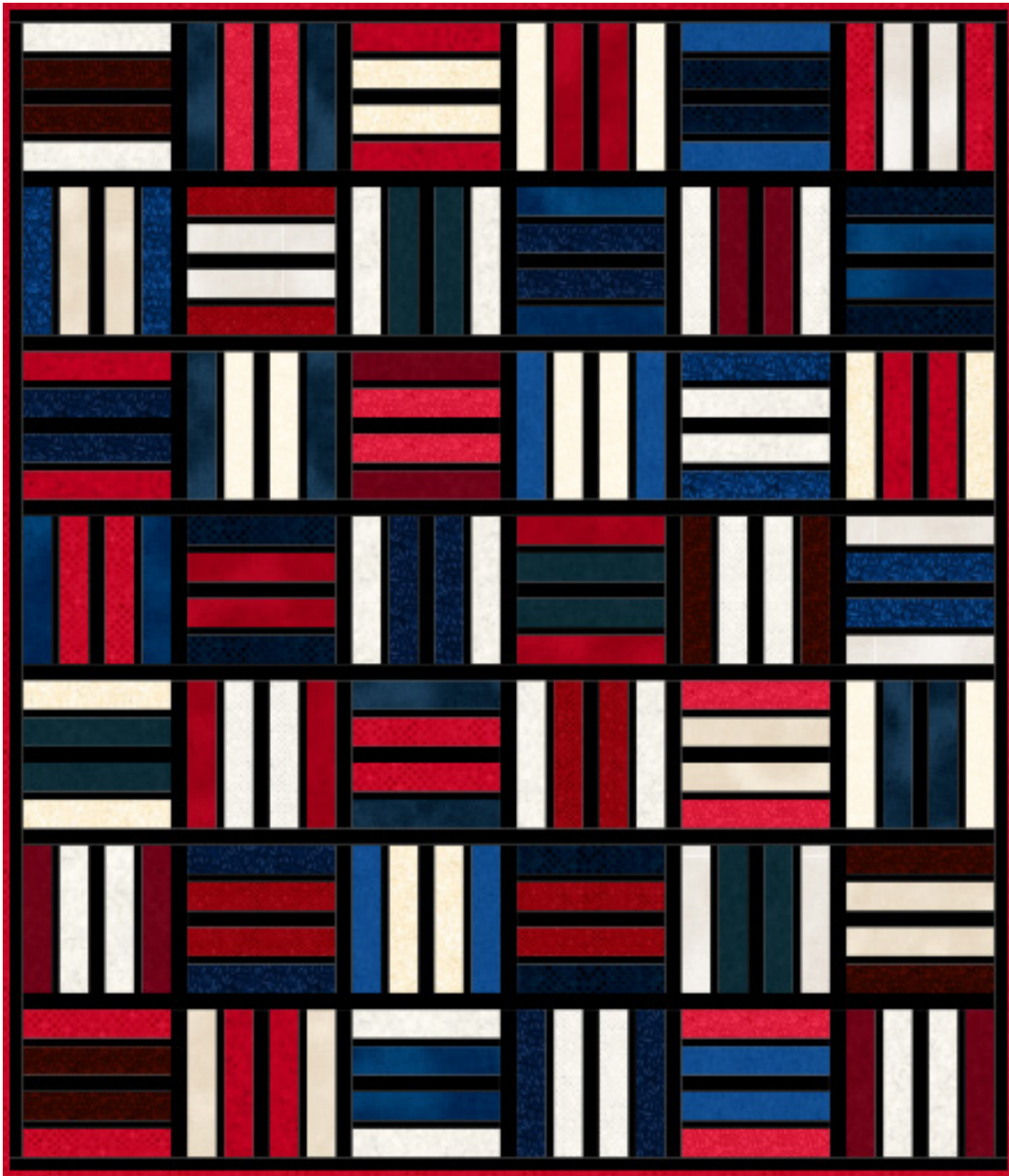
Binding
W165-001-745
½ yard



Suggested Backing
W165-001-555
3⅞ yards



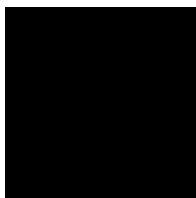
Fundamentals: Anchors Away



Fabric Guide



Blocks
Anchors Away-10
1 Stack



Sashing
EC-795
2¼ yards



Binding
W165-001-360
½ yard



**Suggested
Backing**
W130-001-575
3⅞ yards



Fundamentals: Head to Taupe



Fabric Guide



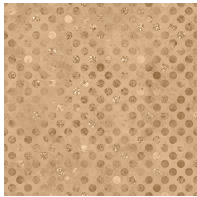
Blocks
Head to Taupe-10
1 Stack



Sashing
EC-083
2¼ yards



Binding
W130-001-057
½ yard



Suggested Backing
W165-001-063
3⅞ yards

