

Flagstone

by Elise Lea for White Owl Textiles

Fall 2025

Approximate Size: 54" x 69"

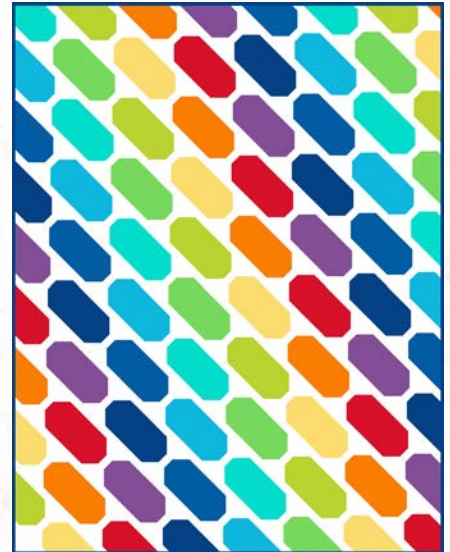
Difficulty: Confident Beginner



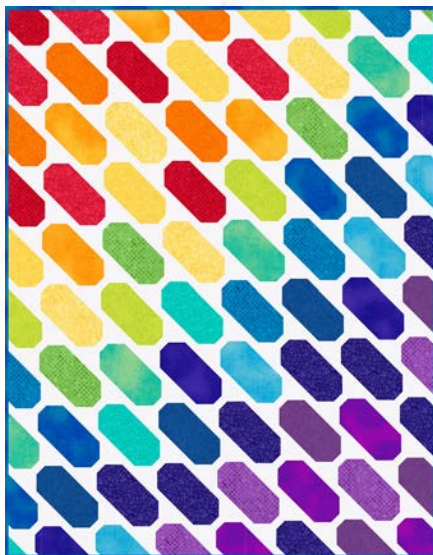
Head to Taupe - pg. 7



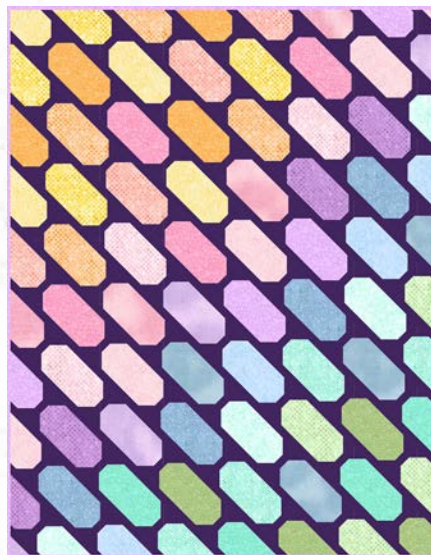
Flight of Fancy - pg. 6



Prime Time - pg. 5



Pop Culture - pg. 8



Sheer Bliss - pg. 9



Solar Flare - pg. 10

Fabric Guide



Fabric A
1 Stack or 40
10" squares



Fabric B
2 yards



Binding
 $\frac{5}{8}$ yard



Backing
 $3\frac{1}{2}$ yards

Kindly note, our free patterns are not to be sold nor hosted on any other websites. We appreciate your understanding.

All seam allowances are $\frac{1}{4}$ " unless otherwise stated.
Press seams towards Fabric B unless otherwise stated

WOF = Width of Fabric (selvage to selvage)
LOF = Length of Fabric

Cutting Instructions

Fabric A	Set two 10" squares aside from the stack Cut each of the remaining 40 squares in half to create a total of eighty 5" x 10" rectangles (<i>if the fabric is directional make sure the cut is horizontal</i>)
Fabric B	Cut 13 strips 2" x WOF <ul style="list-style-type: none"> • Subcut 252 squares 2" x 2" Cut 27 strips $1\frac{1}{2}$ " x WOF <ul style="list-style-type: none"> • From 8 of the strips subcut a total of 63 strips $1\frac{1}{2}$" x 5" • Sew the remainder of the strips together end-to-end and cut two each of the following horizontal sashing strips: <ul style="list-style-type: none"> • $1\frac{1}{2}$" x 10" • $1\frac{1}{2}$" x $20\frac{1}{2}$" • $1\frac{1}{2}$" x 31" • $1\frac{1}{2}$" x $41\frac{1}{2}$" • $1\frac{1}{2}$" x 52" • $1\frac{1}{2}$" x $62\frac{1}{2}$" • $1\frac{1}{2}$" x 73" • $1\frac{1}{2}$" x $83\frac{1}{2}$"
Binding	Cut 7 strips $2\frac{1}{2}$ " x WOF

Piecing Instructions

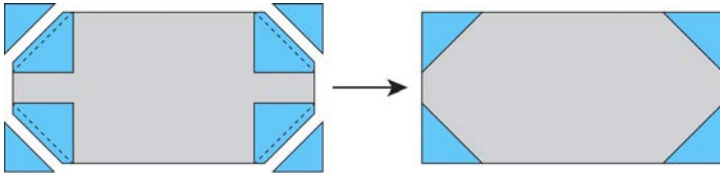
In the following steps, either copy the layout of one of the images on the colorstory pages at the end or choose your own layout.

Block A

Gather 4 Fabric B 2" x 2" squares and one Fabric A 5" x 10" rectangle. Draw a diagonal line across the back of all four squares and place them on to the corners of the rectangle as shown (noting orientation of the drawn line).



Sew on the drawn line and trim $\frac{1}{4}$ " away from the stitched line. Open and press. Repeat to make a total of 48 Block A.



Blocks B & C

Repeat the same process but this time only use 2 Fabric B 2" x 2" squares and one Fabric A 5" x 10" rectangle. Sew the number of blocks listed below.



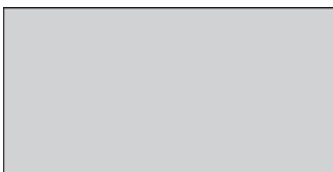
Block B
Make 15



Block C
Make 15

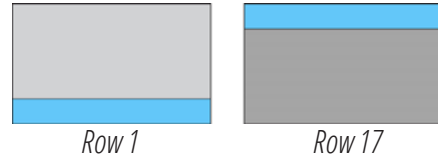
Block D

There will be a total of 2 Fabric A rectangles left with no corner pieces on them. These will be called Block D.



Rows 1 & 17

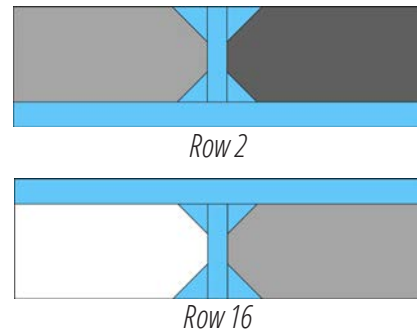
For Row 1, sew a $1\frac{1}{2}$ " x 10" Fabric B strip to the bottom of a Block D. Press. For Row 17, repeat sewing the Fabric B strip on the top of the remaining Block D. Press.



Rows 2 & 16

Sew the following blocks together, placing a $1\frac{1}{2}$ " x $5\frac{1}{2}$ " Fabric B sashing strip in between each block: Block B - Block C. Press. Make 2.

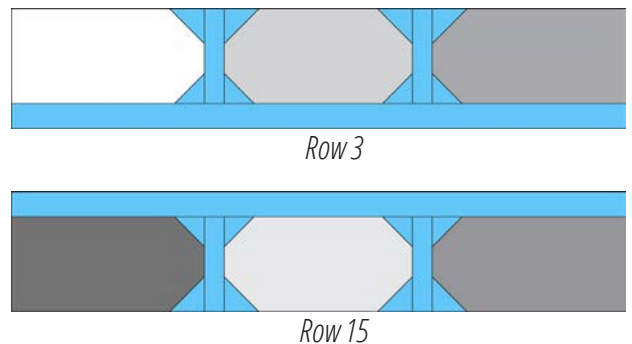
For Row 2, sew a $1\frac{1}{2}$ " x $20\frac{1}{2}$ " Fabric B strip to the bottom of one of the rows. Press. For Row 16, repeat sewing the Fabric B strip on the top of the remaining pieced row. Press.



Rows 3 & 15

Sew the following blocks together, placing a $1\frac{1}{2}$ " x $5\frac{1}{2}$ " Fabric B sashing strip in between each block: Block B - Block A - Block C. Press. Make 2 total.

For Row 3, sew a $1\frac{1}{2}$ " x 31" Fabric B strip to the bottom of one of the rows. Press. For Row 15, repeat sewing the Fabric B strip on the top of the remaining pieced row. Press.



Piecing Instructions

Rows 4 & 14

Sew the following blocks together, placing a 1½" x 5½" Fabric B sashing strip in between each block: Block B - Block A - Block A - Block C. Press. Make 2 total.

For Row 4, sew a 1½" x 41½" Fabric B strip to the bottom of one of the rows. Press. For Row 14, repeat sewing the Fabric B strip on the top of the remaining pieced row. Press.



Row 4



Row 14

Rows 5 & 13

Sew the following blocks together, placing a 1½" x 5½" Fabric B sashing strip in between each block: Block B - Block A - Block A - Block A - Block C. Press. Make 2 total.

For Row 5, sew a 1½" x 52" Fabric B strip to the bottom of one of the rows. Press. For Row 13, repeat sewing the Fabric B strip on the top of the remaining pieced row. Press.



Row 5



Row 13

Rows 6 & 12

Sew the following blocks together, placing a 1½" x 5½" Fabric B sashing strip in between each block: Block B - Block A - Block A - Block A - Block A - Block C. Press. Make 2 total.

For Row 6, sew a 1½" x 62½" Fabric B strip to the bottom of one of the rows. Press. For Row 12, repeat sewing the Fabric B strip on the top of the remaining pieced row. Press.



Row 6



Row 12

Rows 7 & 11

Sew the following blocks together, placing a 1½" x 5½" Fabric B sashing strip in between each block: Block B - Block A - Block A - Block A - Block A - Block A - Block C. Press. Make 2 total.

For Row 7, sew a 1½" x 73" Fabric B strip to the bottom of one of the rows. Press. For Row 11, repeat sewing the Fabric B strip on the top of the remaining pieced row. Press.



Row 7



Row 11

Rows 8, 9 & 10

Sew the following blocks together, placing a 1½" x 5½" Fabric B sashing strip in between each block: Block B - Block A - Block A - Block A - Block A - Block A - Block A - Block C. Press. Make 3 total.

For Row 8, sew a 1½" x 83½" Fabric B strip to the bottom of one of the rows. Press. For Row 10, repeat sewing the Fabric B strip on the top of the remaining pieced row. Press. Row 9 will not have a horizontal sashing strip sewn to it.



Row 8



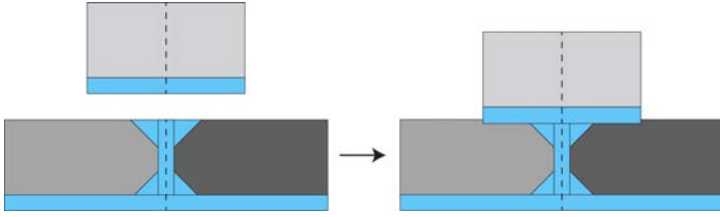
Row 9



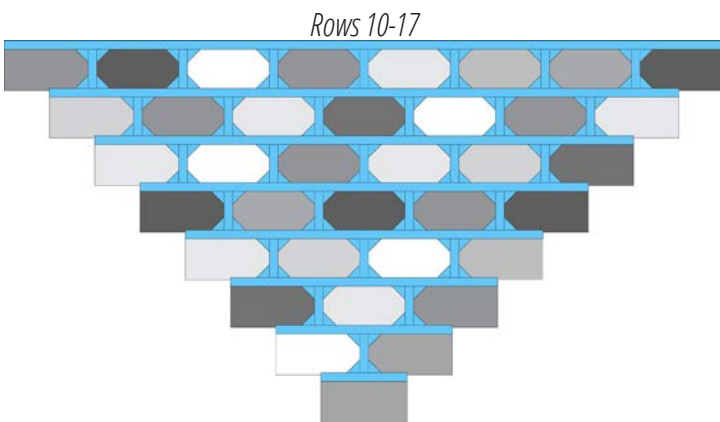
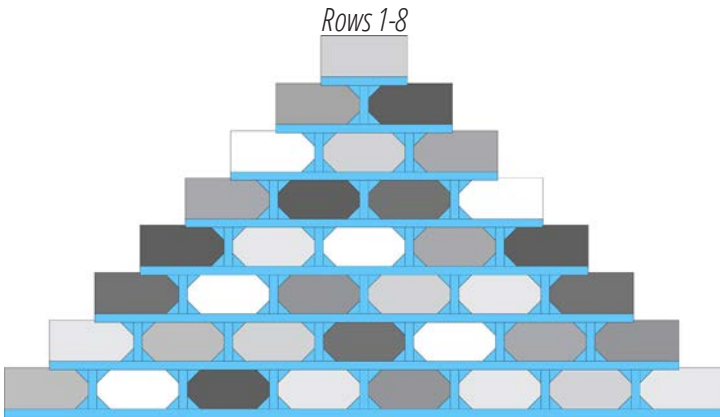
Row 10

Assembly Instructions

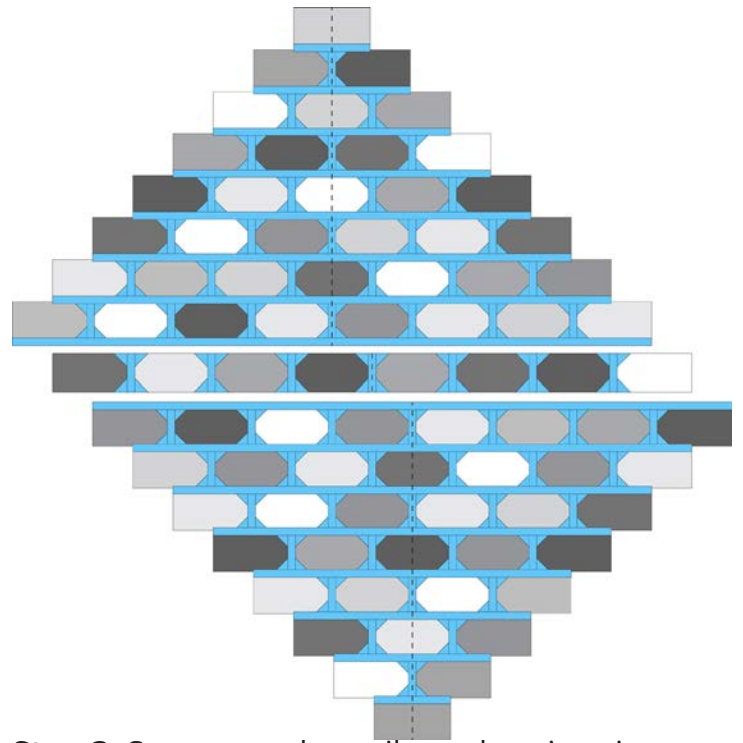
Step 1: Find the center of each row by folding the row in half the long and making a crease in the middle (see dashed line in the image below). Open the row back up and line up the creases.



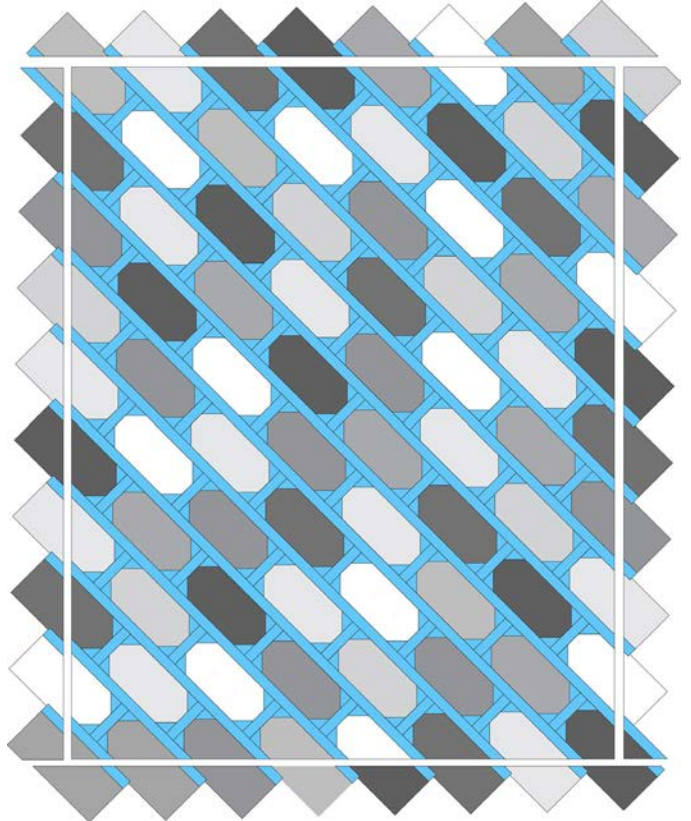
Sew Rows 1-8 together in numerical order, and rows 10-17, this will create two sections that look like below.



Step 2: Sew the two halves of the quilt together with Row 9 in between. Notice that the center of each half (see dashed lines) is aligned with the center of the block on either side of the center of Row 9.

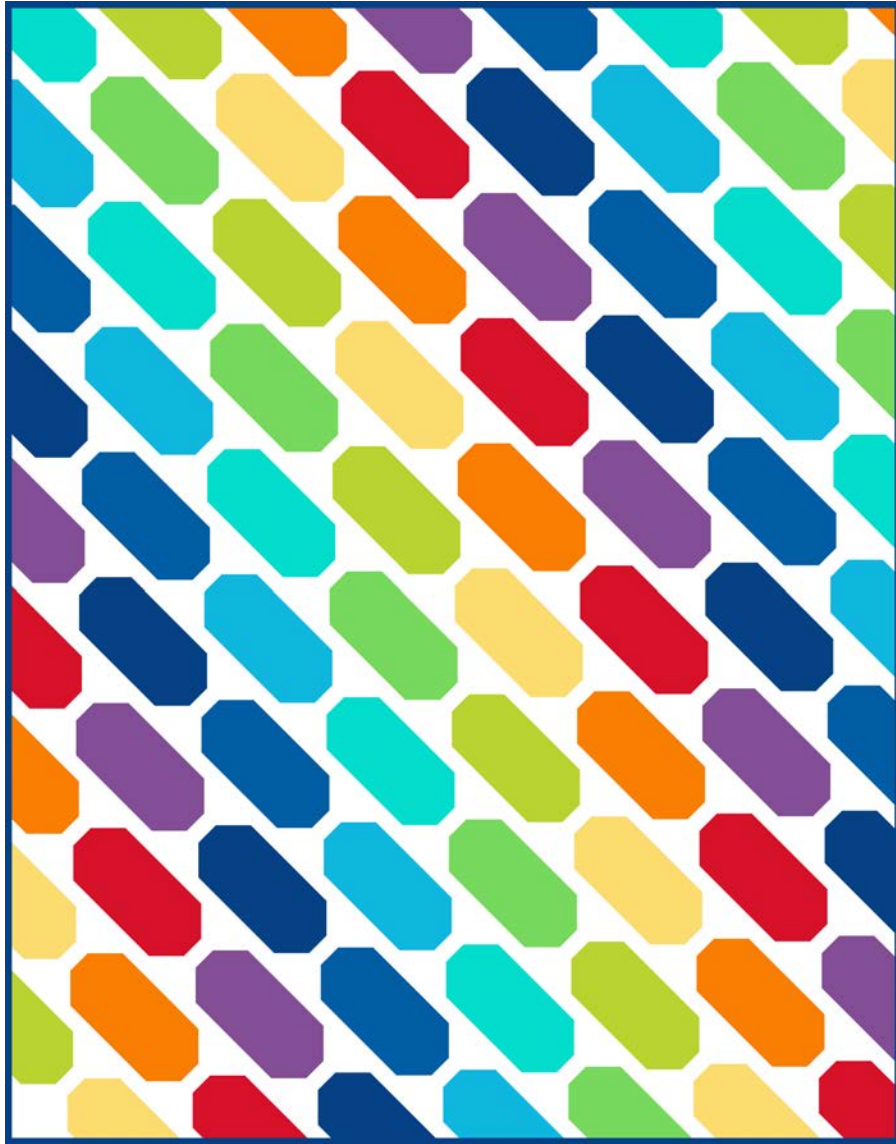


Step 3: Square up the quilt top by trimming off the ends of the rows on all four sides. The finished top should measure approximately 54" x 69".



Woohoo! Your quilt top is now finished. Now, quilt and bind it using your preferred method.

Ecco - Prime Time



Fabric Guide



Fabric A
1 Stack
EC-Prime Time=ST



Fabric B
EC-700
2 yards



Binding
EC-445
5/8 yard



Suggested Backing
EC-330
3½ yards

Kindly note, our free patterns are not to be sold nor hosted on any other websites. We appreciate your understanding.

All seam allowances are ¼" unless otherwise stated.
Press seams towards Fabric B unless otherwise stated

WOF = Width of Fabric (selvage to selvage)
LOF = Length of Fabric

Flight of Fancy



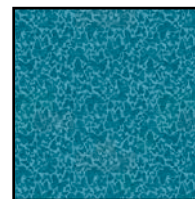
Fabric Guide



Fabric A
1 Stack
Flight of Fancy-10



Fabric B
EC-001
2 yards



Binding
W130-010-955
5/8 yard



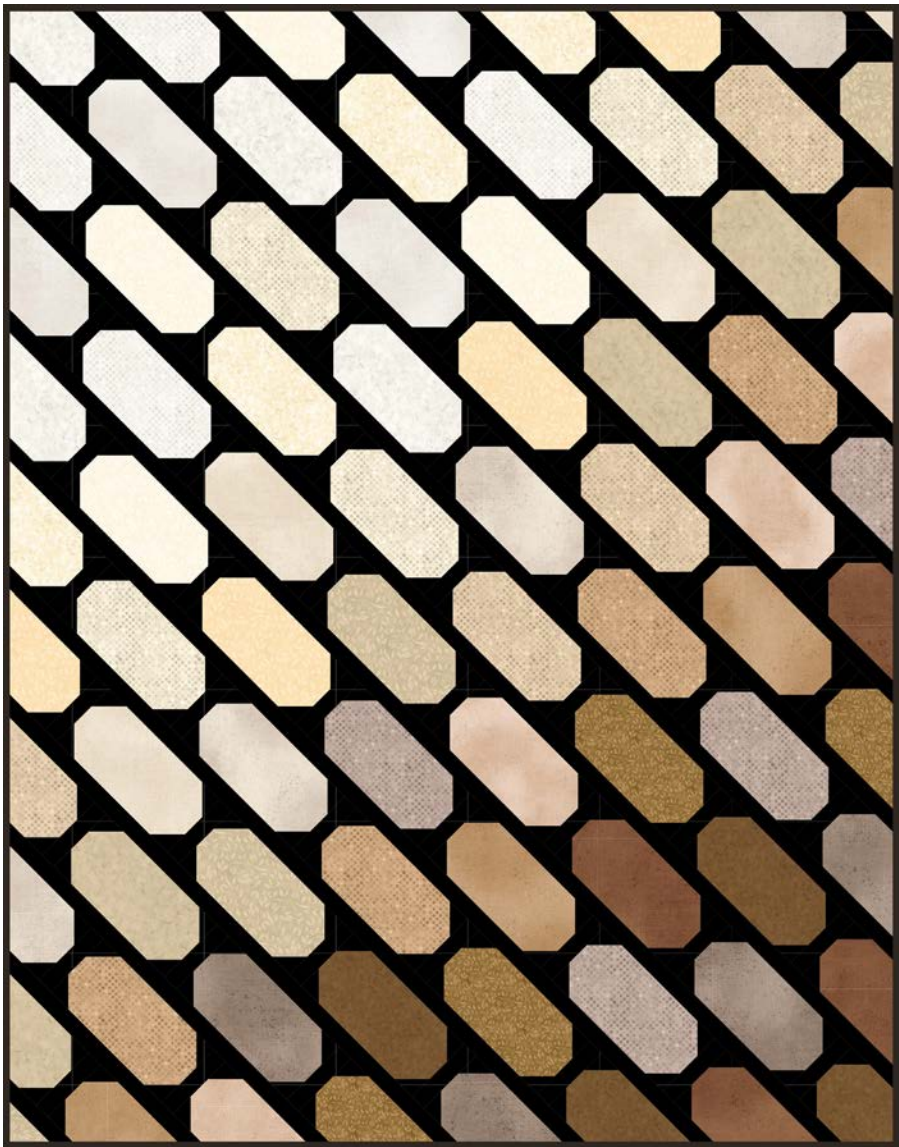
Suggested Backing
W130-011-920
3½ yards

Kindly note, our free patterns are not to be sold nor hosted on any other websites. We appreciate your understanding.

All seam allowances are ¼" unless otherwise stated.
Press seams towards Fabric B unless otherwise stated

WOF = Width of Fabric (selvage to selvage)
LOF = Length of Fabric

Fundamentals: Head to Taupe



Fabric Guide



Fabric A
1 Stack
Head to Taupe-10



Fabric B
EC-795
2 yards



Binding
EC-795
5/8 yard



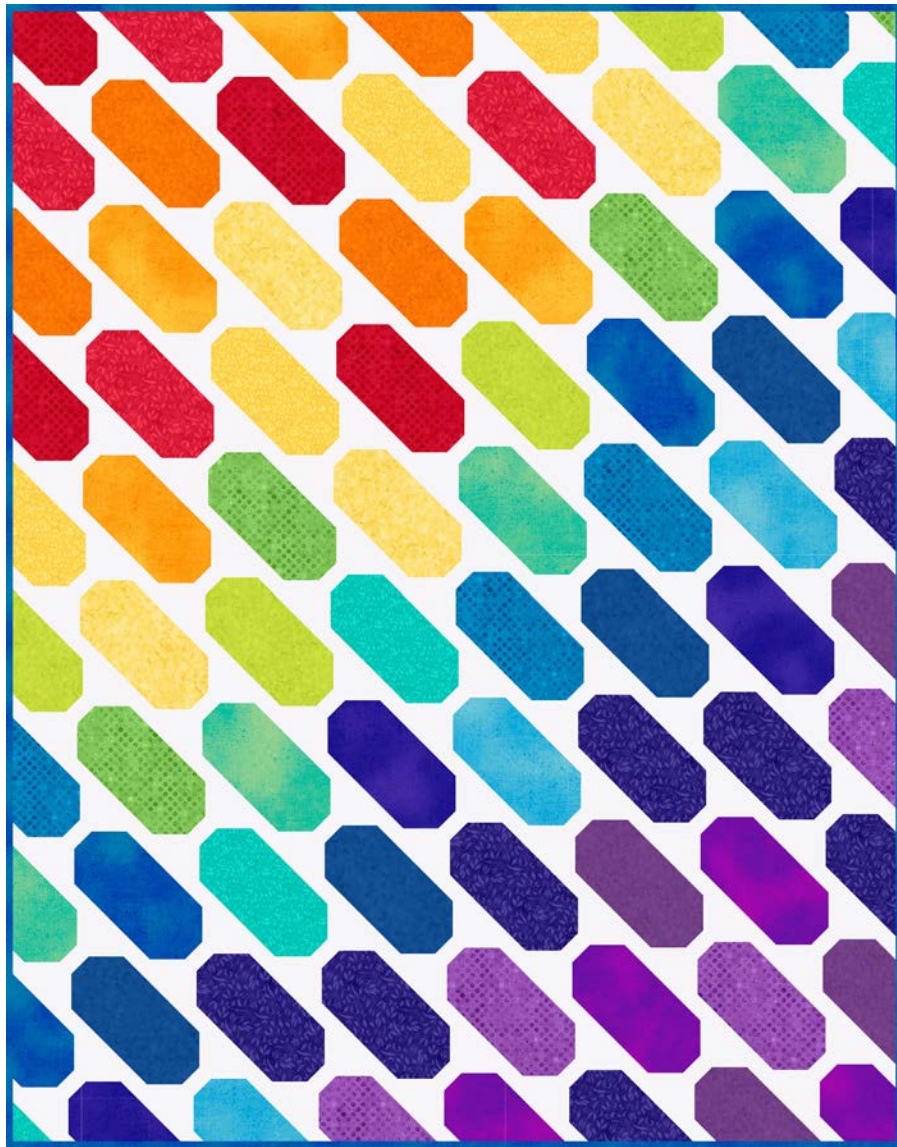
Suggested Backing
W165-001-044
3½ yards

Kindly note, our free patterns are not to be sold nor hosted on any other websites. We appreciate your understanding.

All seam allowances are 1/4" unless otherwise stated.
Press seams towards Fabric B unless otherwise stated

WOF = Width of Fabric (selvage to selvage)
LOF = Length of Fabric

Fundamentals: Pop Culture



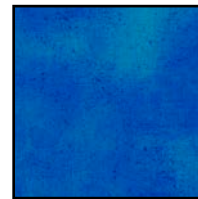
Fabric Guide



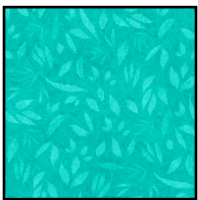
Fabric A
1 Stack
Pop Culture-10



Fabric B
EC-700
2 yards



Binding
W130-001-550
5/8 yard



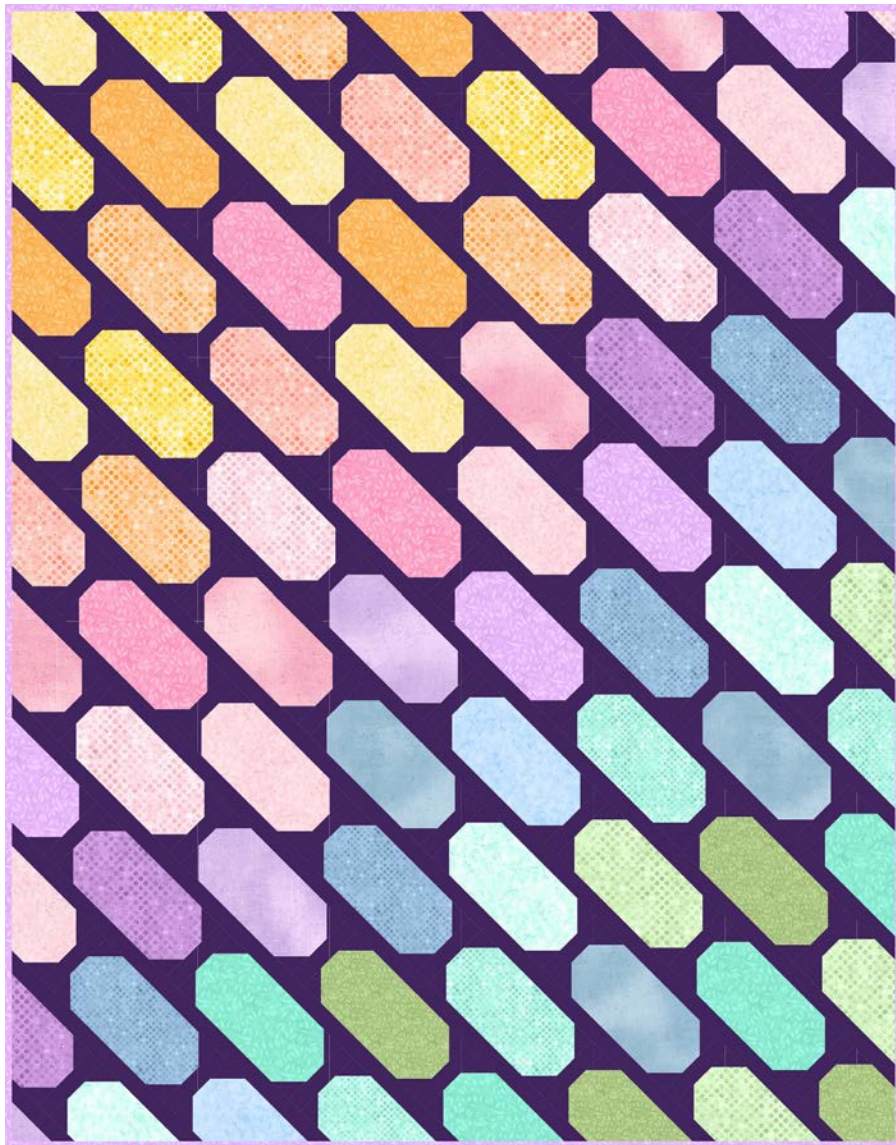
Suggested Backing
W110-002-925
3½ yards

Kindly note, our free patterns are not to be sold nor hosted on any other websites. We appreciate your understanding.

All seam allowances are ¼" unless otherwise stated.
Press seams towards Fabric B unless otherwise stated

WOF = Width of Fabric (selvage to selvage)
LOF = Length of Fabric

Fundamentals: Sheer Bliss



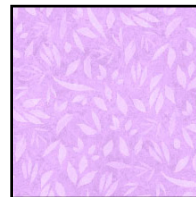
Fabric Guide



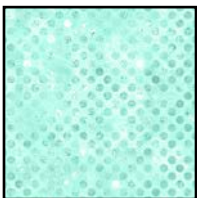
Fabric A
1 Stack
Sheer Bliss-10



Fabric B
EC-443
2 yards



Binding
W110-002-135
5/8 yard



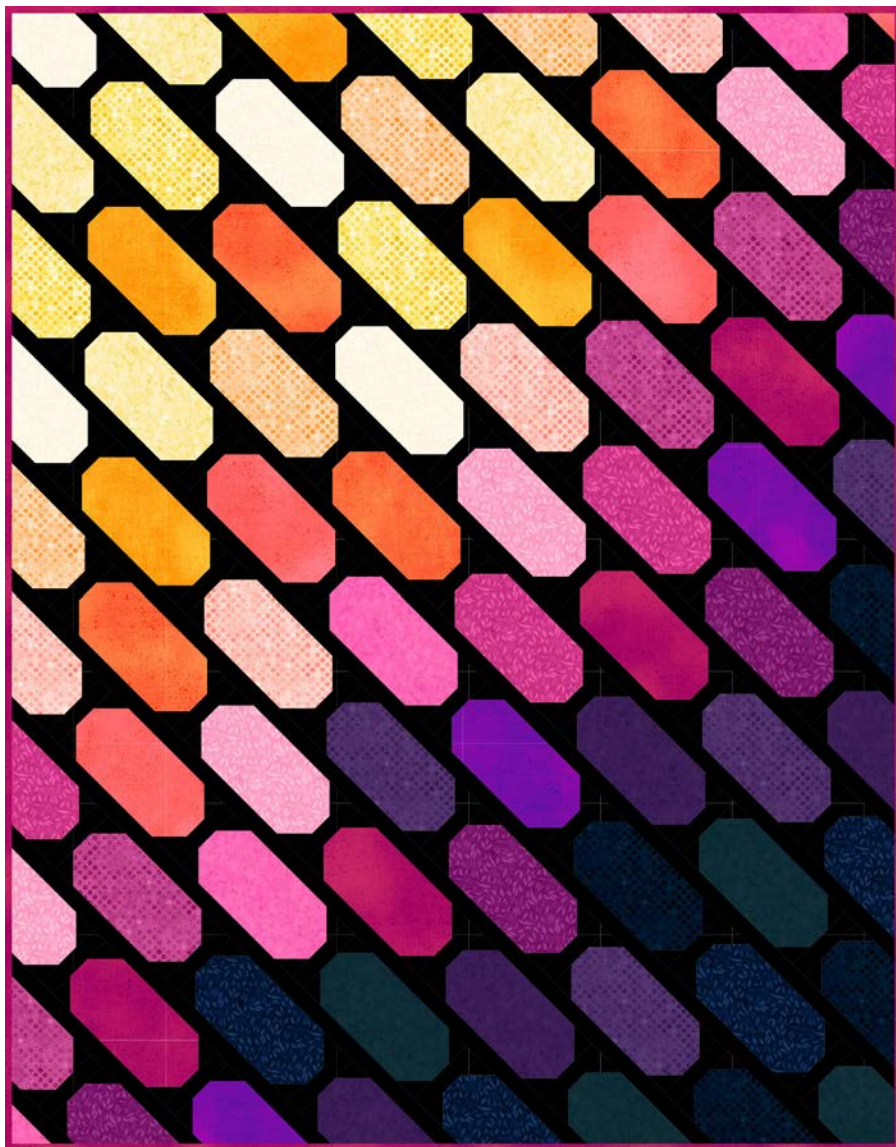
Suggested Backing
W165-001-905
3½ yards

Kindly note, our free patterns are not to be sold nor hosted on any other websites. We appreciate your understanding.

All seam allowances are 1/4" unless otherwise stated.
Press seams towards Fabric B unless otherwise stated

WOF = Width of Fabric (selvage to selvage)
LOF = Length of Fabric

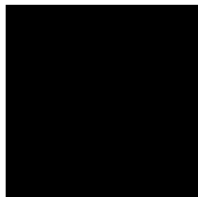
Fundamentals: Solar Flare



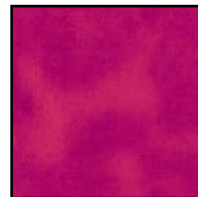
Fabric Guide



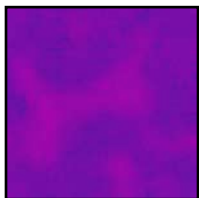
Fabric A
1 Stack
Solar Flare-10



Fabric B
EC-795
2 yards



Binding
W130-001-185
5/8 yard



**Suggested
Backing**
W130-001-430
3½ yards

Kindly note, our free patterns are not to be sold nor hosted on any other websites. We appreciate your understanding.

All seam allowances are 1/4" unless otherwise stated.
Press seams towards Fabric B unless otherwise stated

WOF = Width of Fabric (selvage to selvage)
LOF = Length of Fabric