

Framework Wall Hanging

by Heather Seth for White Owl Textiles
Fall 2025

Difficulty: Beginner



Harvest Delight (39" x 65½") - Page 3



Monarch Meadow (39" x 66") - Page 4



Feathered Festivities (39" x 58½") - Page 5

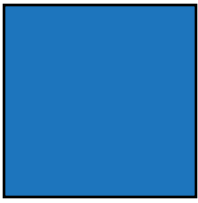


Snowy Greetings (39" x 66½") - Page 6

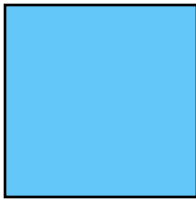


Poinsettia Radiance (39" x 68½") - Page 7

Fabric Guide



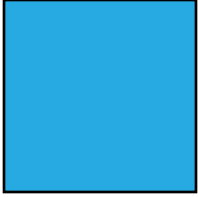
Fabric A (Panel)
1 yard



Fabric B (Stripe)
1 $\frac{1}{8}$ yards



Fabric C
 $\frac{5}{8}$ yard



Binding
 $\frac{1}{2}$ yard



Backing
2 $\frac{5}{8}$ yards

Kindly note, our free patterns are not to be sold nor hosted on any other websites. We appreciate your understanding.

All seam allowances are $\frac{1}{4}$ " unless otherwise stated.
Press seams open unless otherwise stated.

WOF = Width of Fabric (selvage to selvage)
LOF = Length of Fabric

Cutting Instructions

Note: refer to the colorstory pages at the end for each sample projects cutting measurements.

Fabric A	See colorstories on pages 3-4 for panel cut size
Fabric B	See colorstories on pages 3-4 for stripe cut size
Fabric C	Cut 8 strips 2 $\frac{1}{2}$ " x WOF (7 strips may only be needed depending on the size pf the stripe fabric cut. <ul style="list-style-type: none"> • Top and bottom panel borders <ul style="list-style-type: none"> • Trim two strips down to 2 $\frac{1}{2}$" x 35 $\frac{1}{2}$" • Top and bottom outer borders <ul style="list-style-type: none"> • Trim two strips down to 2 $\frac{1}{2}$" x 39 $\frac{1}{2}$" • Side outer borders <ul style="list-style-type: none"> • See colorstories on pages 3-4 for side outer borders
Binding	Cut 6 strips 2 $\frac{1}{2}$ " x WOF

Assembly Instructions

Step 1: Sew Fabric C top and bottom panel borders to the top and bottom of the panel. Press towards Fabric C.

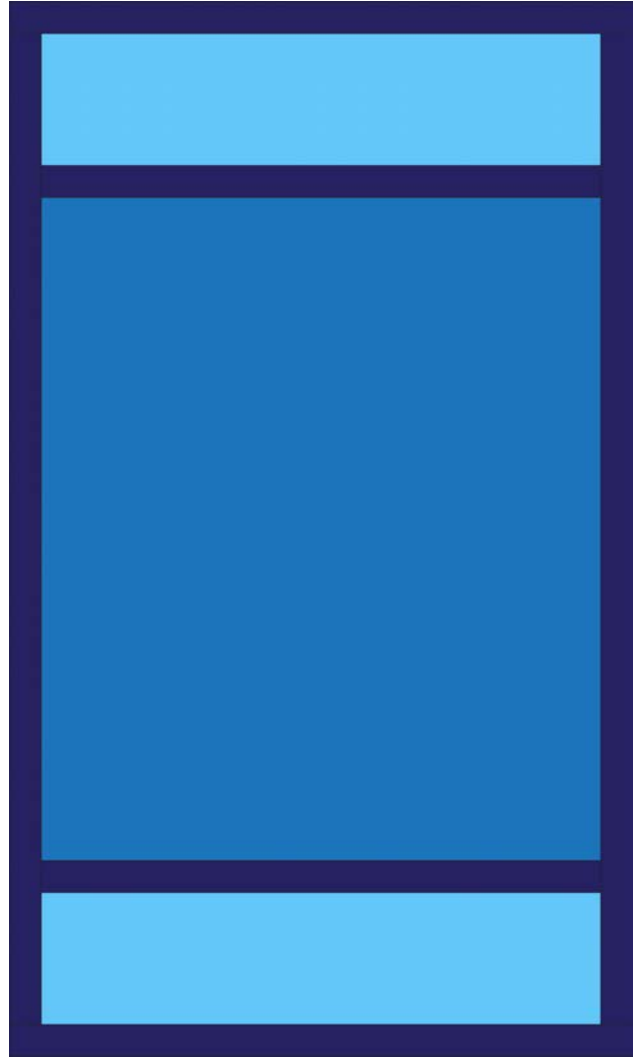


Step 2: Sew Fabric B strips to the top and bottom of panel from step 2. Press towards Fabric C.



Step 3: Sew the Fabric C side outer borders to the sides of the quilt top from Step 2. Press towards Fabric C outer borders.

Step 4: Sew the Fabric C top and bottom outer borders to the top and bottom of the quilt top from Step 3. Press towards Fabric C outer borders.



Woohoo! Your quilt top is now finished. Now, quilt and bind it using your preferred method.

Harvest Delight



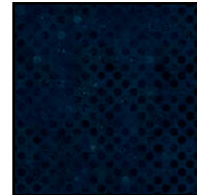
Fabric Guide



Fabric A (Panel)
W135-010-508
1 yard



Fabric B (Stripe)
W135-011-508
1 1/8 yards



Fabric C
W165-001-585
5/8 yard



Binding
W135-016-550
1/2 yard



Suggested Backing
W135-013-523
2 5/8 yards

Kindly note, our free patterns are not to be sold nor hosted on any other websites. We appreciate your understanding.

All seam allowances are 1/4" unless otherwise stated.
Press seams open unless otherwise stated.

WOF = Width of Fabric (selvage to selvage)
LOF = Length of Fabric

Cutting Instructions

Fabric A	Fussy cut panel to 35 1/2" x 41 1/2"
Fabric B	Fussy cut two stripe sections your 8 3/4" x LOF - Trim each strip to 35 1/2" wide.
Fabric C	Side outer borders <ul style="list-style-type: none"> Sew three strips together end-to-end to create one long strip. From the resulting strip cut 2 strips 2 1/2" x 62"

Monarch Meadow



Fabric Guide



Fabric A (Panel)
W100-024-032
1 yard



Fabric B (Stripe)
W100-025-730
1 1/8 yards



Fabric C
W100-029-862
5/8 yard



Binding
W100-034-330
1/2 yard



Suggested Backing
W100-030-727
2 5/8 yards

Kindly note, our free patterns are not to be sold nor hosted on any other websites. We appreciate your understanding.

All seam allowances are 1/4" unless otherwise stated.
Press seams open unless otherwise stated.

WOF = Width of Fabric (selvage to selvage)
LOF = Length of Fabric

Cutting Instructions

Fabric A	Fussy cut panel to 35 1/2" x 42"
Fabric B	Fussy cut two stripe sections your 8 3/4" x LOF - Trim each strip to 35 1/2" wide.
Fabric C	Side outer borders <ul style="list-style-type: none"> Sew four strips together end-to-end to create one long strip. From the resulting strip cut 2 strips 2 1/2" x 62 1/2"

Feathered Festivities



Fabric Guide



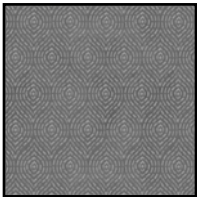
Fabric A (Panel)
W120-001-063
1 yard



Fabric B (Stripe)
W120-003-736
1 1/8 yards



Fabric C
W120-011-725
5/8 yard



Binding
W120-010-760
1/2 yard



Suggested Backing
W120-007-763
2 5/8 yards

Kindly note, our free patterns are not to be sold nor hosted on any other websites. We appreciate your understanding.

All seam allowances are 1/4" unless otherwise stated.
Press seams open unless otherwise stated.

WOF = Width of Fabric (selvage to selvage)
LOF = Length of Fabric

Cutting Instructions

Fabric A	Fussy cut panel to 35 1/2" x 42"
Fabric B	Fussy cut two stripe sections your 5" x LOF - Trim each strip to 35 1/2" wide.
Fabric C	Side outer borders <ul style="list-style-type: none">Sew four strips together end-to-end to create one long strip. From the resulting strip cut 2 strips 2 1/2" x 55"

Snowy Greetings



Fabric Guide



Fabric A (Panel)

W105-029-306

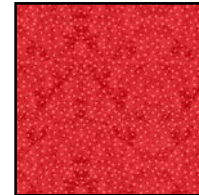
1 yard



Fabric B (Stripe)

W105-030-063

1 1/8 yards



Fabric C

W105-038-355

5/8 yard



Binding

W105-039-675

1/2 yard



Suggested Backing

W105-034-336

2 5/8 yards

Kindly note, our free patterns are not to be sold nor hosted on any other websites. We appreciate your understanding.

All seam allowances are 1/4" unless otherwise stated.
Press seams open unless otherwise stated.

WOF = Width of Fabric (selvage to selvage)
LOF = Length of Fabric

Cutting Instructions

Fabric A	Fussy cut panel to 35 1/2" x 41 1/2"
Fabric B	Fussy cut two stripe sections your 9 1/4" x LOF - Trim each strip to 35 1/2" wide.
Fabric C	Side outer borders <ul style="list-style-type: none"> Sew four strips together end-to-end to create one long strip. From the resulting strip cut 2 strips 2 1/2" x 63"

Poinsettia Radiance



Fabric Guide



Fabric A (Panel)
W110-003-306
1 yard



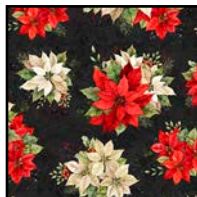
Fabric B (Stripe)
W110-005-306
1 $\frac{1}{8}$ yards



Fabric C
W110-012-700
 $\frac{5}{8}$ yard



Binding
W110-012-355
 $\frac{1}{2}$ yard



Suggested Backing
W110-007-730
2 $\frac{5}{8}$ yards

Kindly note, our free patterns are not to be sold nor hosted on any other websites. We appreciate your understanding.

All seam allowances are $\frac{1}{4}$ " unless otherwise stated.
Press seams open unless otherwise stated.

WOF = Width of Fabric (selvage to selvage)
LOF = Length of Fabric

Cutting Instructions

Fabric A	Fussy cut panel to 35 $\frac{1}{2}$ " x 42"
Fabric B	Fussy cut two stripe sections your 5" x LOF - Trim each strip to 35 $\frac{1}{2}$ " wide.
Fabric C	Side outer borders <ul style="list-style-type: none"> Sew four strips together end-to-end to create one long strip. From the resulting strip cut 2 strips 2$\frac{1}{2}$" x 55"