

# Framework Throw Pillow

by Heather Seth and Elise Lea for White Owl Textiles

Finished size: 18" x 18"



Tranquil Blooms - Page 3



Feathered Festivities - Page 4



Merry & Bright - Page 5



Poinsettia Radiance - Page 6



White Owl  
TEXTILES

## Fabric Guide



**Fabric A**  
Fat Quarter or  
one 11½" square



**Fabric B**  
⅓ yard



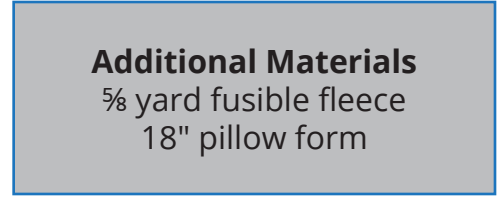
**Fabric C**  
⅓ yard



**Fabric D**  
⅓ yard



**Backing**  
⅓ yard



**Additional Materials**  
⅝ yard fusible fleece  
18" pillow form

*Kindly note, our free patterns are not to be sold nor hosted on any other websites. We appreciate your understanding.*

All seam allowances are ¼" unless otherwise stated.  
Press seams open unless otherwise stated.  
WOF = Width of Fabric (selvage to selvage)

WST = Wrong Sides Together  
RST = Right Sides Together

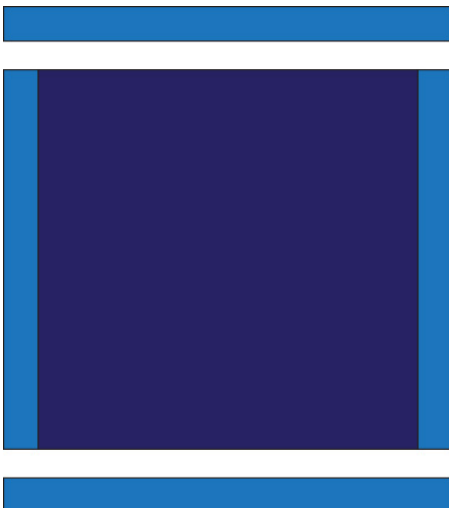
## Cutting Instructions

Fabric A	Cut one 11½" x 11½" square (fussy cut if using a panel)
Fabric B	Cut two strips 1½" x WOF - subcut two 1½" x 11" strips and two 1½" x 13½" strips
Fabric C	Cut two strips 1½" x WOF - subcut two 1½" x 13½" strips and two 1½" x 15½" strips
Fabric D	Cut two strips 2" x WOF - subcut two 2" x 15½" strips and two 2" x 18½" strips
Backing	Cut one strip 13" x WOF - subcut two 13" x 18½" rectangles

## Piecing Instructions

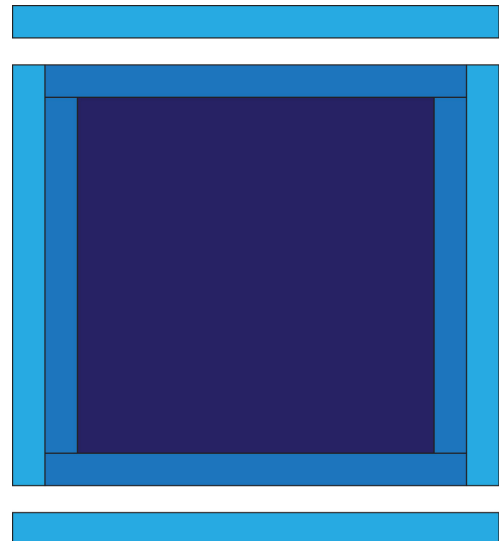
**Step 1:** Sew a 1½" x 11½" Fabric B strip to both sides of the 11½" x 11½" Fabric A square. Press.

**Step 2:** Sew a 1½" x 13½" Fabric B strip to the top and bottom of the 11½" x 11½" Fabric A square from Step 1. Press.



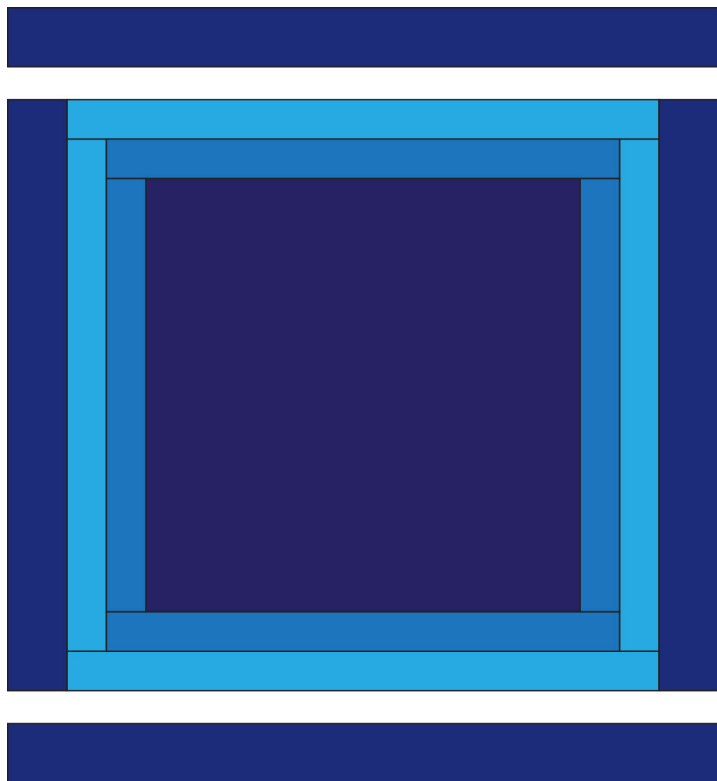
**Step 3:** Sew a 1½" x 13½" Fabric C strip to both sides of the pillow front from Step 2. Press.

**Step 4:** Sew a 1½" x 15½" Fabric C strip to the top and bottom of the pillow top from Step 3. Press.



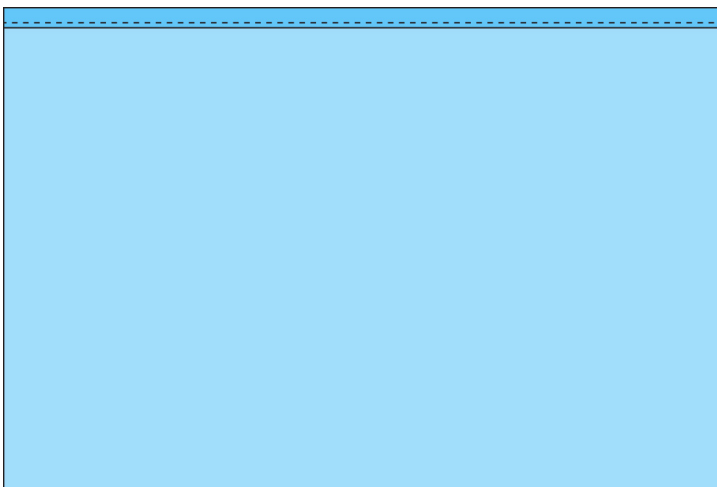
**Step 5:** Sew a 2" x 15½" Fabric D strip to both sides of the pillow front from Step 4. Press.

**Step 6:** Sew a 1½" x 18½" Fabric D strip to the top and bottom of the pillow top from Step 5. Press.



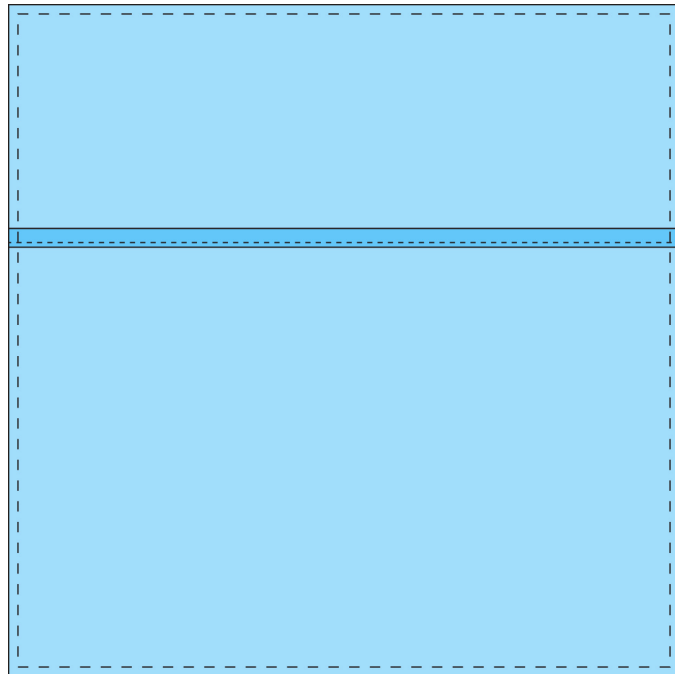
**Step 7:** Fuse 18½" x 18½" square of fusible fleece to the back of the pillow front.

**Step 8:** Fold under the top of one 13" x 18½" Backing Fabric rectangle ½" WST. Press. Fold under again ½" so raw edge is encased. Top stitch ⅛" away from the edge.

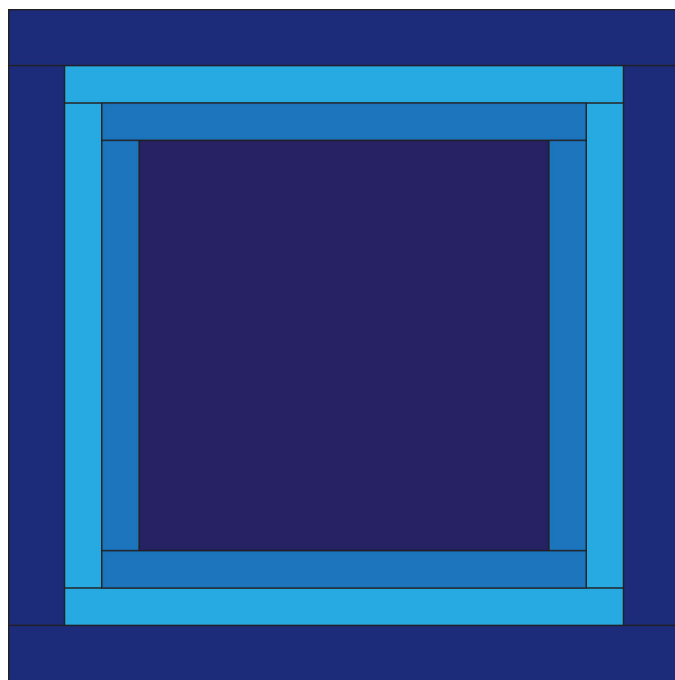


Repeat with second backing rectangle.

**Step 9:** Lay the two backing pieces on top of the pillow front RST. Putting the top piece on first and making sure the folded over seams are away from the raw edge and running horizontally across the middle of the pillow top. Stitch through all three layers around the outside of the pillow.



Press and turn right side out.



**Woohoo!** Your Throw Pillow is finished. Now, fill with your pillow form and enjoy!



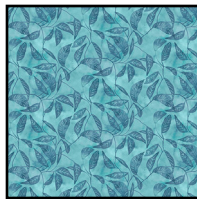
# Tranquil Blooms



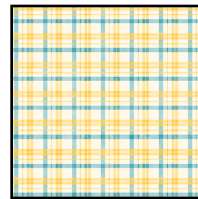
## Fabric Guide



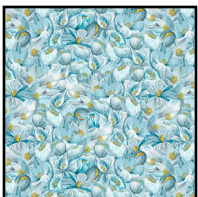
**Fabric A**  
W150-001-800  
Fat Quarter or  
one 11½" square



**Fabric B**  
W150-008-527  
⅓ yard



**Fabric C**  
W150-011-025  
⅓ yard



**Fabric D**  
W150-006-505  
⅓ yard



**Backing\***  
W150-007-056  
⅓ yard

**Additional Materials**  
⅝ yard fusible fleece  
18" pillow form

\*Backing Fabric is also used as Fabric D



## Feathered Festivities



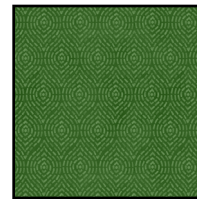
### Fabric Guide



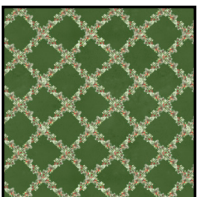
**Fabric A**  
W120-002-736  
Fat Quarter or  
one 11½" square



**Fabric B**  
W120-009-650  
⅓ yard



**Fabric C**  
W120-010-650  
⅓ yard



**Fabric D**  
W120-008-663  
⅓ yard



**Backing**  
W120-007-663  
⅓ yard

**Additional Materials**  
⅝ yard fusible fleece  
18" pillow form



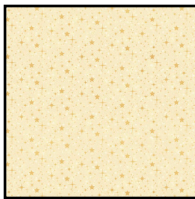
## Merry & Bright



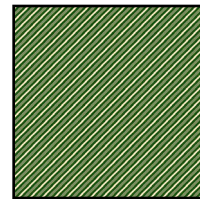
### Fabric Guide



**Fabric A**  
W130-013-632  
Fat Quarter or  
one 11½" square



**Fabric B**  
W130-022-022  
⅓ yard



**Fabric C**  
W130-023-606  
⅓ yard



**Fabric D**  
W130-018-626  
⅓ yard



**Backing**  
W130-019-663  
⅓ yard

**Additional Materials**  
⅝ yard fusible fleece  
18" pillow form



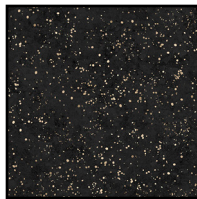
# Poinsettia Radiance



## Fabric Guide



**Fabric A**  
W110-004-730  
Fat Quarter or  
one 11½" square



**Fabric B**  
W110-012-700  
⅓ yard



**Fabric C**  
W110-013-360  
⅓ yard



**Fabric D**  
W110-006-336  
⅓ yard



**Backing**  
W110-008-330  
⅓ yard

**Additional Materials**  
⅝ yard fusible fleece  
18" pillow form