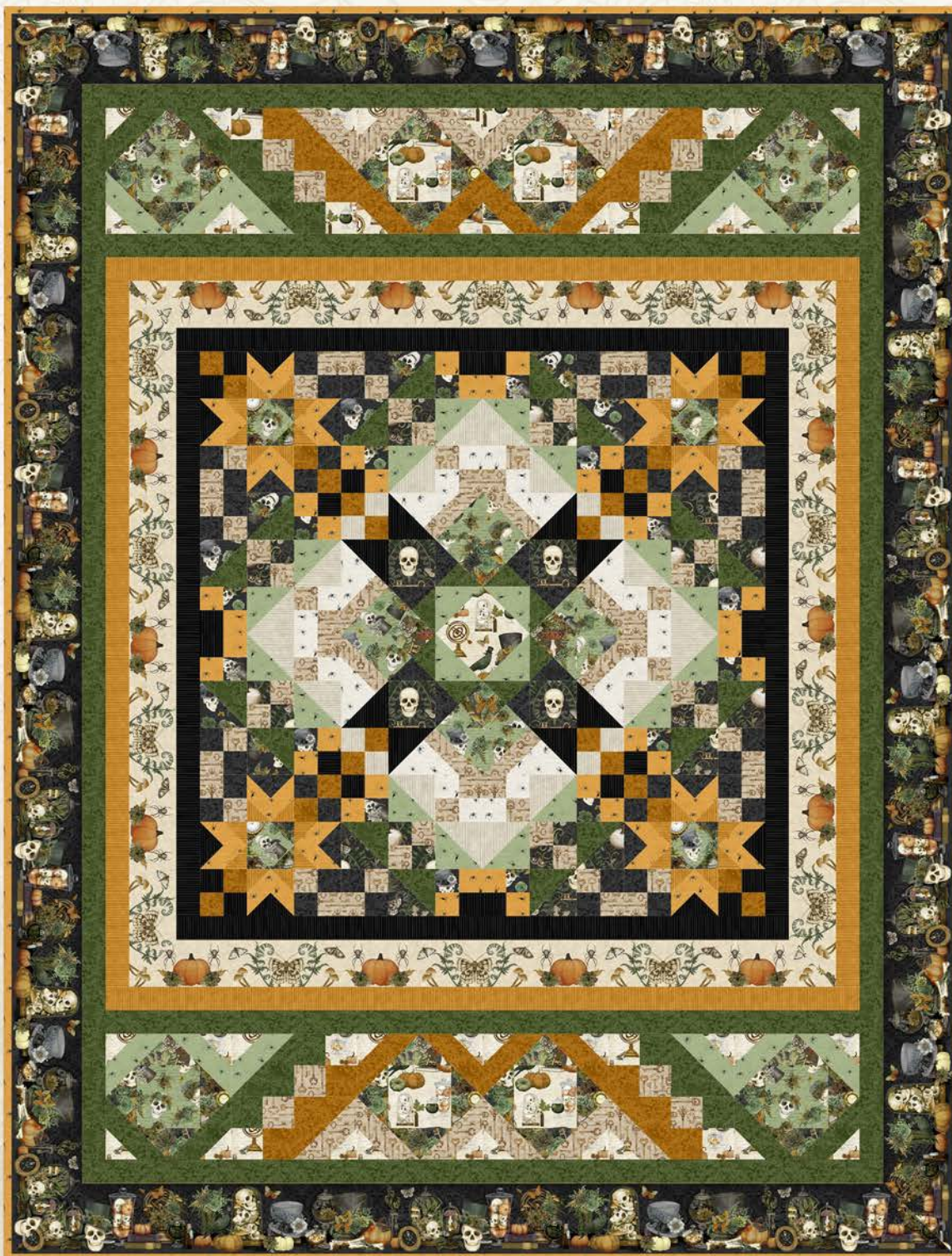


# *Dark Academia*

A 6-Month Block of the Month Pattern  
Designed by Heather Seth for White Owl Textiles



Approximately 87" x 99"





# Dark Academia Fabrics

## Fabric Guide



**Fabric A**  
W100-014-807



**Fabric B**  
W100-016-835



**Fabric C**  
W100-017-072



**Fabric D**  
W100-018-607



**Fabric E**  
W100-018-707



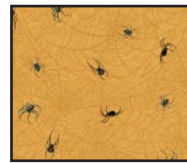
**Fabric F**  
W100-019-767



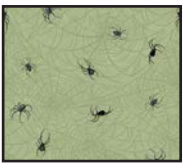
**Fabric G**  
W100-020-020



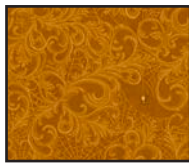
**Fabric H**  
W100-021-077



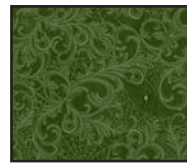
**Fabric I**  
W100-021-277



**Fabric J**  
W100-021-677



**Fabric K**  
W100-022-282



**Fabric L**  
W100-022-670



**Fabric M**  
W100-022-790



**Fabric N**  
W100-023-032



**Fabric O**  
W100-023-275



**Fabric P**  
W100-023-790



*Kindly note, our free patterns are not to be sold nor hosted on any other websites. We appreciate your understanding.*

All seam allowances are  $\frac{1}{4}$ " unless otherwise stated.

FS = Fat Sixteenth

FE = Fat Eighth

FQ = Fat Quarter

## Fabric Requirements

Total Yardage		SKU	Month #1	Month #2	Month #3	Month #4	Month #5	Month #6
2 <sup>1</sup> / <sub>3</sub> yd	A	W100-014-807						2 <sup>1</sup> / <sub>3</sub> yd
<sup>5</sup> / <sub>8</sub> yd	B	W100-016-835	FE		<sup>1</sup> / <sub>8</sub> yd	<sup>1</sup> / <sub>2</sub> yd		
<sup>3</sup> / <sub>4</sub> yd	C	W100-017-072	FE			<sup>3</sup> / <sub>8</sub> yd	<sup>1</sup> / <sub>8</sub> yd	
<sup>1</sup> / <sub>2</sub> yd	D	W100-018-607	FQ		FE	FE		
<sup>1</sup> / <sub>4</sub> yd	E	W100-018-707		<sup>1</sup> / <sub>4</sub> yd				
<sup>3</sup> / <sub>8</sub> yd	F	W100-019-767	<sup>1</sup> / <sub>4</sub> yd	<sup>1</sup> / <sub>8</sub> yd				
1 yd	G	W100-020-020	<sup>1</sup> / <sub>4</sub> yd	<sup>1</sup> / <sub>4</sub> yd	<sup>1</sup> / <sub>8</sub> yd	<sup>1</sup> / <sub>6</sub> yd	FE	
<sup>1</sup> / <sub>4</sub> yd	H	W100-021-077	FE	<sup>1</sup> / <sub>8</sub> yd				
<sup>1</sup> / <sub>2</sub> yd	I	W100-021-277		<sup>1</sup> / <sub>6</sub> yd	<sup>1</sup> / <sub>4</sub> yd			
<sup>5</sup> / <sub>8</sub> yd	J	W100-021-677	FS	<sup>1</sup> / <sub>6</sub> yd		<sup>1</sup> / <sub>6</sub> yd	FE	
<sup>5</sup> / <sub>8</sub> yd	K	W100-022-282	FS		<sup>1</sup> / <sub>8</sub> yd	<sup>1</sup> / <sub>6</sub> yd	FE	
1 <sup>1</sup> / <sub>4</sub> yd	L	W100-022-670	FE	<sup>1</sup> / <sub>6</sub> yd		<sup>1</sup> / <sub>6</sub> yd	FE	<sup>5</sup> / <sub>8</sub> yd
<sup>1</sup> / <sub>2</sub> yd	M	W100-022-790	FE	<sup>1</sup> / <sub>8</sub> yd	<sup>1</sup> / <sub>6</sub> yd			
<sup>1</sup> / <sub>3</sub> yd	N	W100-023-032	FS	<sup>1</sup> / <sub>6</sub> yd				
<sup>1</sup> / <sub>2</sub> yd	O	W100-023-275			<sup>1</sup> / <sub>6</sub> yd			<sup>1</sup> / <sub>3</sub> yd
<sup>2</sup> / <sub>3</sub> yd	P	W100-023-790	FE	<sup>1</sup> / <sub>8</sub> yd	<sup>1</sup> / <sub>6</sub> yd			<sup>1</sup> / <sub>4</sub> yd
<sup>5</sup> / <sub>8</sub> yd		Binding - Quilt is pictured with Fabric I						
4 yd	45"	Backing - Fabric of choice						
2 yd	108"							

# Dark Academia BOM - Month 1

## Block 1 - Make 1 total (18" finished size)

### Fabric Guide



**Fabric B**  
W100-016-835  
Fat Eighth



**Fabric C**  
W100-017-072  
Fat Eighth



**Fabric D**  
W100-018-607  
Fat Quarter



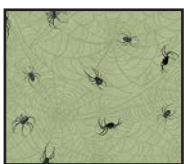
**Fabric F**  
W100-019-767  
1/4 yard



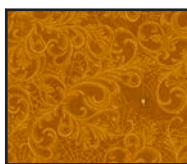
**Fabric G**  
W100-020-020  
1/4 yard



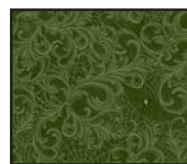
**Fabric H**  
W100-021-077  
Fat Eighth



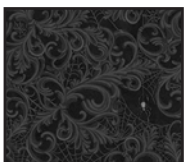
**Fabric J**  
W100-021-677  
Fat Sixteenth



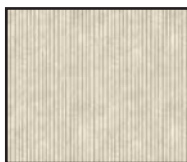
**Fabric K**  
W100-022-282  
Fat Sixteenth



**Fabric L**  
W100-022-670  
Fat Eighth



**Fabric M**  
W100-022-790  
Fat Eighth



**Fabric N**  
W100-023-032  
Fat Sixteenth



**Fabric P**  
W100-023-790  
Fat Eighth



*Kindly note, our free patterns are not to be sold nor hosted on any other websites. We appreciate your understanding.*

All seam allowances are 1/4" unless otherwise stated.  
Press seams open unless otherwise stated.

WOF = Width of Fabric (selvage to selvage)  
RST = Right Sides Together

### Cutting Instructions

B	1 - 4½" x WOF strip cut into 2 - 4½" squares
C	1 - 6½" square
D	1 - 4½" x WOF strip cut into 2 - 4½" squares 2 - 3½" x WOF strip cut into 4 - 3½" x 6½" rectangles
F	4 - 3½" squares (fussy cut, centering the skulls)
G	1 - 2" x WOF strip cut into: 4 - 2" squares 1 - 3½" x WOF strip cut into 8 - 3½" squares
H	1 - 2" x WOF strip cut into: 8 - 2" squares 1 - 4" x WOF strip cut into 4 - 4" squares
J	1 - 3½" x WOF strip cut into 4 - 3½" squares



## Cutting Instructions

K	1 - 2" x WOF strip cut into: 8 - 2" squares
L	1 - 4½" x WOF strip cut into 2 - 4½" squares
M	1 - 4½" x WOF strip cut into 2 - 4½" squares
N	1 - 2" x WOF strip cut into: 8 - 2" squares
P	2- 4" x WOF strip cut into 4 - 4" squares

## Piecing Instructions

**Step 1:** Draw a diagonal line on the wrong side of all of the 2" G and H squares, 3½" J squares and the 4½" D and B squares.

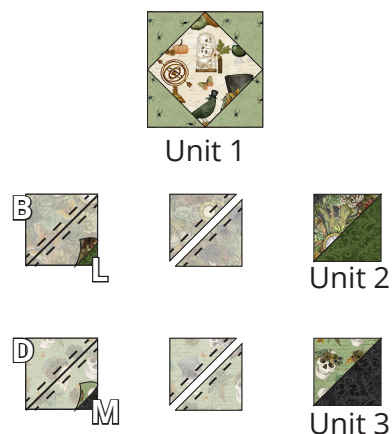


**Step 2:** Arrange a marked 3½" J square on a corner of a 6½" C square as shown, RST. Sew along the marked line. Trim seam allowance to ¼". Press. Repeat for all four corners. Make one Units 1.



**Step 3:** Arrange a marked 4½" B square with a 4½" L square RST. Sew on each side of the diagonal line, ¼" away from the diagonal line as shown. Cut on the center line. Press both. Trim each to a 4" square, making sure to center the seam. Make four Units 2.

Repeat with a marked 4½" D square and a 4½" M square. Make four Units 3.



**Step 4:** Draw a diagonal line on the wrong side of all the Units 2. The line should divide the triangles as shown. Arrange a marked Unit 2 with a Unit 3, as shown, RST. The L triangle should be on top of the M triangle. Sew on each side of the diagonal line, ¼" away from the diagonal line as shown. Cut on the center line. Press both. Trim each to a 3½" square, making sure to center the seam. Make four of each Units 4 and 5.



**Step 5:** Arrange a Unit 4 with a Unit 5, RST. All the triangles should be lined up, B on top of B, etc. Sew along the B edge. Press. Make four Units 6.



**Step 6:** Arrange a marked 2" G square on a corner of a 4" H square as shown, RST. Sew along the marked line. Trim seam allowance to ¼". Press. Make four Units 7. Draw a diagonal line on the wrong side of all the Units 7. The line should divide the G triangle as shown.



**Step 7:** Arrange a marked Unit 7 with a 4" P square, as shown, RST. Sew on each side of the diagonal line, ¼" away from the diagonal line as shown. Cut on the center line. Press both. Trim each to a 3½" square, making sure to center the seam. Make four of each Units 8 and 9.



**Step 8:** Arrange a marked 2" H square on a corner of a 3½" G square as shown, RST. Sew along the marked line. Trim seam allowance to ¼". Press. Make four Units 10. Draw a diagonal line on the wrong side of all the Units 10. Make sure the line runs parallel to the corner H triangle as shown.



**Step 9:** Arrange a marked Unit 10 on the left side of a 3½" x 6½" D rectangle as shown, RST. Sew along the marked line. Trim seam allowance to ¼". Press. Repeat on the right side. Make four Units 11.



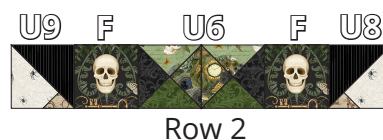
**Step 10:** Sew a 2" K square to a 2" N square, RST. Press. Make eight Units 12. Lay out and then sew two Units 12 together as shown, RST. Press. Make four Units 13.



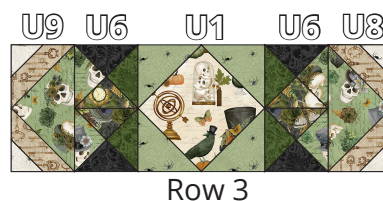
**Step 11:** Lay out two Units 13 with one each Units 8, 9, and 11 as shown. Pay close attention to the direction of the Units. Sew, RST. Press as you sew. Make two Rows 1.



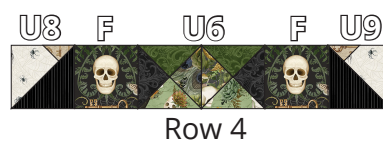
**Step 12:** Lay out two 3½" F squares with one each Units 6, 8, and 9 as shown. Pay close attention to the direction of the Units. Sew, RST. Press as you sew. Make one Row 2.



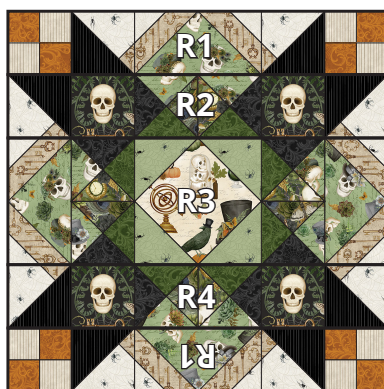
**Step 13:** Lay out two Units 6 with one of each Units 1, 8 and 9 as shown. Pay close attention to the direction of the Units. Sew, RST. Press as you sew. Make one Row 3.



**Step 14:** Lay out two 3½" F squares with one each Units 6, 8, and 9 as shown. Pay close attention to the direction of the Units. Sew, RST. Press as you sew. Make one Row 4.



**Step 15:** Lay out two of each Rows 1 with one each Rows 2-4 as shown. Sew the rows together, press as you sew. Make one Block 1.



Block 1



# Dark Academia BOM - Month 2

## Block 2 - Make 8 total (9" finished size)

### Fabric Guide



**Fabric E**  
W100-018-707  
1/4 yard



**Fabric F**  
W100-019-767  
1/8 yard



**Fabric G**  
W100-020-020  
1/4 yard



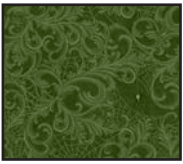
**Fabric H**  
W100-021-077  
1/8 yard



**Fabric I**  
W100-021-277  
1/6 yard



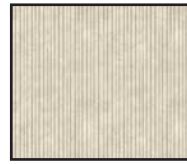
**Fabric J**  
W100-021-677  
1/6 yard



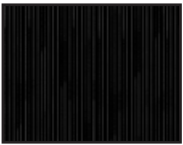
**Fabric L**  
W100-022-670  
1/6 yard



**Fabric M**  
W100-022-790  
1/8 yard



**Fabric N**  
W100-023-032  
1/6 yard



**Fabric P**  
W100-023-790  
1/8 yard



Kindly note, our free patterns are not to be sold nor hosted on any other websites. We appreciate your understanding.

All seam allowances are 1/4" unless otherwise stated.  
Press seams open unless otherwise stated.

WOF = Width of Fabric (selvage to selvage)  
RST = Right Sides Together

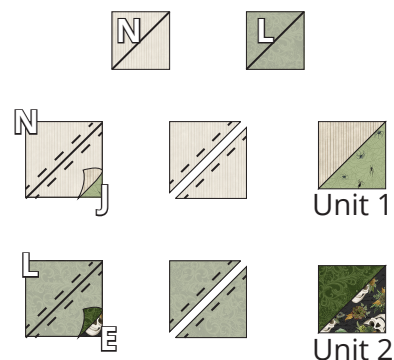
### Cutting Instructions

E	1 - 2" x WOF strip cut into: 16 - 2" squares 1 - 4" x WOF strip cut into 8 - 4" squares
F	1 - 2" x WOF strip cut into: 16 - 2" squares
G	3 - 2" x WOF strip cut into: 48 - 2" squares
H	1 - 2" x WOF strip cut into: 16 - 2" squares
I	2 - 2" x WOF strip cut into: 32 - 2" squares
J	1 - 4" x WOF strip cut into 8 - 4" squares
L	1 - 4" x WOF strip cut into 8 - 4" squares
M	1 - 2" x WOF strip cut into: 16 - 2" squares
N	1 - 4" x WOF strip cut into 8 - 4" squares
P	1 - 2" x WOF strip cut into: 16 - 2" squares

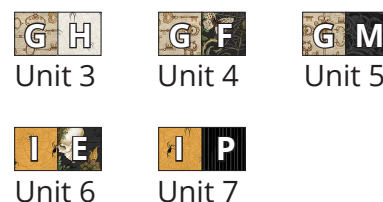
# Piecing Instructions

**Step 1:** Draw a diagonal line on the wrong side of all of the 4" N and L squares.

**Step 2:** Arrange a marked 4" N square with a 4" J square RST. Sew on each side of the diagonal line, ¼" away from the diagonal line as shown. Cut on the center line. Press both. Trim each to a 3½" square, making sure to center the seam. Make sixteen Units 1. Repeat with a marked 4" L square with a 4" E square. Make sixteen Units 2.



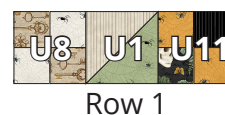
**Step 3:** Gather all of the 2" squares: E, F, G, H, I, M, and P. Sew the squares together in pairs as shown, RST. Press. Make sixteen each of Units 3-7.  
Unit 3: G and H, Unit 4: G and F, Unit 5: G and M, Unit 6: I and E, Unit 7: I and P



**Step 4:** Lay out and then sew two Units 3 together as shown. Press. Make eight Units 8. Repeat for Units 4 and 5. Make eight each of Units 9 and 10. Lay out and sew one of each Units 6 and 7 together as shown. Press. Make sixteen Units 11.



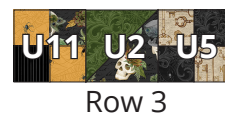
**Step 5:** Lay out one each of Units 1, 8, and 11 together as shown. Pay close attention to the direction of the Units. Sew, RST. Press. Make eight Rows 1.



**Step 6:** Lay out one each of Units 1, 2, and 9 together as shown. Pay close attention to the direction of the Units. Sew, RST. Press. Make eight Rows 2.



**Step 7:** Lay out one each of Units 2, 5, and 11 together as shown. Pay close attention to the direction of the Units. Sew, RST. Press. Make eight Rows 3.



**Step 8:** Lay out Rows 1-3 together as shown. Sew, RST. Press. Make eight Blocks 2.



Block 2



# Dark Academia BOM - Month 3

## Block 3 - Make 4 total (9" finished size)

### Fabric Guide



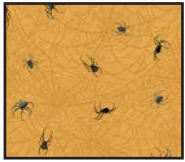
**Fabric B**  
W100-016-835  
 $\frac{1}{8}$  yard



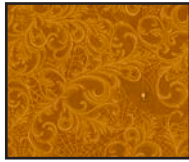
**Fabric D**  
W100-018-607  
Fat Eighth



**Fabric G**  
W100-020-020  
 $\frac{1}{8}$  yard



**Fabric I**  
W100-021-277  
 $\frac{1}{4}$  yard



**Fabric K**  
W100-022-282  
 $\frac{1}{8}$  yard



**Fabric M**  
W100-022-790  
 $\frac{1}{6}$  yard



**Fabric O**  
W100-023-275  
 $\frac{1}{6}$  yard



**Fabric P**  
W100-023-790  
 $\frac{1}{6}$  yard



Kindly note, our free patterns are not to be sold nor hosted on any other websites. We appreciate your understanding.

All seam allowances are  $\frac{1}{4}$ " unless otherwise stated.  
Press seams open unless otherwise stated.

WOF = Width of Fabric (selvage to selvage)  
RST = Right Sides Together

### Cutting Instructions

B	1 - 2" x WOF strip cut into: 16 - 2" squares
D	4 - 3½" squares (fussy cut, centering skulls)
G	1 - 2" x WOF strip cut into: 16 - 2" squares
I	4 - 2" x WOF strip cut into: 32 - 2" squares 16 - 2" x 3½" rectangles
K	2 - 2" x WOF strip cut into: 16 - 2" squares
M	2 - 2" x WOF strip cut into: 24 - 2" squares 8 - 2" x 3½" rectangles
O	2 - 2" x WOF strip cut into 32 - 2" squares
P	2 - 2" x WOF strip cut into: 8 - 2" squares 8 - 2" x 3½" rectangles

# Piecing Instructions

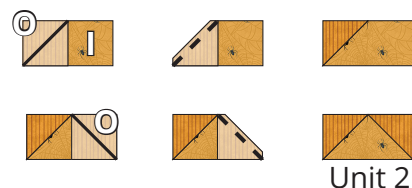
**Step 1:** Draw a diagonal line on the wrong side of all of the 2" B, I, and O squares.



**Step 2:** Arrange a marked 2" B square on a corner of a 3½" D square as shown, RST. Sew along the marked line. Trim seam allowance to ¼". Press. Repeat for all four corners. Make four Units 1.



**Step 3:** Arrange a marked 2" O square on the left side of a 2" x 3½" I rectangle as shown, RST. Sew along the marked line. Trim seam allowance to ¼". Press. Repeat on the right side. Make sixteen Units 2. Repeat with marked 2" I squares on the sides of a 2" x 3½" M rectangle as shown. Make eight Units 3. Repeat with marked 2" I squares on the sides of a 2" x 3½" P rectangle as shown. Make eight Units 4.



**Step 4:** Sew a Unit 2 to a Unit 3 as shown, RST. Press. Make eight Units 5.



Sew a Unit 2 to a Unit 4 as shown, RST. Press. Make eight Units 6.



**Step 5:** Gather all of the 2" squares: G, K, M, and P. Sew the squares together in pairs as shown, RST. Pay special attention to the P stripe direction. Press.



Unit 7: G and M, make sixteen.

Unit 8: M and K, make eight.

Unit 9: K and P with vertical stripes, make four.

Unit 10: K and P with horizontal stripes, make four.



**Step 6:** Lay out and then sew two Units 7 together as shown. Press. Make eight Units 11.



Repeat for Unit 8. Make four Units 12.



Lay out and sew one of each Units 9 and 10 together as shown. Press. Make four Units 13.



**Step 7:** Lay out two each of Units 5 and 6 with one each of Units 1, 11, 12 and 13 together as shown. Pay close attention to the direction of the Units. The P stripes on the Unit 13 should be pointed outward. Sew together in rows first, then sew the rows together. Press as you sew. Make four Blocks 3.





## Dark Academia BOM - Month 4

Blocks 4A-C - Make 2 total of each Blocks A&B, Make 4 total of Block C (8" finished size)

### Fabric Guide



**Fabric B**  
W100-016-835  
 $\frac{1}{2}$  yard



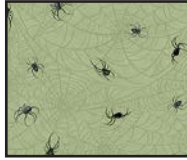
**Fabric C**  
W100-017-072  
 $\frac{3}{8}$  yard



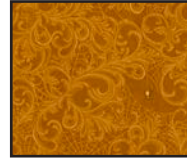
**Fabric D**  
W100-018-607  
Fat Eighth



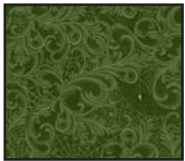
**Fabric G**  
W100-020-020  
 $\frac{1}{6}$  yard



**Fabric J**  
W100-021-677  
 $\frac{1}{6}$  yard



**Fabric K**  
W100-022-282  
 $\frac{1}{6}$  yard



**Fabric L**  
W100-022-670  
 $\frac{1}{6}$  yard



Kindly note, our free patterns are not to be sold nor hosted on any other websites. We appreciate your understanding.

All seam allowances are  $\frac{1}{4}$ " unless otherwise stated.  
Press seams open unless otherwise stated.

WOF = Width of Fabric (selvage to selvage)  
RST = Right Sides Together

### Cutting Instructions

B	6 - 2½" x WOF strip cut into: 16 - 2½ x 4½" rectangles 16 - 2½" x 8½" rectangles
C	2 - 2½" x WOF strip cut into: 32 - 2½" squares 4 - 4½" squares (fussy cut an image in the center)
D	4 - 4½" squares
G	1 - 4½" x WOF strip cut into: 8 - 4½" squares
J	1 - 4½" x WOF strip cut into: 8 - 4½" squares
K	1 - 4½" x WOF strip cut into: 8 - 4½" squares
L	1 - 4½" x WOF strip cut into: 8 - 4½" squares



Block 4A



Block 4B

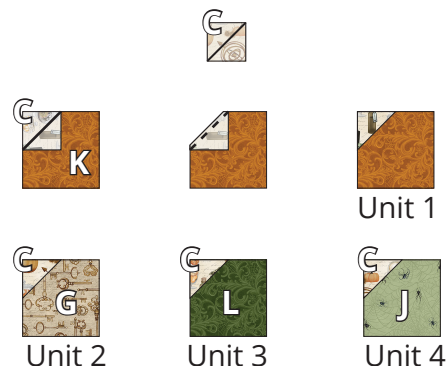


Block 4C

# Piecing Instructions

**Step 1:** Draw a diagonal line on the wrong side of all of the 2½" C squares.

**Step 2:** Arrange a marked 2½" C square on a corner of a 4½" K square as shown, RST. Sew along the marked line. Trim seam allowance to ¼". Press. Make eight Units 1. Repeat with the marked 2½" C squares on the 4½" G, J, and L squares as shown. Make eight of each Units 2-4.



**Step 3:** Draw a diagonal line on the wrong side of all of the Units 1-4. Make sure the line is parallel to the C corner triangles as shown.



**Step 4:** Sew 2½ x 4½" B rectangles to both sides of a 4½" C square as shown, RST. Press. Make four Units 5. Repeat with 2½ x 4½" B rectangles and a 4½" D square as shown. Make four Units 6.



**Step 5:** Sew 2½ x 8½" B rectangles to the top and bottom of a Unit 5 as shown, RST. Press. Make four Units 7.

Repeat with 2½ x 8½" B rectangles and a Unit 6 as shown. Make four Units 8.



**Step 6:** Arrange a marked Unit 1 on the top left corner of a Unit 7 as shown, RST. Make sure the C triangle is in the middle of the block. Sew along the marked line. Trim seam allowance to ¼". Press. Repeat on the upper right corner. In the same way, sew a Unit 2 to each bottom corner. Make two Blocks 4A.



**Step 7:** Repeat Step 6, with marked Units 1 on the bottom corners and Units 2 on the top corners of a Unit 7. Make two Blocks 4B.



**Step 8:** Repeat Step 6, with marked Units 3 on the top corners and the Units 4 on the bottom corners of a Unit eight as shown. Make four Blocks 4C.





# Dark Academia BOM - Month 5

## Block 5 Make 4 total (8" finished size)

### Fabric Guide



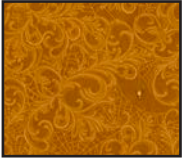
**Fabric C**  
W100-017-072  
1/8 yard



**Fabric G**  
W100-020-020  
Fat Eighth



**Fabric J**  
W100-021-677  
Fat Eighth



**Fabric K**  
W100-022-282  
Fat Eighth



**Fabric L**  
W100-022-670  
Fat Eighth



*Kindly note, our free patterns are not to be sold nor hosted on any other websites. We appreciate your understanding.*

All seam allowances are 1/4" unless otherwise stated.  
Press seams open unless otherwise stated.

WOF = Width of Fabric (selvage to selvage)  
RST = Right Sides Together

### Cutting Instructions

C	1 - 2½" x WOF strip cut into 16 - 2½" squares
G	1 - 2½" x WOF strip cut into 8 - 2½" squares 1 - 4½" x WOF strip cut into 4 - 4½" squares
J	1 - 4½" x WOF strip cut into 4 - 4½" squares
K	1 - 2½" x WOF strip cut into 8 - 2½" squares 1 - 4½" x WOF strip cut into 4 - 4½" squares
L	1 - 2½" x WOF strip cut into 8 - 2½" squares 1 - 4½" x WOF strip cut into 4 - 4½" squares

# Piecing Instructions

**Step 1:** Draw a diagonal line on the wrong side of all of the 2½" C squares.



**Step 2:** Arrange a marked 2½" C square on a corner of a 4½" G square as shown, RST. Sew along the marked line. Trim seam allowance to ¼". Press. Make four Units 1. Repeat with marked 2½" C square on 4½" J square as shown. Make four Units 2.



Unit 1

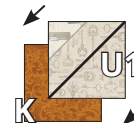


Unit 2

**Step 3:** Draw a diagonal line on the wrong side of all of the Units 1 and 2. Make sure the line is parallel to the C corner triangles as shown.



**Step 4:** Arrange a marked Unit 1 with a 4½" K square RST. Line up the corners. Sew along the marked line. Trim seam allowance to ¼". Press. Make four Units 3. Repeat with a marked Unit 2 with a 4½" L square. Make four Units 4.



Unit 3



Unit 4

**Step 5:** Lay out one each 2½" C, G, K, and L squares as shown. Sew together in rows and then sew the rows together. Press. Make four Units 5.



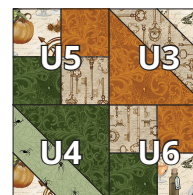
Unit 5

**Step 6:** Lay out one each 2½" C, G, K, and L squares as shown. Sew together in rows and then sew the rows together. Press. Make four Units 6.



Unit 6

**Step 7:** Lay out one each of the Units 3-6 as shown. Pay close attention to the direction of the units. Sew together in rows and then sew the rows together. Press. Make four Blocks 5.



Block 5

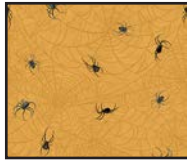
# Dark Academia BOM - Month 6

## Quilt Assembly (60" x 79" finished size)

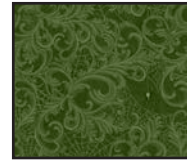
### Fabric Guide



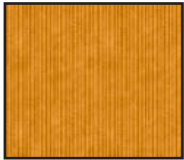
**Fabric A**  
W100-014-807  
2 $\frac{1}{3}$  yard



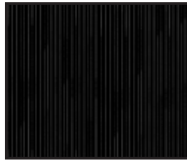
**Fabric I**  
W100-021-277  
 $\frac{5}{8}$  yard  
Binding



**Fabric L**  
W100-022-670  
 $\frac{5}{8}$  yard



**Fabric O**  
W100-023-275  
 $\frac{1}{3}$  yard



**Fabric P**  
W100-023-790  
 $\frac{1}{4}$  yard



**Backing**  
4 yards - 45" OR  
2 yards - 108"



Kindly note, our free patterns are not to be sold nor hosted on any other websites. We appreciate your understanding.

All seam allowances are  $\frac{1}{4}$ " unless otherwise stated.  
Press seams open unless otherwise stated.

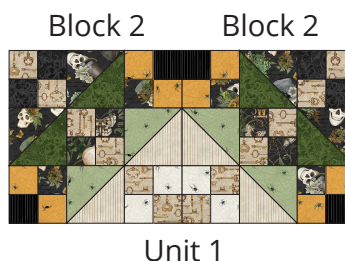
WOF = Width of Fabric (selvage to selvage)  
LOF = Length of Fabric  
RST = Right Sides Together

### Cutting Instructions

A	4 - 3 $\frac{1}{2}$ " x LOF light pumpkin strips cut into 4 - 3 $\frac{1}{2}$ " x 49" strips 4 - 5" x LOF dark skull strips, cut only 2 of the strips down to 5" x 64" strips
I	Binding 7 - 2 $\frac{1}{2}$ " x WOF strips
L	10 - 2" x WOF strips
O	5 - 2" x WOF strips
P	4 - 2" x WOF strips

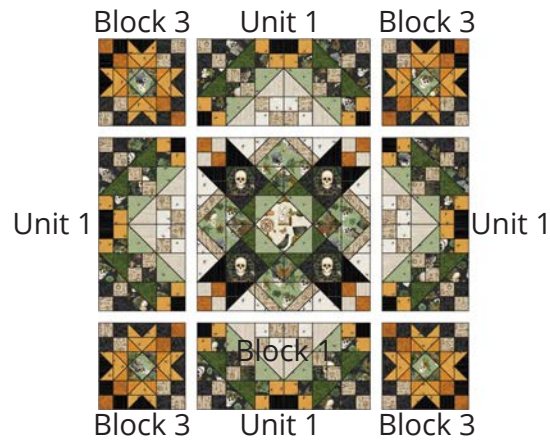
### Piecing Instructions

**Step 1:** Sew two Blocks 2 as shown, RST. Pay close attention to the direction of the blocks. Press. Make four Units 1.





**Step 2:** Lay out four each Blocks 3 and Units 1 with Block 1. Pay close attention to the direction of the blocks and units. Blocks 3 should have the black P stripes in the outside corners. Sew together in rows, then sew the rows together. Press as you sew. Make one Center Unit.

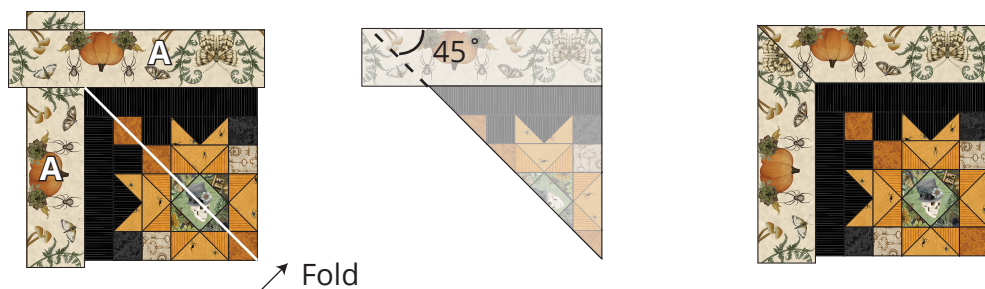


**Step 3:** Sew a 2" x 36" P strip to the left side of the Center Unit. Repeat for the right side of the Center Unit. Repeat for the top and bottom, either cutting the 2" x WOF P strips to 39" long or use the top of the quilt to measure and cut.



**Step 4:** Arrange a 3½" x 49" A light pumpkin border strip centered on a side of the Quilt, the pumpkin tops should be pointing toward the center of the quilt. Sew to the Quilt, but stop and backstitch ¼" from each corner, leaving the border ends free. Press, but do not trim yet. Repeat for each side of the Quilt.

After the borders are stitched on, fold the quilt on the diagonal, right sides together, aligning the raw edges of two adjacent borders. With a ruler, mark a 45 degree line from the point where the stitching stopped on the border to the raw edge of the border. Sew on the 45 degree line, backstitching at both ends. Before trimming to a ¼" seam allowance, check to make sure the corner is sewn correctly. Press. Repeat for each corner.

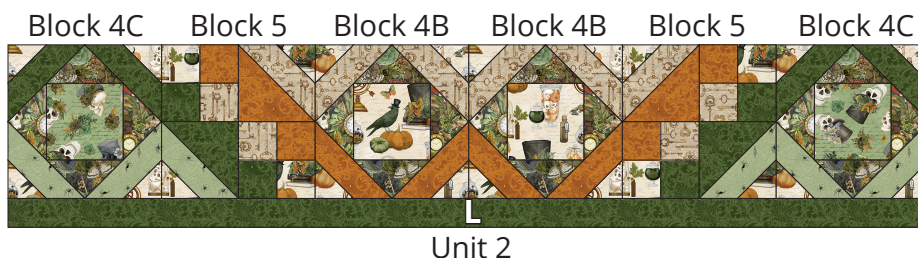


**Step 5:** Sew two 2" x WOF O strips short ends together. You can measure and cut to 45" long or use the left side of the quilt to measure and cut your border strip. Sew strip to the left side of the Quilt. Repeat for the right side of the Quilt, using the excess you cut off from the first strip sewn to a 2" x WOF O strip. Repeat for the top and bottom. Either cut the strips to 48" long or use the top of the quilt to measure and cut.



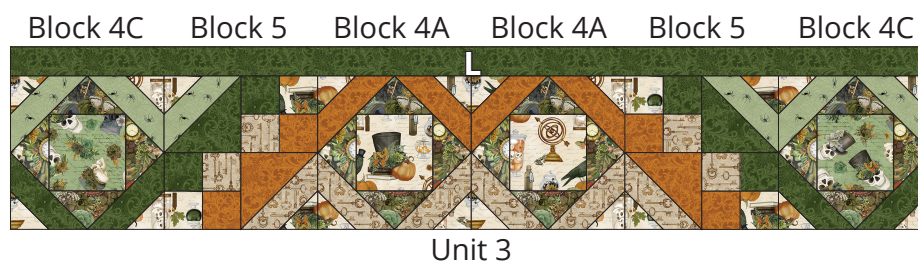
**Step 6:** Sew two each Blocks 4B, 4C and 5 together as shown. Pay close attention to the direction of the blocks. Press. Make one Unit 2.

Sew two 2" x WOF L strips short ends together. You can measure and cut to 48" long or use your Unit 2 to measure and cut your strip, keep the excess fabric. Sew to the strip to the bottom of the Unit 2.



**Step 7:** Sew two each Blocks 4A, 4C and 5 together as shown. Pay close attention to the direction of the blocks. Press. Make one Unit 3.

Sew a 2" x WOF L strip to the leftover strip from Step 6, short ends together. You can measure and cut to 48" long or use your Unit 3 to measure and cut your strip. Sew to the strip to the top of the Unit 3.



**Step 8:** Lay out the Quilt with the Unit 2 on the top and the Unit 3 on the bottom. The L border strips should be facing the Quilt center. Sew together, one Unit at a time. Press.



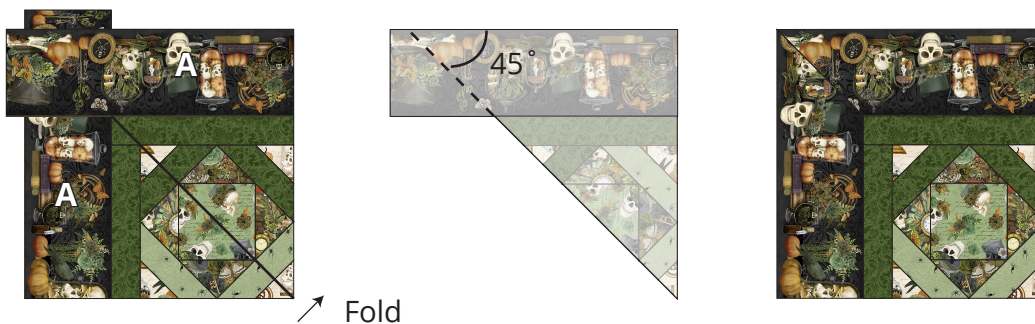


**Step 9:** Sew two 2" x WOF L strips short ends together. You can measure and cut to 67" long or use the left side of the quilt to measure and cut your border strip. Sew strip to the left side of the Quilt. Repeat for the right side of the Quilt. Repeat for the top and bottom. Either cut the strips to 51" long or use the top of the quilt to measure and cut. For the second strip, use the excess fabric from the first strip.



**Step 10:** Arrange a 5" x LOF" A dark skull border strip centered on a side of the Quilt, the skulls should be facing away from the center of the quilt. Sew to the Quilt, but stop and backstitch  $\frac{1}{4}$ " from each corner, leaving the border ends free. Press, but do not trim yet. Repeat for the opposite side of the Quilt. In the same way, sew a 5" x 64" A dark skull border strip centered on a top and bottom of the Quilt, the skulls should be facing away from the center of the quilt.

After the borders are stitched on, fold the quilt on the diagonal, right sides together, aligning the raw edges of two adjacent borders. With a ruler, mark a 45 degree line from the point where the stitching stopped on the border to the raw edge of the border. Sew on the 45 degree line, backstitching at both ends. Before trimming to a  $\frac{1}{4}$ " seam allowance, check to make sure the corner is sewn correctly. Press. Repeat for each corner.



**Step 11:** Piece the backing at least 6" larger than the quilt top. Layer the backing wrong side up, the batting and the quilt top. Baste together. Quilt. Before binding, hand baste a scant  $\frac{1}{4}$ " around the edge of the quilt to hold the layers together. Piece the binding strips together. Fold the binding in half wrong sides together and press to make a double binding. Sew the binding to the quilt with a  $\frac{1}{4}$ ", mitering the corners. Trim excess backing and batting and fold the binding over the back side and stitch down by hand with matching thread.



# Dark Academia

60 x 79"

