

Glimmer

by Elise Lea for White Owl Textiles

Finished size: 58" x 66"

Tranquil Blooms



Fabric Guide: Page 5

Poinsettia Radiance



Fabric Guide: Page 5



White Owl
TEXTILES

Fabric Guide



Fabric A
¼ yard



Fabric B
¼ yard



Fabric C
¼ yard



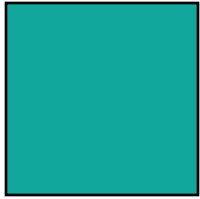
Fabric D
¼ yard



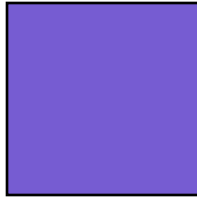
Fabric E
1 yard



Fabric F
2⅞ yards



Fabric G
⅞ yard



Binding
⅝ yard



Backing
3¾ yards

Kindly note, our free patterns are not to be sold nor hosted on any other websites. We appreciate your understanding.

All seam allowances are ¼" unless otherwise stated.
Press seams open unless otherwise stated.

WOF = Width of Fabric (selvage to selvage)
RST = Right Sides Together

Cutting Instructions

Fabrics A-D	Cut three 2½" x WOF strips for strip piecing
Fabric E	Cut six strips 5" x WOF - subcut forty-two 5" x 5" squares
Fabric F	Cut twelve 2½" x WOF strips for strip piecing Cut six strips 5" x WOF - subcut forty-two 5" x 5" squares Cut six strips 1½" x WOF for inner border - sew strips together end-to-end to create one long strip. Subcut 2 strips 1½" x 56½" for side inner borders and 2 strips 1½" x 50½" for top and bottom inner borders.
Fabric G	Cut six strips 4½" x WOF for outer border - sew strips together end-to-end to create one long strip. Subcut 4 strips 4½" x 58½" for outer borders.
Binding	Cut seven 2½" x WOF strips

Piecing Instructions

Step 1: Sew a Fabric A $2\frac{1}{2}$ " x WOF strip to a Fabric F $2\frac{1}{2}$ " x WOF strip along the long edge. Press seams open or towards the darker fabric.

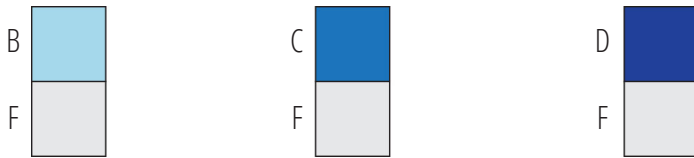


Repeat to make 3 AF strip sets.

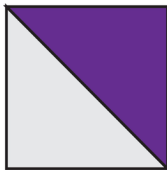
Step 2: Cut the strip sets into a total of forty-two $2\frac{1}{2}$ " x $4\frac{1}{2}$ " strips.



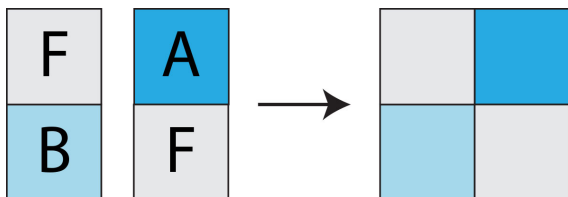
Step 3: Repeat Steps 1 & 2 to make forty-two $2\frac{1}{2}$ " x $4\frac{1}{2}$ " strips of the following combinations:



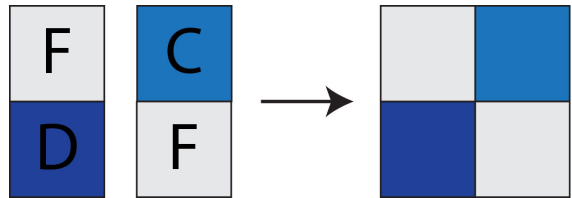
Step 4: Draw a line across the back of all the 5" x 5" Fabric F squares. Lay a 5" x 5" Fabric F square and a 5" x 5" Fabric E square RST. Sew a $\frac{1}{4}$ " away from both sides of the line. Cut apart on the line. Open and press. Trim both half square triangles (HSTs) to $4\frac{1}{2}$ " x $4\frac{1}{2}$ ". Repeat to make a total of 84 EF HSTs.



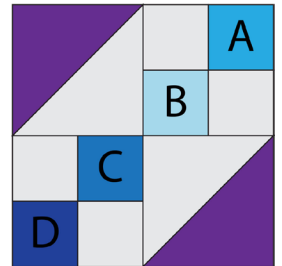
Step 5: Sew an AF $2\frac{1}{2}$ " x $4\frac{1}{2}$ " strip and a BF $2\frac{1}{2}$ " x $4\frac{1}{2}$ " strip together as shown, noting orientation of strips. Press. Repeat to make 42 AFBF Blocks.



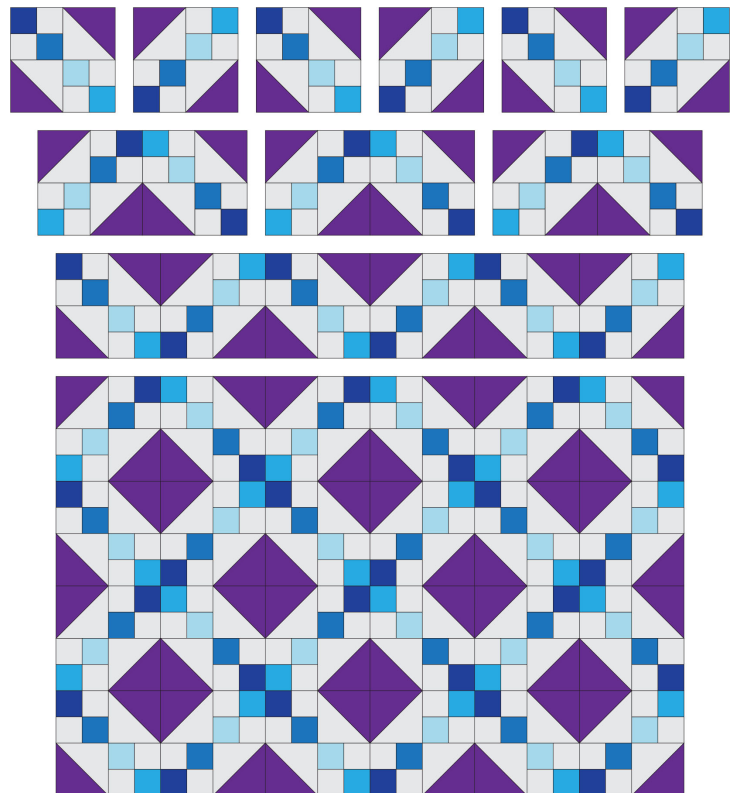
Step 6: Sew an CF $2\frac{1}{2}$ " x $4\frac{1}{2}$ " strip and a DF $2\frac{1}{2}$ " x $4\frac{1}{2}$ " strip together as shown, noting orientation of strips. Press. Repeat to make 42 CFDF Blocks.



Step 7: Gather the following blocks: 2 EF HSTs, 1 AFBF block and 1 CFDF block. Sew the blocks together as shown, noting orientation of blocks. Press. Repeat to make 42 Blocks.



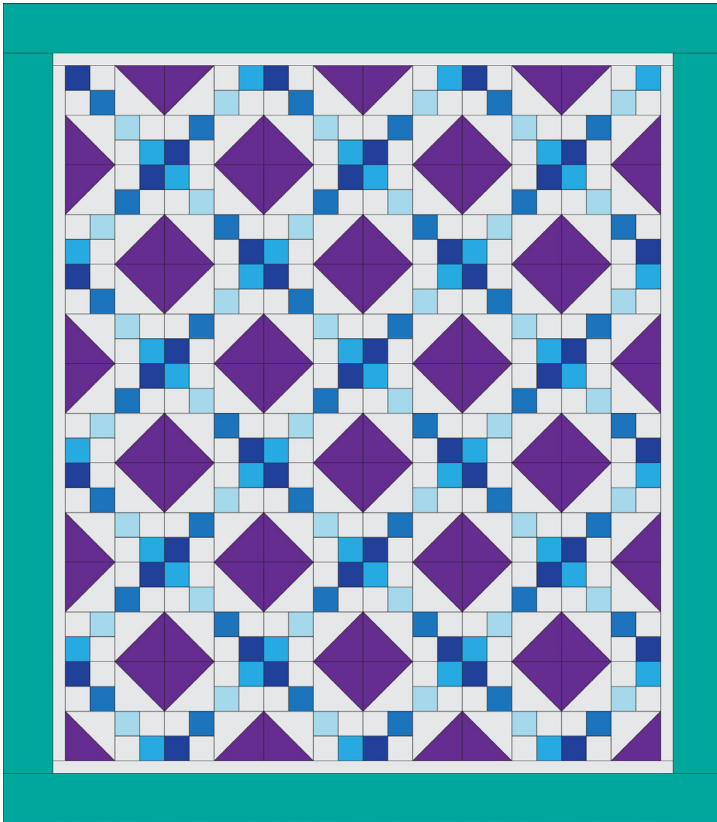
Step 8: Lay the blocks from Step 7 out in a 6x7 grid as shown, noting orientation of blocks. Sew the blocks into rows, press. Sew the rows together, press.



Piecing Instructions

Step 9: Sew the side inner borders to the sides of the quilt top. Press. Sew the top and bottom inner borders to the top and bottom of the quilt top. Press.

Step 10: Sew the side outer borders to the sides of the quilt top. Press. Sew the top and bottom outer borders to the top and bottom of the quilt top. Press.

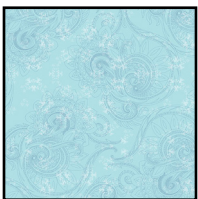


Woohoo! Your quilt top is finished. Now, quilt and bind using your preferred method.

Tranquil Blooms



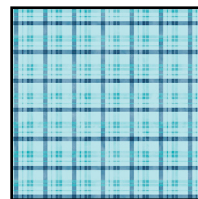
Fabric Guide



Fabric A
W150-009-517
¼ yard



Fabric B
W150-006-505
¼ yard



Fabric C
W150-011-555
¼ yard



Fabric D
W150-008-527
¼ yard



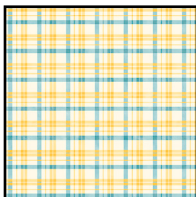
Fabric E
W150-003-800
1 yard



Fabric F
W150-009-210
2⅞ yards



Fabric G
W150-004-515
⅞ yard



Binding
W150-011-025
⅝ yard



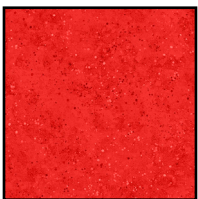
Backing
W150-004-515*
3¾ yards

*Also used as Fabric G

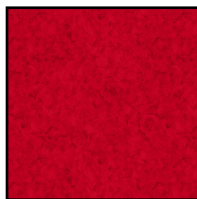
Tranquil Blooms



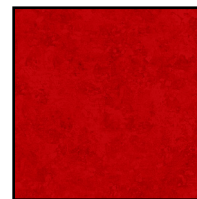
Fabric Guide



Fabric A
W110-012-355
¼ yard



Fabric B
W110-001-360
¼ yard



Fabric C
W110-013-360
¼ yard



Fabric D
W110-001-380
¼ yard



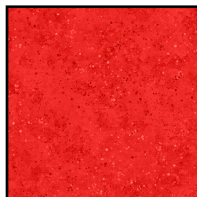
Fabric E
W110-006-306
1 yard



Fabric F
W110-013-025
2½ yards



Fabric G
W110-007-330
⅞ yard



Binding
W110-012-355*
⅝ yard



Backing
W110-007-030
3¾ yards

*Also used as Fabric A