

Stacked Tree Skirt

by Elise Lea for White Owl Textiles

Finished Size: 60" x 60"



Merry & Bright - Page 5



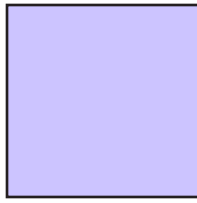
Snowy Greetings - Page 5



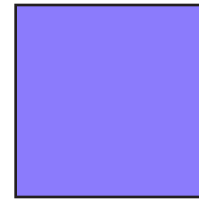
Fabric Guide



Fabric A
1 Stack Pack
or
(42 - 10" squares)



Fabric B
1 3/8 yards



Binding
1 yard



Backing
3 7/8 yards

Kindly note, our free patterns are not to be sold nor hosted on any other websites. We appreciate your understanding.

All seam allowances are 1/4" unless otherwise stated.
Press seams open unless otherwise stated

WOF = Width of Fabric (selvage to selvage)
RST = Right Sides Together

Cutting Instructions

| | |
|----------|--|
| Fabric A | Cut each square into two 5" x 9 1/2" strips - choose 11 strips and cut them into 2 rectangles 5" x 4.5" |
| Fabric B | Cut 9 strips 1 1/2" x WOF - Subcut 66 strips 1 1/2" x 5" Cut 22 strips 1 1/2" x WOF - trim each strip to 1 1/2" x 34 1/2" |
| Binding | Cut a 2 1/2" wide bias strips and sew them together until you have approximately 300" of binding |

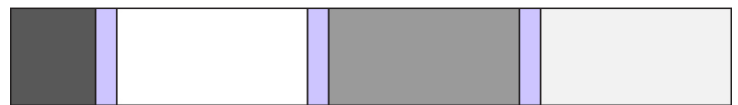
Piecing Instructions

In the following steps, mix and match your Fabric A strips to create a look that is pleasing to you, or follow one of the images on the color story pages at the end.

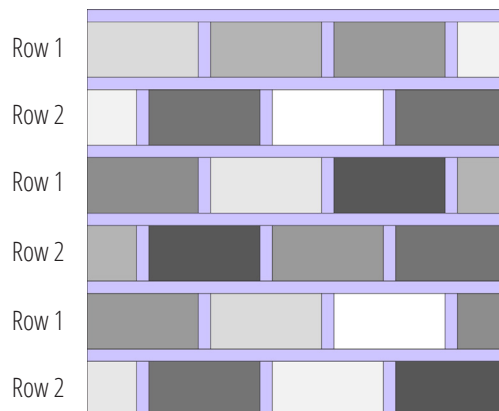
Step 1: Gather one 5" x 4 1/2" Fabric A Rectangle, three Fabric A 5" x 9 1/2" strips and three Fabric B 1 1/2" x 5" strips. Sew them together as shown below to make Row 1. Press. Repeat to make 10 Rows.



Step 2: Gather one 5" x 4 1/2" Fabric A Rectangle, three Fabric A 5" x 9 1/2" strips and three Fabric B 1 1/2" x 5" strips. Sew them together as shown to make Row 2. Press. Repeat to make 12 rows.

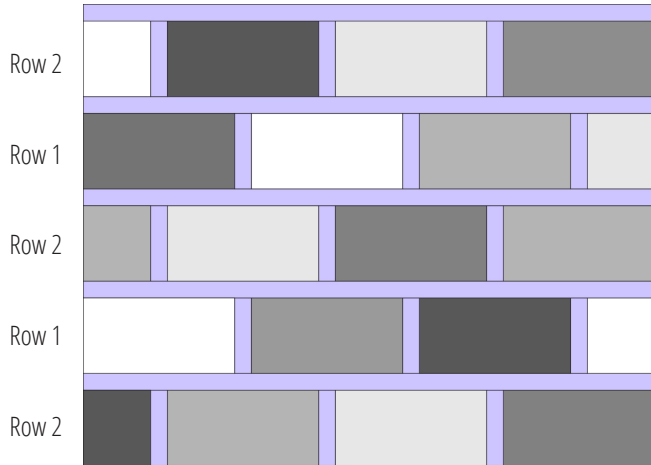


Step 3: Gather 3 Row A, 3 Row B and 6 Fabric B 1 1/2" x 34 1/2" strips. Sew them together with a Fabric B strip between each row as shown below to make Section 1. Press. Repeat to make one more Section 1.

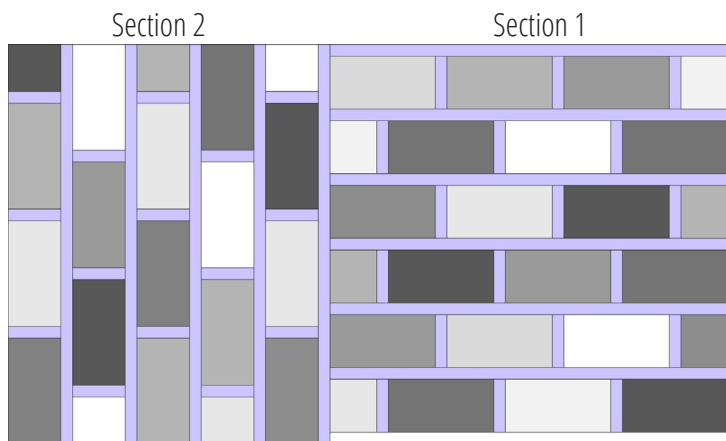


Piecing Instructions

Step 4: Gather 3 Row A, 3 Row B and 6 Fabric B $1\frac{1}{2}$ " x $34\frac{1}{2}$ " strips. Sew them together with a Fabric B strip between each row as shown below to make Section 1. Press. Repeat to make one more Section 2.

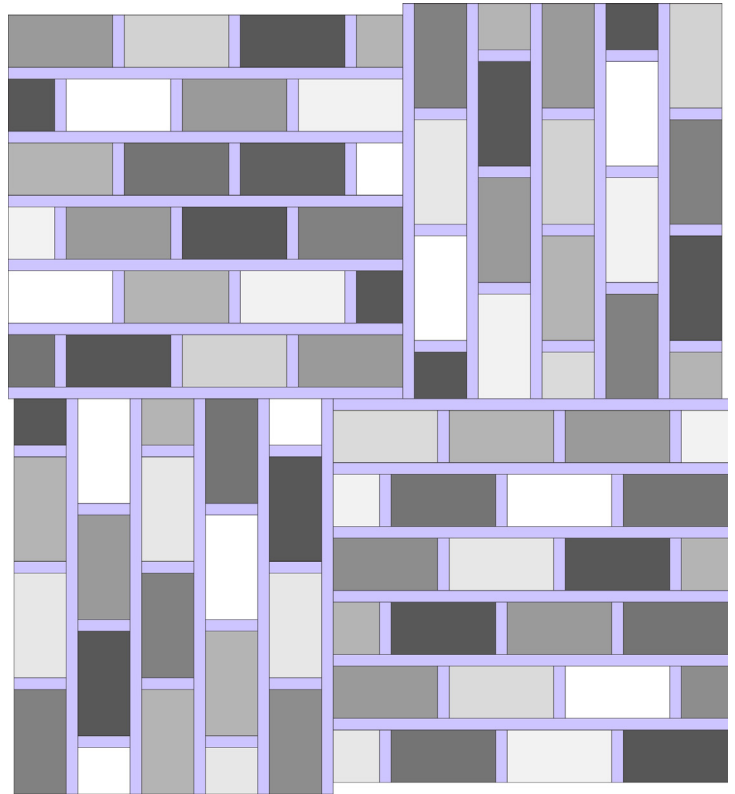


Step 5: Sew a Section 1 and Section 2 together as shown to create a Section 3 piece. Press. Note the orientation of the sections and where the Fabric B strips are placed, section 2 is rotated 90° clockwise and extends beyond Section 1.



Repeat with remaining Section 1 and Section 2 pieces to make a second Section 3.

Step 6: Sew the two Section 3 pieces together as shown. Noting that the top one is turned 180° and that the quilt top is not square. Press.

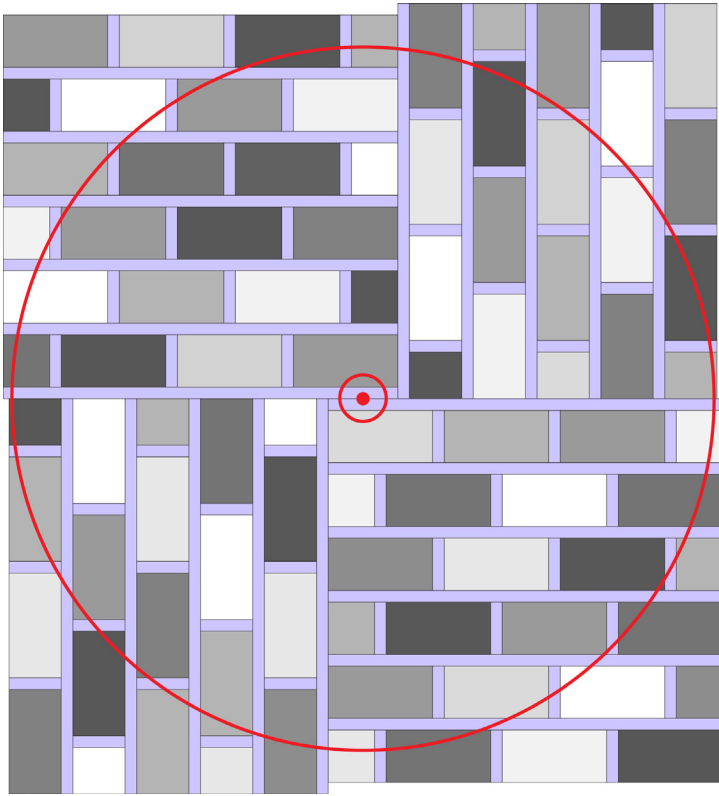


Step 7: Layer your tree skirt top, batting, and backing. Baste and quilt your tree skirt as desired.

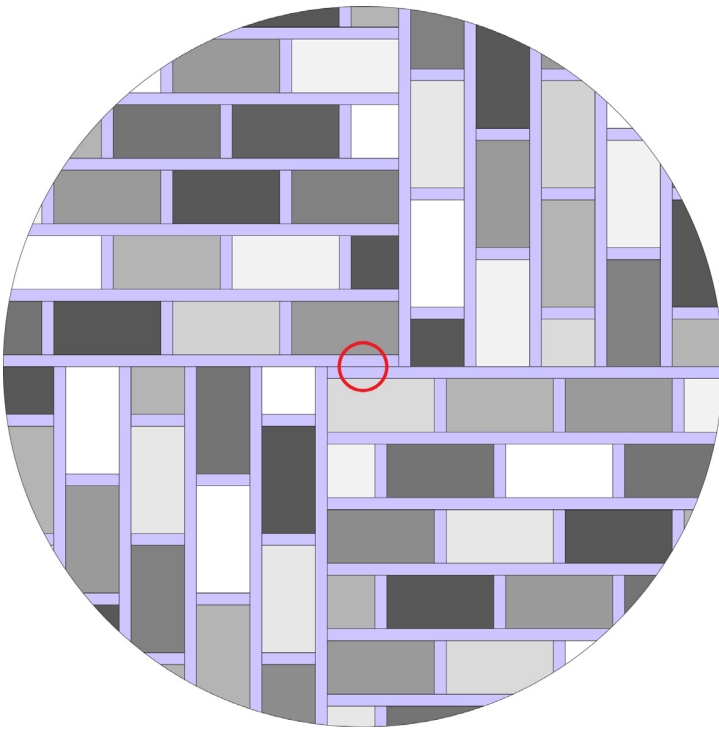
Step 8: Find the center point of your tree skirt quilt top. It should be approximately where the red dot is shown below. Measure out 30" from the center and make a mark. Continue to do this all the way around the quilt top until there are enough dots to connect to make a large circle (if your quilt top is not quite 60" wide, feel free to make the marks a little closer to the center like 29" or 28" just keep the number consistent - the tree skirt will still be plenty big!)

Repeat this process but this time measure out 2" from the center and mark a circle all the way around - if you are planning to use the tree skirt on a real tree, you may wish to increase that to 3" from the center to accommodate a larger trunk.

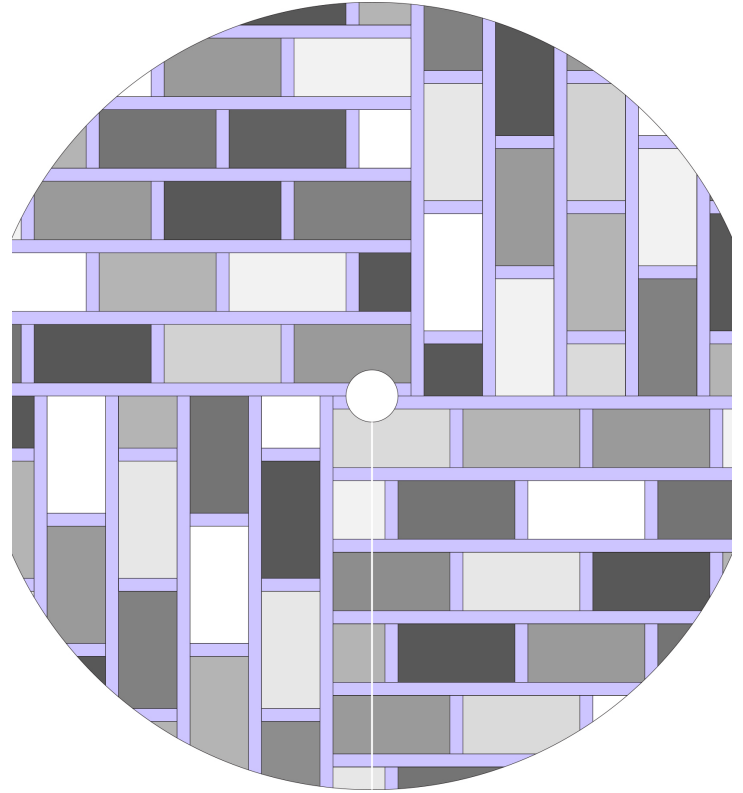
Piecing Instructions Cont.



Once both circles are marked, cut out the tree skirt out on the marked line, leaving the center uncut for now.



Step 9: Mark one line from the outer circle to the inner circle, cut up the line and around the inner circle as well.



Woohoo! Your quilt top is finished. Now, bind with bias binding in your preferred method.

French Press Fabric Guide



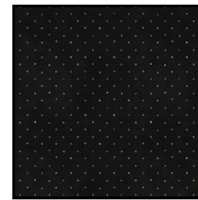
Fabric Guide



Fabric A
French Press-05
1 Stack Pack



Fabric B
W135-020-793
1 3/8 yards



Binding
W135-020-793
1 yard



Backing
W130-019-663
3 7/8 yards

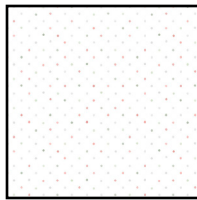
Oceanside Fabric Guide



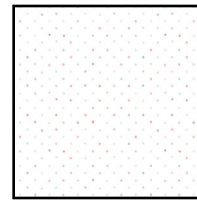
Fabric Guide



Fabric A
Snowy Greetings-10
1 Stack Pack



Fabric B
W135-020-700
1 3/8 yards



Binding
W135-020-700
1 yard



Backing
W105-035-563
3 7/8 yards