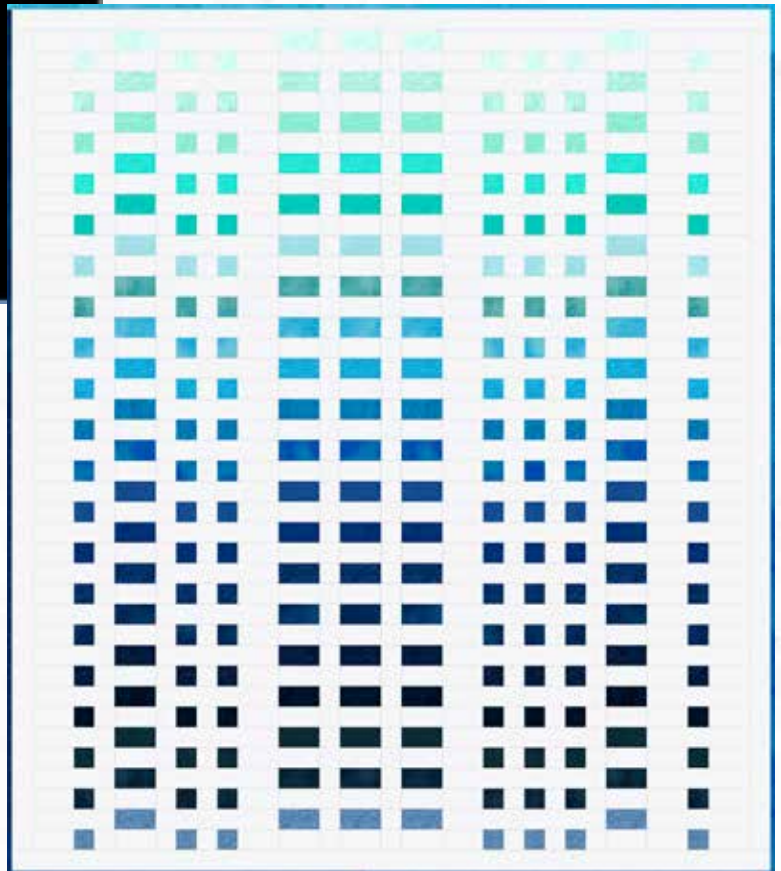
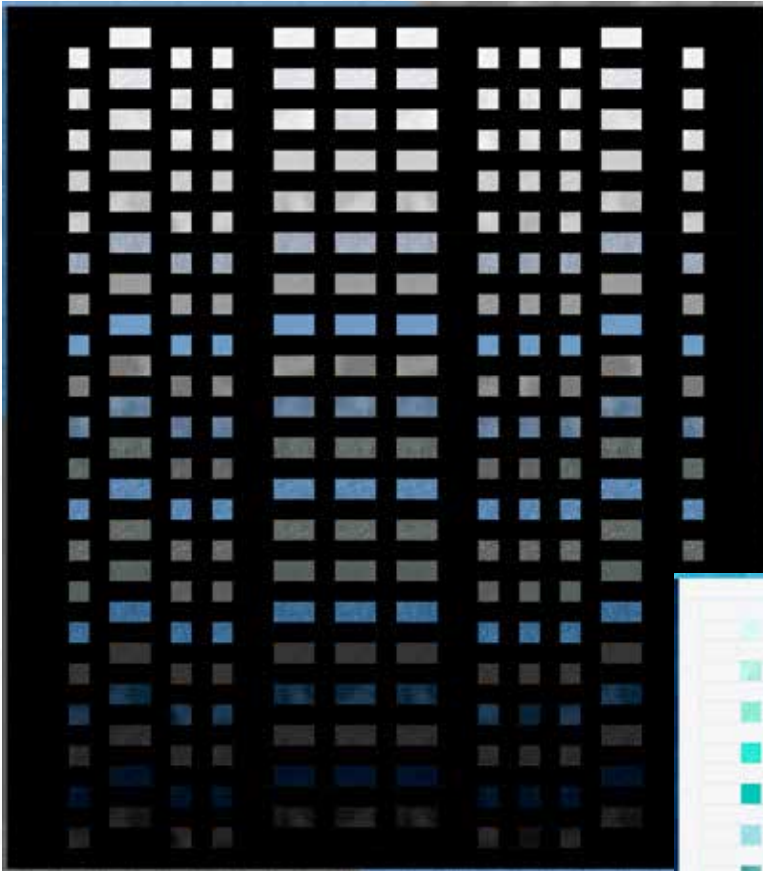


# Love in Morse Code

by Heather Seth for White Owl Textiles

Finished Size: 70" x 80"



## Fabric Guide



**Fabric A**  
1 Strip Pack  
or  
(28 - 2½" strips)



**Fabric B**  
2 Strip Packs  
or  
4¼ yds



**Binding\***  
Included in Fabrics  
A or B  
or  
⅝ yard



**Backing**  
2⅔ yards

\*Use Fabric A for a scrappy binding. If a solid binding is desired, use the leftover Fabric B strips or an additional ⅝ yard is required

*Kindly note, our free patterns are not to be sold nor hosted on any other websites. We appreciate your understanding.*

All seam allowances are ¼" unless otherwise stated.  
Press seams open unless otherwise stated

WOF = Width of Fabric (selvage to selvage)  
RST = Right Sides Together

## Cutting Instructions

Fabric A	Select 20 strips for the block rows in the quilt: <ul style="list-style-type: none"> <li>• from each strip cut 5 strips 2½" x 4½" and 7 squares 2½" x 2½" - Keep each strip's pieces together as the 4½" pieces will be used in Step 1 and the 2½" pieces in step 2</li> </ul>
Fabric B	Gather 60 of the strips <ul style="list-style-type: none"> <li>• cut 20 of the strips into 1 piece 2½" x 24½" and 1 piece 2½" x 16½"</li> <li>• cut 20 of the strips into 2 pieces 2½" x 10½" and 2 pieces 2½" x 8½"</li> <li>• cut 20 of the strips into 1 piece 2½" x 12½", 2 pieces 2½" x 4½" and 5 pieces 2½" x 2½"</li> </ul> <p><i>If using yardage instead of two strip packs cut 60 strips 2½" x WOF and then follow the instructions above.</i></p>
Binding	Scrappy Binding - Select 8 leftover strips from Fabric A Background Binding - Select 8 leftover strips from Fabric B <i>if using Strip Packs</i> Accent Binding - Cut 8 strips 2½" x WOF

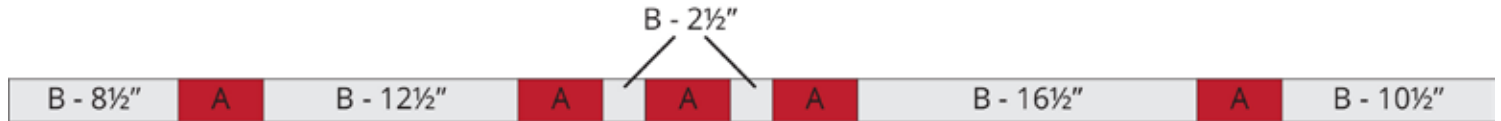
## Piecing Instructions

**Step 1:** To Make a Row A, gather the following pieces making sure that all the fabric A pieces are the same print:

- 5 Fabric A strips 2½" x 4½"
- 2 Fabric B squares 2½" x 2½"
- 1 Fabric B strip 2½" x 8½"
- 1 Fabric B strip 2½" x 10½"
- 1 Fabric B strip 2½" x 12½"
- 1 Fabric B strip 2½" x 16½"

# Piecing Instructions

Sew pieces together following the diagram on the following page. Press. Repeat to make 20 Row A.



**Step 2:** To make a Row B gather the following pieces making sure that all the fabric A pieces are all the same print, and the matching print to the previous step:

- 7 Fabric A squares  $2\frac{1}{2}'' \times 2\frac{1}{2}''$
- 3 Fabric B squares  $2\frac{1}{2}'' \times 2\frac{1}{2}''$
- 2 Fabric B strips  $2\frac{1}{2}'' \times 4\frac{1}{2}''$
- 1 Fabric B strip  $2\frac{1}{2}'' \times 8\frac{1}{2}''$
- 1 Fabric B strip  $2\frac{1}{2}'' \times 10\frac{1}{2}''$
- 1 Fabric B strip  $2\frac{1}{2}'' \times 24\frac{1}{2}''$

Sew them together following the diagram Below. Press. Repeat to make a total of 20 Row B



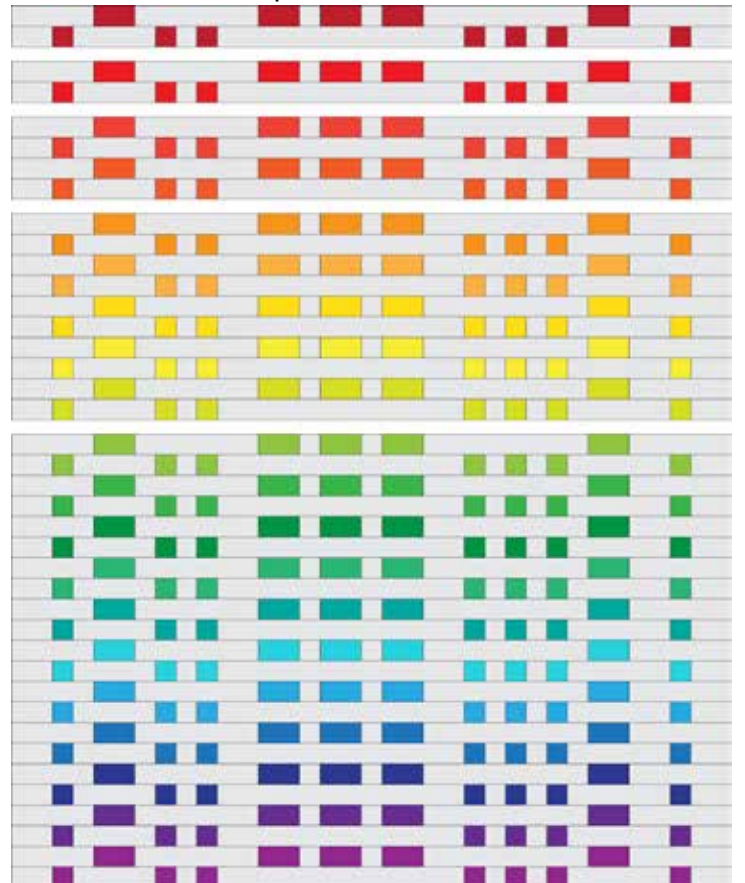
**Step 3:** To make an AB Row Sew a Row A from Step 1 and a Row B from Step 2 together, as shown. Press.



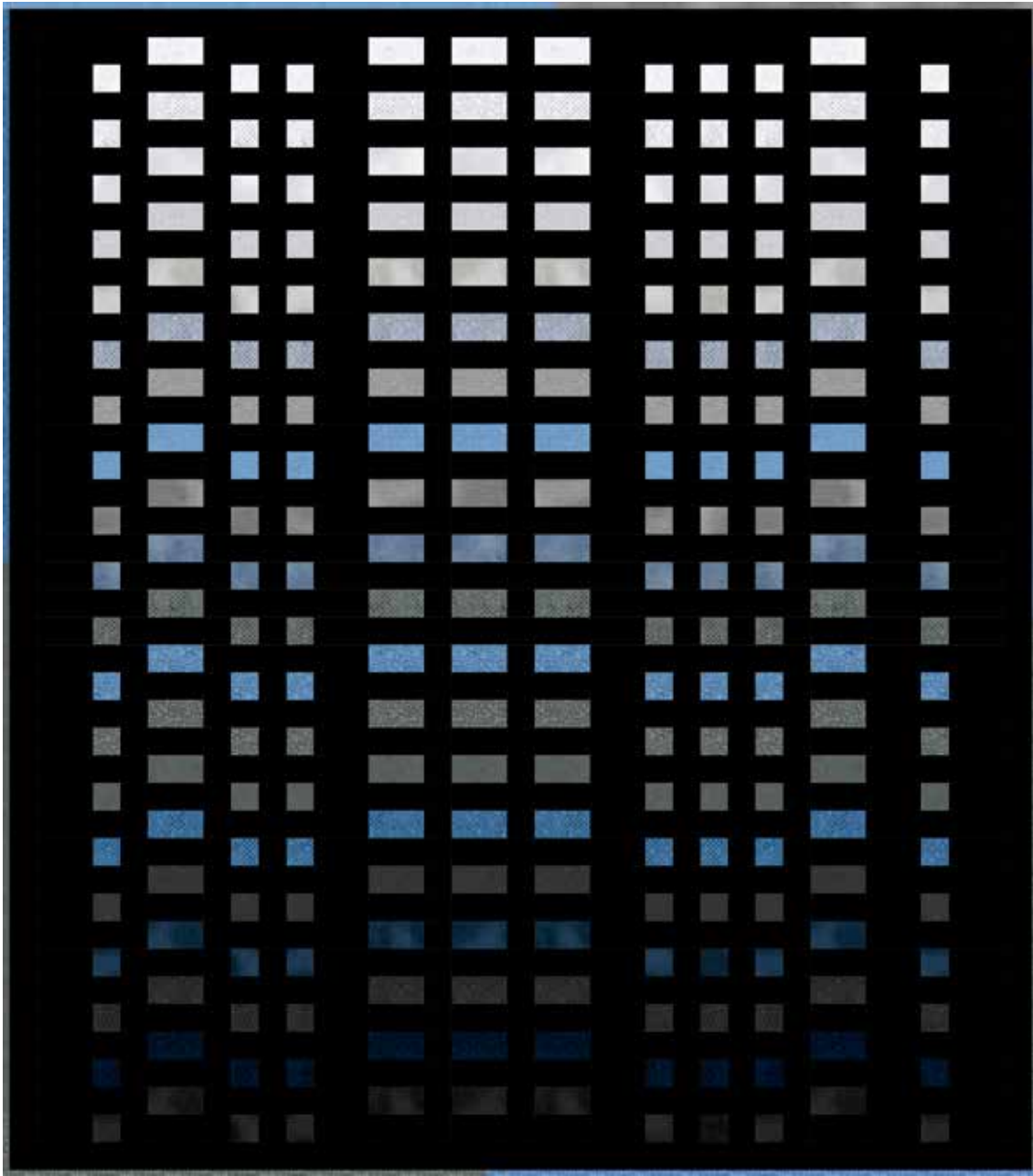
**Step 4:** Repeat Steps 1 and 2, making sure to keep the same Fabric A prints in the 2 rows. You will have a total of 20 AB Rows.

**Step 5:** Lay out all your rows, either following the diagrams on the fabric guide pages, or doing your own. Sew rows together. Press.

**Woohoo!** Your quilt top is finished. Now, quilt and bind using your preferred method.



# Nickel Plated Fabric Guide



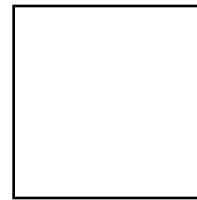
## Fabric Guide



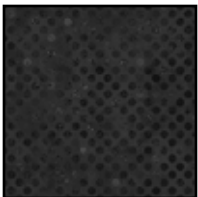
**Fabric A**  
Nickel Plated-2.5  
1 Strip Pack



**Fabric B**  
EC-Blackout-SP  
2 Strip Packs

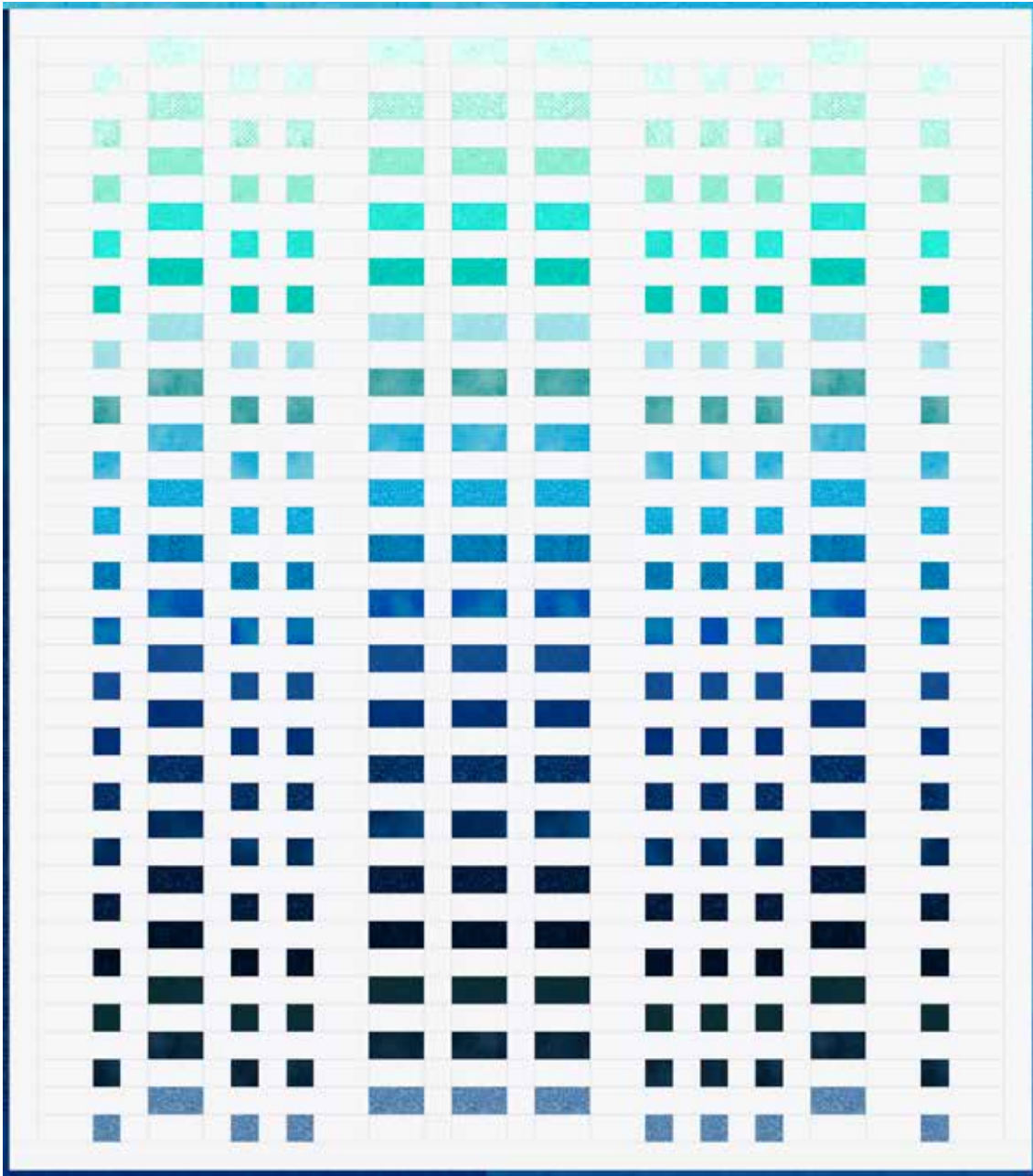


**Binding**  
Shown as leftovers  
from Fabric A



**Backing**  
W165-001-785  
4 $\frac{5}{8}$  yards

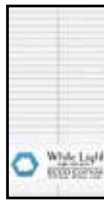
# Oceanside Fabric Guide



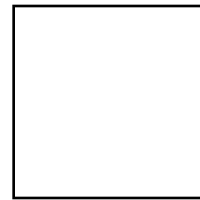
## Fabric Guide



**Fabric A**  
Oceanside-2.5  
1 Strip Pack



**Fabric B**  
EC-White Light-SP  
2 Strip Packs



**Binding**  
Shown as leftovers  
from Fabric A



**Backing**  
W110-002-575  
4 5/8 yards