

Candy Bars

by Elise Lea for White Owl Textiles
Finished size: 61" x 71"



Sheer Delight - Page 3



Growing in Color - Page 4

Fabric Guide



Blocks
1 Stack
(42 - 10" squares)



Sashing
2 $\frac{1}{8}$ yards



Binding
 $\frac{1}{2}$ yard



Backing
3 $\frac{7}{8}$ yards

Kindly note, our free patterns are not to be sold nor hosted on any other websites. We appreciate your understanding.

All seam allowances are $\frac{1}{4}$ " unless otherwise stated.
Press seams open unless otherwise stated.

WOF = Width of Fabric (selvage to selvage)

Cutting Instructions

Blocks	From each 10" square cut 4 strips 2 $\frac{1}{4}$ " x 9 $\frac{1}{2}$ "
Sashing	Cut 36 strips 1 $\frac{1}{2}$ " x WOF - from 20 of the strips cut 77 strips 1 $\frac{1}{2}$ " x 9 $\frac{1}{2}$ " set remaining 16 strips aside for row sashing and borders Cut 21 strips 1" x WOF - subcut 84 pieces 1" x 9 $\frac{1}{2}$ "
Binding	Cut 7 strips 2 $\frac{1}{2}$ " x WOF

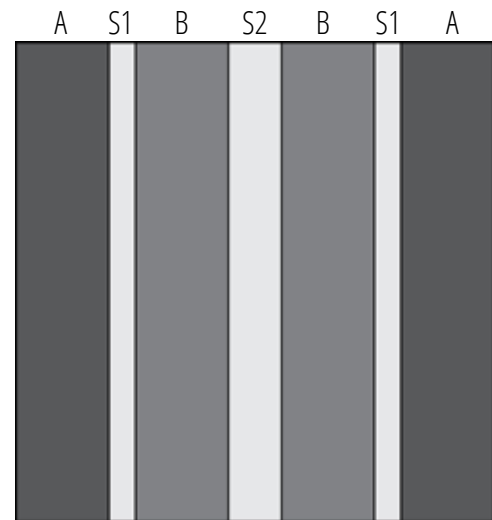
Piecing Instructions

Step 1: To make one block, gather 2 different sets of matching 2 $\frac{1}{4}$ x 9 $\frac{1}{2}$ " block strips, two 1" x 9 $\frac{1}{2}$ " sashing strips, and one 1 $\frac{1}{2}$ " x 9 $\frac{1}{2}$ " sashing strip. *Mix and match the 2 sets of strips for each block - either following the blocks in the quilt image of your choosing or picking your own.*

Sew them together in the following order:

- A - 2 $\frac{1}{4}$ x 9 $\frac{1}{2}$ " block strip
- S1 - 1" x 9 $\frac{1}{2}$ " sashing strip
- B - 2 $\frac{1}{4}$ x 9 $\frac{1}{2}$ " block strip
- S2 - 1 $\frac{1}{2}$ " x 9 $\frac{1}{2}$ " sashing strip
- B - 2 $\frac{1}{4}$ x 9 $\frac{1}{2}$ " block strip
- S1 - 1" x 9 $\frac{1}{2}$ " sashing strip
- A - 2 $\frac{1}{4}$ x 9 $\frac{1}{2}$ " block strip

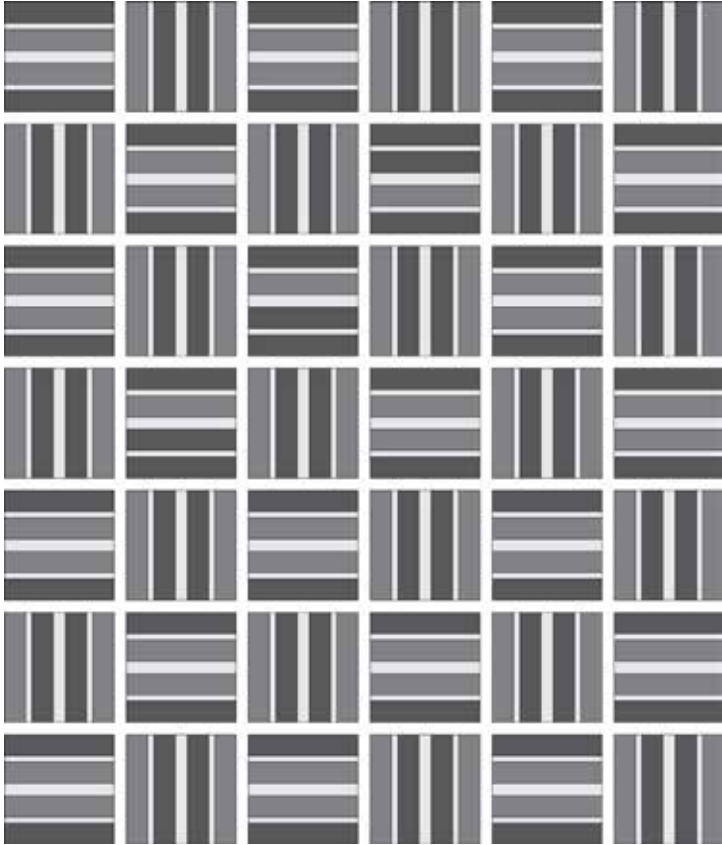
Note: the two A strips and the two B strips should match.



Press. Repeat to make a total of 42 blocks.

Assembly Instructions

Step 2: Lay the blocks out an aesthetically pleasing arrangement in a 6x7 grid, alternating the direction of the blocks as shown below. *Either follow the quilt image on the subsequent pages or choosing your own.*



Step 3: Sew three 1½" x WOF sashing strips together end-to-end to create one long strip. From the resulting strip cut two 1½" x 59½" sashing rows. Repeat with 6 more 1½" x WOF sashing strips for a total of 6 sashing rows.

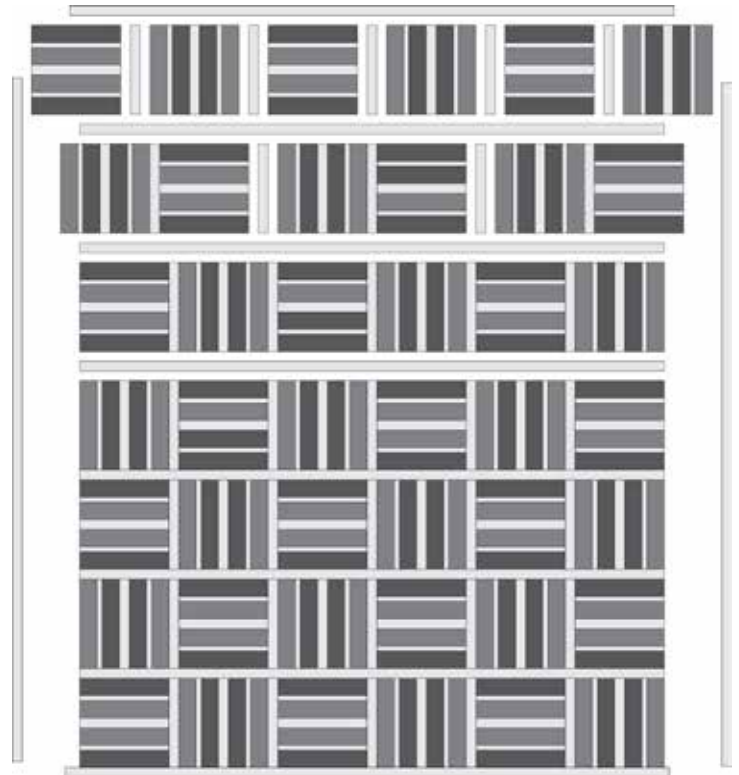
Step 4: Sew three 1½" x WOF sashing strips together end-to-end to create one long strip. From the resulting strip cut two 1½" x 61½" top and bottom outer borders.

Step 5: Sew two 1½" x WOF sashing strips together end-to-end to create one long strip. Trim the resulting strip to 1½" x 69½" for a side outer border. Repeat to make a second side outer border.

Step 6: Sew blocks into rows, placing a 1½" x 9½" sashing strip between blocks. Press.

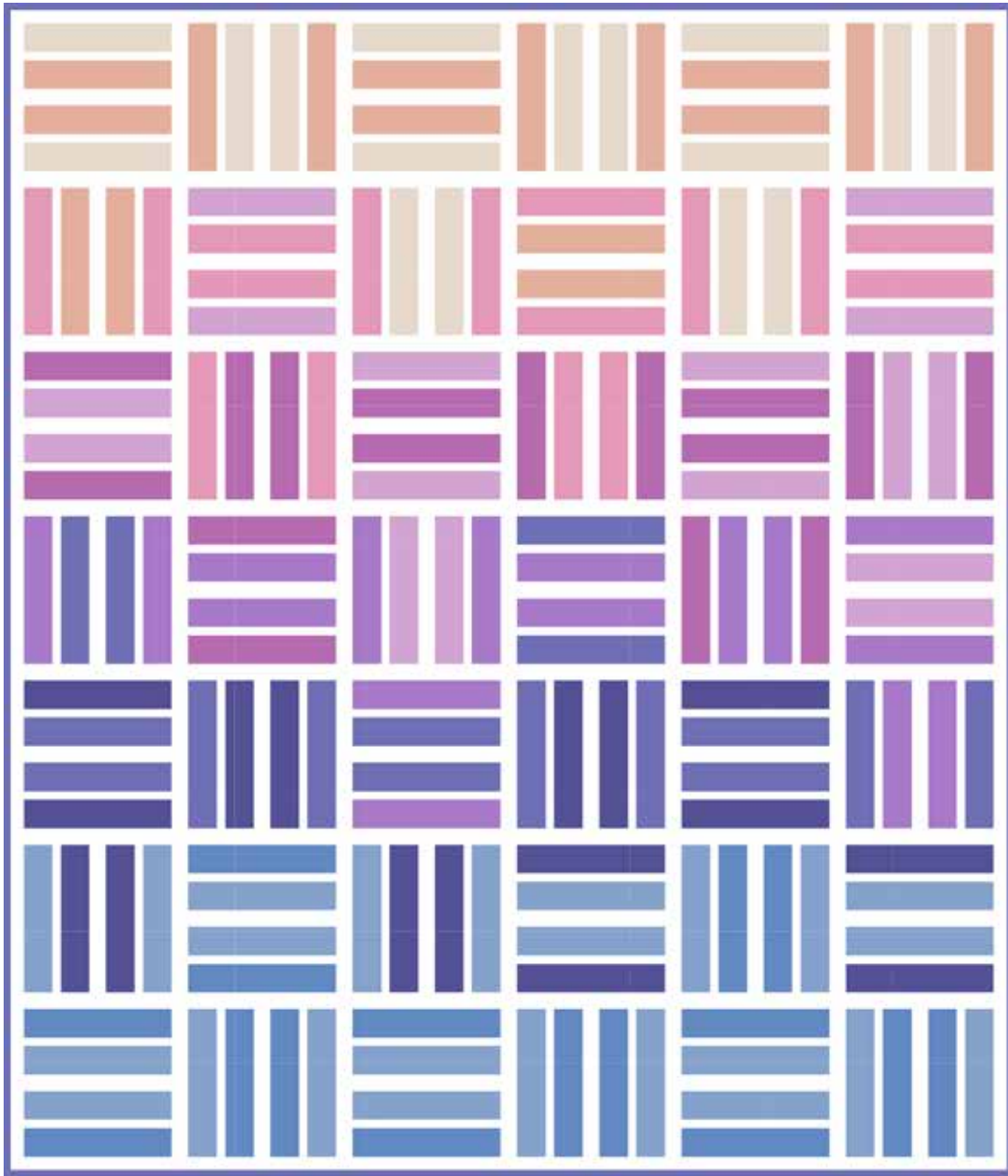
Sew block rows together placing a 1½" x 59½" sashing rows between each block row. Press

Sew the 1½" x 69½" side borders to the quilt top. Press. Sew the 1½" x 61½" top and bottom borders to the quilt top. Press



Woohoo! Your quilt top is now finished. Now, quilt and bind it using your preferred method. (We love 2½" double fold binding!)

ECCO Cotton: Sheer Delight



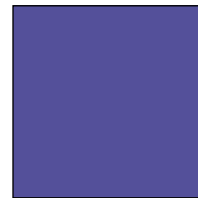
Fabric Guide



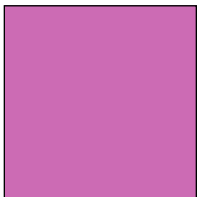
Blocks
EC-Sheer De-
light-ST
1 Stack



Sashing
EC-700
2¼ yards



Binding
EC-440
½ yard



**Suggested
Backing**
EC-140
3⅞ yards



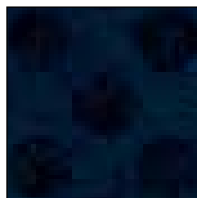
Growing in Color



Fabric Guide



Blocks
Growing in Color-10
1 Stack



Sashing
W165-001-585
2 1/4 yards



Binding
W175-008-545
1/2 yard



Suggested Backing
W175-004-553
3 3/8 yards

