

Framework Tote

by Heather Seth & Elise Lea for White Owl Textiles

Finished size: 13" x 6" x 20"



Amalfi Coast - Page 7



Patchwork Picnic - Page 8

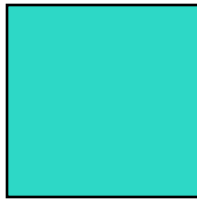


Wild Garden - Page 9

Fabric Guide



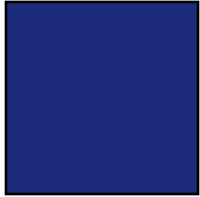
Front
1 yard



Lining
1 yard



Ties
½ yard



Pocket
Fat Quarter

Additional Supplies:
one 1" rectangle ring
one 1" slider buckle
chalk or other marking tool

Kindly note, our free patterns are not to be sold nor hosted on any other websites. We appreciate your understanding.

All seam allowances are ¼" unless otherwise stated.
Press seams open unless otherwise stated.
WOF = Width of Fabric (selvage to selvage)

RST = Right Sides Together
WST = Wrong Sides Together

Cutting Instructions

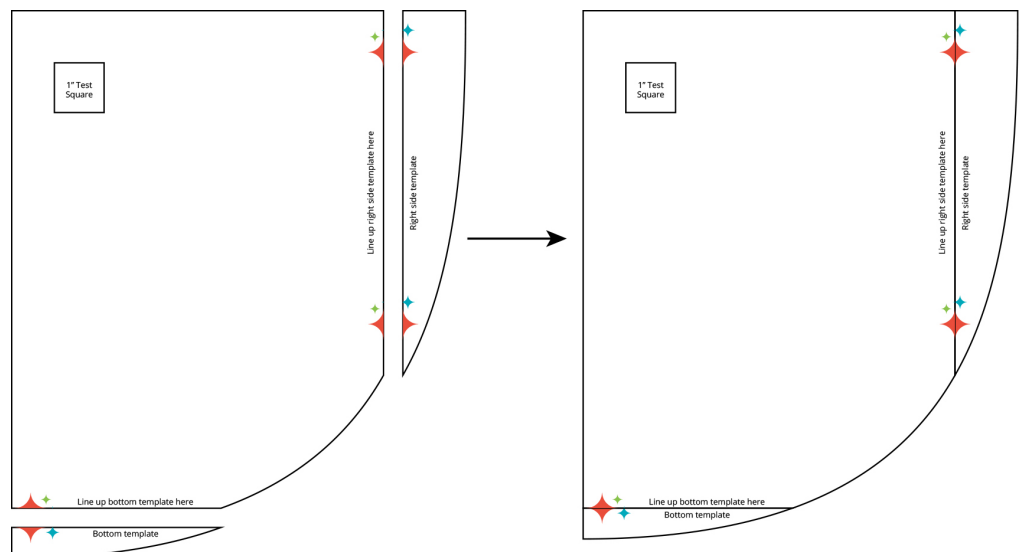
Front	Cut 1 strip 31½" x WOF - cut one Rectangle 29" x 32" for Apron Front <i>(If design runs parallel to selvage cut strip 29" X WOF - cut 1 rectangle 29" x 32")</i>
Lining	Cut 1 strip 31½" x WOF - cut one Rectangle 29" x 32" for Apron Front <i>(If design runs parallel to selvage cut strip 29" X WOF - cut 1 rectangle 29" x 32")</i>
Ties	Cut 4 strips 4" x WOF - sew 3 strips together end-to-end to create one long strip - cut 2 strips 4" x 60" from one strip cut a 4" x 30" for neck strap and a 4" x 3" strip for rectangle ring
Pocket	Cut 2 strips 8½" x WOF - cut 2 rectangles 8½" x 11" <i>(If design runs parallel to selvage cut 1 strip 11" X WOF - cut 2 rectangles 8½" x 11")</i>

Template Instructions

Print pages 5 and 6 at 100%.
Do not fit to page or scale to fit.

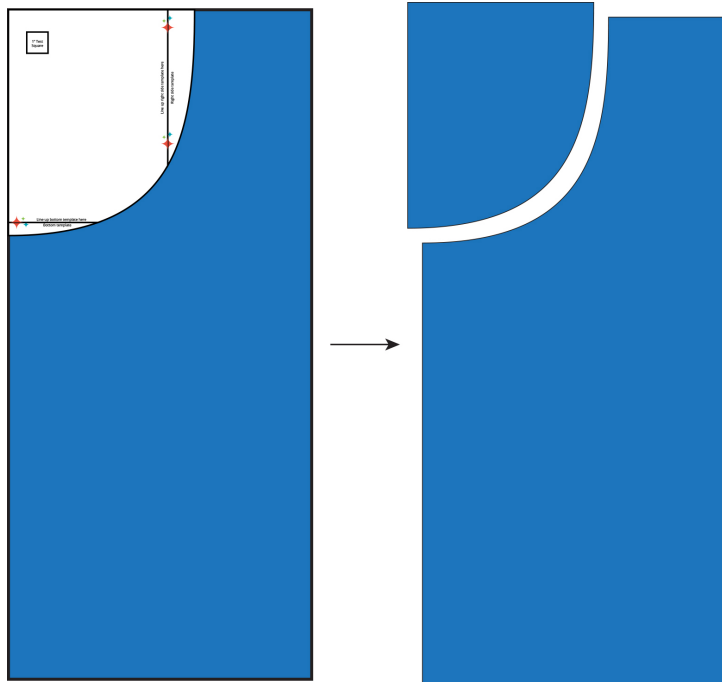
Measure the 1" test square to make sure it measures 1". If it does not the templates may be a little larger or smaller (which is okay for the apron as long as it isn't drastic).

Cut the templates out along the lines and tape them together, using the Lumin logos as a guide if needed.



Assembly Instructions

Step 1: Fold the apron front in half the long way and place it with the fold on the right. Lay the template in the upper left corner of fabric as shown below and cut around the template. Discard the pieces cut off.



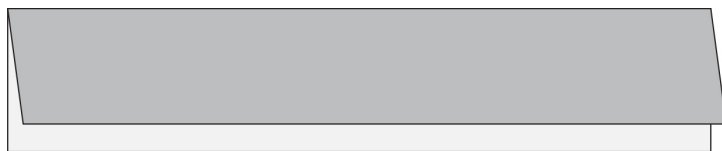
Open up back up the apron front, it should like below. Repeat for apron lining



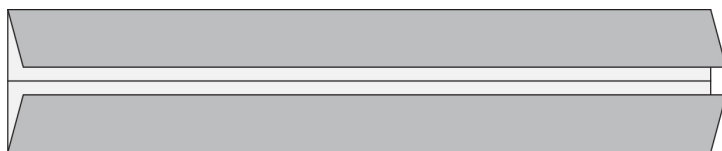
Step 2: To make the ties, fold a short end of a 4" x 60" tie ½" WST. Press.



Fold in half the long way WST and press.



Open the tie up along the same fold and fold the edges in to the middle creased line and press.



Fold the tie in half again along the original fold line. Press. The tie should be about 1" wide.



Topstitch about an ⅛" away from the edge along one side, across the short end that is folded under and back along the second side.



Repeat to make a second tie.

Repeat with 4" x 30" neck strap.

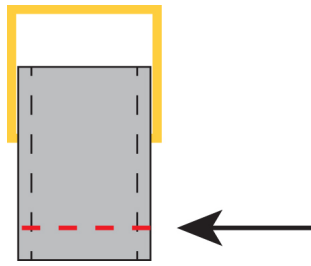
Step 3: In the same manner as Step 2, make the 4" x 30" neck strap.

In the same manner folding the 3" x 4" neck strap base together lining up the 4" sides. Fold the 4" sides the to middle and fold the tie in half again along the original fold line. Press. The neck strap base should measure approx 1" x 3".

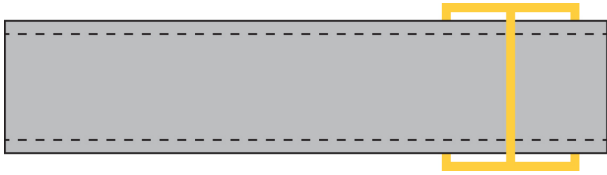
Topstitch along both edges of the tie about an 1/8" away from the edge.

Assembly Instructions

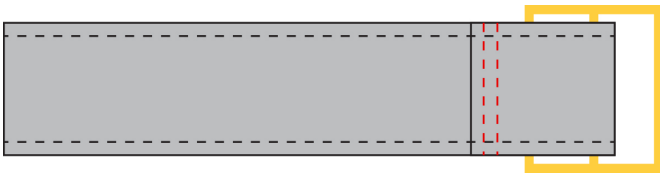
Step 4: Fold the 1" x 3" neck strap base around the rectangle ring. Line up the raw edges and baste $\frac{1}{4}$ " from the edge.



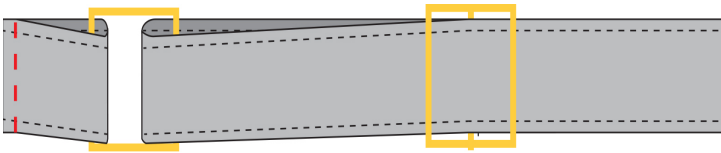
Step 5: Take the neck strap and weave it through the rectangle slider.



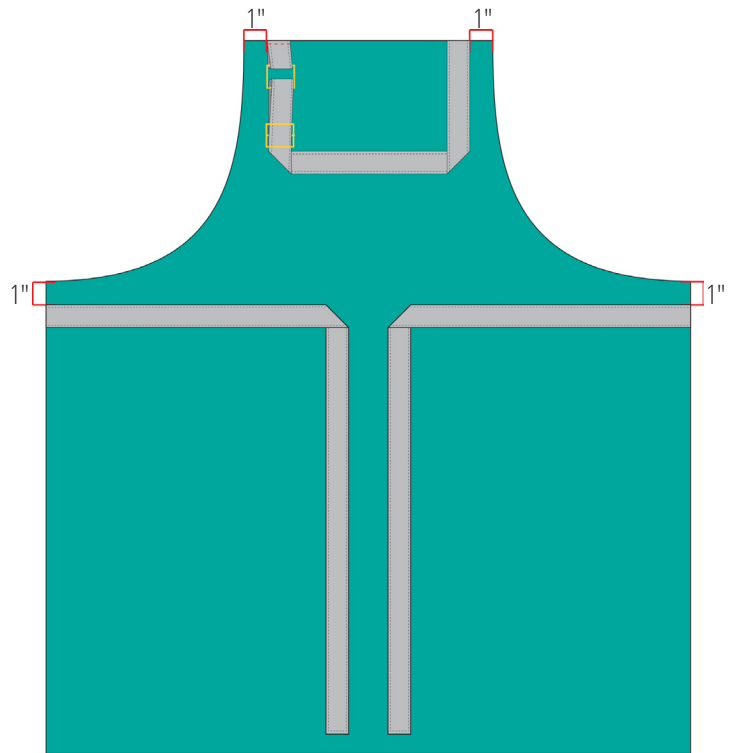
Fold the strap back so the strap wraps around the middle bar of the slider. Stitch the end down as close to the hardware as possible, making sure to keep the hardware out of the way. Reinforce with another line of stitching.



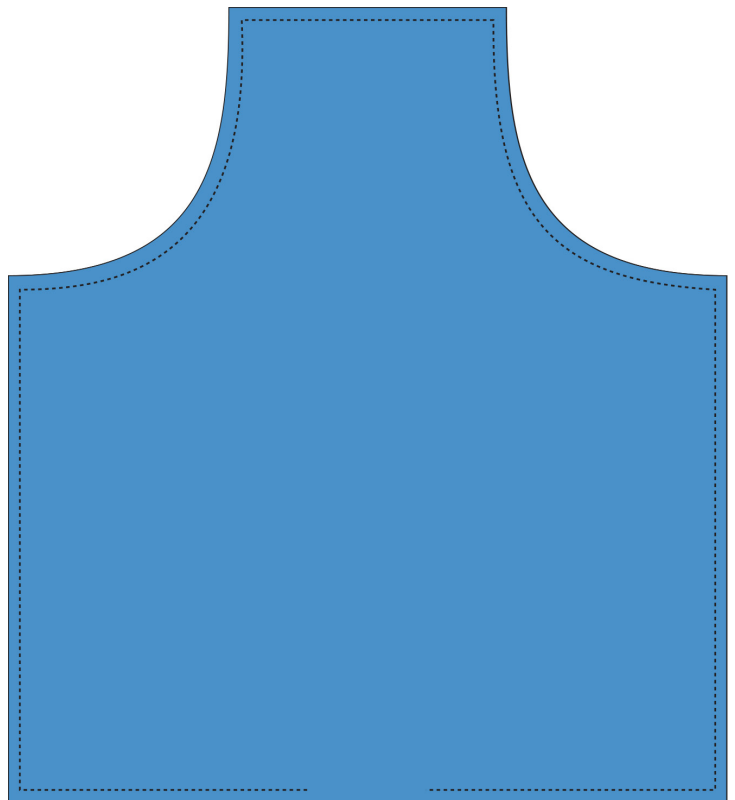
Step 6: Slide the rectangle ring through the remaining end and then weave the same end back through the rectangle slider again.



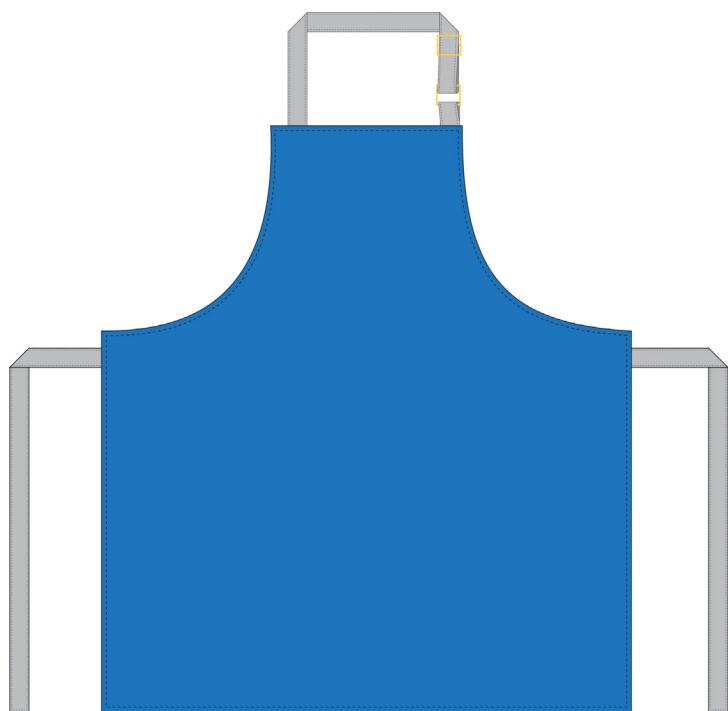
Step 7: Lay the lining face up and mark in 1" from each side of the top for neck strap, and down 1" from each side for straps. Lay straps and neck strap on apron lining as shown, lining up raw edges of all straps with the edges of the apron and making sure not to twist the neck strap. Pin or baste in place.



Step 8: Lay the apron front on top of the lining RST. Stitch around the outside of the apron with a $\frac{1}{2}$ " seam allowance making sure not to catch the non basted ends of the straps. Leave a 4" gap in the bottom for turning.



Step 9: Clip seam allowance of curves and turn right side out. Press and topstitch $\frac{1}{8}$ " from the edge, closing gap in the bottom as you go.



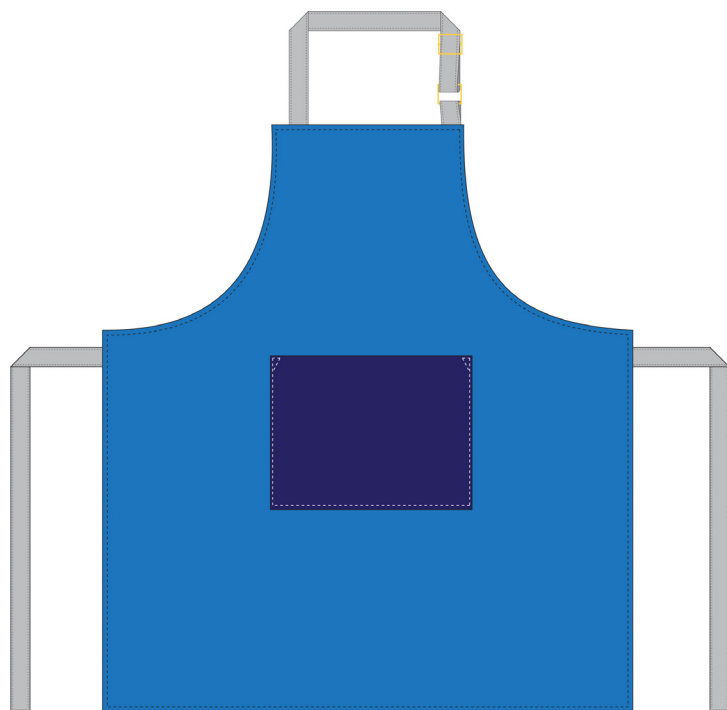
Step 10: Take the two pocket pieces and lay them RST stitch around the edge leave a 3" gap in the bottom for turning.



Turn right side out and press.

Step 11: Fold apron and pocket in half and crease to mark the middles. Measure up 11" from the bottom and using chalk or other marking tool, draw a horizontal line a few inches long in the middle to mark the placement bottom of the pocket.

Place the pocket on the apron, matching center creases and lining up the long edge that has the 3" gap with the line drawn on the apron. Topstitch $\frac{1}{8}$ " away from the edge, down one side of the pocket, across the bottom and up the other side, reinforcing the top corners as you go.

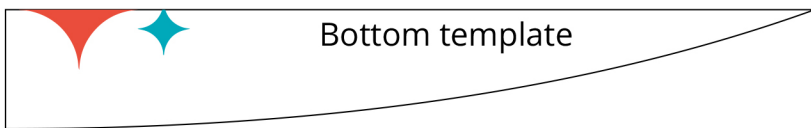
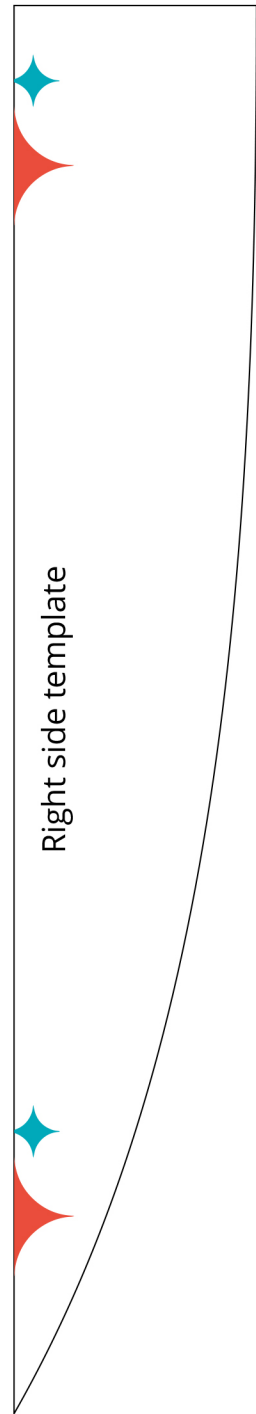
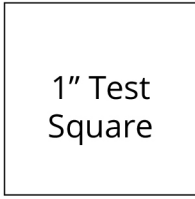


Woohoo! Your Apron is now finished!

1" Test
Square

Line up right side template here

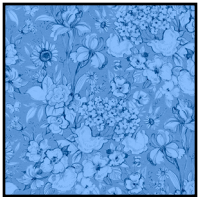
Line up bottom template here



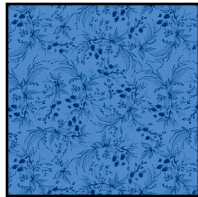
Amalfi Coast



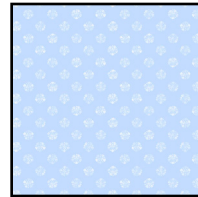
Fabric Guide



Front
W105-003-555
1 yard



Lining
W105-006-555
1 yard



Ties
W105-009-505
½ yard



Pocket
W105-001-055
Fat Quarter*

Additional Supplies:
one 1" rectangle ring
one 1" slider buckle
chalk or other marking tool

*Additional fabric may be needed for fussy cutting.

Patchwork Picnic



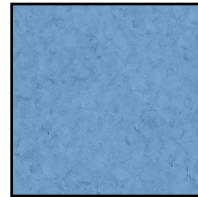
Fabric Guide



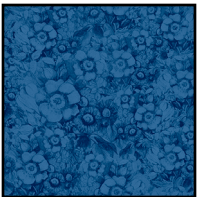
Front
W105-012-553
1 yard



Lining
W105-016-550
1 yard



Ties
W110-001-515
½ yard



Pocket
W105-015-557
Fat Quarter

Additional Supplies:
one 1" rectangle ring
one 1" slider buckle
chalk or other marking tool

Wild Garden



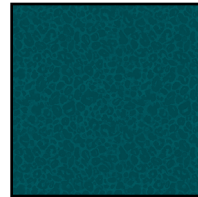
Fabric Guide



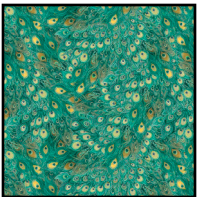
Front
W100-003-719
1 yard



Lining
W100-008-999
1 yard



Ties
W100-010-999
½ yard



Pocket
W100-011-989
Fat Quarter

Additional Supplies:
one 1" rectangle ring
one 1" slider buckle
chalk or other marking tool