

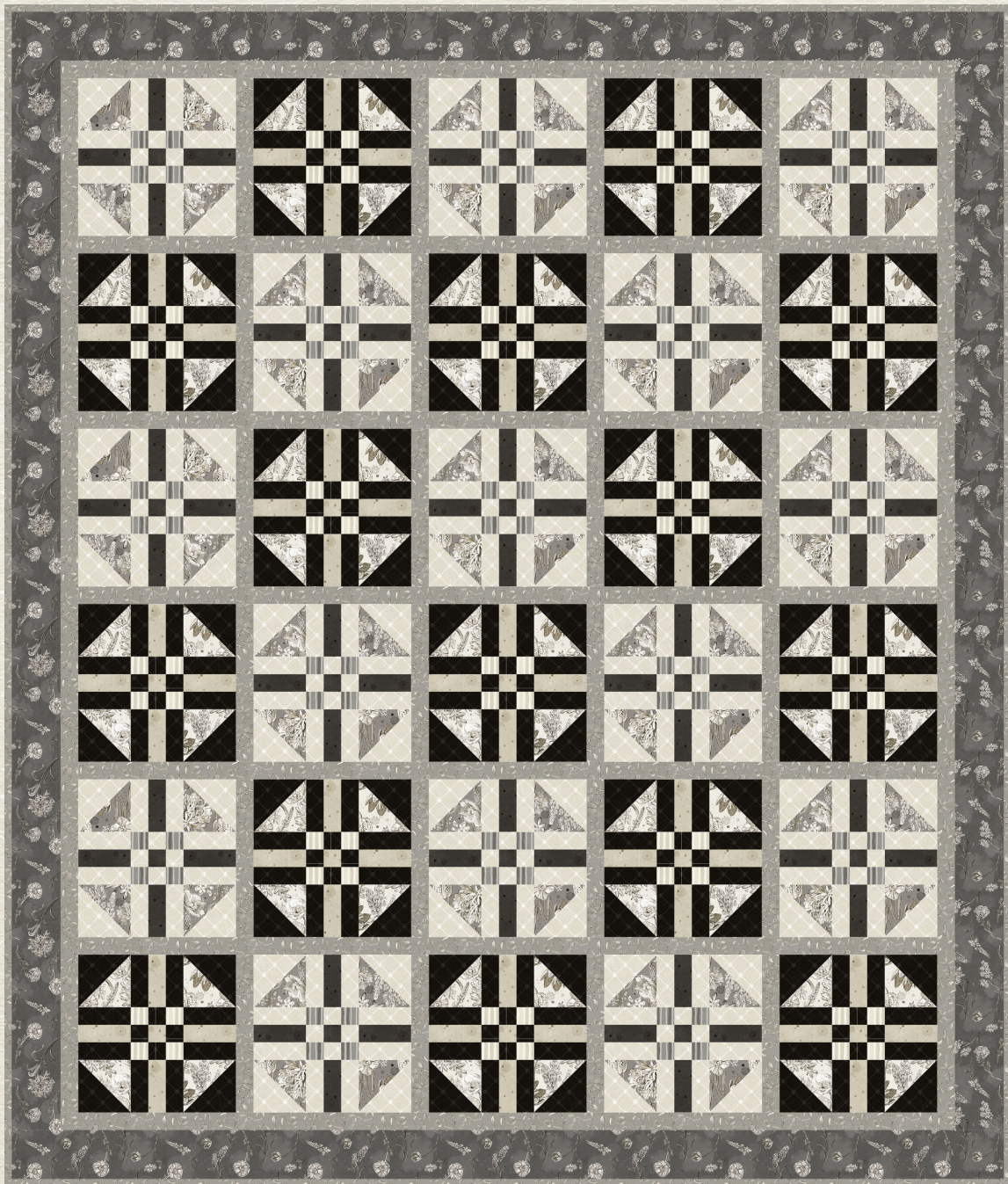
Light & Shadow

by Elise Lea for White Owl Textiles

Finished size: 57" x 67"

Featuring:

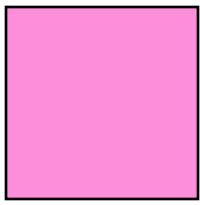
Botanical Sketchbook



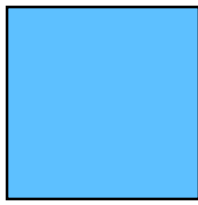
Difficulty: Confident Beginner



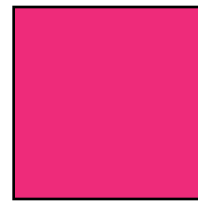
Fabric Guide



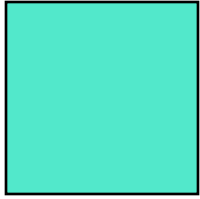
Fabric A
3/8 yard



Fabric B
3/8 yard



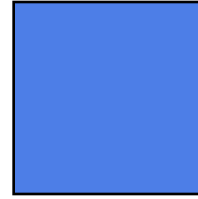
Fabric C
1/3 yard



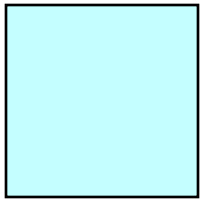
Fabric D
1/3 yard



Fabric E
1/4 yard



Fabric F
1/4 yard



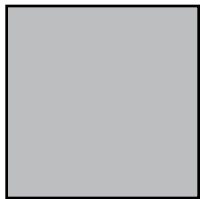
Fabric G
1 yard



Fabric H
1 yard



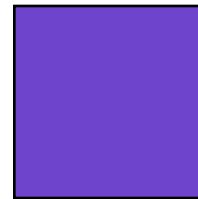
Fabric I
7/8 yard



Fabric J
5/8 yards



Binding
5/8 yard



Suggested Backing
3 5/8 yards

Kindly note, our free patterns are not to be sold nor hosted on any other websites. We appreciate your understanding.

All seam allowances are 1/4" unless otherwise stated.
Press seams open unless otherwise stated.
RST = Right Sides Together

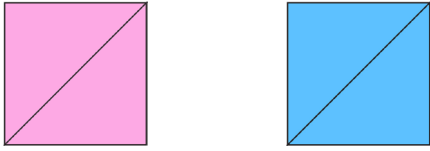
WOF = Width of Fabric (selvage to selvage)
HST = Half Square Triangle

Cutting Instructions

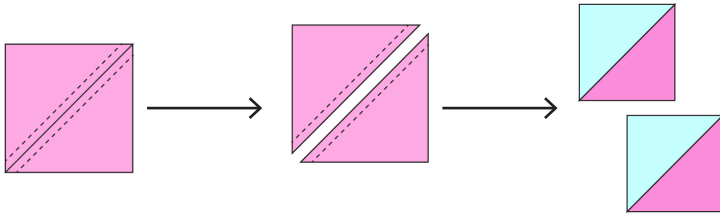
Fabrics A & B	Cut 3 strips 4" x WOF - subcut 30 squares 4" x 4"
Fabrics C & D	Cut 6 strips 1 1/2" x WOF for strip sets
Fabrics E & F	Cut 4 strips 1 1/2" x WOF for strip sets
Fabrics G & H	Cut 3 strips 4" x WOF - subcut 30 squares 4" x 4" Cut 14 strips 1 1/2" x WOF for strip sets
Fabric I	Cut 18 strips 1 1/2" x WOF <ul style="list-style-type: none"> • From 6 of the strips subcut 24 strips 1 1/2" x 9 1/2" for vertical sashing Sew the remaining strips together end-to-end to create one long strip - subcut: <ul style="list-style-type: none"> • 5 strips 1 1/2" x 49 1/2" horizontal sashing • 2 strips 1 1/2" x 59 1/2" for side inner borders • 2 strips 1 1/2" x 51 1/2" for top and bottom inner borders
Fabric J	Cut 6 strips 3 1/2" x WOF Sew strips together end-to-end to create one long strip - subcut: <ul style="list-style-type: none"> • 2 strips 3 1/2" x 61 1/2" for side outer borders • 2 strips 3 1/2" x 57 1/2" for top and bottom outer border
Binding	Cut 7 strips 2 1/2" x WOF

Piecing Instructions

Step 1: Draw a line across the diagonal on the back of all 4" x 4" Fabric A & B squares.

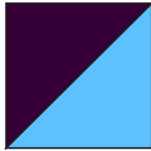


Step 2: Place a 4" x 4" Fabric A square RST with a 4" x 4" Fabric G square. Sew ¼" away from both side of the drawn line. Cut apart on drawn line open and press. Square both blocks up to 3½" x 3½".

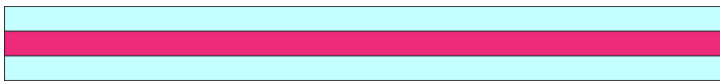


Repeat to make a total of 60 A/G HSTs.

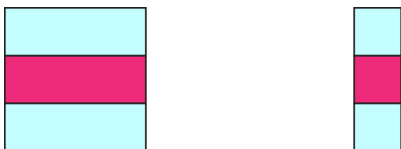
Step 3: Repeat Step 3 with 4" x 4" Fabric B squares and 4" x 4" Fabric H squares to create a total of 60 B/H HSTs.



Step 4: Make a GCG strip set by sewing a 1½" x WOF Fabric G strip to both sides of a 1½" x WOF Fabric C strip. Press. Repeat to make 6 strip sets.



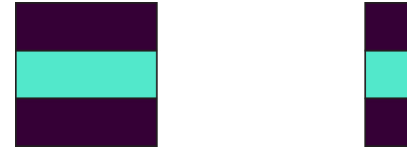
Cut the resulting strip sets into a total of sixty 3½" x 3½" squares and fifteen 1½" x 3½" strips.



Step 5: Repeat Step 4 to make 6 HDH strip sets.



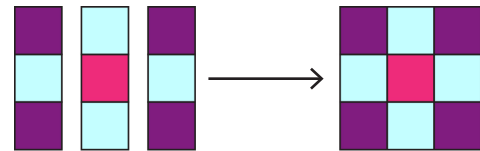
Cut the resulting strip sets into a total of sixty 3½" x 3½" squares and fifteen 1½" x 3½" strips



Step 6: Repeat Step 4 to make two EGE strip sets and two FHF strip sets. Cut the resulting strip set pairs into a total of thirty 1½" x 3½" strips.

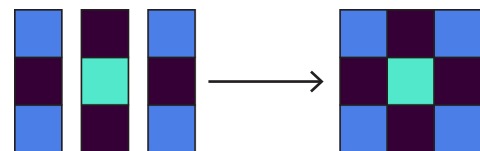


Step 7: Gather two 1½" x 3½" EGE strips and one 1½" x 3½" GCG strip. Sew them together as shown. Press.



Repeat to make a total of 15 Unit A.

Step 8: Gather two 1½" x 3½" FHF strips and one 1½" x 3½" HDH strip. Sew them together as shown.



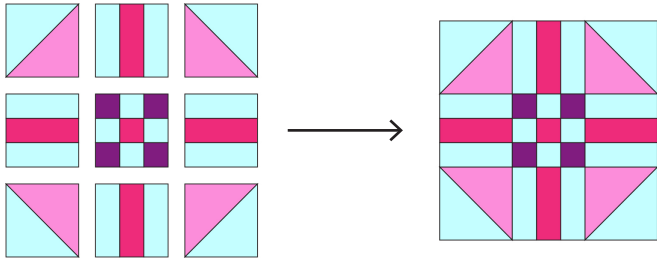
Press. Repeat to make a total of 15 Unit B.

Step 9: Gather the following blocks:

- 4 A/G HSTs
- 4 GCG 3½" squares
- 1 Unit A

Piecing Instructions

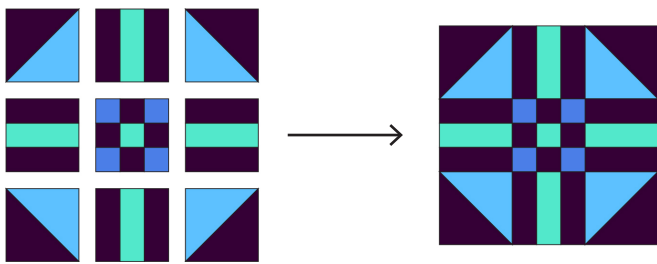
Lay the pieces out as shown and sew the pieces into rows. Press. Sew the rows together. Press. Repeat to make 15 Block A.



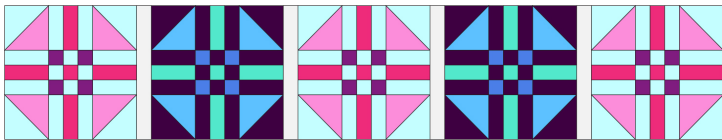
Step 10: Gather the following blocks:

- 4 B/H HSTs
- 4 HDH 3½" squares
- 1 Unit B

Lay the pieces out as shown and sew the pieces into rows. Press. Sew the rows together. Press. Repeat to make 15 Block B.

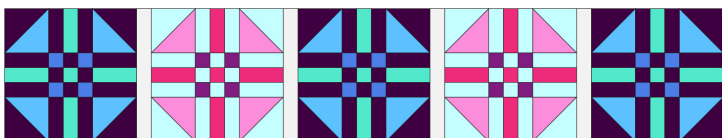


Step 11: Gather 3 of Block A, 2 of Block B, and four 1½" x 9½" Fabric I vertical sashing strips. Sew the blocks together as shown with a Fabric I sashing strip between blocks. Press.



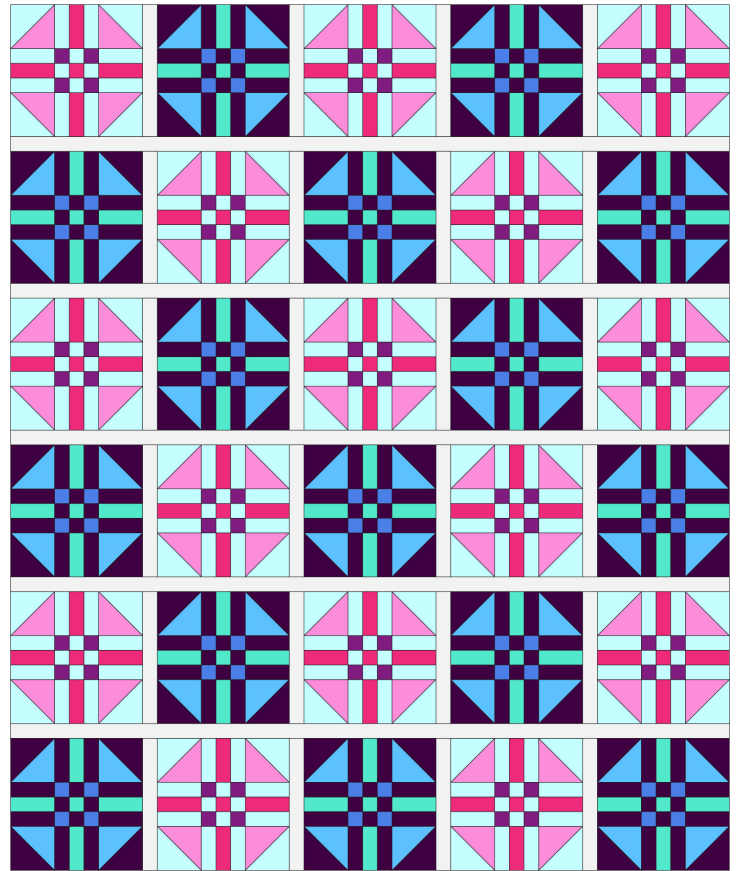
Repeat to make 3 Row 1.

Step 12: Gather 3 of Block B, 2 of Block A, and four 1½" x 9½" Fabric I vertical sashing strips. Sew the blocks together as shown with a Fabric I sashing strip between blocks. Press.



Repeat to make 3 Row 2.

Step 13: Sew rows together as shown, starting with Row 1, alternating with row 2 and placing a 1½" x 49½" Fabric I horizontal sashing strip between rows. Press.

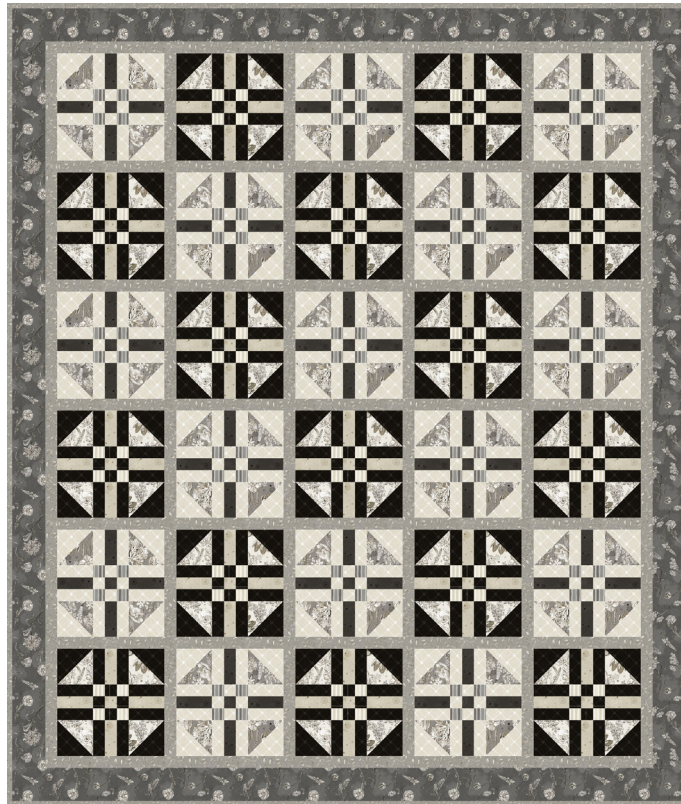


Step 14: Sew the side inner borders to the sides of the quilt top. Press. Sew the top and bottom inner borders to the top and bottom of the quilt top. Press.

Step 15: Sew the side outer borders to the sides of the quilt top. Press. Sew the top and bottom outer borders to the top and bottom of the quilt top. Press.

Woohoo! Your quilt top is finished. Now, quilt and bind using your preferred method.

Fabric Guide



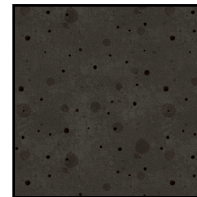
Fabric Guide



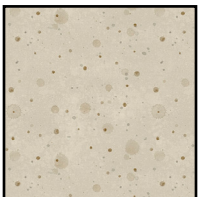
Fabric A
W115-016-770
 $\frac{3}{8}$ yard



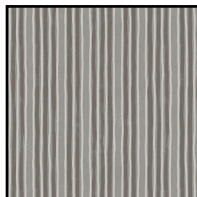
Fabric B
W115-016-070
 $\frac{3}{8}$ yard



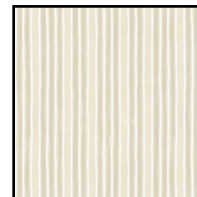
Fabric C
W115-025-777
 $\frac{1}{3}$ yard



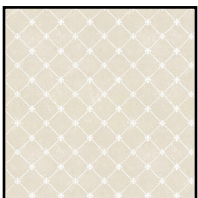
Fabric D
W115-025-070
 $\frac{1}{3}$ yard



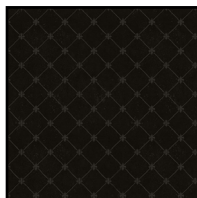
Fabric E
W115-024-777
 $\frac{1}{4}$ yard



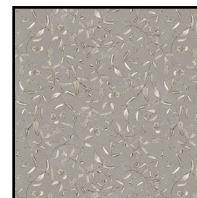
Fabric F
W115-024-000
 $\frac{1}{4}$ yard



Fabric G
W115-023-000
1 yard



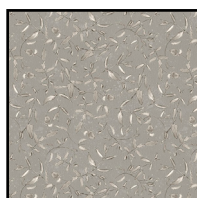
Fabric H
W115-023-777
1 yard



Fabric I
W115-020-700
 $\frac{7}{8}$ yard



Fabric J
W115-018-707
 $\frac{5}{8}$ yards



Binding*
W115-020-700
 $\frac{5}{8}$ yard



Suggested Backing
W115-018-070
 $3\frac{5}{8}$ yards

Binding also used as Fabric I