

Framework Tote

by Heather Seth & Elise Lea for White Owl Textiles

Finished size: 13" x 6" x 20"



Botanical Sketchbook - Page 5



Petal Whispers - Page 6



Fairy Boutique - Page 7



Growing in Color - Page 8



Indigo Lane - Page 9



Paddle & Pine - Page 10



Rooster Reverie - Page 11



Fabric Guide



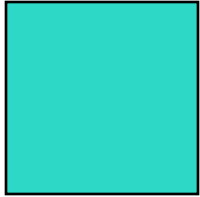
Outer Main
2/3 yard



Binding/Bottom
3/8 yard



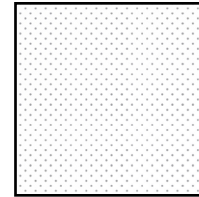
Handles
3/8 yard



Lining
5/8 yard



Optional Accent Pocket*
Fat Quarter or one panel block



Interfacing
See notes below for yardage

***Matching pocket fabric is included in Outer Main Fabric, if using an additional fabric for an accent pocket, you will need one 9½" square.**

Additional Supplies:
 5/8 yard Pellon Decor Bond or Fusible Fleece
 1 7/8 yards Pellon SF101 or other medium weight fusible interfacing
 Chalk, hera marker or water-soluable pen

Kindly note, our free patterns are not to be sold nor hosted on any other websites. We appreciate your understanding.

All seam allowances are ¼" unless otherwise stated.
 Press seams open unless otherwise stated.
 WOF = Width of Fabric (selvage to selvage)

RST = Right Sides Together
 WST = Wrong Sides Together

Cutting Instructions

Outer Main*	Cut 1 strip 12½" x WOF - cut 2 rectangles 12½" x 21" for outer main Cut 1 strip 9½" x WOF - cut into 2 squares 9½" x 9½" for pocket
Binding/Bottom	Cut 1 strip 6" x WOF - cut into 2 rectangles 6" x 21" for outer bag bottom Cut 2 strips 2¼" x WOF for binding - Sew together end to end to make one long binding strip - cut one 2¼" x 11" strip for pocket binding
Handles	Cut 3 strips 4" x WOF - sew together end-to-end to create one long strip - cut into 2 strips 4" x 50" for handles
Lining	Cut 2 rectangles 18" x 21" for lining
Optional Accent Pocket**	Fussy cut 1 square 9½" x 9½"
Decor Bond/ Fusible Fleece	Cut 1 strip 12½" x WOF - cut 2 rectangles 12½" x 21" for outer main Cut 1 strip 6" x WOF - cut into 2 rectangles 6" x 21" for outer bag bottom
Pellon SF-101/ Medium Weight Interfacing	Cut 6 strips 4" x WOF for handles Cut one strip 9½" x WOF - cut 2 squares 9½" x 9½" for pocket Cut 2 strips 21" x WOF - cut 2 rectangles 21" x 18" for lining

***If making optional contrast pocket you will only need one 9½" square from outer main.**

****Omit this if you are making the pocket match the outer main fabric.**

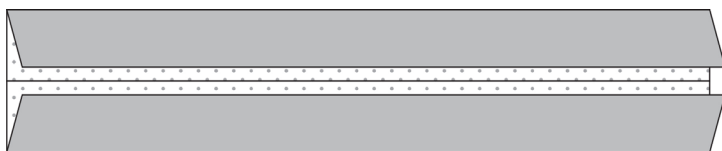
Assembly Instructions

Step 1: Fuse all the interfacing to the wrong side of the corresponding pieces. *Note on the handles: you will need to use 3 interfacing pieces per handle overlapping the interfacing strips slightly where they meet.*

Step 2: To make the handles, fold a 4" x 50" interfaced handle in half the long way wrong sides together and press.



Open the handle up and fold the edges of the handle in to the middle creased line and press.



Fold the strap in half again along the original fold line. Press. The handle should be about 1" wide.



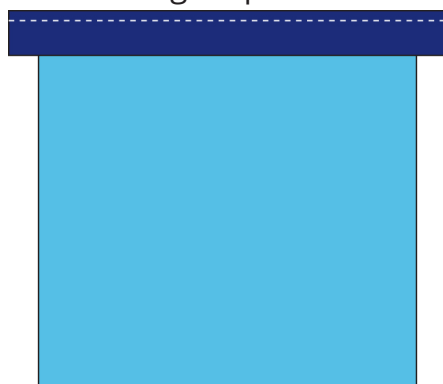
Topstitch along both edges of the handle about an 1/8" away from the edge.



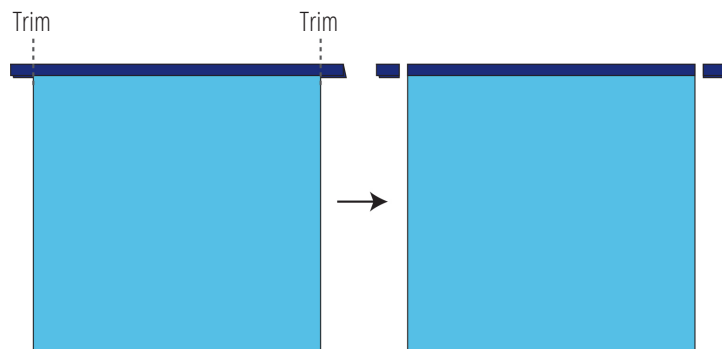
Repeat to make a second handle

Step 3: Place the Pocket and pocket lining WST (if using an accent pocket make sure it is face up). Take the 2 1/4" x 11" binding strip and fold it in half WST.

Press. Line up the raw edges of the binding with the top edge of the pockets RST and stitch a 1/4" away from the edge.

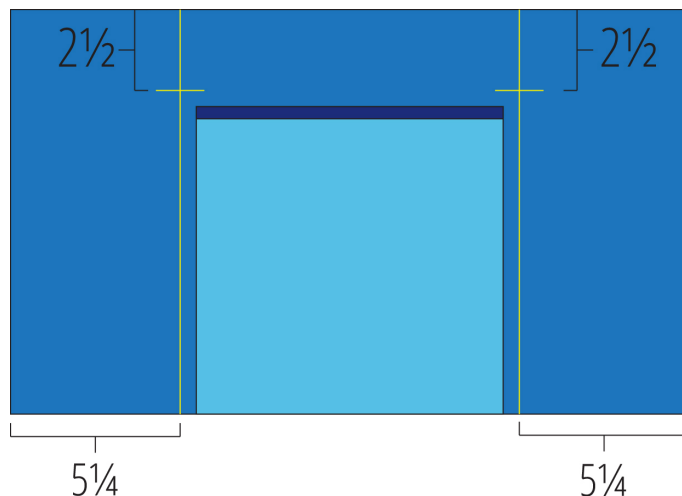


Fold the binding up and press. Fold binding up and over the raw edges and onto the backside of the pocket. Stitch binding down 1/8" from the edge. Trim excess binding so the edges are square with the pocket.



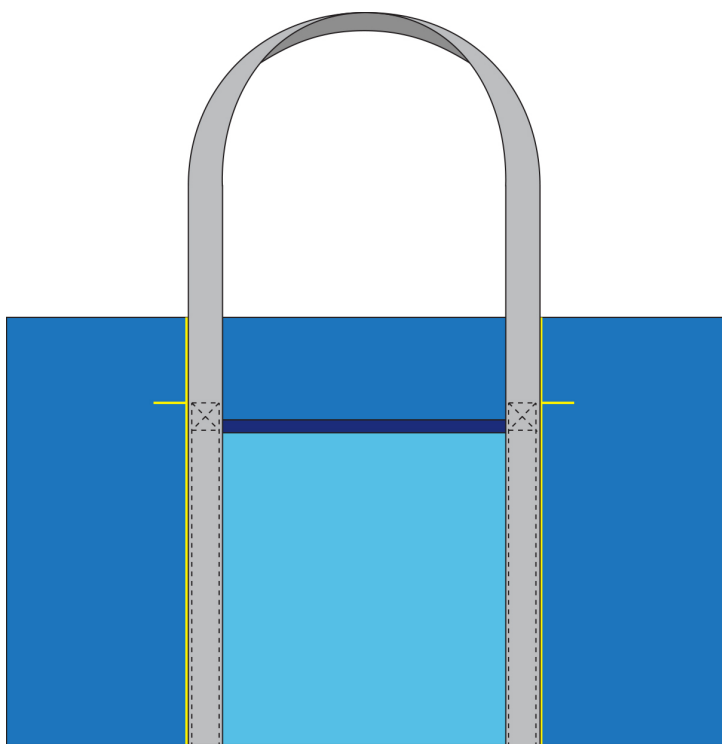
Step 4: Fold one of the interfaced Outer Main fabric rectangles in half, short sides together and make a small crease at the bottom to mark the center. Open back up and lay the piece face up. Repeat with pocket from Step 3 to mark the center and lay it on top of the Outer Main, lining up the bottom edges and the center creases - this will be your tote front.

Measure in 5 1/4" from the short side of the Outer Main and draw a line with chalk, hera marker or a water soluble pen. Repeat for opposite side. From the top of the fabric, measure down 2 1/2" and draw a short line that intersects the vertical one. Repeat the marked lines on other Outer Main without the pocket - this will be your tote back.



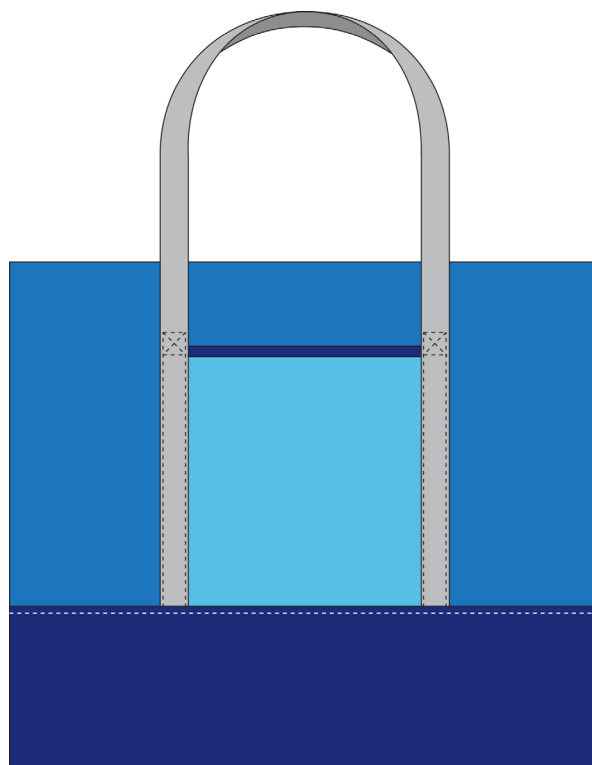
Step 5: Take a handle from Step 2 and lay it on top of the tote front, lining up the bottom edges of the strap with the bottom edge of the tote and the outer edges of the strap with the drawn lines, making sure that your handle is not twisted. *Note: On tote front the pocket edges should be centered in the middle of the handle.*

Starting at the bottom of one end of the handle, stitch the strap down, following your topstitching lines. Stop stitching when you get to the horizontal line marked on the tote front. Reinforce the handle as shown and stitch down the other side. Repeat on other end of handle. Repeat with second handle and tote back.

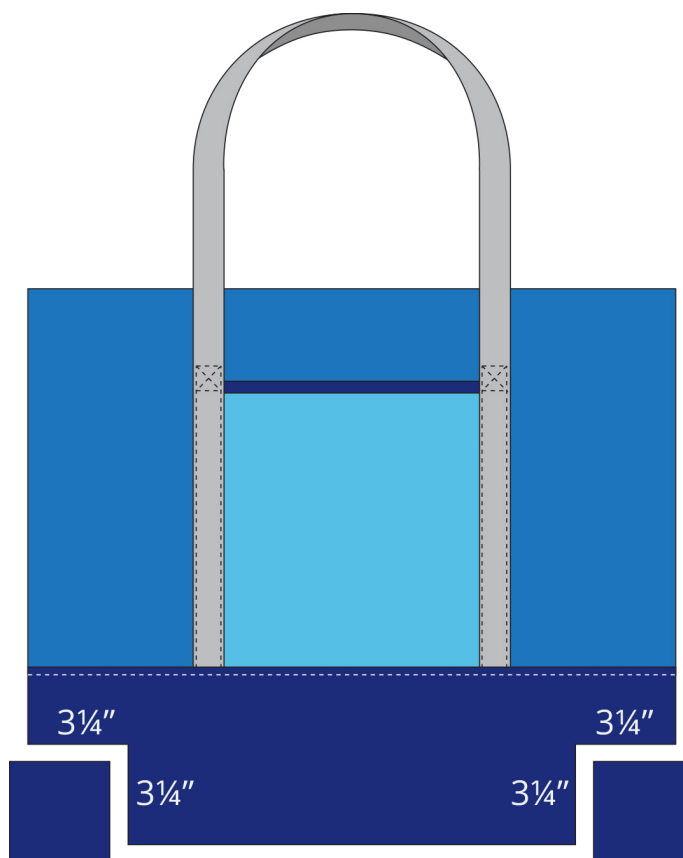


Step 6: Sew a 6" x 21" outer bag bottom to the bottom of the tote front. Press seam towards bag bottom. Top stitch on bag bottom $\frac{1}{8}$ " away from the seam.

Repeat with tote back and remaining bag bottom.

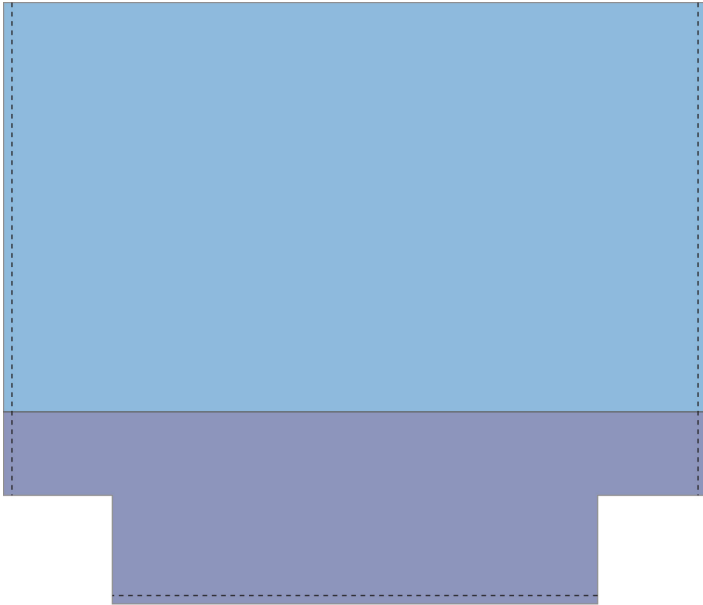


Step 7: On the tote front, cut a $3\frac{1}{4}$ " x $3\frac{1}{4}$ " square out of both corners on the bag bottom. Repeat for tote back.



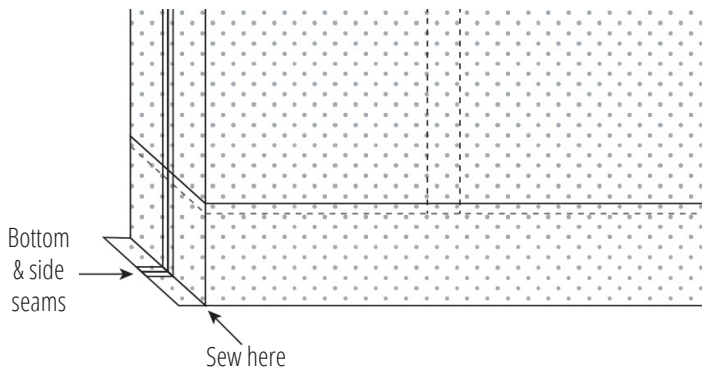
Step 8: Repeat Step 7 on the tote lining pieces, cutting the squares out of the bottom corners.

Step 9: Place the tote front and tote back RST. Sew them together along the sides and the bottom, making sure to keep the handles out of the way. Backstitch at the beginning and end of each line to reinforce the seams. Press seams open or to the side.



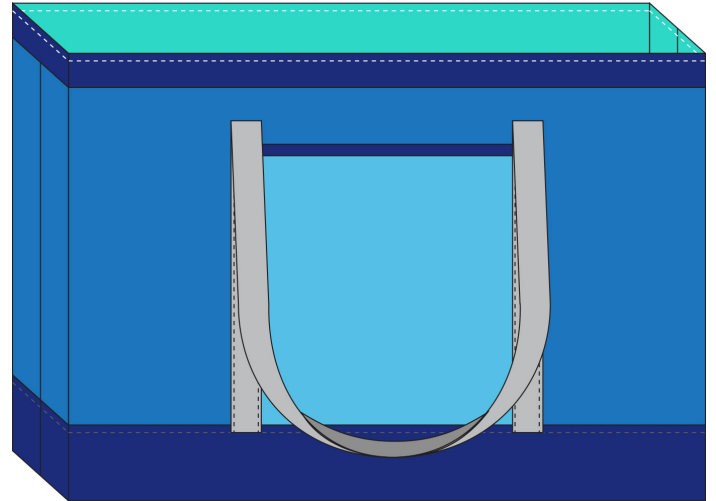
Step 10: Repeat with lining pieces.

Step 11: On one corner of the Outer tote, bring the bottom seam up to the side seam so the corner of the bag now looks like a straight line. Match seams and sew $\frac{1}{4}$ " away from the edge. Repeat for other side. Turn bag right side out.

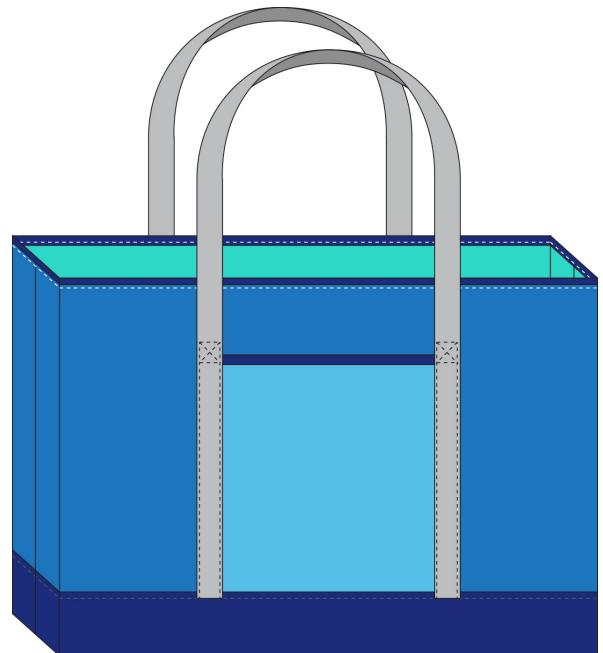


Step 12: Repeat Step 12 with tote lining, but do not turn right side out.

Step 13: Place tote lining inside of outer tote lining up the side seams. Fold the remaining binding in half the long ways and press. Pin the binding to the top of the bag matching raw edges. Overlap the ends of the binding by $\frac{1}{2}$ " and trim off extra.



Sew ends of binding together to make a loop and finish pinning it to the top of the bag (you may want to use a slightly larger bigger seam allowance since the binding tends to stretch a bit). Sew the binding down through all 3 layers making sure to keep the handles out of the way. Press binding up and fold over into the lining of the bag encasing all raw edges. Stitch binding down $\frac{1}{8}$ " from the edge of the binding.



Woohoo! Your tote is now finished!

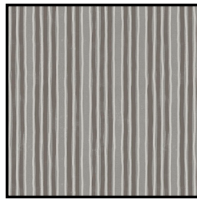
Botanical Sketchbook



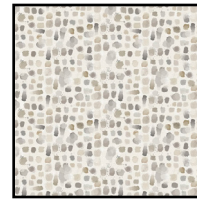
Fabric Guide



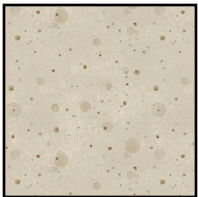
Outer Main
W115-017-007
 $\frac{2}{3}$ yard



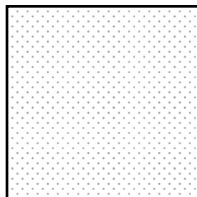
Binding/Bottom
W115-024-777
 $\frac{3}{8}$ yard



Handles
W115-019-007
 $\frac{3}{8}$ yard



Lining
W115-025-070
 $\frac{5}{8}$ yard



Interfacing
See notes below
for yardage

***Matching pocket fabric is included in Outer Main Fabric, if using an additional fabric for an accent pocket, you will need one 9½" square.**

Additional Supplies:

$\frac{5}{8}$ yard Pellon Decor Bond or Fusible Fleece
1 $\frac{7}{8}$ yards Pellon SF101 or other medium weight fusible interfacing
Chalk, hera marker or water-soluble pen

Petal Whispers



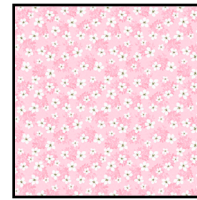
Fabric Guide



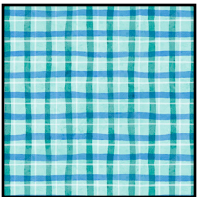
Outer Main
W110-016-096
 $\frac{2}{3}$ yard



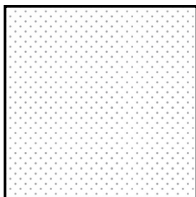
Binding/Bottom
W110-023-999
 $\frac{3}{8}$ yard



Handles
W110-019-101
 $\frac{3}{8}$ yard



Lining
W110-022-950
 $\frac{5}{8}$ yard



Interfacing
See notes below
for yardage

**Matching pocket fabric is included in Outer Main Fabric, if using an additional fabric for an accent pocket, you will need one 9½" square.*

Additional Supplies:

$\frac{5}{8}$ yard Pellon Decor Bond or Fusible Fleece
1 $\frac{7}{8}$ yards Pellon SF101 or other medium weight fusible interfacing
Chalk, hera marker or water-soluble pen

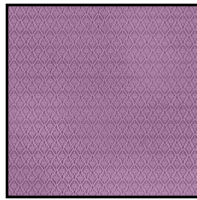
Fairy Boutique



Fabric Guide



Outer Main
W130-029-646
 $\frac{2}{3}$ yard



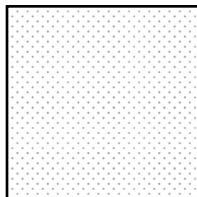
Binding/Bottom
W130-035-435
 $\frac{3}{8}$ yard



Handles
W130-001-650
 $\frac{3}{8}$ yard



Lining
W130-033-405
 $\frac{5}{8}$ yard



Interfacing
See notes below
for yardage

***Matching pocket fabric is included in Outer Main Fabric, if using an additional fabric for an accent pocket, you will need one 9½" square.**

Additional Supplies:

$\frac{5}{8}$ yard Pellon Decor Bond or Fusible Fleece
1 $\frac{7}{8}$ yards Pellon SF101 or other medium weight fusible interfacing
Chalk, hera marker or water-soluble pen

Growing in Color



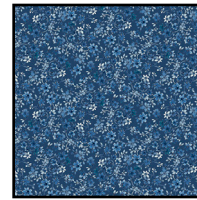
Fabric Guide



Outer Main
W175-005-545
 $\frac{2}{3}$ yard



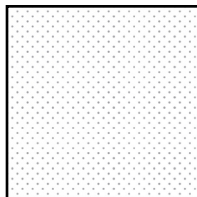
Binding/Bottom
W130-001-595
 $\frac{3}{8}$ yard



Handles
W175-007-550
 $\frac{3}{8}$ yard



Lining
W175-008-545
 $\frac{5}{8}$ yard



Interfacing
See notes below
for yardage

**Matching pocket fabric is included in Outer Main Fabric, if using an additional fabric for an accent pocket, you will need one 9½" square.*

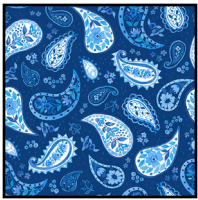
Additional Supplies:

$\frac{5}{8}$ yard Pellon Decor Bond or Fusible Fleece
1 $\frac{7}{8}$ yards Pellon SF101 or other medium weight fusible interfacing
Chalk, hera marker or water-soluble pen

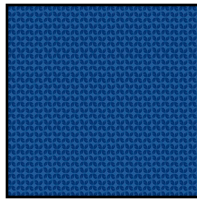
Indigo Lane



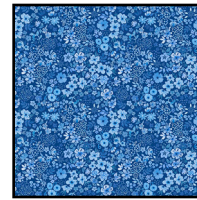
Fabric Guide



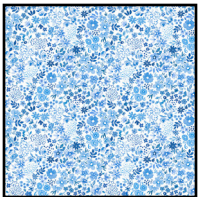
Outer Main
W160-003-550
 $\frac{2}{3}$ yard



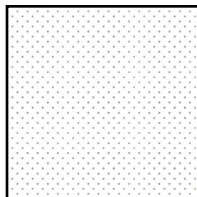
Binding/Bottom
W160-008-555
 $\frac{3}{8}$ yard



Handles
W160-005-550
 $\frac{3}{8}$ yard



Lining
W160-005-050
 $\frac{5}{8}$ yard



Interfacing
See notes below
for yardage

**Matching pocket fabric is included in Outer Main Fabric, if using an additional fabric for an accent pocket, you will need one 9½" square.*

Additional Supplies:

$\frac{5}{8}$ yard Pellon Decor Bond or Fusible Fleece
1 $\frac{7}{8}$ yards Pellon SF101 or other medium weight fusible interfacing
Chalk, hera marker or water-soluble pen

Paddle & Pine



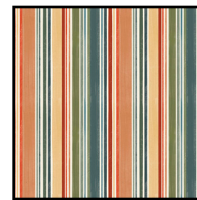
Fabric Guide



Outer Main
W135-023-035
 $\frac{2}{3}$ yard



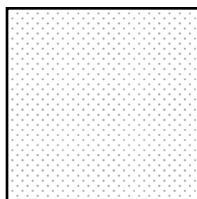
Binding/Bottom
W135-026-555
 $\frac{3}{8}$ yard



Handles
W135-029-523
 $\frac{3}{8}$ yard



Lining
W135-028-000
 $\frac{5}{8}$ yard



Interfacing
See notes below
for yardage

***Matching pocket fabric is included in Outer Main Fabric, if using an additional fabric for an accent pocket, you will need one 9½" square.**

Additional Supplies:

$\frac{5}{8}$ yard Pellon Decor Bond or Fusible Fleece
1 $\frac{7}{8}$ yards Pellon SF101 or other medium weight fusible interfacing
Chalk, hera marker or water-soluble pen

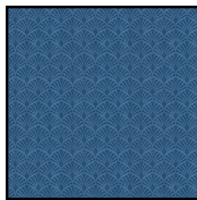
Rooster Reverie



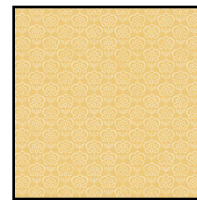
Fabric Guide



Outer Main
W125-043-252
 $\frac{2}{3}$ yard



Binding/Bottom
W105-048-555
 $\frac{3}{8}$ yard



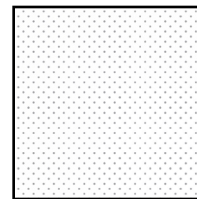
Handles
W105-047-202
 $\frac{3}{8}$ yard



Lining
W105-046-052
 $\frac{5}{8}$ yard



Optional Accent Pocket*
W105-041-523
 $\frac{2}{3}$ yard



Interfacing
See notes below
for yardage

**Matching pocket fabric is included in Outer Main Fabric, if using an additional fabric for an accent pocket, you will need one 9½" square.*

Additional Supplies:

$\frac{5}{8}$ yard Pellon Decor Bond or Fusible Fleece
1 $\frac{7}{8}$ yards Pellon SF101 or other medium weight fusible interfacing
Chalk, hera marker or water-soluble pen