

# Framework Runner

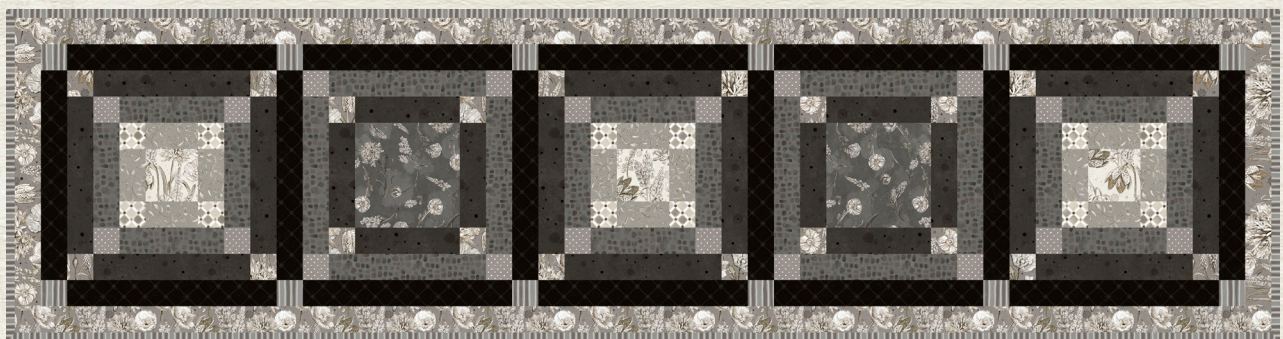
by Heather Seth for White Owl Textiles

Finished size: 72" x 18"

Featuring:

*Botanical Sketchbook*

Difficulty: Confident Beginner



Botanical Sketchbook - Page 4

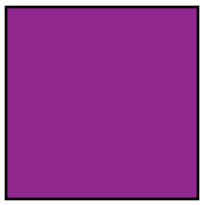
*Petal Whispers*



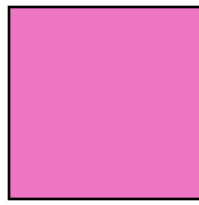
Petal Whispers - Page 5



## Fabric Guide



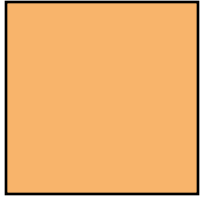
**Fabric A**  
Fat Eighth



**Fabric B**  
 $\frac{1}{3}$  yard



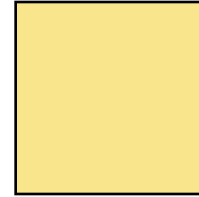
**Fabric C**  
 $\frac{3}{8}$  yard



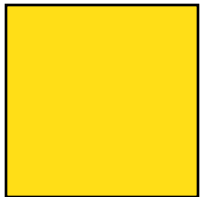
**Fabric D**  
 $\frac{1}{4}$  yard



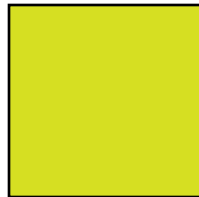
**Fabric E**  
 $\frac{1}{8}$  yard



**Fabric F**  
 $\frac{1}{8}$  yard



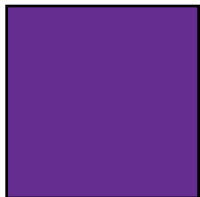
**Fabric G**  
 $\frac{1}{8}$  yard



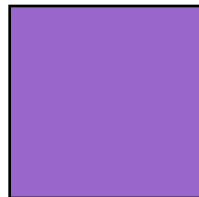
**Fabric H**  
 $\frac{1}{8}$  yard



**Fabric I**  
 $\frac{3}{8}$  yard



**Fabric J**  
 $\frac{1}{8}$  yard



**Binding**  
 $\frac{3}{8}$  yard



**Backing**  
1  $\frac{1}{2}$  yards

*Kindly note, our free patterns are not to be sold nor hosted on any other websites. We appreciate your understanding.*

All seam allowances are  $\frac{1}{4}$ " unless otherwise stated.  
Press seams open unless otherwise stated.

WOF = Width of Fabric (selvage to selvage)

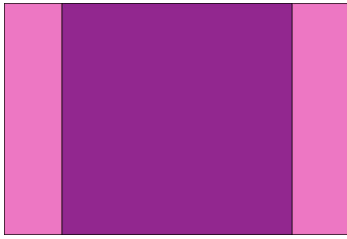
## Cutting Instructions

Fabric A	Cut one 6 $\frac{1}{2}$ " x WOF strip - subcut 2 squares 6 $\frac{1}{2}$ " x 6 $\frac{1}{2}$ "
Fabric B	Cut five 2" x WOF strips - subcut 12 strips 2" x 9 $\frac{1}{2}$ " and 8 strips 2" x 6 $\frac{1}{2}$ "
Fabric C	Cut six 2" x WOF strips - subcut 20 squares 2" x 2" for cornerstones <ul style="list-style-type: none"> <li>· subcut 2 strips 2" x 15<math>\frac{1}{2}</math>" for side outer borders</li> <li>· sew two 2" x WOF strips together end-to-end to create one long strip trim to 2" x 72<math>\frac{1}{2}</math>" for top outer border - repeat to make a bottom outer border</li> </ul>
Fabric D	Cut four 2" x WOF strips - subcut 8 strips 2" x 9 $\frac{1}{2}$ " and 12 strips 2" x 6 $\frac{1}{2}$ "
Fabric E	Cut one 2" x WOF strip - subcut 20 squares 2" x 2" for cornerstones
Fabric F	Cut one 2" x WOF - subcut 12 strips 2" x 3 $\frac{1}{2}$ "
Fabric G	Cut one 2" x WOF strip - subcut 12 squares 2" x 2" for cornerstones
Fabric H	Cut one 3 $\frac{1}{2}$ " strip - subcut 3 squares 3 $\frac{1}{2}$ " x 3 $\frac{1}{2}$ "
Fabric I	Cut six 2" x WOF strips - subcut 16 strips 2" x 12 $\frac{1}{2}$ " for sashing
Fabric J	Cut one 2" x WOF strip - subcut 12 squares 2" x 2" for sashing cornerstones
Binding	Cut five 2 $\frac{1}{2}$ " x WOF strips

# Piecing Instructions

## Block A

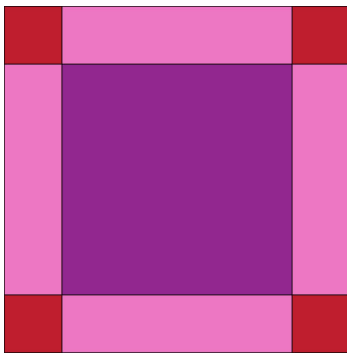
**Step 1:** Sew a 2" x 6½" Fabric B strip to either side of a 6½" x 6½" Fabric A square. Press.



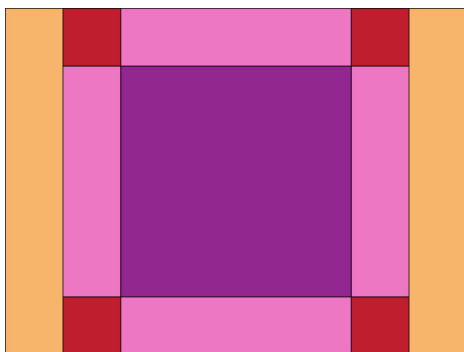
**Step 2:** Sew a 2" x 2" Fabric C square to both ends of a 2" x 6½" Fabric B strip. Press. Repeat to make a second B/C strip.



Sew the B/C strips to the top and bottom of the block from Step 1. Press



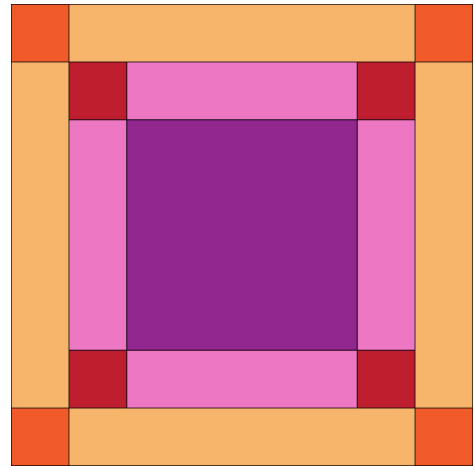
**Step 3:** Sew a 2" x 9½" Fabric D strip to either side of the block from Step 3. Press.



**Step 4:** Sew a 2" x 2" Fabric E square to both ends of a 2" x 9½" Fabric D strip. Press. Repeat to make a second D/E strip.



Sew the D/E strips to the top and bottom of the block from Step 3. Press



Repeat Steps 1-4 to make a second Block A.

## Block B

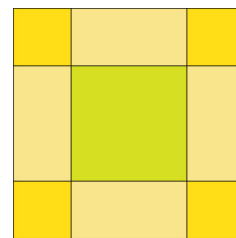
**Step 5:** Sew a 2" x 3½" Fabric F strip to either side of a 3½" x 3½" Fabric H square. Press



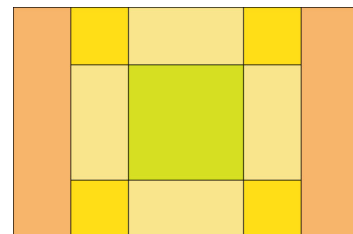
**Step 6:** Sew a 2" x 2" Fabric G square to both ends of a 2" x 3½" Fabric F strip. Press.



Sew the F/G strips to the top and bottom of the block from Step 5. Press



**Step 7:** Sew a 2" x 6½" Fabric D strip to either side of the block from Step 6. Press.

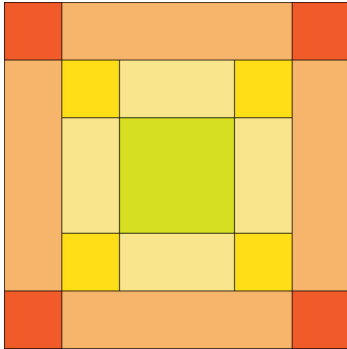


## Piecing Instructions

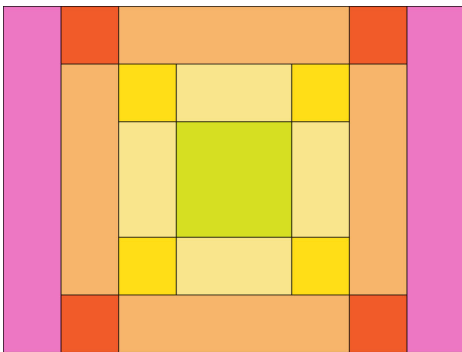
**Step 8:** Sew a 2" x 2" Fabric E square to both ends of a 2" x 6½" Fabric D strip. Press.



Sew the D/E strips to the top and bottom of the block from Step 7. Press



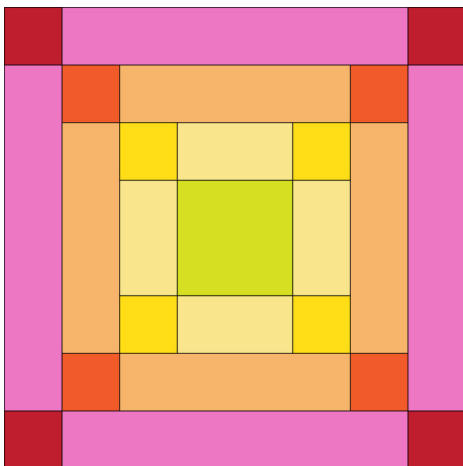
**Step 9:** Sew a 2" x 9½" Fabric B strip to either side of the block from step 8. Press.



**Step 10:** Sew a 2" x 2" Fabric C square to both ends of a 2" x 9½" Fabric B strip. Press.

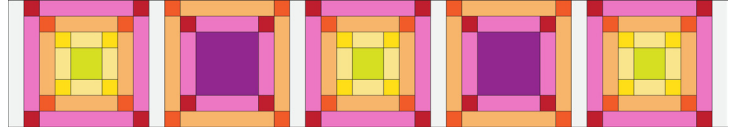


Sew the B/C strips to the top and bottom of the block from Step 9. Press.



**Step 11:** Sew the blocks together in the following order, placing a 2" x 12½" Fabric I sashing strip between each block and on either end, press:

I - Block B - I - Block A - I - Block B - I - Block A - I - Block B - I

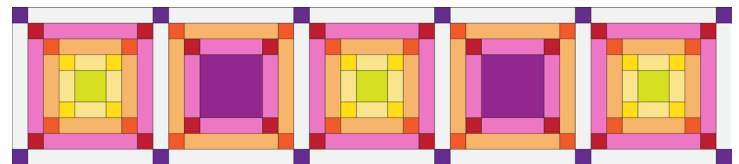


**Step 12:** Gather five 2" x 12½" Fabric I strips and six 2" x 2" Fabric J squares. Sew the strips together placing a 2" x 2" fabric J square between each strip and on either end. Press

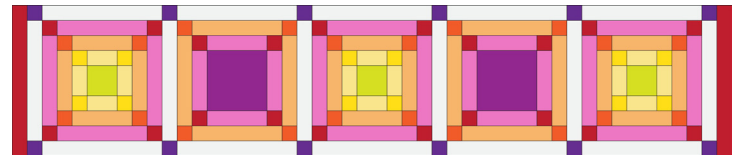


Repeat to make a second sashing row.

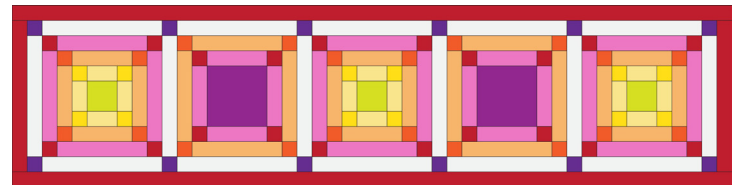
Sew the sashing rows to the top and bottom of the runner from Step 11. Press



**Step 13:** Sew the 2" x 15½" Fabric C side borders to the sides of the Runner. Press.

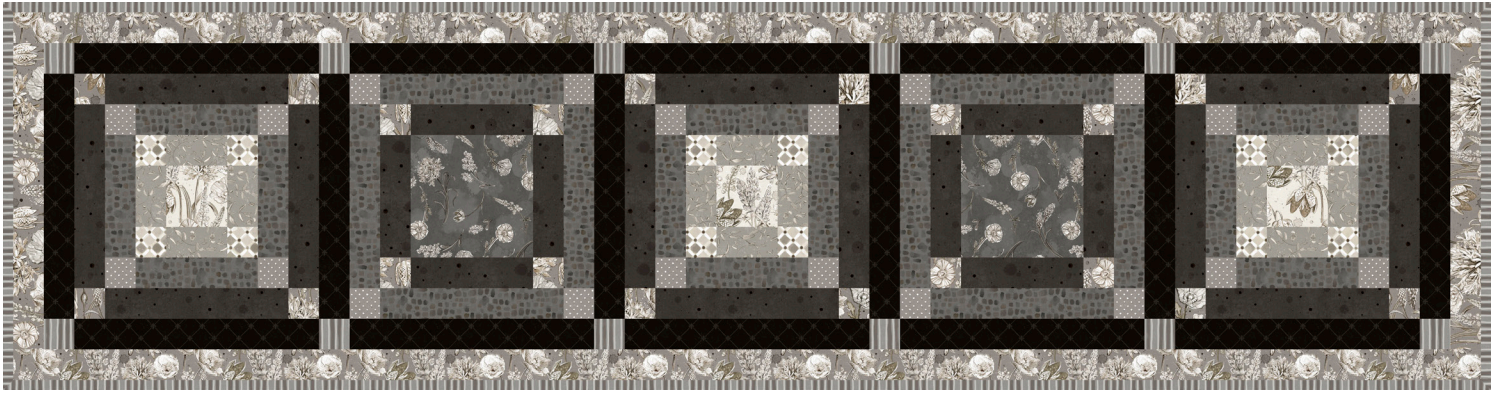


**Step 14:** Sew the 2" x 72½" Fabric C top and bottom borders to the top and bottom of the runner from Step 13.

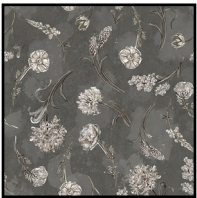


**Woohoo!** Your runner top is finished. Now, quilt and bind using your preferred method.

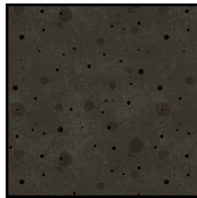
# Botanical Sketchbook



## Fabric Guide



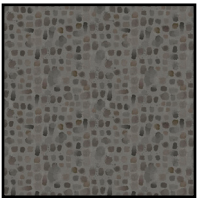
**Fabric A**  
W115-018-707  
Fat Eighth



**Fabric B**  
W115-025-777  
 $\frac{1}{3}$  yard



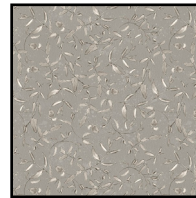
**Fabric C**  
W115-016-770  
 $\frac{3}{8}$  yard



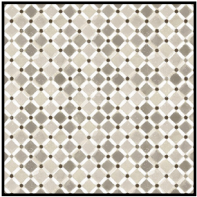
**Fabric D**  
W115-019-707  
 $\frac{1}{4}$  yard



**Fabric E**  
W115-022-707  
 $\frac{1}{8}$  yard



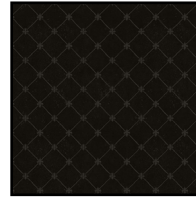
**Fabric F**  
W115-020-700  
 $\frac{1}{8}$  yard



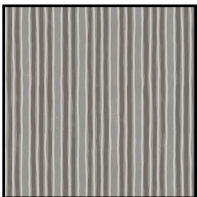
**Fabric G**  
W115-021-007  
 $\frac{1}{8}$  yard



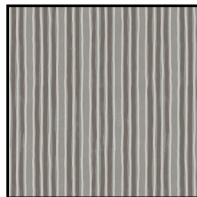
**Fabric H**  
W115-016-070  
 $\frac{1}{8}$  yard



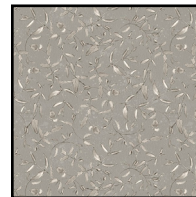
**Fabric I**  
W115-023-777  
 $\frac{3}{8}$  yard



**Fabric J**  
W115-024-777  
 $\frac{1}{8}$  yard



**Binding\***  
W115-024-777  
 $\frac{3}{8}$  yard



**Suggested Backing\*\***  
W115-020-700  
 $1\frac{1}{2}$  yards

\*Also used as Fabric J  
\*\*Also used as Fabric F

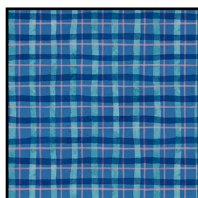
# Petal Whispers



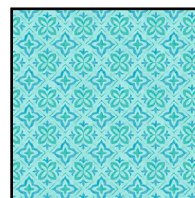
## Fabric Guide



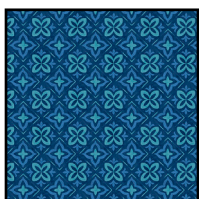
**Fabric A**  
W110-015-519  
Fat Eighth



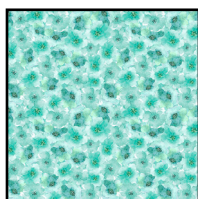
**Fabric B**  
W110-022-591  
 $\frac{1}{3}$  yard



**Fabric C**  
W110-021-995  
 $\frac{3}{8}$  yard



**Fabric D**  
W110-021-595  
 $\frac{1}{4}$  yard



**Fabric E**  
W110-018-999  
 $\frac{1}{8}$  yard



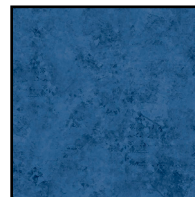
**Fabric F**  
W110-020-555  
 $\frac{1}{8}$  yard



**Fabric G**  
W110-019-909  
 $\frac{1}{8}$  yard



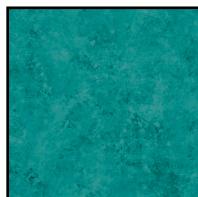
**Fabric H**  
W110-016-996  
 $\frac{1}{8}$  yard



**Fabric I**  
W110-023-555  
 $\frac{3}{8}$  yard



**Fabric J**  
W110-023-999  
 $\frac{1}{8}$  yard



**Binding\***  
W110-023-999  
 $\frac{3}{8}$  yard



**Suggested Backing\*\***  
W110-016-996  
1½ yards

\*Also used as Fabric J  
\*Also used as Fabric H