

Radiant Placemats

by Elise Lea for White Owl Textiles

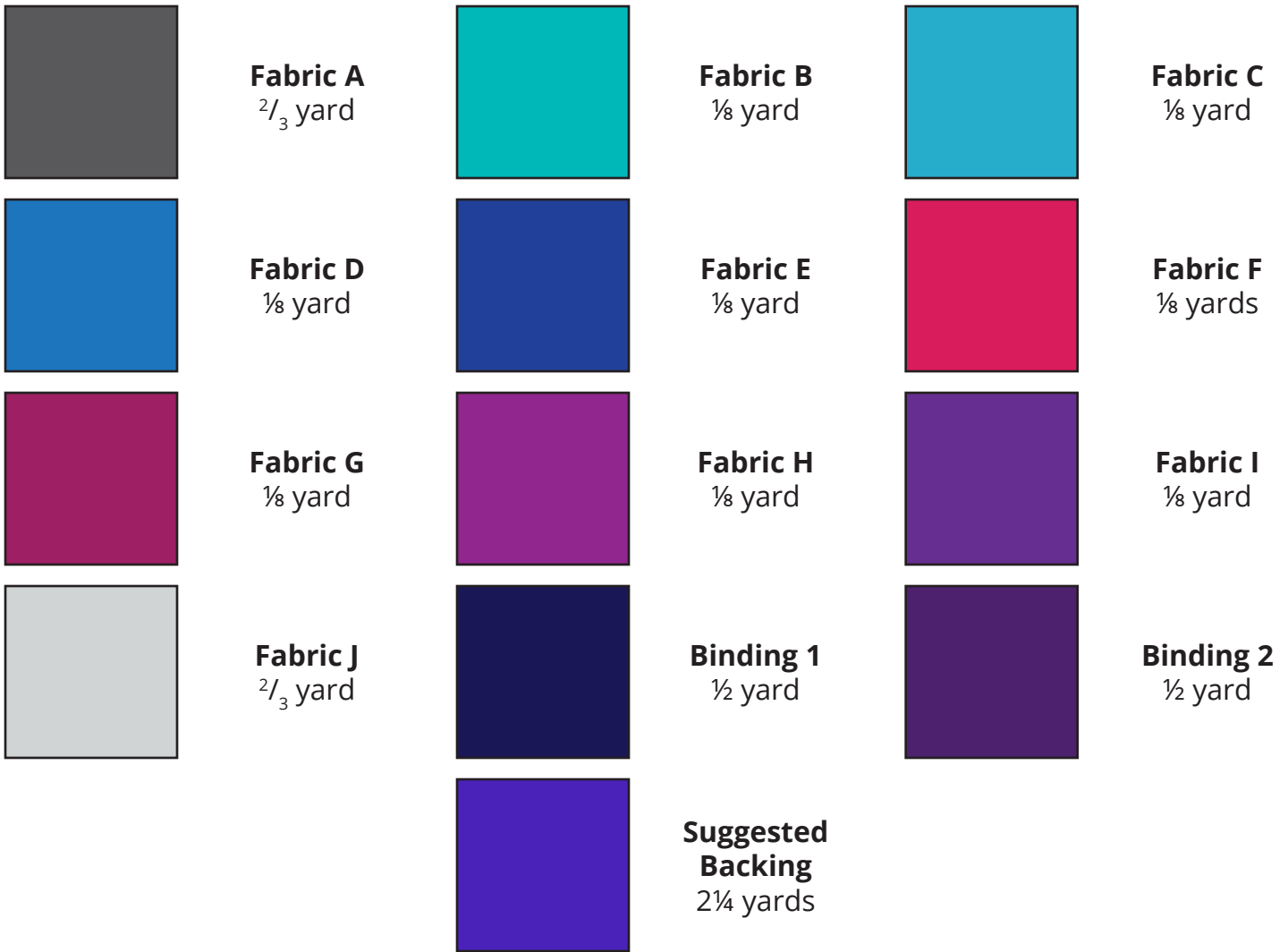
Finished size: 18" x 13"



Colorstory shown on page 3



Fabric Guide



Kindly note, our free patterns are not to be sold nor hosted on any other websites. We appreciate your understanding.

All seam allowances are 1/4" unless otherwise stated.
Press seams open unless otherwise stated.

WOF = Width of Fabric (selvage to selvage)

Cutting Instructions

Fabric A	Fussy cut six 11" x 11" squares
Fabrics B - I	Cut one strip 2 1/2" x WOF - subcut six 2 1/2" x 4 1/2" strips
Fabric J	Cut fourteen strips 1 1/2" x WOF - subcut <ul style="list-style-type: none"> • eighteen 1 1/2" x 4 1/2" strips for accent sashing • eighteen 1 1/2" x 11 1/2" strips for vertical sashing and side borders • twelve 1 1/2" x 18 1/2" strips for top and bottom borders
Binding 1 & 2	Cut four strips 2 1/2" x WOF

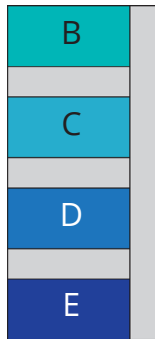
Piecing Instructions

Step 1: Sew a 1½" x 11½" Fabric J strip to both side of an 11½" x 11½" Fabric A square. Press. Repeat for all Fabric A squares.



Step 2: Gather the following pieces and sew them together in the order shown. Press.

- one 2½" x 4½" Fabric B strip
- one 2½" x 4½" Fabric C strip
- one 2½" x 4½" Fabric D strip
- one 2½" x 4½" Fabric E strip
- four 1½" x 4½" Fabric J strips

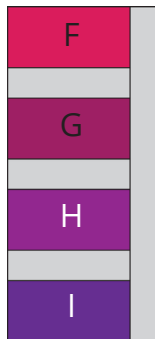


Sew a 1½" x 11½" Fabric J strip to the side. Press.

Repeat to make 3 sets for placemat A.

Step 3: Gather the following pieces and sew them together in the order shown. Press.

- one 2½" x 4½" Fabric F strip
- one 2½" x 4½" Fabric G strip
- one 2½" x 4½" Fabric H strip
- one 2½" x 4½" Fabric I strip
- four 1½" x 4½" Fabric J strips



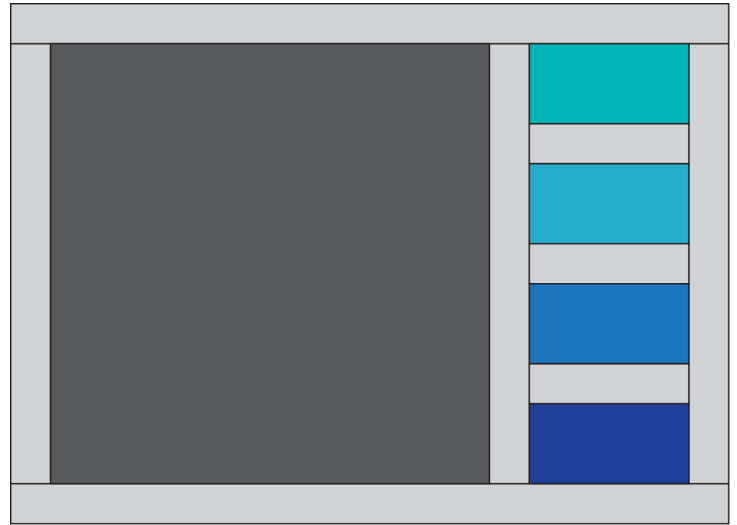
Sew a 1½" x 11½" Fabric J strip to the side. Press.

Repeat to make 3 sets for placemat B.

Step 4: Sew a Block from Step 1 to the right side of a placemat A block from Step 2. Press. Repeat for remaining placemat A blocks. Repeat for placemat B blocks from Step 3.



Step 5: Sew a 1½" x 18½" Fabric J strip to the top and bottom of a placemat from Step 4. Press. Repeat for all remaining placemats.



Woohoo! Your placemats are finished. Now, quilt and bind using your preferred method. We bound half with Binding 1 and half with Binding 2 but you could also bind them all in the same binding.

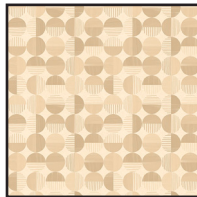
Paddle & Pine



Fabric Guide



Fabric A
W135-021-053
2/3 yard



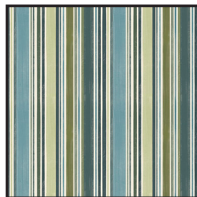
Fabrics B
W135-028-000
1/8 yard



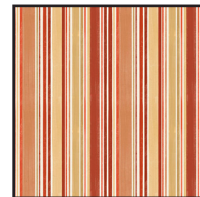
Fabric C
W135-024-035
1/8 yard



Fabric D
W135-025-660
1/8 yard



Fabric E
W135-029-565
1/8 yard



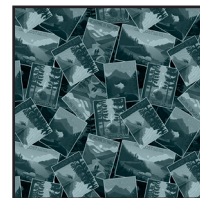
Fabric F
W135-029-323
1/8 yards



Fabric G
W135-025-000
1/8 yard



Fabric H
W135-028-052
1/8 yard



Fabric I
W135-024-555
1/8 yard



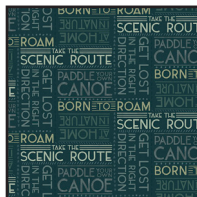
Fabric J
EC-585 Navy
2/3 yard



Binding 1
W135-026-555
1/2 yard



Binding 2
W135-026-662
1/2 yard



Suggested Backing
W135-027-556
2 1/4 yards