

Framework Wall Hanging

by Heather Seth for White Owl Textiles
Winter 2025

Difficulty: Beginner



Fairy Boutique (39" x 66") - Page 3

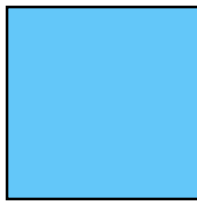


Botanical Sketchbook (39" x 65½") - Page 4

Fabric Guide



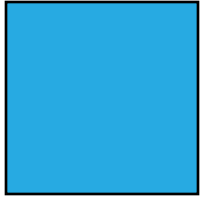
Fabric A (Panel)
1 yard



Fabric B (Stripe)
1 1/8 yards



Fabric C
5/8 yard



Binding
1/2 yard



Backing
2 5/8 yards

Kindly note, our free patterns are not to be sold nor hosted on any other websites. We appreciate your understanding.

All seam allowances are 1/4" unless otherwise stated.
Press seams open unless otherwise stated.

WOF = Width of Fabric (selvage to selvage)
LOF = Length of Fabric

Cutting Instructions

Note: refer to the colorstory pages at the end for each sample projects cutting measurements.

Fabric A	See colorstories on pages 3-4 for panel cut size
Fabric B	See colorstories on pages 3-4 for stripe cut size
Fabric C	<p>Cut 8 strips 2 1/2" x WOF (7 strips may only be needed depending on the size pf the stripe fabric cut.</p> <ul style="list-style-type: none"> • Top and bottom panel borders <ul style="list-style-type: none"> • Trim two strips down to 2 1/2" x 35 1/2" • Top and bottom outer borders <ul style="list-style-type: none"> • Trim two strips down to 2 1/2" x 39 1/2" • Side outer borders <ul style="list-style-type: none"> • See colorstories on pages 3-4 for side outer borders
Binding	Cut 6 strips 2 1/2" x WOF

Assembly Instructions

Step 1: Sew Fabric C top and bottom panel borders to the top and bottom of the panel. Press towards Fabric C.

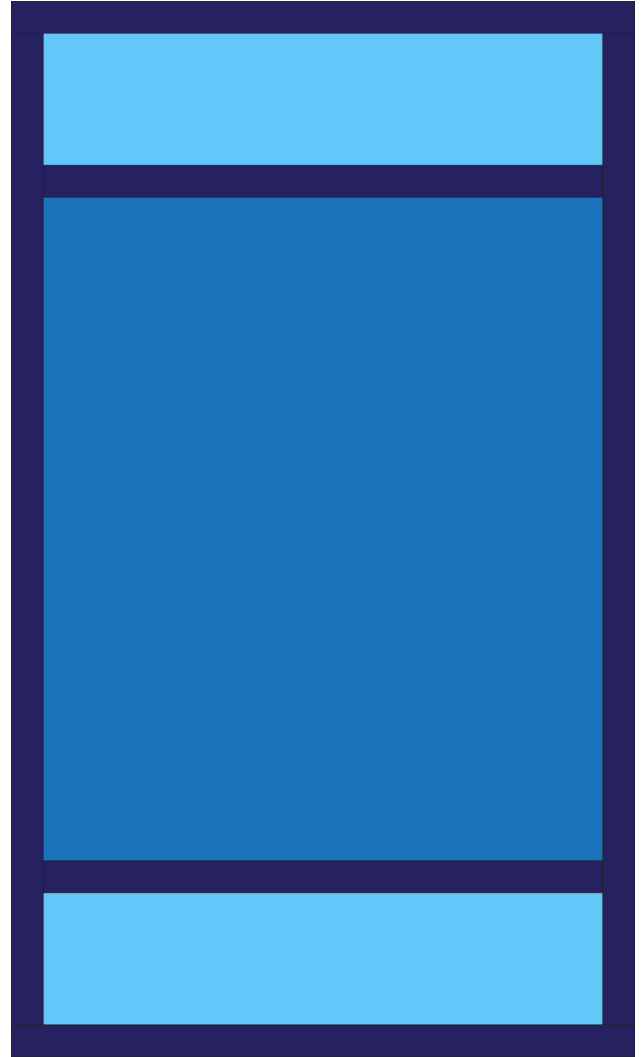


Step 2: Sew Fabric B strips to the top and bottom of panel from step 2. Press towards Fabric C.



Step 3: Sew the Fabric C side outer borders to the sides of the quilt top from Step 2. Press towards Fabric C outer borders.

Step 4: Sew the Fabric C top and bottom outer borders to the top and bottom of the quilt top from Step 3. Press towards Fabric C outer borders.



Woohoo! Your quilt top is now finished. Now, quilt and bind it using your preferred method.

Fairy Boutique



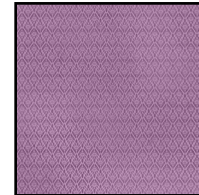
Fabric Guide



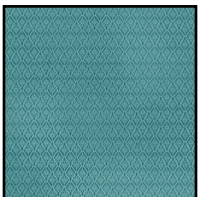
Fabric A (Panel)
W130-025-406
1 yard



Fabric B (Stripe)
W130-026-960
1 $\frac{1}{8}$ yards



Fabric C
W130-035-435
 $\frac{5}{8}$ yard



Binding
W130-035-960
 $\frac{1}{2}$ yard



Suggested Backing
W130-032-800
2 $\frac{5}{8}$ yards

Kindly note, our free patterns are not to be sold nor hosted on any other websites. We appreciate your understanding.

All seam allowances are $\frac{1}{4}$ " unless otherwise stated.
Press seams open unless otherwise stated.

WOF = Width of Fabric (selvage to selvage)
LOF = Length of Fabric

Cutting Instructions

Fabric A	Fussy cut panel to 35 $\frac{1}{2}$ " x 42"
Fabric B	Fussy cut two stripe sections your 8 $\frac{3}{4}$ " x LOF - Trim each strip to 35 $\frac{1}{2}$ " wide.
Fabric C	Side outer borders <ul style="list-style-type: none"> Sew three strips together end-to-end to create one long strip. From the resulting strip cut 2 strips 2$\frac{1}{2}$" x 62$\frac{1}{2}$"

Botanical Sketchbook



Fabric Guide



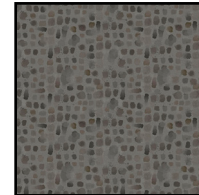
Fabric A (Panel)

W115-014-020
1 yard



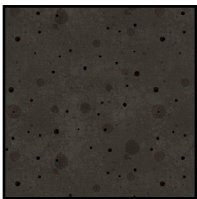
Fabric B (Stripe)

W115-015-077
1 1/8 yards



Fabric C

W115-019-707
5/8 yard



Binding

W115-025-777
1/2 yard



Suggested Backing

W115-020-770
2 5/8 yards

Kindly note, our free patterns are not to be sold nor hosted on any other websites. We appreciate your understanding.

All seam allowances are 1/4" unless otherwise stated.
Press seams open unless otherwise stated.

WOF = Width of Fabric (selvage to selvage)
LOF = Length of Fabric

Cutting Instructions

Fabric A	Fussy cut panel to 35 1/2" x 41 1/2"
Fabric B	Fussy cut two stripe sections your 8 3/4" x LOF - Trim each strip to 35 1/2" wide.
Fabric C	Side outer borders <ul style="list-style-type: none"> Sew four strips together end-to-end to create one long strip. From the resulting strip cut 2 strips 2 1/2" x 62"