

Framework Wall Hanging

by Heather Seth for White Owl Textiles
Winter 2025

Difficulty: Beginner



Curiouser & Curiouser (39" x 58½") - Page 3



Botanical Sketchbook (27" x 61½") - Page 4

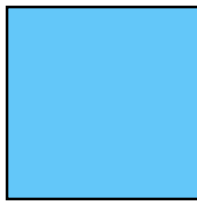


Botanical Sketchbook (27" x 61½") - Page 4

Fabric Guide



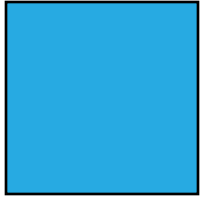
Fabric A (Panel)
 $\frac{2}{3}$ yard or
 1 yard



Fabric B (Stripe)*
 $\frac{7}{8}$ yard or
 1 $\frac{1}{8}$ yards



Fabric C
 $\frac{5}{8}$ yard



Binding*
 $\frac{3}{8}$ yard or
 $\frac{1}{2}$ yard



Backing*
 2 yards or
 2 $\frac{5}{8}$ yards

**See Colorstories at the back of pattern for exact requirements based on panel size.*

Kindly note, our free patterns are not to be sold nor hosted on any other websites. We appreciate your understanding.

All seam allowances are $\frac{1}{4}$ " unless otherwise stated.
 Press seams open unless otherwise stated.

WOF = Width of Fabric (selvage to selvage)
 LOF = Length of Fabric

Cutting Instructions

Note: refer to the colorstory pages at the end for each sample projects cutting measurements.

Fabric A	See colorstories on pages 3-4 for panel cut size
Fabric B	See colorstories on pages 3-4 for stripe cut size
Fabric C	<p>Cut 8 strips $2 \frac{1}{2}$" x WOF (7 strips may only be needed depending on the size of the stripe fabric cut.)</p> <p>If panel is 36" wide:</p> <ul style="list-style-type: none"> • Top and bottom panel borders <ul style="list-style-type: none"> • Trim two strips down to $2 \frac{1}{2}$" x $35 \frac{1}{2}$" or $2 \frac{1}{2}$" x $23 \frac{1}{2}$" • Top and bottom outer borders <ul style="list-style-type: none"> • Trim two strips down to $2 \frac{1}{2}$" x $39 \frac{1}{2}$" • Side outer borders <ul style="list-style-type: none"> • See colorstories on pages 3-4 for side outer borders <p>If panel is 24" wide:</p> <ul style="list-style-type: none"> • Top and bottom panel borders <ul style="list-style-type: none"> • Trim two strips down to $2 \frac{1}{2}$" x $23 \frac{1}{2}$" • Top and bottom outer borders <ul style="list-style-type: none"> • Trim two strips down to $2 \frac{1}{2}$" x $27 \frac{1}{2}$" • Side outer borders <ul style="list-style-type: none"> • See colorstories on pages 3-4 for side outer borders
Binding	Cut 6 strips $2 \frac{1}{2}$ " x WOF

Assembly Instructions

Step 1: Sew Fabric C top and bottom panel borders to the top and bottom of the panel. Press towards Fabric C.

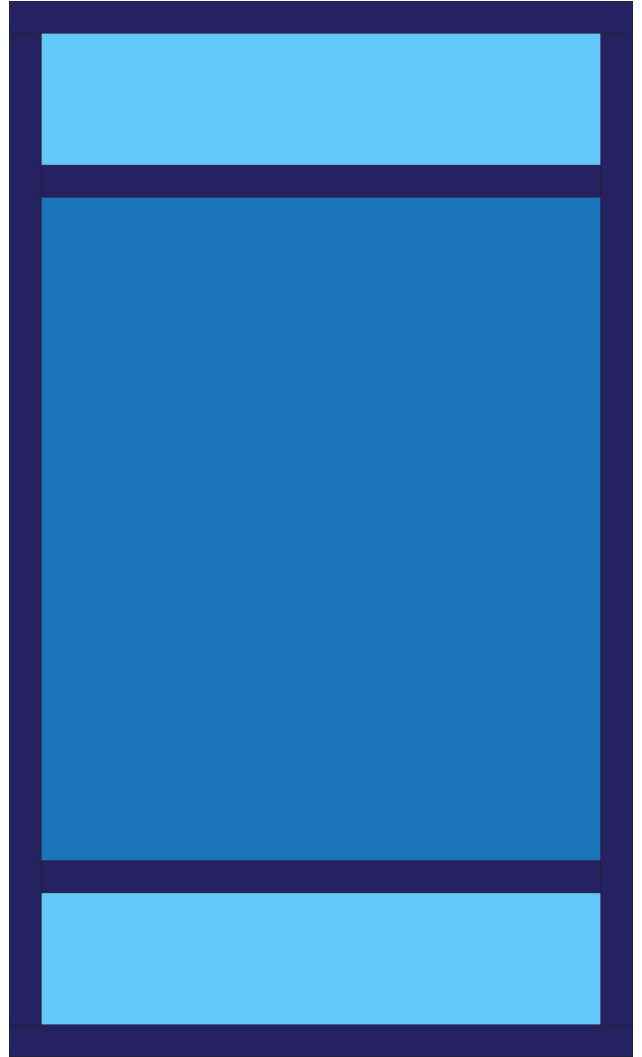


Step 2: Sew Fabric B strips to the top and bottom of panel from step 2. Press towards Fabric C.



Step 3: Sew the Fabric C side outer borders to the sides of the quilt top from Step 2. Press towards Fabric C outer borders.

Step 4: Sew the Fabric C top and bottom outer borders to the top and bottom of the quilt top from Step 3. Press towards Fabric C outer borders.



Woohoo! Your quilt top is now finished. Now, quilt and bind it using your preferred method.

Curiouser & Curiouser



Fabric Guide



Fabric A (Panel)

W130-036-953
1 yard



Fabric B (Stripe)

W130-037-951
1 1/8 yards



Fabric C

W130-039-555
5/8 yard



Binding

W130-044-999
1/2 yard



Suggested Backing

W130-040-159
2 5/8 yards

Kindly note, our free patterns are not to be sold nor hosted on any other websites. We appreciate your understanding.

All seam allowances are 1/4" unless otherwise stated.
Press seams open unless otherwise stated.

WOF = Width of Fabric (selvage to selvage)
LOF = Length of Fabric

Cutting Instructions

Fabric A	Fussy cut panel to 35 1/2" x 42"
Fabric B	Fussy cut two stripe sections your 5" x LOF - Trim each strip to 35 1/2" wide.
Fabric C	Side outer borders <ul style="list-style-type: none"> Sew three strips together end-to-end to create one long strip. From the resulting strip cut 2 strips 2 1/2" x 55"

Meadowbrook Mist



Fabric Guide



Fabric A (Panel)

W115-026-765
 $\frac{2}{3}$ yard



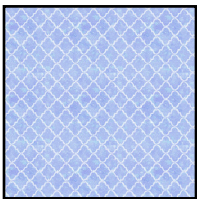
Fabric B (Stripe)

W115-027-965
 $\frac{7}{8}$ yard



Fabric C

W115-032-991
 $\frac{5}{8}$ yard



Binding

W115-033-717
 $\frac{3}{8}$ yard



Suggested Backing

W115-029-758
 2 yards

Kindly note, our free patterns are not to be sold nor hosted on any other websites. We appreciate your understanding.

All seam allowances are $\frac{1}{4}$ " unless otherwise stated.
 Press seams open unless otherwise stated.

WOF = Width of Fabric (selvage to selvage)
 LOF = Length of Fabric

Cutting Instructions

Fabric A	Fussy cut panel to 23½" x 42"
Fabric B	Fussy cut two stripe sections your 6½" x LOF - Trim each strip to 23½" wide.
Fabric C	Side outer borders <ul style="list-style-type: none"> Sew three strips together end-to-end to create one long strip. From the resulting strip cut 2 strips 2½" x 58"

Woodland Lullaby



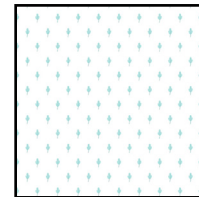
Fabric Guide



Fabric A (Panel)
W190-001-742
 $\frac{2}{3}$ yard



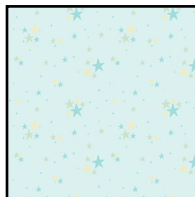
Fabric B (Stripe)
W190-002-729
 $\frac{7}{8}$ yard



Fabric C
W190-009-177
 $\frac{5}{8}$ yard



Binding
W190-010-777
 $\frac{3}{8}$ yard



Suggested Backing
W190-008-773
2 yards

Kindly note, our free patterns are not to be sold nor hosted on any other websites. We appreciate your understanding.

All seam allowances are $\frac{1}{4}$ " unless otherwise stated.
Press seams open unless otherwise stated.

WOF = Width of Fabric (selvage to selvage)
LOF = Length of Fabric

Cutting Instructions

Fabric A	Fussy cut panel to 23½" x 42"
Fabric B	Fussy cut two stripe sections your 6½" x LOF - Trim each strip to 23½" wide.
Fabric C	Side outer borders <ul style="list-style-type: none"> Sew three strips together end-to-end to create one long strip. From the resulting strip cut 2 strips 2½" x 58"