

Whirl

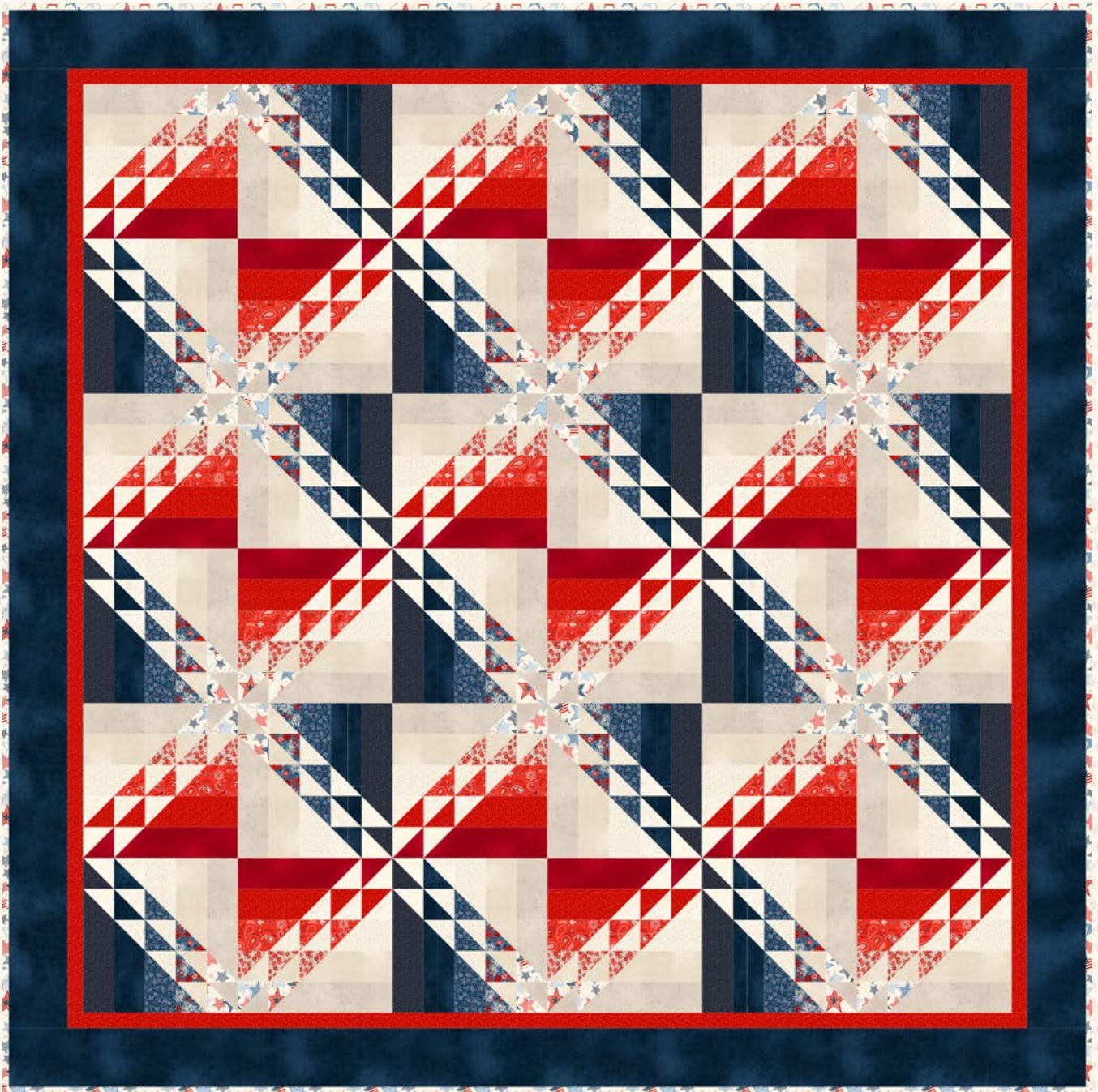
by Elise Lea for White Owl Textiles

Finished size: 70" x 70"

Featuring

Stripes and Stars

Difficulty: Confident Beginner



Fabric Guide



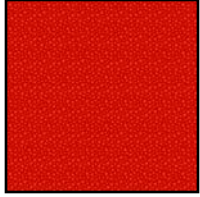
Fabric A
W130-001-355
½ yard



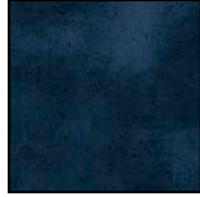
Fabric B
W140-009-590
½ yards



Fabric C
W130-001-049
⅞ yard



Fabric D
W140-009-360
¾ yard



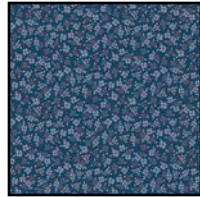
Fabric E
W130-001-595
1⅓ yard



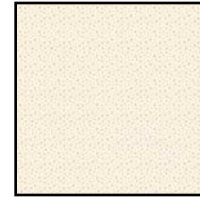
Fabric F
W130-001-017
¾ yard



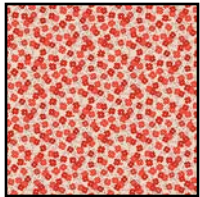
Fabric G
W140-007-303
⅓ yard



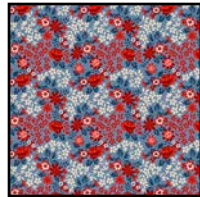
Fabric H
W140-008-553
⅓ yards



Fabric I
W140-009-025
⅔ yard



Fabric J
W140-008-030
⅓ yard



Fabric K
W140-006-535
⅓ yard



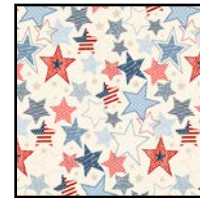
Fabric L
W140-007-025
½ yard



Fabric M
W140-005-035
⅓ yard



Fabric N
W110-002-001
⅓ yard



Binding*
W140-005-035
⅝ yard



Suggested Backing
W140-004-535
4⅓ yards

*Backing is also used as Fabric D

Kindly note, our free patterns are not to be sold nor hosted on any other websites. We appreciate your understanding.

All seam allowances are ¼" unless otherwise stated.
WOF = Width of Fabric (selvage to selvage)

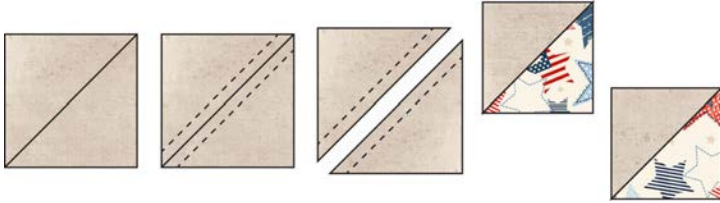
Press seams open unless otherwise stated.
RST = Right Sides Together

Cutting Instructions

Fabric A & B	Cut 5 strips 2½" x WOF - subcut 18 strips 2½" x 8½" Cut 1 strip 3" x WOF - subcut 9 squares 3" x 3"
Fabric C	Cut 9 strips 2½" x WOF - subcut 36 strips 2½" x 8½" Cut 2 strips 3" x WOF - subcut 18 squares 3" x 3"
Fabric D	Cut 7 strips 1½" x WOF for inner border Cut 3 strips 2½" x WOF - subcut 18 strips 2½" x 6½" Cut 2 strips 3" x WOF - subcut 18 squares 3" x 3"
Fabric E	Cut 3 strips 2½" x WOF - subcut 18 strips 2½" x 6½" Cut 2 strips 3" x WOF - subcut 18 squares 3" x 3" Cut 7 strips 4½" x WOF for outer border
Fabric F	Cut 6 strips 2½" x WOF - subcut 36 strips 2½" x 6½" Cut 3 strips 3" x WOF - subcut 36 squares 3" x 3"
Fabrics G & H	Cut 3 strips 2½" x WOF - subcut 18 strips 2½" x 4½" and 16 squares 2½" x 2½" Cut 1 strip 3" x WOF - subcut 9 squares 3" x 3" - trim remainder of strip down to 2½" and cut 2 more 2½" squares
Fabric I	Cut 6 strips 2½" x WOF - subcut 36 strips 2½" x 4½" & 32 squares 2½" x 2½" Cut 2 strips 3" x WOF - subcut 18 squares 3" x 3" - trim remainder of strip down to 2½" and cut 4 more 2½" squares
Fabrics J & K	Cut 2 strips 2½" x WOF - subcut 18 squares 2½" x 2½" Cut 2 strips 3" x WOF - subcut 18 squares 3" x 3"
Fabric L	Cut 2 strips 2½" x WOF - subcut 32 squares 2½" x 2½" Cut 3 strips 3" x WOF - subcut 36 squares 3" x 3" - trim remainder of strip down to 2½" and cut 4 more 2½" squares
Fabric M	Cut 2 strips 2½" x WOF - subcut 32 squares 2½" x 2½" Cut 2 strips 3" x WOF - subcut 18 squares 3" x 3" - trim remainder of strip down to 2½" and cut 4 more 2½" squares
Fabric N	Cut 2 strips 2½" x WOF - subcut 32 squares 2½" x 2½" Cut 2 strips 3" x WOF - subcut 18 squares 3" x 3" - trim remainder of strip down to 2½" and cut 4 more 2½" squares
Binding	Cut 7 strips 2½" x WOF

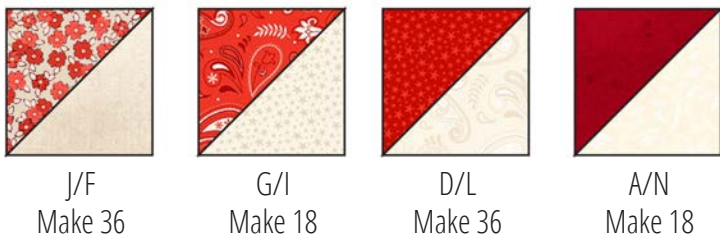
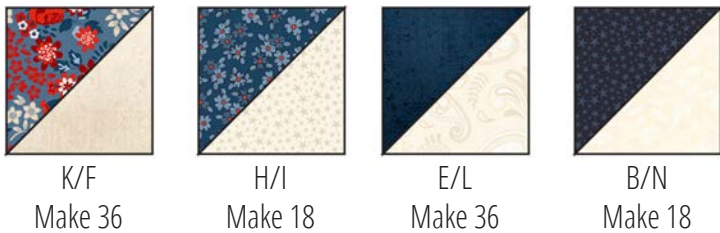
Piecing Instructions

Step 1: Draw a diagonal line on the wrong side of a 3" x 3" Fabric C square. Place right sides together with a Fabric M square and sew a scant ¼" away from both sides of the line. Cut apart on the drawn line to make 2 C/M HSTs and press open Trim to 2½" x 2½".

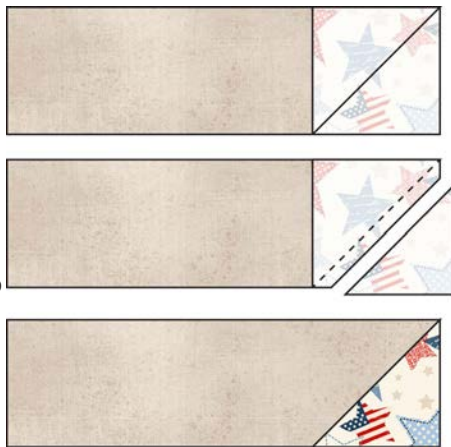


Repeat to make 36 C/M HSTs.

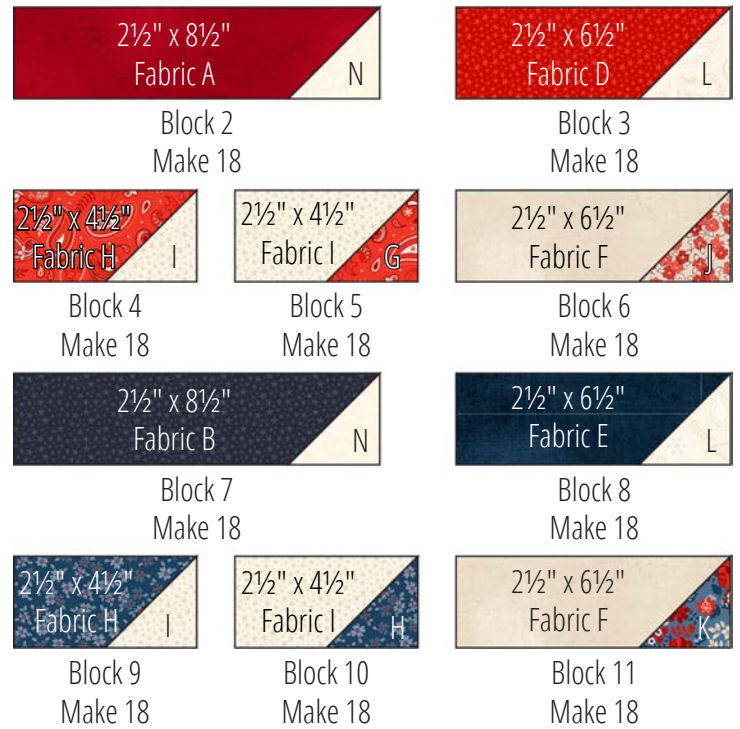
Step 2: Repeat Step 1 to make the following blocks:



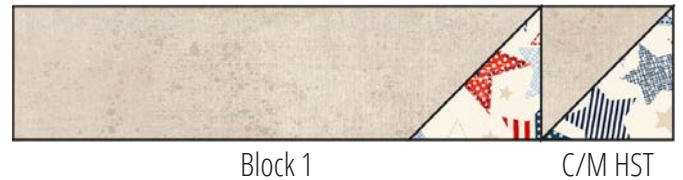
Step 3: Draw a diagonal line on the wrong side of a 2½" x 2½" Fabric M square. Place right sides together with a 2½" x 8½" Fabric C strip, noting the placement and orientation of the square. Sew on the drawn line and trim off excess ¼" away from the stitched line. Open and press. Repeat to make a total of 36 Block 1.



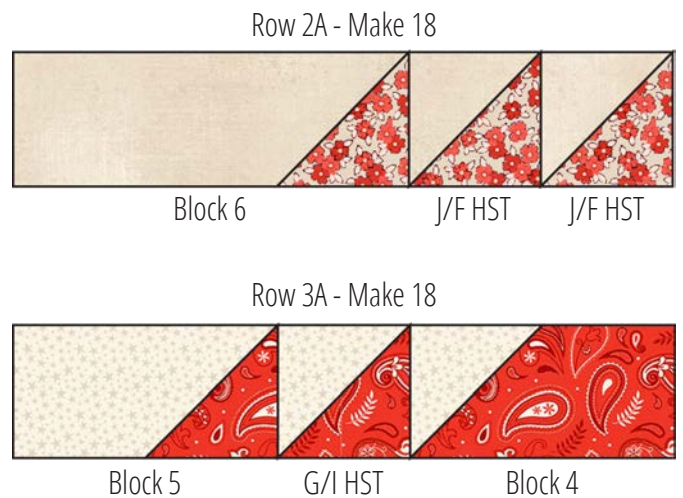
Step 4: Repeat Step 1 with the following pieces to make the blocks shown:



Step 5: To make a Row 1, sew a C/M HST to the end of a Block 1 as shown, paying attention to orientation of the pieces. Press. Repeat to make 36 Row 1.



Step 6: In a similar manner make the following rows using the blocks listed.



Piecing Instructions Continued

Row 4A - Make 18



D/L HST D/L HST Block 3

Row 5A - Make 18



A/N HST Block 2

Row 2B - Make 18



Block 11 K/F HST K/F HST

Row 3B - Make 18



Block 10 H/I HST Block 9

Row 4B - Make 18



E/L HST E/L HST Block 8

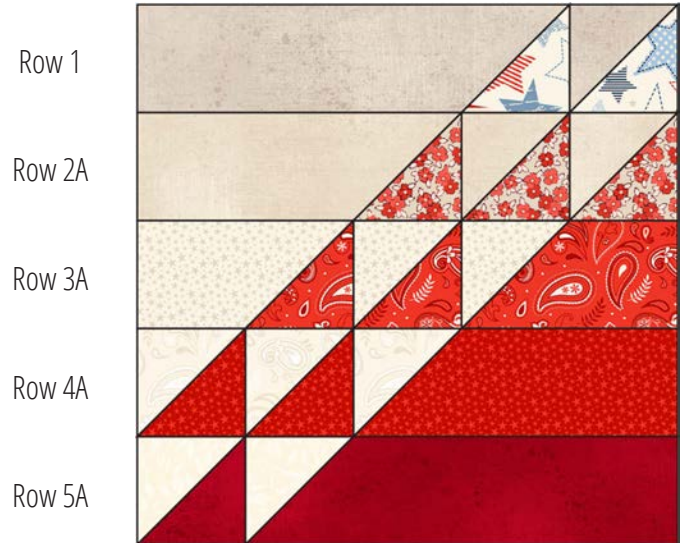
Row 5B - Make 18



B/N HST Block 7

Step 7: To make Block A, gather the following: Row 1, Row 2A, Row 3A, Row 4A, and Row 5A.

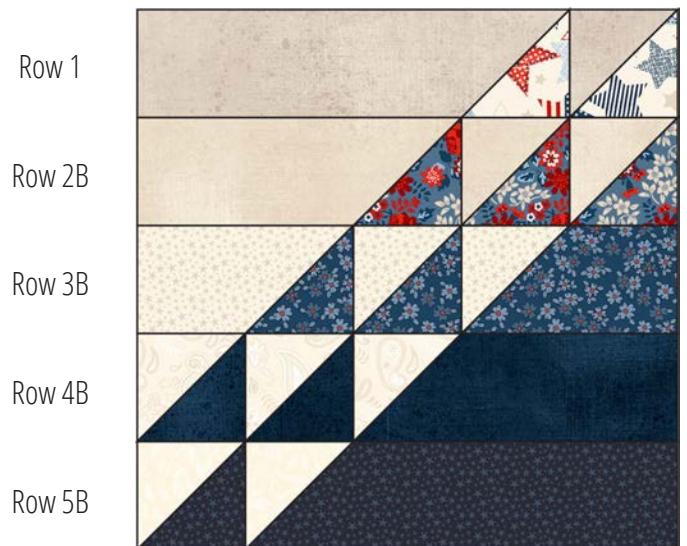
Sew the Rows together as shown (noting placement and orientation) and press.



Repeat to make a total of 18 Block A.

Step 8: To make Block B, gather the following: Row 1, Row 2B, Row 3B, Row 4B, and Row 5B.

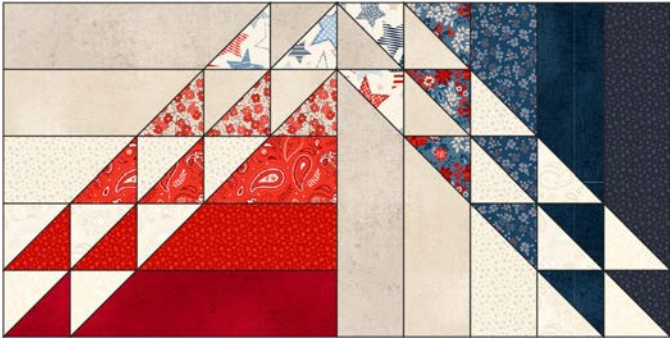
Sew the Rows together as shown (noting placement and orientation) and press.



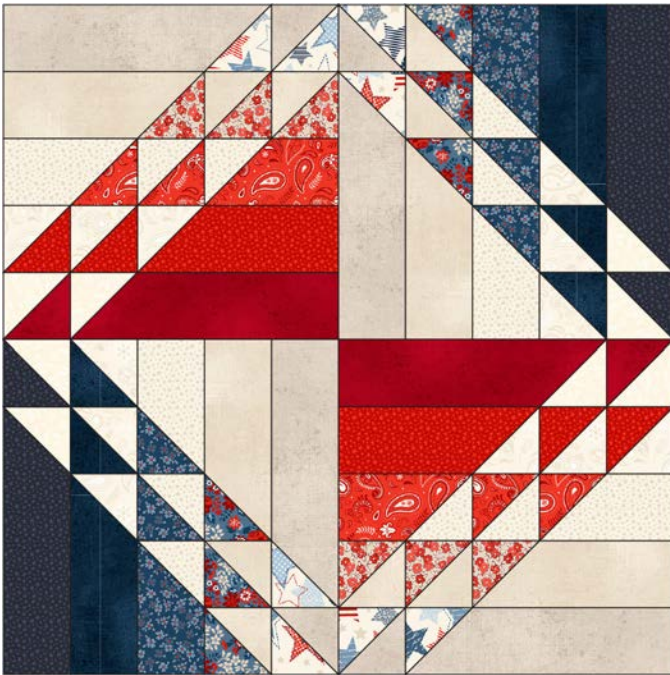
Repeat to make a total of 18 Block B.

Assembly Instructions

Step 9: Sew a Block A to a Block B as shown paying attention to orientation of the blocks. Press. Repeat to make a total of 18 AB Blocks.



Step 10: Sew together two AB Blocks from Step 9 as shown, paying attention to the orientation of the blocks. Press. Repeat to make a total of 9 Blocks.



Step 11: Sew three blocks from Step 10 together as shown, again paying attention to orientation. Press. Repeat to make a total of 3 rows.



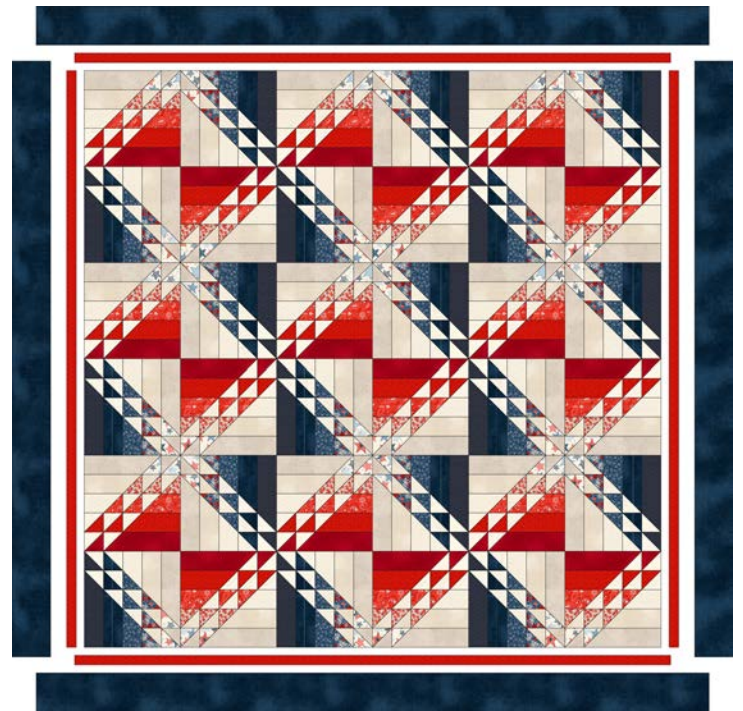
Step 12: Sew the rows together (refer to diagram below if needed). Press.

Step 13: Sew the 1½" Fabric D inner border strips together end-to-end. Press. Cut two strips 1½" x 60½" for side inner borders and two strips 1½" x 62½" for top and bottom inner borders.

Step 14: Sew the side inner borders to sides of the quilt top. Press. Sew the top and bottom inner borders to the top and bottom of the quilt top. Press.

Step 15: Sew the 4½" Fabric E outer border strips together end-to-end. Press. Cut two strips 1½" x 62½" for side outer borders and two strips 1½" x 70½" for top and bottom outer borders.

Step 16: Sew the side outer borders to sides of the quilt top. Press. Sew the top and bottom outer borders to the top and bottom of the quilt top. Press.



Woohoo! Your quilt top is finished. Now, quilt and bind using your preferred method.