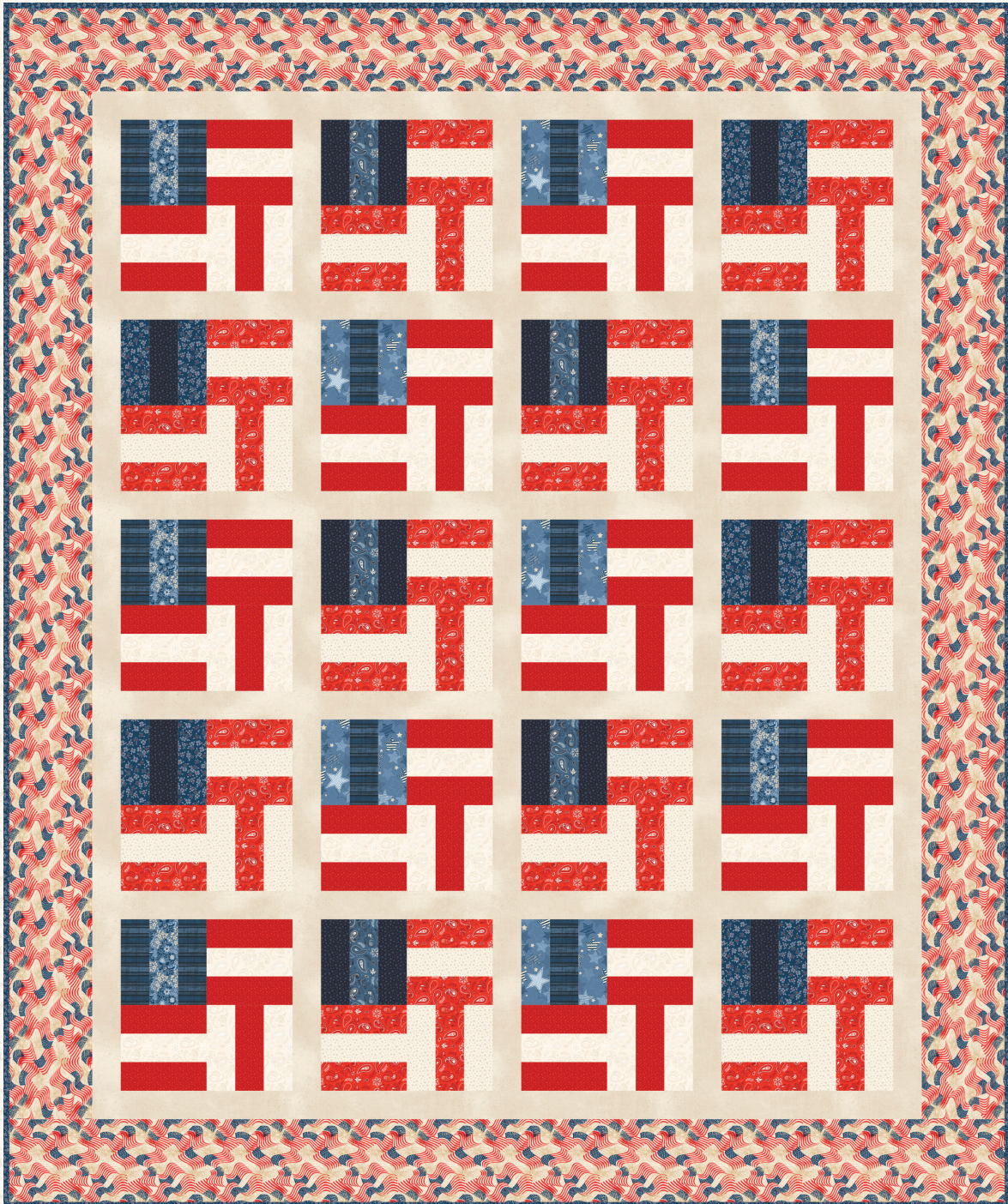


Four Patch Flag

by Elise Lea for White Owl Textiles

Featuring

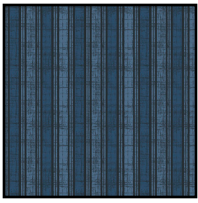
Stripes and Stars
by Jennifer Ellory



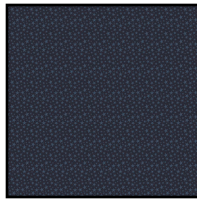
Finished size: 70" x 84"



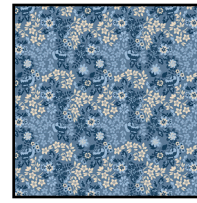
Fabric Guide



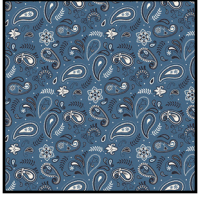
Fabric A
W140-010-575
¼ yard



Fabric B
W140-009-590
¼ yard



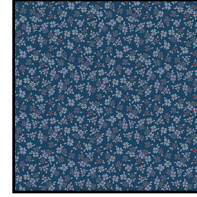
Fabric C
W140-006-550
⅛ yard



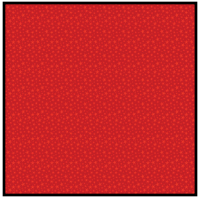
Fabric D
W140-007-505
⅛ yard



Fabric E
W140-005-555
¼ yard



Fabric F
W140-008-553
¼ yard



Fabric G
W140-009-360
¾ yard



Fabric H
W140-007-303
¾ yard



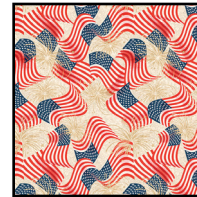
Fabric I
W140-007-025
⅝ yard



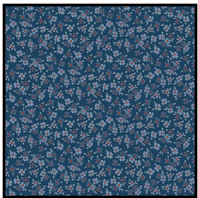
Fabric J
W140-009-025
⅝ yard



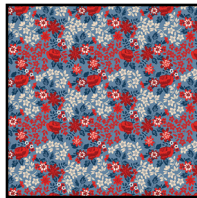
Fabric K
W130-001-017
1⅜ yards



Fabric L
W140-004-035
1½ yards



Binding*
W140-008-553
⅝ yard



Suggested Backing
W140-006-535
5⅝ yards

*Binding is also used as Fabric F

Kindly note, our free patterns are not to be sold nor hosted on any other websites. We appreciate your understanding.

All seam allowances are ¼" unless otherwise stated.
Press seams open unless otherwise stated.

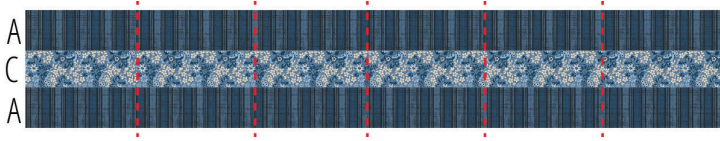
WOF = Width of Fabric (selvage to selvage)

Cutting Instructions

Fabrics A & B	Cut 3 strips 2½" x WOF
Fabrics C & D	Cut 1 strip 2½" x WOF
Fabrics E & F	Cut 2 strips 2½" x WOF
Fabrics G & H	Cut 10 strips 2½" x WOF
Fabrics I & J	Cut 8 strips 2½" x WOF
Fabric K	Cut 18 strips 2½" x WOF · from 5 strips subcut fifteen 2½" x 12½" strips
Fabric L	Cut 8 strips 6½" x WOF
Binding	Cut 8 strips 2½" x WOF

Piecing Instructions

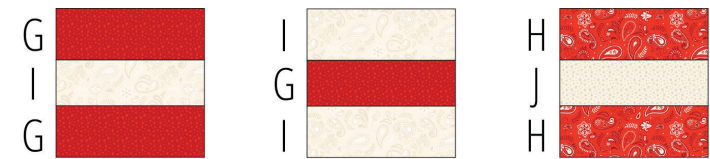
Step 1: Gather two 2½" x WOF Fabric A strips and one 2½" x WOF Fabric C strip. Sew them together in the following order to make a strip set: Fabric A - Fabric C - Fabric A. Press. Cut the strip set into five 6½" x 6½" squares. Discard any extra or save for another project.



Repeat with the following combinations, making the number of strip sets and Blocks indicated.



Make 1 Strip Sets Cut into 5 Blocks Make 1 Strip Sets Cut into 5 Blocks Make 1 Strip Sets Cut into 5 Blocks



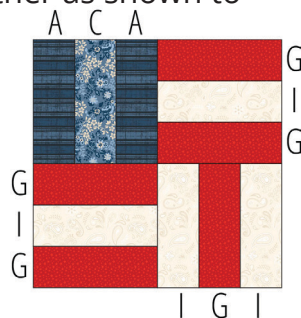
Make 4 Strip Sets Cut into 20 Blocks Make 2 Strip Sets Cut into 10 Blocks Make 4 Strip Sets Cut into 20 Blocks



Make 2 Strip Sets Cut into 10 Blocks

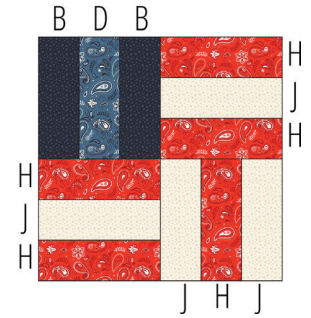
Step 2: Gather one ACA unit, two GIG units, and one IGI unit. Sew them together as shown to make Block 1, making sure to pay attention to block placement and direction. Press.

Repeat to make 5 blocks.



Step 3: In the same manner as Step 2, make 5 of each of the following blocks:

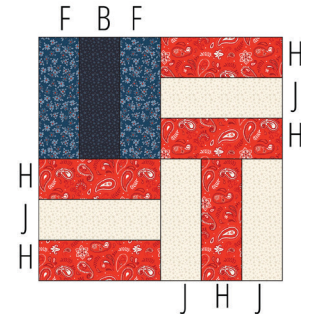
Block 2: one BDB Unit, two HJH units and one JHJ unit.



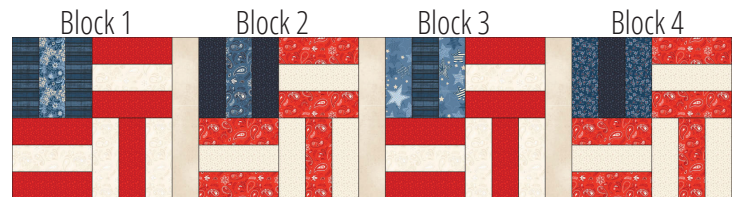
Block 3: one EAE Unit, two GIG units and one IGI unit.



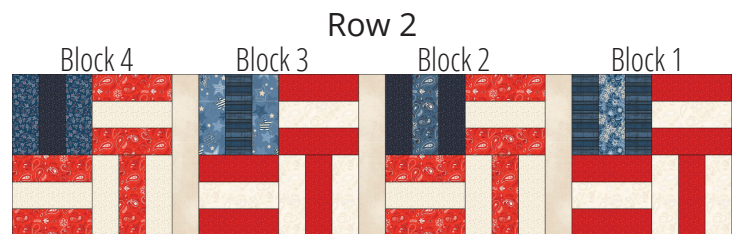
Block 4: one FBF Unit, two HJH units and one JHJ unit.



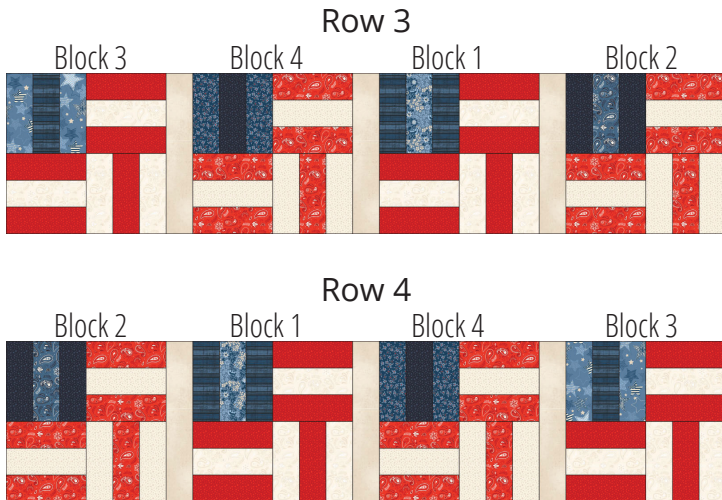
Step 4: Gather one of each Block 1-4 and sew them together in the following order placing a 2½" x 12½" Fabric K strip between each block. Press. Make a second Row 1.



Repeat to make one of each of the following rows:

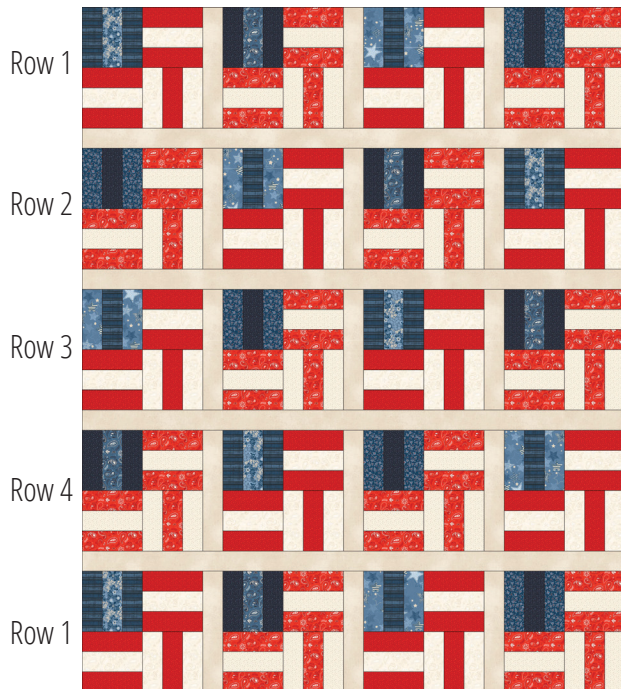


Piecing Instructions



Step 5: Sew three 2½" x WOF Fabric K strips together end-to-end to create one long strip. From resulting strip cut two sashing rows 2½" x 54½". Repeat to make a total of 6 sashing rows.

Step 6: Sew the rows together in the following order placing a sashing row between each block row:



Step 7: Sew three 2½" x WOF Fabric K strips together end-to-end to create one long strip. From resulting strip cut two 2½" x 58½" inner borders.

Step 8: Sew two 2½" x WOF Fabric K strips together end-to-end to create one long strip.

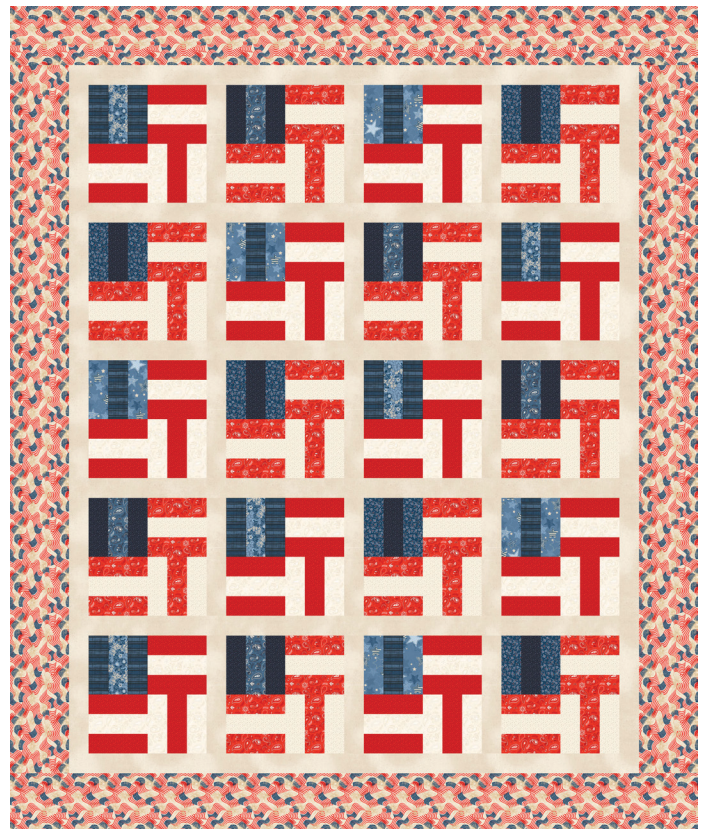
Trim the resulting strip to 2½" x 58" for side inner border. Repeat to make a second side inner border.

Step 9: Sew the side inner borders from Step 8 to the sides of the quilt top. Press. Sew the inner borders from Step 7 to the top and bottom of the quilt top. Press.

Step 10: Sew two 6½" x WOF Fabric L strips together end-to-end to create one long strip. Trim the resulting strip to 6½" x 72½" for side outer borders. Repeat to make a second side outer border.

Step 11: Repeat Step 10, but this time trim the borders to 6½" x 70½" for top and bottom outer borders.

Step 12: Sew the outer borders from Step 10 to the sides of the quilt top. Press. Press the outer borders from Step 11 to the top and bottom of quilt top. Press



Woohoo! Your quilt top is finished. Now, quilt and bind using your preferred method.