

Framework Runner

by Heather Seth for White Owl Textiles

Finished size: 72" x 18"

Difficulty: Confident Beginner



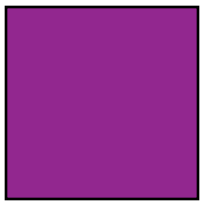
Coffee and Co - Page 4



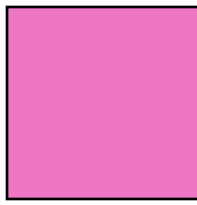
Stripes and Stars - Page 5



Fabric Guide



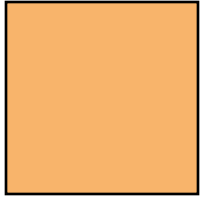
Fabric A
Fat Eighth



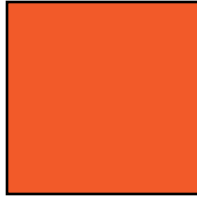
Fabric B
 $\frac{1}{3}$ yard



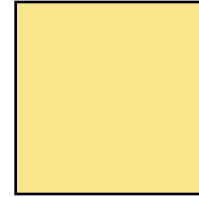
Fabric C
 $\frac{3}{8}$ yard



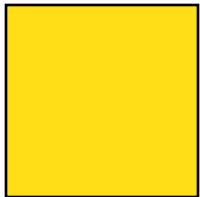
Fabric D
 $\frac{1}{4}$ yard



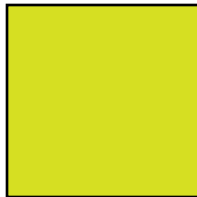
Fabric E
 $\frac{1}{8}$ yard



Fabric F
 $\frac{1}{8}$ yard



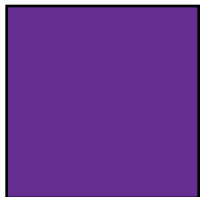
Fabric G
 $\frac{1}{8}$ yard



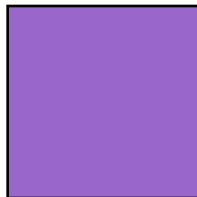
Fabric H
 $\frac{1}{8}$ yard



Fabric I
 $\frac{3}{8}$ yard



Fabric J
 $\frac{1}{8}$ yard



Binding
 $\frac{3}{8}$ yard



Backing
1 $\frac{1}{2}$ yards

Kindly note, our free patterns are not to be sold nor hosted on any other websites. We appreciate your understanding.

All seam allowances are $\frac{1}{4}$ " unless otherwise stated.
Press seams open unless otherwise stated.

WOF = Width of Fabric (selvage to selvage)

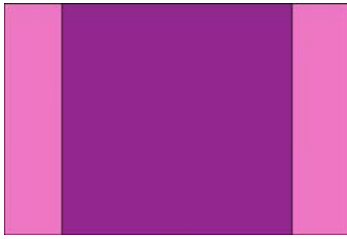
Cutting Instructions

Fabric A	Cut one 6 $\frac{1}{2}$ " x WOF strip - subcut 2 squares 6 $\frac{1}{2}$ " x 6 $\frac{1}{2}$ "
Fabric B	Cut five 2" x WOF strips - subcut 12 strips 2" x 9 $\frac{1}{2}$ " and 8 strips 2" x 6 $\frac{1}{2}$ "
Fabric C	Cut six 2" x WOF strips - subcut 20 squares 2" x 2" for cornerstones · subcut 2 strips 2" x 15 $\frac{1}{2}$ " for side outer borders · sew two 2" x WOF strips together end-to-end to create one long strip trim to 2" x 72 $\frac{1}{2}$ " for top outer border - repeat to make a bottom outer border
Fabric D	Cut four 2" x WOF strips - subcut 8 strips 2" x 9 $\frac{1}{2}$ " and 12 strips 2" x 6 $\frac{1}{2}$ "
Fabric E	Cut one 2" x WOF strip - subcut 20 squares 2" x 2" for cornerstones
Fabric F	Cut one 2" x WOF - subcut 12 strips 2" x 3 $\frac{1}{2}$ "
Fabric G	Cut one 2" x WOF strip - subcut 12 squares 2" x 2" for cornerstones
Fabric H	Cut one 3 $\frac{1}{2}$ " strip - subcut 3 squares 3 $\frac{1}{2}$ " x 3 $\frac{1}{2}$ "
Fabric I	Cut six 2" x WOF strips - subcut 16 strips 2" x 12 $\frac{1}{2}$ " for sashing
Fabric J	Cut one 2" x WOF strip - subcut 12 squares 2" x 2" for sashing cornerstones
Binding	Cut five 2 $\frac{1}{2}$ " x WOF strips

Piecing Instructions

Block A

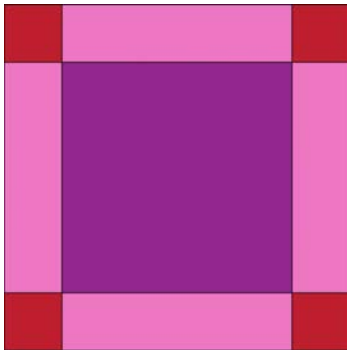
Step 1: Sew a 2" x 6½" Fabric B strip to either side of a 6½" x 6½" Fabric A square. Press.



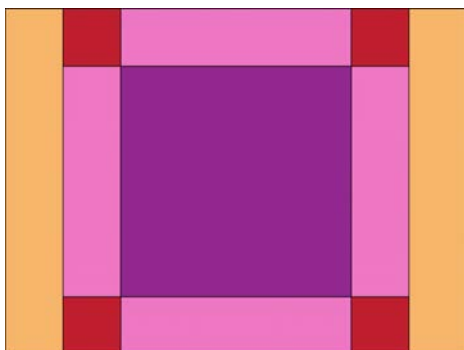
Step 2: Sew a 2" x 2" Fabric C square to both ends of a 2" x 6½" Fabric B strip. Press. Repeat to make a second B/C strip.



Sew the B/C strips to the top and bottom of the block from Step 1. Press



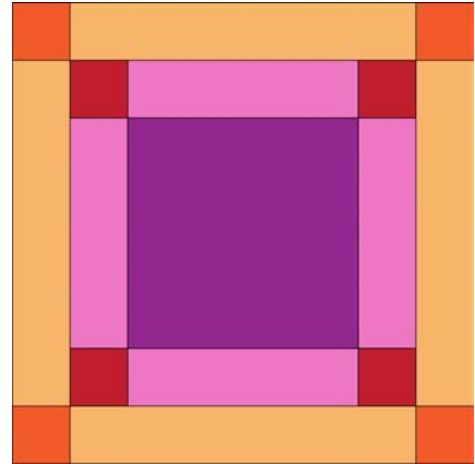
Step 3: Sew a 2" x 9½" Fabric D strip to either side of the block from Step 3. Press.



Step 4: Sew a 2" x 2" Fabric E square to both ends of a 2" x 9½" Fabric D strip. Press. Repeat to make a second D/E strip.



Sew the D/E strips to the top and bottom of the block from Step 3. Press



Repeat Steps 1-4 to make a second Block A.

Block B

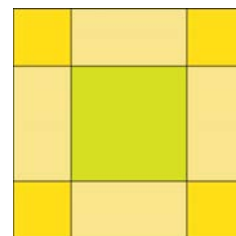
Step 5: Sew a 2" x 3½" Fabric F strip to either side of a 3½" x 3½" Fabric H square. Press



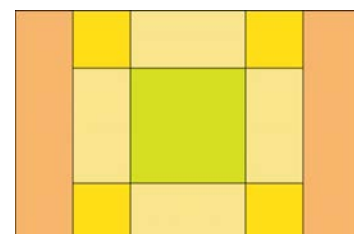
Step 6: Sew a 2" x 2" Fabric G square to both ends of a 2" x 3½" Fabric F strip. Press.



Sew the F/G strips to the top and bottom of the block from Step 5. Press



Step 7: Sew a 2" x 6½" Fabric D strip to either side of the block from Step 6. Press.

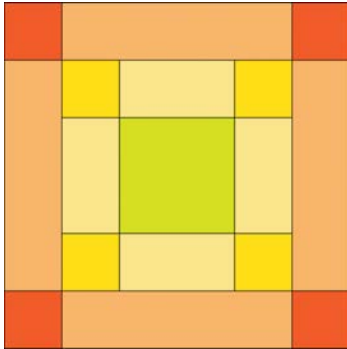


Piecing Instructions

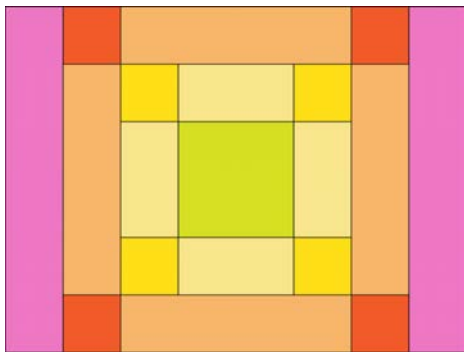
Step 8: Sew a 2" x 2" Fabric E square to both ends of a 2" x 6½" Fabric D strip. Press.



Sew the D/E strips to the top and bottom of the block from Step 7. Press



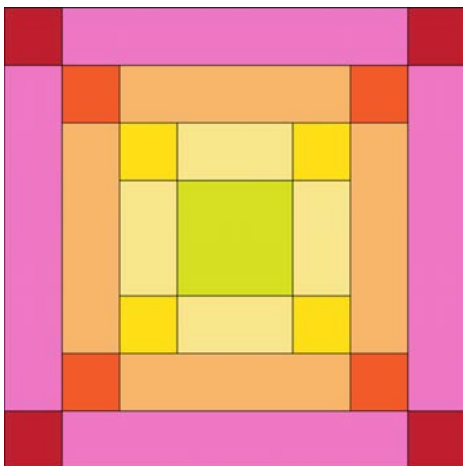
Step 9: Sew a 2" x 9½" Fabric B strip to either side of the block from step 8. Press.



Step 10: Sew a 2" x 2" Fabric C square to both ends of a 2" x 9½" Fabric B strip. Press.

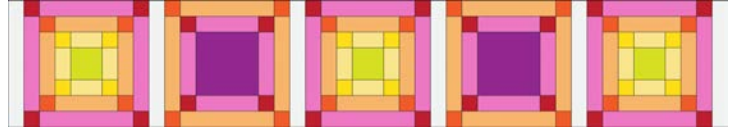


Sew the B/C strips to the top and bottom of the block from Step 9. Press.



Step 11: Sew the blocks together in the following order, placing a 2" x 12½" Fabric I sashing strip between each block and on either end, press:

I - Block B - I - Block A - I - Block B - I - Block A - I - Block B - I

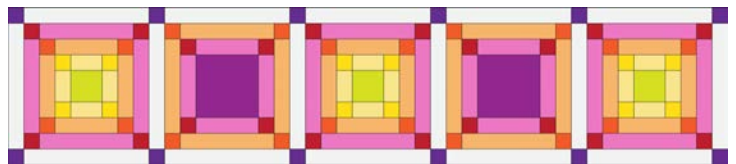


Step 12: Gather five 2" x 12½" Fabric I strips and six 2" x 2" Fabric J squares. Sew the strips together placing a 2" x 2" fabric J square between each strip and on either end. Press

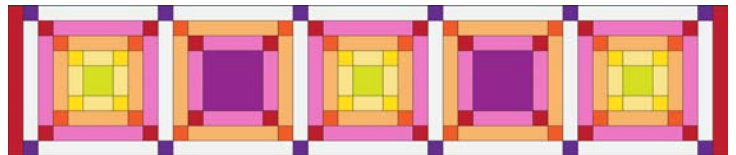


Repeat to make a second sashing row.

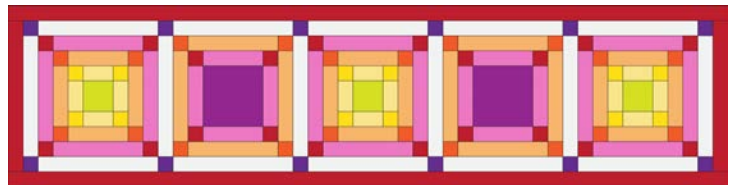
Sew the sashing rows to the top and bottom of the runner from Step 11. Press



Step 13: Sew the 2" x 15½" Fabric C side borders to the sides of the Runner. Press.



Step 14: Sew the 2" x 72½" Fabric C top and bottom borders to the top and bottom of the runner from Step 13.

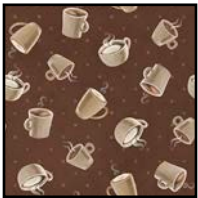


Woohoo! Your runner top is finished. Now, quilt and bind using your preferred method.

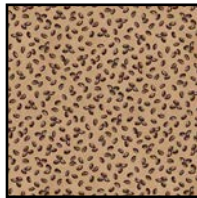
Coffee and Co



Fabric Guide



Fabric A
W135-004-096
Fat Eighth



Fabric B
W135-005-065
 $\frac{1}{3}$ yard



Fabric C
W135-007-090
 $\frac{3}{8}$ yard



Fabric D
W135-008-063
 $\frac{1}{4}$ yard



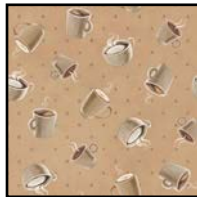
Fabric E
W135-006-090
 $\frac{1}{8}$ yard



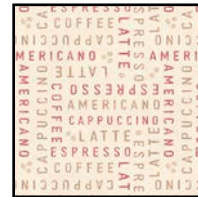
Fabric F
W135-009-020
 $\frac{1}{8}$ yard



Fabric G
W135-007-065
 $\frac{1}{8}$ yard



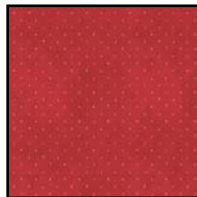
Fabric H
W135-004-065
 $\frac{1}{8}$ yard



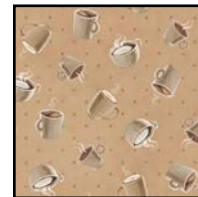
Fabric I
W135-006-030
 $\frac{3}{8}$ yard



Fabric J
W135-009-370
 $\frac{1}{8}$ yard



Binding**
W135-009-370
 $\frac{3}{8}$ yard



Suggested Backing**
W135-004-065
 $1\frac{1}{2}$ yards

*Also used as Fabric J
**Also used as Fabric H

Stripes and Stars



Fabric Guide



Fabric A
W140-004-035
Fat Eighth



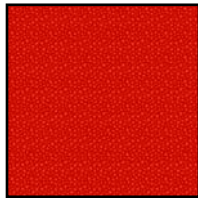
Fabric B
W140-010-575
 $\frac{1}{3}$ yard



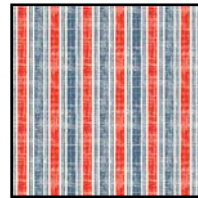
Fabric C
W140-005-555
 $\frac{3}{8}$ yard



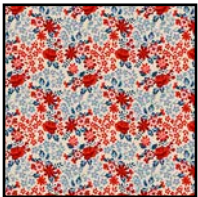
Fabric D
W140-007-303
 $\frac{1}{4}$ yard



Fabric E
W140-009-360
 $\frac{1}{8}$ yard



Fabric F
W140-010-035
 $\frac{1}{8}$ yard



Fabric G
W140-006-035
 $\frac{1}{8}$ yard



Fabric H
W140-005-035
 $\frac{1}{8}$ yard



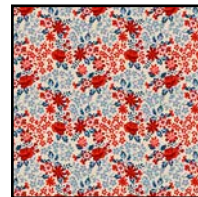
Fabric I
W140-007-025
 $\frac{3}{8}$ yard



Fabric J
W140-009-590
 $\frac{1}{8}$ yard



Binding*
W140-009-590
 $\frac{3}{8}$ yard



Suggested Backing**
W140-006-035
 $1\frac{1}{2}$ yards

*Also used as Fabric J
**Also used as Fabric G