

# Framework Wall Hanging

by Heather Seth for White Owl Textiles  
Summer 2025

Difficulty: Beginner

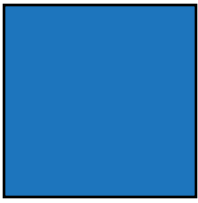


Flight of Fancy (39" x 58½") - Page 3

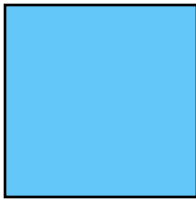


Stripes and Stars (39" x 67") - Page 4

## Fabric Guide



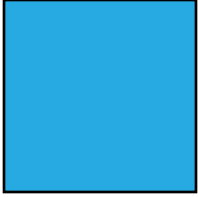
**Fabric A (Panel)**  
1 yard



**Fabric B (Stripe)**  
1  $\frac{1}{8}$  yards



**Fabric C**  
 $\frac{5}{8}$  yard



**Binding**  
 $\frac{1}{2}$  yard



**Backing**  
2  $\frac{5}{8}$  yards

*Kindly note, our free patterns are not to be sold nor hosted on any other websites. We appreciate your understanding.*

All seam allowances are  $\frac{1}{4}$ " unless otherwise stated.  
Press seams open unless otherwise stated.

WOF = Width of Fabric (selvage to selvage)  
LOF = Length of Fabric

## Cutting Instructions

Note: refer to the colorstory pages at the end for each sample projects cutting measurements.

Fabric A	See colorstories on pages 3-4 for panel cut size
Fabric B	See colorstories on pages 3-4 for stripe cut size
Fabric C	Cut 8 strips 2 $\frac{1}{2}$ " x WOF (7 strips may only be needed depending on the size of the stripe fabric cut). <ul style="list-style-type: none"> <li>• Top and bottom panel borders               <ul style="list-style-type: none"> <li>• Trim two strips down to 2 <math>\frac{1}{2}</math>" x 35 <math>\frac{1}{2}</math>"</li> </ul> </li> <li>• Top and bottom outer borders               <ul style="list-style-type: none"> <li>• Trim two strips down to 2 <math>\frac{1}{2}</math>" x 39 <math>\frac{1}{2}</math>"</li> </ul> </li> <li>• Side outer borders               <ul style="list-style-type: none"> <li>• See colorstories on pages 3-4 for side outer borders cut size</li> </ul> </li> </ul>
Binding	Cut 6 strips 2 $\frac{1}{2}$ " x WOF

## Assembly Instructions

**Step 1:** Sew Fabric C top and bottom panel borders to the top and bottom of the panel. Press towards Fabric C.

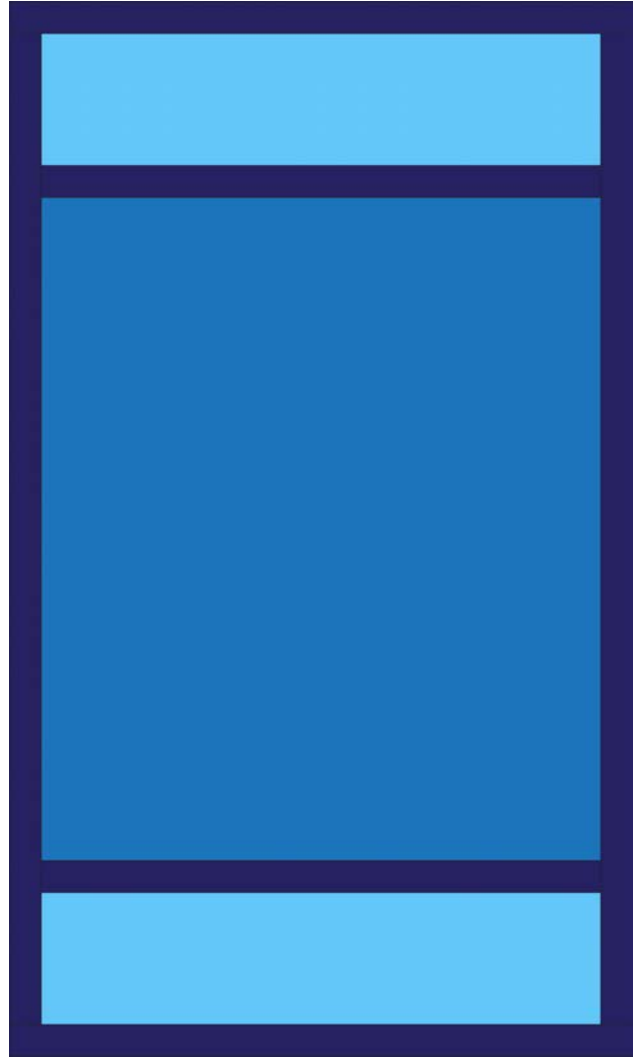


**Step 2:** Sew Fabric B strips to the top and bottom of panel from step 2. Press towards Fabric C.



**Step 3:** Sew the Fabric C side outer borders to the sides of the quilt top from Step 2. Press towards Fabric C outer borders.

**Step 4:** Sew the Fabric C top and bottom outer borders to the top and bottom of the quilt top from Step 3. Press towards Fabric C outer borders.



Woohoo! Your quilt top is now finished. Now, quilt and bind it using your preferred method.



# Flight of Fancy



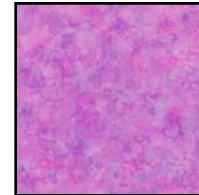
## Fabric Guide



**Fabric A (Panel)**  
W130-002-800  
1 yard



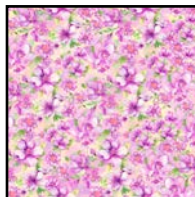
**Fabric B (Stripe)**  
W130-003-800  
1 1/8 yards



**Fabric C**  
W130-012-140  
5/8 yard



**Binding**  
W130-010-185  
1/2 yard



**Suggested Backing**  
W130-007-406  
2 5/8 yards

*Kindly note, our free patterns are not to be sold nor hosted on any other websites. We appreciate your understanding.*

All seam allowances are 1/4" unless otherwise stated.  
Press seams open unless otherwise stated.

WOF = Width of Fabric (selvage to selvage)  
LOF = Length of Fabric

## Cutting Instructions

Fabric A	Fussy cut panel to 35 1/2" x 42"
Fabric B	Fussy cut two stripe sections your 5" x LOF - Trim each strip to 35 1/2" wide.
Fabric C	Side outer borders <ul style="list-style-type: none"> <li>Sew three strips together end-to-end to create one long strip. From the resulting strip cut 2 strips 2 1/2" x 55"</li> </ul>

# Stripes and Stars



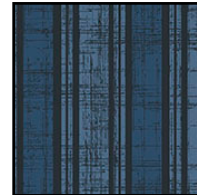
## Fabric Guide



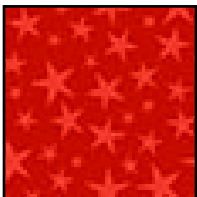
**Fabric A (Panel)**  
W140-001-817  
1 yard



**Fabric B (Stripe)**  
W140-002-817  
1 1/8 yards



**Fabric C**  
W140-010-575  
5/8 yard



**Binding**  
W140-009-360  
1/2 yard



**Suggested Backing**  
W140-004-035  
2 5/8 yards

*Kindly note, our free patterns are not to be sold nor hosted on any other websites. We appreciate your understanding.*

All seam allowances are 1/4" unless otherwise stated.  
Press seams open unless otherwise stated.

WOF = Width of Fabric (selvage to selvage)  
LOF = Length of Fabric

## Cutting Instructions

Fabric A	Fussy cut panel to 35 1/2" x 42"
Fabric B	Fussy cut two stripe sections your 9 1/4" x LOF - Trim each strip to 35 1/2" wide.
Fabric C	Side outer borders <ul style="list-style-type: none"> <li>Sew four strips together end-to-end to create one long strip. From the resulting strip cut 2 strips 2 1/2" x 63 1/2"</li> </ul>