

# Patchwork Placemats

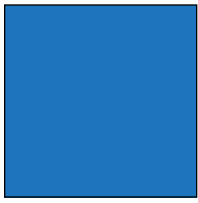
by Heather Seth & Elise Lea for White Owl Textiles

Finished size: 20" x 14"

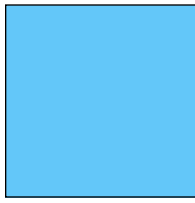
Difficulty: Beginner



## Fabric Guide



**Fabric A (Panel)**  
 $\frac{2}{3}$  yard



**Fabric B**  
 $\frac{3}{8}$  yard



**Fabric C**  
 $\frac{3}{8}$  yard



**Binding**  
 $\frac{5}{8}$  yard



**Suggested Backing**  
1 yard

*Kindly note, our free patterns are not to be sold nor hosted on any other websites. We appreciate your understanding.*

All seam allowances are  $\frac{1}{4}$ " unless otherwise stated.

Press seams open unless otherwise stated.

WOF = Width of Fabric (selvage to selvage)

## Cutting Instructions

Fabric A	Fussy cut four $10\frac{1}{2}$ " x $16\frac{1}{2}$ " rectangles for placemat centers
Fabric B	Cut 8 strips $1\frac{1}{2}$ " x WOF
Fabric C	Cut 8 strips $1\frac{1}{2}$ " x WOF
Binding	Cut 8 strips $2\frac{1}{2}$ " x WOF

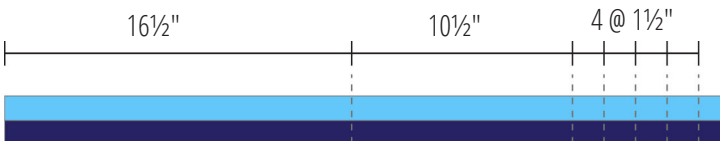
## Assembly Instructions

**Step 1:** Sew one Fabric B strip and one Fabric C strip together along the long edge to create one BC Strip set. Press. Repeat for all Fabric B and Fabric C strips for a total of 8 BC strip sets.

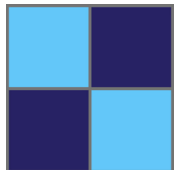


**Step 2:** Cut each BC strip set into the following pieces:

- one  $2\frac{1}{2}$ " x  $16\frac{1}{2}$ " top/bottom border
- one  $2\frac{1}{2}$ " x  $10\frac{1}{2}$ " side strips
- four  $2\frac{1}{2}$ " x  $1\frac{1}{2}$ " strips for four-patches



**Step 3:** Gather two  $2\frac{1}{2}$ " x  $1\frac{1}{2}$ " strips sew them together as shown to create a four-patch unit. Press. Repeat with remaining  $2\frac{1}{2}$ " x  $1\frac{1}{2}$ " strips to create a total of 16 four-patch units.



**Step 4:** Gather one  $2\frac{1}{2}$ " x  $10\frac{1}{2}$ " side strip and two four-patches from Step 3. Create the side borders by sewing the four-patches to the ends of the side strip as shown, noting the placement of the colors. Press. Repeat with remaining side strips and four-patch units to create 8 side borders.



## Assembly Instructions

**Step 5:** Gather two 2½" x 16½" top/bottom borders and one 10½" x 16½" placemat center rectangle. Sew one top/bottom border to the top of the placemat, noting orientation of the borders. Press. Again noting the orientation, sew the remaining border to the bottom of the placemat. Press. Repeat with all placemat centers and all top/bottom borders, using the image to the right as a guide for strip orientation.



**Step 6:** Gather two side borders from Step 4. Sew them to the sides of the placemat from Step 5 as shown, noting the orientation of the strips. Press. Repeat with remaining placemats, using the image to the right as a guide.



Woohoo! Your placemat tops are now finished. Now, quilt and bind it using your preferred method.





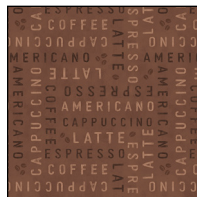
# Coffee and Co



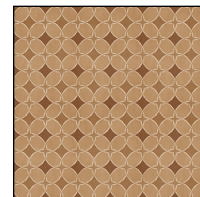
## Fabric Guide



**Fabric A (Panel)**  
W135-001-300  
 $\frac{2}{3}$  yard



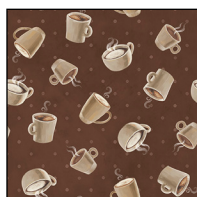
**Fabric B**  
W135-006-090  
 $\frac{3}{8}$  yard



**Fabric C**  
W135-007-065  
 $\frac{3}{8}$  yard



**Binding**  
W135-008-098  
 $\frac{5}{8}$  yard



**Suggested Backing**  
W135-004-096  
1 yard

Kindly note, our free patterns are not to be sold nor hosted on any other websites. We appreciate your understanding.