

Song of Nature

by Elise Lea for White Owl Textiles

Featuring

Finished size: 59" x 71"

Nature's Serenade



Featuring

Take me to the Sea



Page 2

Fabric Guide



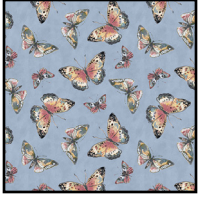
Fabric A
W105-019-025
 $\frac{2}{3}$ yard



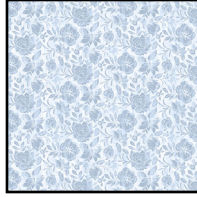
Fabric B
W105-020-065
1½ yards



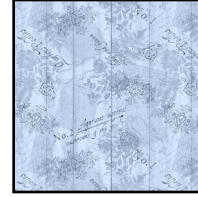
Fabric C
W105-022-032
 $\frac{1}{3}$ yard



Fabric D
W105-024-515
 $\frac{1}{8}$ yard



Fabric E
W105-026-510
 $\frac{1}{8}$ yard



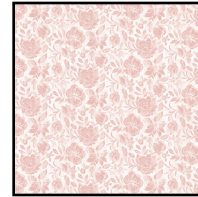
Fabric F
W105-027-510
 $\frac{1}{8}$ yard



Fabric G
W105-025-102
 $\frac{1}{8}$ yard



Fabric H
W105-023-146
 $\frac{1}{8}$ yard



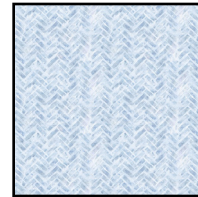
Fabric I
W105-026-111
 $\frac{1}{8}$ yard



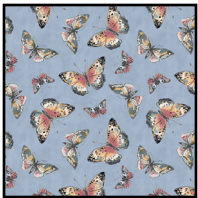
Fabric J
W105-023-546
 $\frac{3}{4}$ yard



Fabric K
EC-700
1½ yards



Binding
W105-028-510
 $\frac{5}{8}$ yard



Suggested Backing*
W105-024-515
3¾ yards

*Backing is also used as Fabric D

Kindly note, our free patterns are not to be sold nor hosted on any other websites. We appreciate your understanding.

All seam allowances are $\frac{1}{4}$ " unless otherwise stated.
Press seams open unless otherwise stated.
WOF = Width of Fabric (selvage to selvage)

LOF = Length of Fabric
HST = Half Square Triangle
RST = Right Sides Together

Cutting Instructions

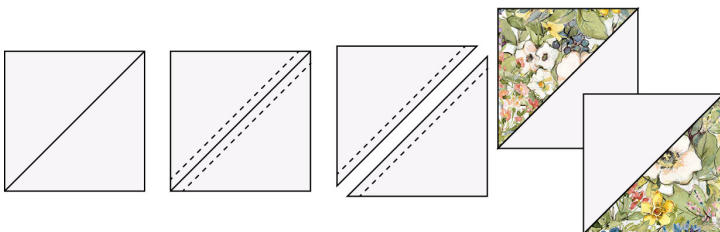
Fabric A	Fussy cut six 11½" squares - centering the motifs within each square
Fabric B	Fussy cut 4 strips 6½" x LOF centering the motif within the strip • Trim each strip down to 6½" x 51½"
Fabric C	Cut 1 strip 6" x WOF - subcut three 6" x 6" squares Cut 2 strips 3¾ x WOF - subcut twelve 3¾ x 3¾ squares for HSTs
Fabrics D-I	Cut 1 strip 3½" x WOF - subcut six 3½" x 3½" squares

Cutting Instructions Continued

Fabric J	Cut 7 strips $3\frac{1}{2}"$ x WOF <ul style="list-style-type: none"> Sew 3 strips together end-to-end. Cut 2 strips $3\frac{1}{2}"$ x $59\frac{1}{2}"$ for top & bottom outer borders Sew 2 strips together end-to-end. Trim resulting strip to $3\frac{1}{2}"$ x $65\frac{1}{2}"$ for side outer border. Repeat to make another side outer border.
Fabric K	Cut 1 strip $3\frac{3}{4}"$ x WOF - subcut twelve $3\frac{3}{4}"$ x $3\frac{3}{4}"$ squares Cut 2 strips $3\frac{3}{4}"$ x WOF - subcut twelve $3\frac{3}{4}"$ x $3\frac{3}{4}"$ squares for HSTs Cut 23 strips $1\frac{1}{2}"$ x WOF <ul style="list-style-type: none"> From 1 strip cut - 28 strips $1\frac{1}{2}"$ x $3\frac{1}{2}"$ From 6 strips cut - 18 strips $1\frac{1}{2}"$ x $11\frac{1}{2}"$ for vertical sashing Sew 3 strips together end-to-end. Cut 2 strips $1\frac{1}{2}"$ x $51\frac{1}{2}"$ for horizontal sashing - repeat 2 more times to create 6 horizontal sashing strips Sew 3 strips together end-to-end. Cut 2 strips $1\frac{1}{2}"$ x $53\frac{1}{2}"$ for top/bottom inner border Sew 2 strips together end-to-end. Trim resulting strip to $1\frac{1}{2}"$ x $63\frac{1}{2}"$ for side inner border - repeat to make another side inner border
Binding	Cut 7 strips $2\frac{1}{2}"$ x WOF

Piecing Instructions

Step 1: Draw a line diagonally across the back of a $3\frac{3}{4}"$ x $3\frac{3}{4}"$ Fabric K square. Lay RST on top of a $3\frac{3}{4}"$ x $3\frac{3}{4}"$ Fabric C square. Sew a scant $\frac{1}{4}"$ away from either side of the line. Cut apart on the line to make two HSTs. Open and press. Trim to $3\frac{1}{4}"$ x $3\frac{1}{4}"$. Repeat to make a total of 24 HSTs.

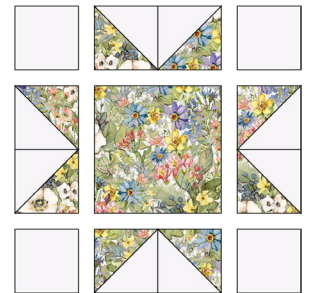


Step 2: Sew 2 of the HSTs from Step 1 together as shown to make a flying geese block. Press. Repeat to make a total of 12 flying geese blocks



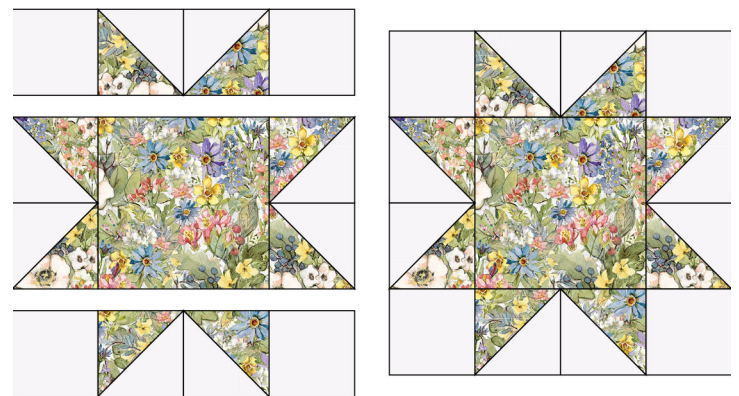
Step 3: Gather the following pieces:

- four flying geese from Step 2
- one 6" x 6" Fabric C square
- four $3\frac{1}{4}"$ x $3\frac{1}{4}"$ Fabric K squares



Lay the pieces out as shown.

Sew together into rows. Press. Sew the rows together to make a star block. Press.



Repeat to make a total of 3 star blocks.

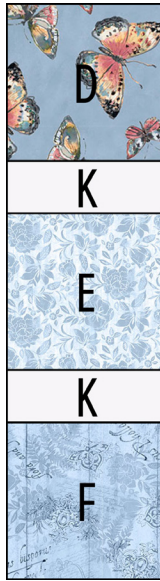
Piecing Instructions Continued

Step 4: Gather the following pieces:

- one 3½" x 3½" Fabric D square
- one 3½" x 3½" Fabric E square
- one 3½" x 3½" Fabric F square
- two 1½ x 3½" Fabric K strips

Sew the pieces together following the diagram to the right. Press.

Repeat to make 6 A columns.



Step 5: Gather the following pieces:

- one 3½" x 3½" Fabric G square
- one 3½" x 3½" Fabric H square
- one 3½" x 3½" Fabric I square
- two 1½ x 3½" Fabric K strips

Sew the pieces together following the diagram to the right. Press.

Note: On the Take Me to the Sea version, Fabric 1 should have 3 blocks with the motif right side up and 3 blocks with the fabric motif upside down.

Repeat to make 6 B columns.



Step 6: Sew a 1½" x 11½" Fabric K vertical sashing strip between an A column and a B column together as shown (noting orientation of the columns). Press.

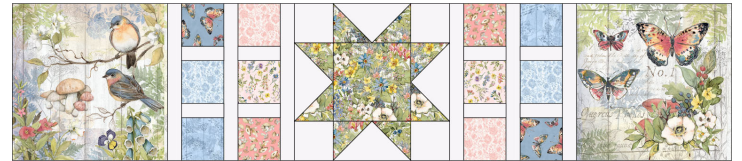
Repeat to make 6
A/B blocks.



Step 7: To make the block Row 1, sew together the following pieces in the order listed:

- Fabric A - 11½" x 11½" square
- Fabric K - 1½" x 11½" sashing strips
- A/B block from Step 6
- Fabric K - 1½" x 11½" sashing strips
- Star block from Step 3
- Fabric K - 1½" x 11½" sashing strips
- A/B block from Step 6
- Fabric K - 1½" x 11½" sashing strips
- Fabric A - 11½" x 11½" square

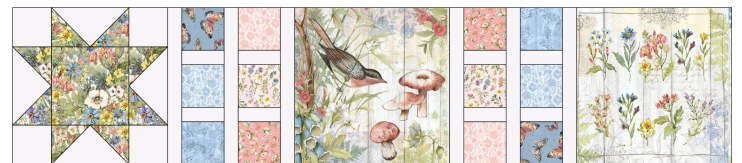
Make sure to pay attention to placement and orientation of blocks. Press.



Step 8: Repeat Step 7 following the diagram below to make Row 2. *Make sure to pay attention to where the Fabric A squares and Star blocks are located as they are different in each row.* Press.



Step 9: Repeat again for Row 3. Press.



Step 10: Sew a 1½" x 51½" Fabric K horizontal sashing strip to the top and bottom of Rows 1, 2 and 3. Press.

Piecing Instructions Continued

Step 11: Gather Rows 1, 2 and 3, and the four 6½" x 51½" Fabric B strips. Sew them together in the following order and press:

- Fabric B - 6½" x 51½" strip
- Row 1
- Fabric B - 6½" x 51½" strip
- Row 2
- Fabric B - 6½" x 51½" strip
- Row 3
- Fabric B - 6½" x 51½" strip



Step 12: Sew the 1½" x 63½" Fabric K side inner borders to the sides of the quilt top. Press.

Step 13: Sew the 1½" x 53½" Fabric K top and bottom inner borders to the sides of the quilt top. Press.

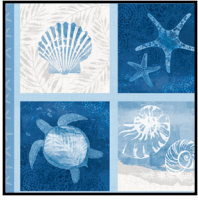
Step 14: Sew the 3½" x 65½" Fabric J side outer borders to the sides of the quilt top. Press.

Step 15: Sew the 3½" x 59½" Fabric K top and bottom outer borders to the sides of the quilt top. Press.



Woohoo! Your quilt top is finished. Now, quilt and bind using your preferred method.

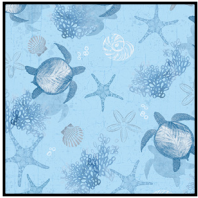
Take Me to the Sea



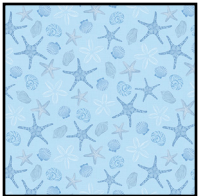
Fabric A
W145-001-860
 $\frac{2}{3}$ yard



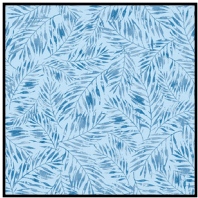
Fabric B
W145-002-860
1½ yards



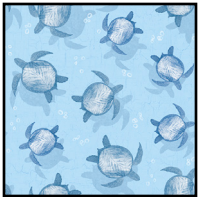
Fabric C
W145-003-517
 $\frac{1}{3}$ yard



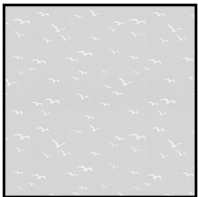
Fabric D
W145-005-517
 $\frac{1}{8}$ yard



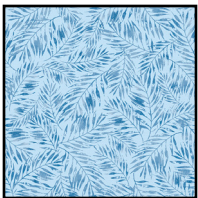
Fabric E
W145-008-517
 $\frac{1}{8}$ yard



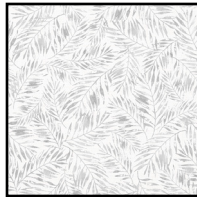
Fabric F
W145-004-517
 $\frac{1}{8}$ yard



Fabric I
W145-007-705
 $\frac{1}{8}$ yard



Binding
W145-008-517
 $\frac{5}{8}$ yard



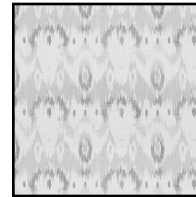
Fabric G
W145-008-705
 $\frac{1}{8}$ yard



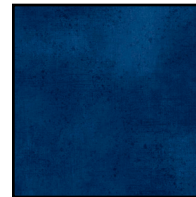
Fabric J
W145-006-570
 $\frac{3}{4}$ yard



Suggested Backing
W145-003-570
3¾ yards



Fabric H
W145-010-715
 $\frac{1}{8}$ yard



Fabric K
W130-001-575
1¼ yards



*Binding is also used as Fabric E

Kindly note, our free patterns are not to be sold nor hosted on any other websites. We appreciate your understanding.