

# Square Up

by Elise Lea for White Owl Textiles

*Featuring*



Finished size: 69" x 79"



## Fabric Guide



**Main**  
½ yard



**Lining**  
½ yard



**Cuff**  
⅓ yard

**Additional Supplies:**  
½ yard Fusible Fleece

*Kindly note, our free patterns are not to be sold nor hosted on any other websites. We appreciate your understanding.*

All seam allowances are ¼" unless otherwise stated.  
Press seams open unless otherwise stated.

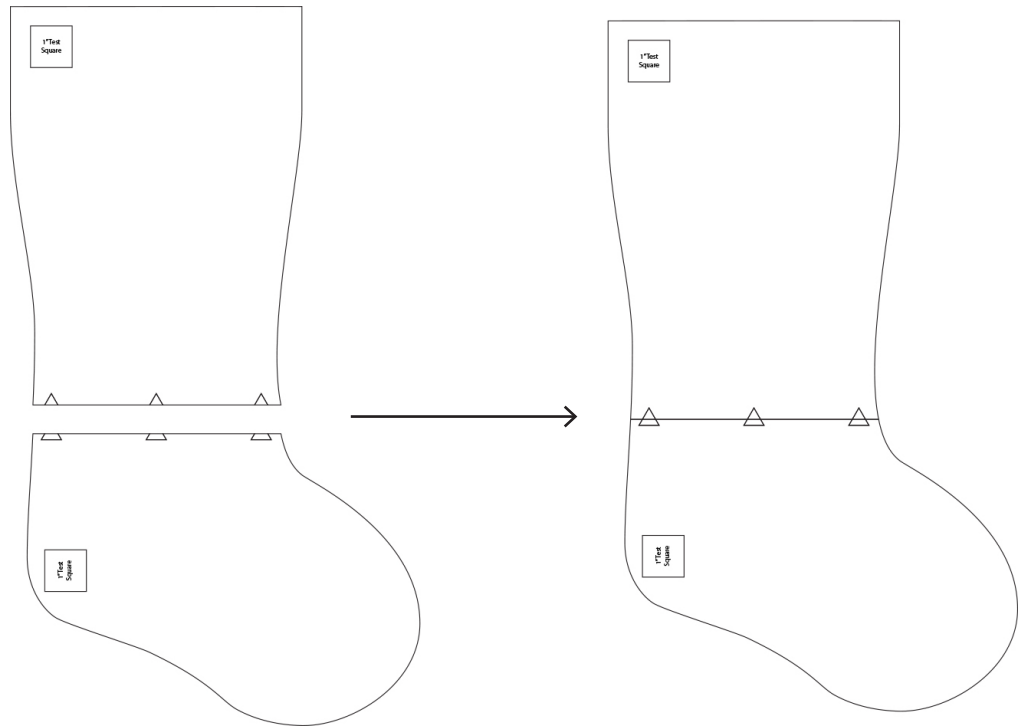
WOF = Width of Fabric (selvage to selvage)  
RST = Right Sides Together  
WST = Wrong Sides Together

## Template Instructions

Print pages X-X at 100%. *Do not fit to page or scale to fit.*

Measure the 1" test square to make sure it measures 1".

Cut the templates out along the lines and tape them together, using the triangles as guide.



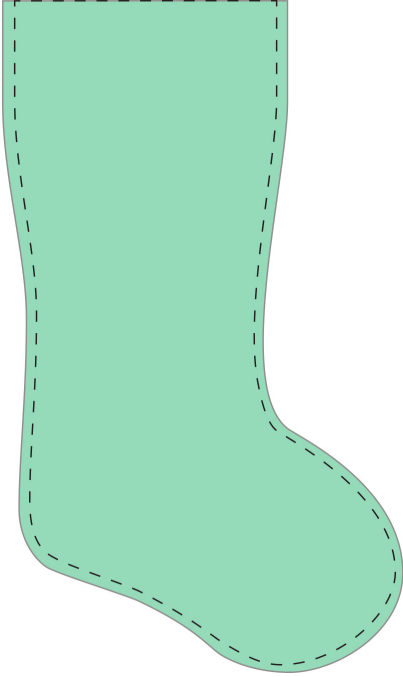
## Cutting Instructions

Main	Cut 2 stockings out using the template provided. Cut one with the template face up and one with the template face down.
Lining	Cut 2 stockings out using the template provided. Cut one with the template face up and one with the template face down.
Cuff	Cut one strip 9½" x WOF - Subcut one strip 9½" x 14½" and one strip 2" x 6" for hanging loop.
Fusible Fleece	Cut 2 stockings out using the template provided. Cut one with the template face up and one with the template face down.

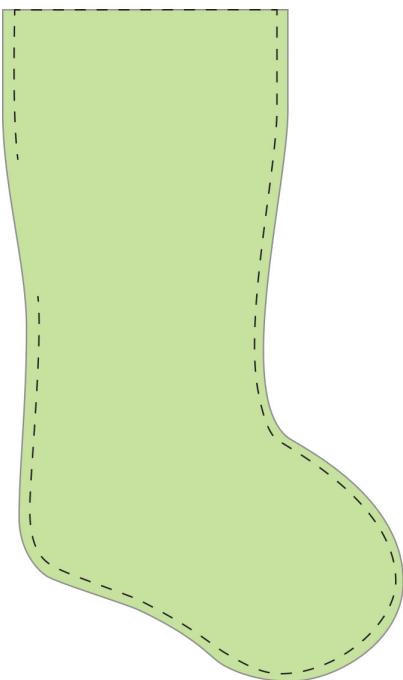
## Piecing Instructions

**Step 1:** Fuse the fusible fleece to the wrong side of the Main fabric stocking pieces.

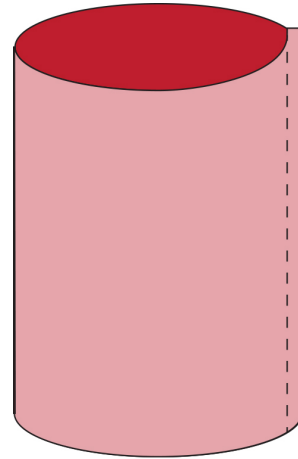
**Step 2:** Lay the main stocking pieces RST and stitch around the stocking leaving the top edge unsewn. Turn right side out and press.



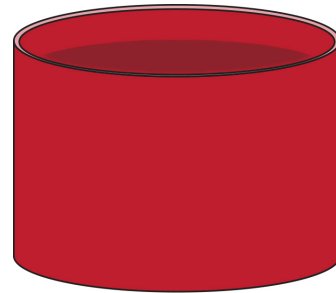
**Step 3:** Lay the main stocking pieces RST and stitch around the stocking leaving a 4" gap in one side and the top edge unsewn.



**Step 4:** Fold the cuff in half RST matching up short edges. Stitch along the short edge. Press.



**Step 5:** Fold the sewn cuff in half WST matching raw edges and lining up the seam line. Press.



**Step 6:** To make the hanging loop, fold the 2" x 6" hanging loop in half the long way wrong sides together and press.



Open the hanging loop up and fold the edges of the loop in to the middle creased line and press. Fold the strap in half again along the original



fold line. Press. The loop should be about 1/2" wide. Topstitch along both edges of the loop about an 1/8" away from the edge.



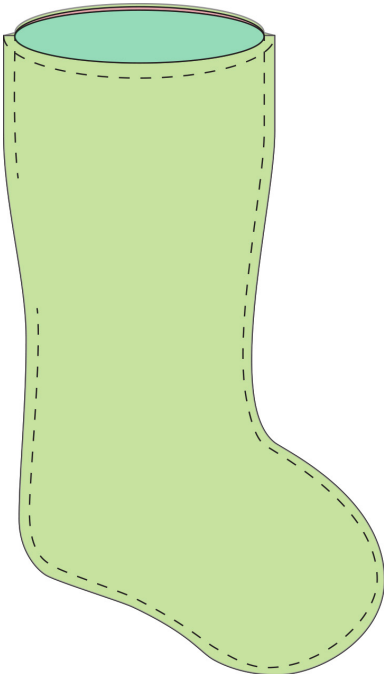
## Piecing Instructions

**Step 7:** Pull cuff over the top of the stocking main. Align cuff seam with back seam and align raw edges of cuff with raw edges of stocking. Pin in place. Fold hanging loop in half and align raw edges. Place it in the back of the stocking, centering it over the back seam of the cuff aligning raw edges with raw edges of stocking. Pin in place.

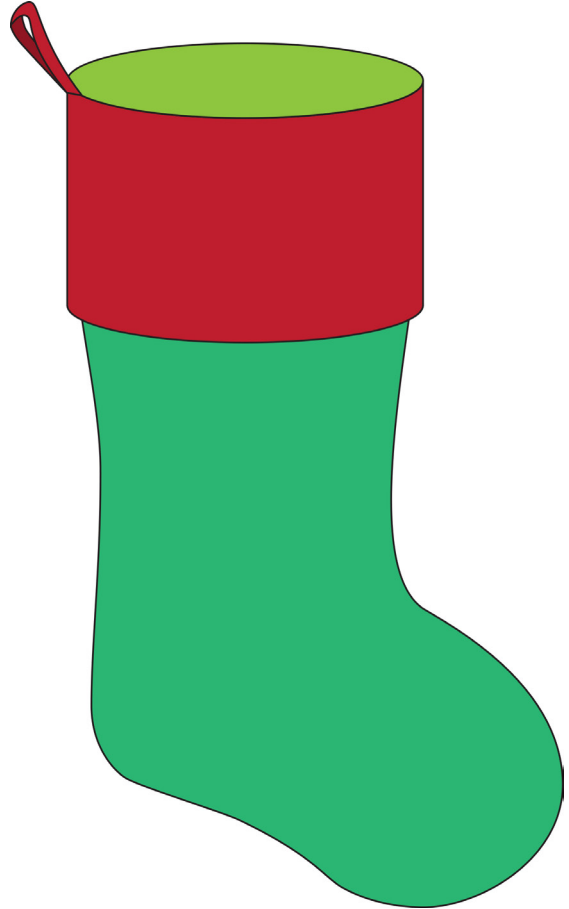


**Step 8:** Take the lining piece and tuck the stocking from Step 7 into the lining RST, lining up back seam and raw edges. Pin everything together making sure to keep all edges lined up.

Sew around the top of the stocking making sure to check that all layers are aligned as you sew.

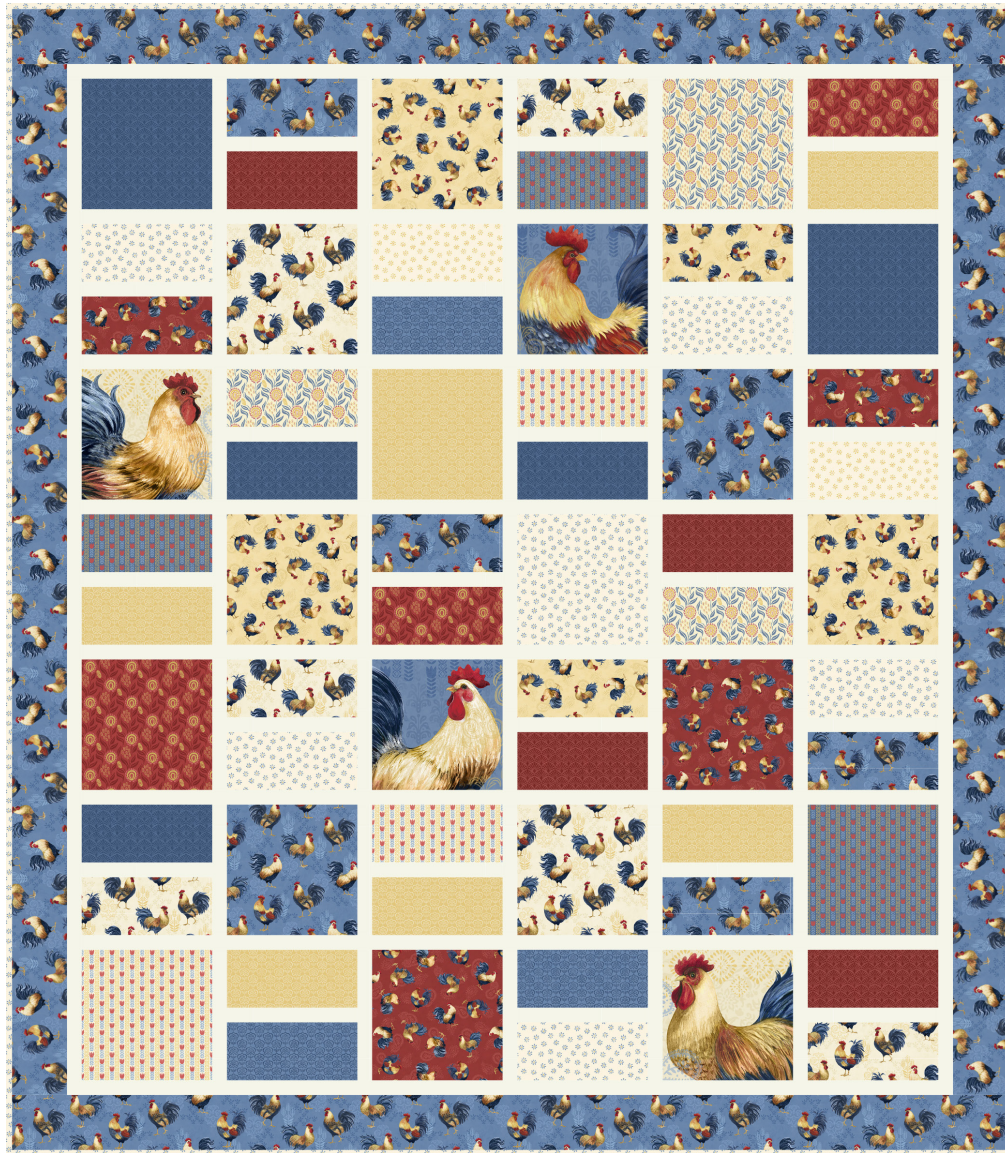


**Step 9:** Turn the stocking right side out through the hole left in the lining. Whip stitch the hole closed and push the lining down into the main stocking and press everything flat. Top stitch around the top of the stocking.



**Woohoo!** Your stocking is now finished. Now, quilt and bind it using your preferred method.

# Rooster Reverie



## Fabric Guide



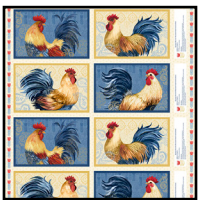
**Fabric A**  
1 Stack  
Rooster Reverie-10



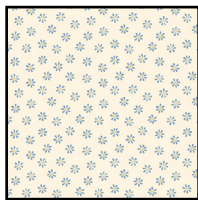
**Fabric B**  
EC-020 Snow  
1 $\frac{3}{8}$  yards



**Fabric C**  
W105-042-552  
1 $\frac{1}{8}$  yards



**Fabric D**  
W105-041-523  
 $\frac{2}{3}$  yard



**Binding**  
W105-046-052  
 $\frac{5}{8}$  yards



**Suggested Backing**  
W105-043-252  
4 $\frac{7}{8}$  yards

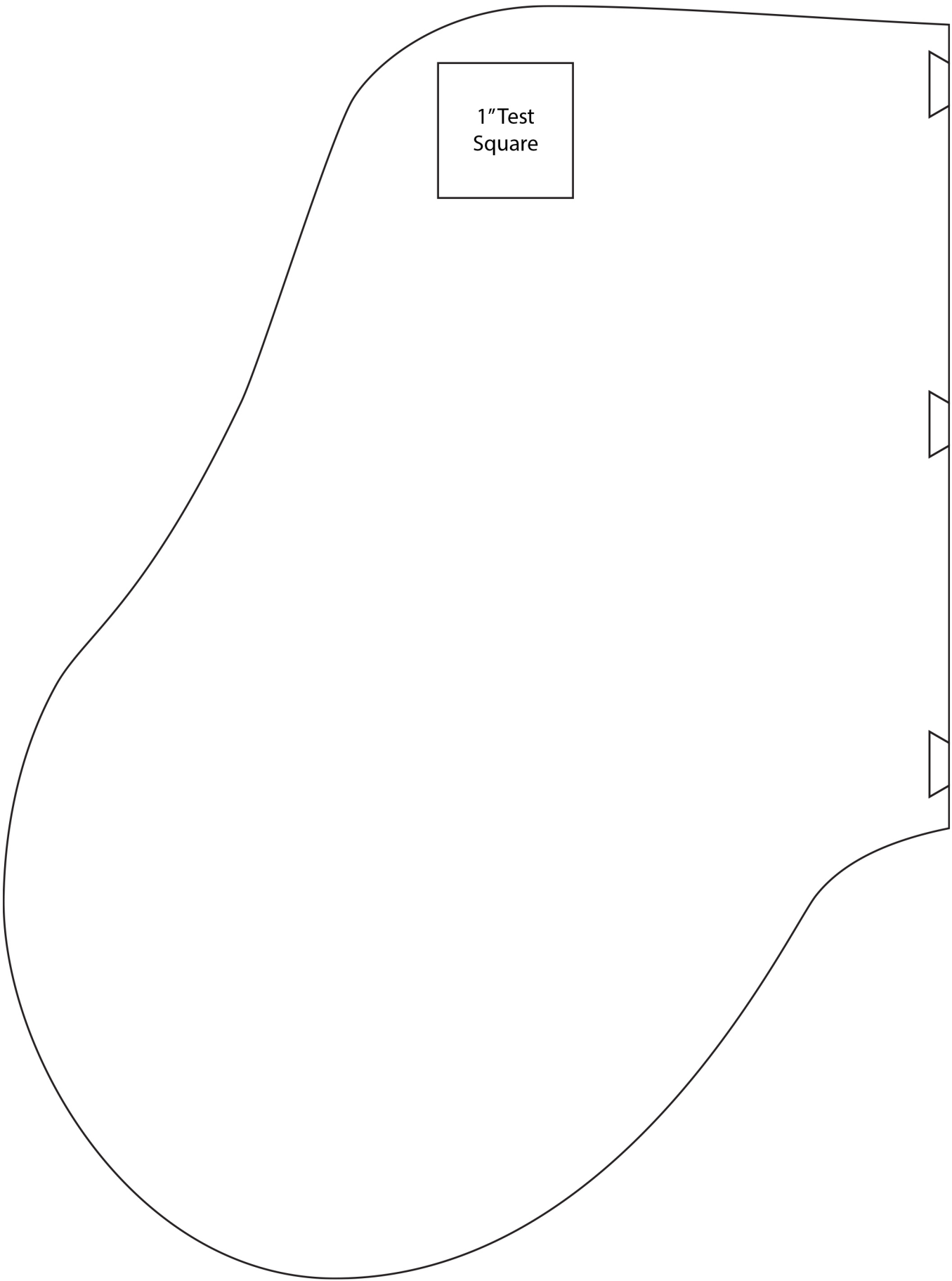
Kindly note, our free patterns are not to be sold nor hosted on any other websites. We appreciate your understanding.

All seam allowances are  $\frac{1}{4}$ " unless otherwise stated.  
Press seams open unless otherwise stated.

WOF = Width of Fabric (selvage to selvage)

1" Test  
Square





1" Test  
Square