

Cornerstone Runner

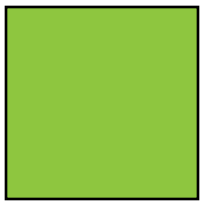
by Heather Seth for White Owl Textiles

Finished size: 16½" x 64½"

ROOSTER REVERIE



Fabric Guide



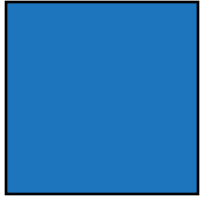
Fabric A
2/3 yard



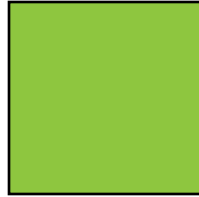
Fabric B
3/8 yard



Fabric C
1/8 yard



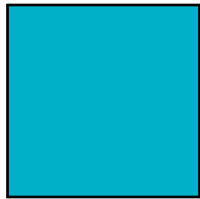
Fabric D
1/4 yard



Fabric E
Fat Quarter



Binding
3/8 yard



Backing
1 1/4 yards

Kindly note, our free patterns are not to be sold nor hosted on any other websites. We appreciate your understanding.

All seam allowances are 1/4" unless otherwise stated.
Press seams open unless otherwise stated.

WOF = Width of Fabric (selvage to selvage)

Cutting Instructions

Fabric A	Fussy cut four 11" x 11" squares
Fabric B	Cut six 2" x WOF strips - subcut sixteen 2" x 11" strips for sashing
Fabric C	Cut one 2" x WOF strips - subcut twelve 2" x 2" squares for cornerstones
Fabric D	Cut four strips 2" x WOF - sew two strips together end-to-end, from resulting strip cut one 2" x 65" strip and one 2" x 14" strip for outer border Repeat with remaining the 2" x WOF strips.
Fabric E	Cut one 11" x 11" square
Binding	Cut five strips 2 1/2" x WOF

Piecing Instructions

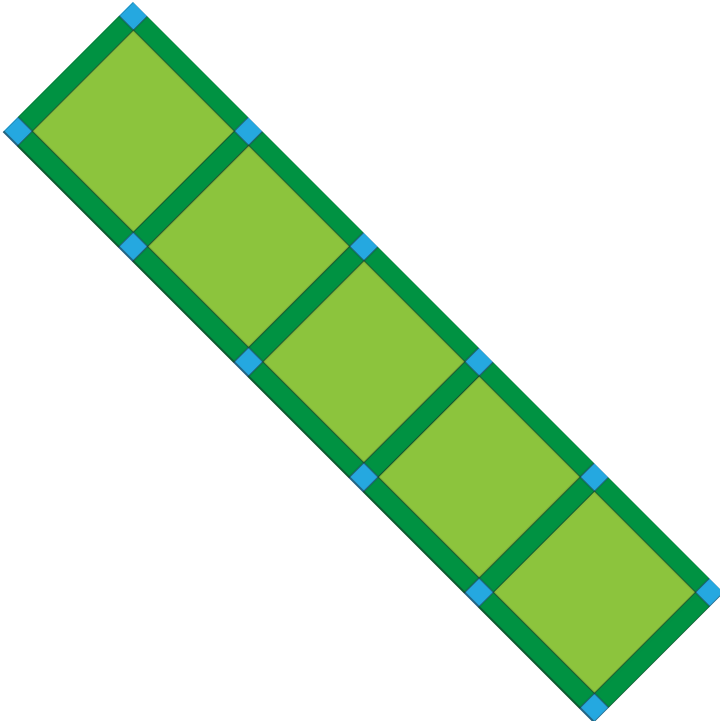
Step 1: Sew a 2" x 2" Fabric C square to both ends of a 2" x 11" Fabric B strip. Press. Repeat to make 6 vertical sashing strips.



Step 2: Sew a 2" x 11" Fabric B strip to the top and bottom of an 11" x 11" Fabric A square. Press. Repeat for all four Fabric A squares and one Fabric E square.

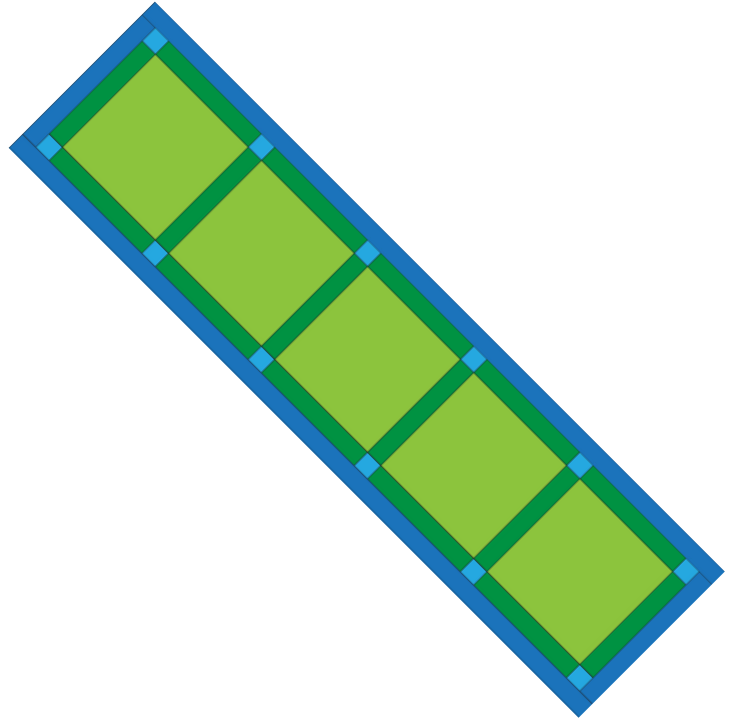


Step 3: Sew all five blocks from Step 2 together, placing a vertical sashing strip from Step one



between each block and on both ends. Press.

Step 4: Sew a 2" x 14" Fabric D strip to both ends of the runner. Press. Sew a 2" x 65" Fabric D strip to the top and bottom of the runner.



Press.

Woohoo! Your runner top is finished. Now, quilt and bind using your preferred method.

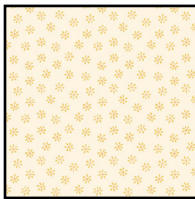
Rooster Reverie



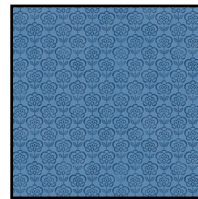
Fabric Guide



Fabric A
W105-041-523
 $\frac{2}{3}$ yard



Fabric B
W105-046-022
 $\frac{3}{8}$ yard



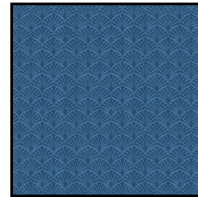
Fabric C
W105-047-555
 $\frac{1}{8}$ yard



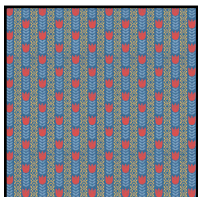
Fabric D
W105-043-252
 $\frac{1}{4}$ yard



Fabric E
W105-042-552
Fat Quarter



Binding
W105-048-555
 $\frac{3}{8}$ yard



Suggested Backing
W105-045-032
 $1\frac{1}{4}$ yards

Kindly note, our free patterns are not to be sold nor hosted on any other websites. We appreciate your understanding.

All seam allowances are $\frac{1}{4}$ " unless otherwise stated.
Press seams open unless otherwise stated.

WOF = Width of Fabric (selvage to selvage)